

SPONSORS

The following donors have sponsored Cal State LA student memberships in Phi Alpha Theta, Eta Xi. We are extremely grateful for their support of our students.

Dr. John Chen

Adam Kendall

Dr. Carole Srole

*Historical Society of Southern California
Cemitero Poblano Restaurant*



510 S Lorena St
Los Angeles, CA 90063



Whittier Museum

Owned and operated by the Whittier Historical Society

Visitor Days & Hours:

Tuesday - Friday

10 AM - 4 PM

Saturday

1 PM - 4 PM

Museum Closed on Sunday & Monday

Guided Tours:

Available with advanced reservations

Research Appointments:

Researchers are asked to make an appointment with the curator for use of the archives

Office Phone: (562) 945-3871



Website: www.whittiermuseum.org

Email: info@whittermuseum.org



Cal State L.A. Federal Credit Union

At CSLA FCU we are committed to the credit union philosophy of People helping People.



Mariondale Branch



Banking for students

We're here for YOU!

Cal State L.A. FCU is a member owned not-for-profit credit union. What does that mean; this means more free services and better rates on savings and loans. All profit goes back to the members in the form of better rates and lower fees.

Let us show you what we can do for YOU!

Stop by our branch on Mariondale or visit us on the web at: calstatela-fcu.org.

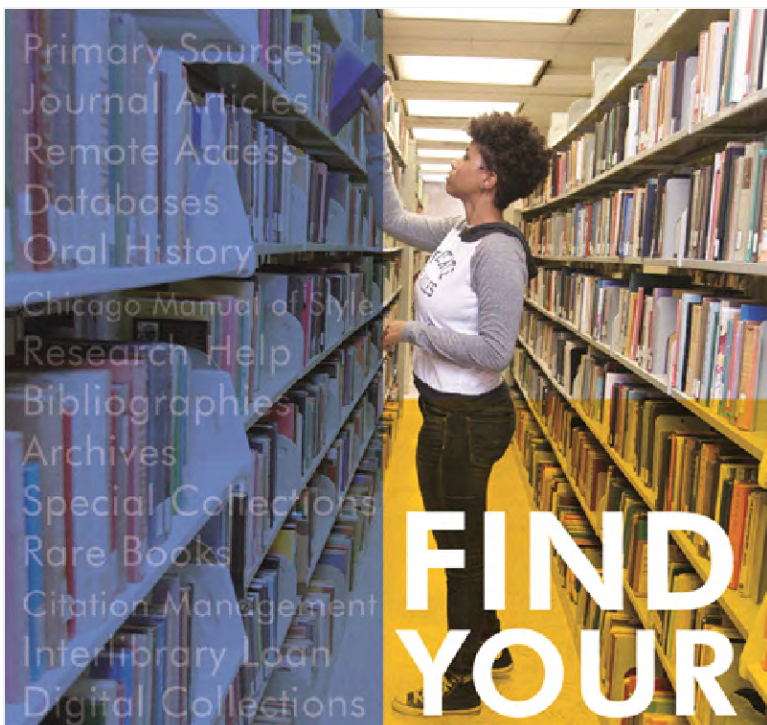


Cal State LA Federal Credit Union



2445 Mariondale Ave • Los Angeles, CA 90032 • (323) 505-2600





Primary Sources
Journal Articles
Remote Access
Databases
Oral History
Chicago Manual of Style
Research Help
Bibliographies
Archives
Special Collections
Rare Books
Citation Management
Interlibrary Loan
Digital Collections

FIND YOUR PLACE

calstatela.libguides.com/history
library.calstatela.edu



KENDALL FAULKER
Social Sciences Librarian
kfaulkn3@calstatela.edu

AT THE UNIVERSITY LIBRARY

The University Library is here to help you succeed in your classes, research, and career development, from quick tips to in-depth research consultations. Specially-selected resources for history students are available in print and online that can be accessed both on- and off-campus 24/7. The Library is a place to study, conduct research, relax, and to work.