



# University

The Campus Community Newsletter



REPORTS

<http://www.calstatela.edu>

Spring 2004, vol. 34, no. 6

Published by the Office of Public Affairs

## Professors honored with CSU award of excellence

On May 18, **Martin G. Brodwin** (*Education-Administration and Counseling*) and **Stanley M. Burstein** (*History*) were honored as two of only four CSU faculty members selected this year for the \$20,000 systemwide CSU Wang Family Excellence Award.

Brodwin's award is in the category of Education and Professional and Applied Sciences; Burstein's award is in Social and Behavioral Sciences and Public Service. The awards were presented during a formal ceremony at the CSU Trustees meeting in Long Beach.

President James M. Rosser praised Burstein for his "superb scholarship and outstanding teaching" noting that he had earned "respect and admiration from students and colleagues worldwide." He described Burstein as "an inspirational and gifted mentor and an inexhaustible source of knowledge in the subjects he teaches."



Stanley M. Burstein



Martin G. Brodwin

President Rosser acknowledged Brodwin for his "dedication and efforts which have played a key part in making Cal State L.A. and the CSU outstanding leaders in the field of rehabilitation education." "[His] exceptional work," said Rosser, "has transformed lives."

In 1999, **Raymond B. Landis**, former dean of the College of Engineering, and

Technology, received the inaugural award for administrative leadership. In 2000, chemistry professor **Carlos G. Gutiérrez** was one of four CSU faculty selected under the category of Natural Sciences, Mathematics, Computer Science, and Engineering.

(continued on page 3)

## Student employee of the year feted



Pictured (l-r): Student Employee of the Year Christina Covarrubias, education master's candidate, and Juanita Arreola (*Career Center*).

During Student Employment Week (April 12-16), Cal State L.A. took part in a week-long celebration by honoring student employees with special activities. The week ended with a Student Employee of the Year Recognition/Awards Luncheon sponsored by the Career Center.

**Christina Covarrubias** was announced the 2004 Student Employee of the Year, by **Juanita Arreola**, student employment coordinator, who presented awards to the nominees at the luncheon.

An exceptional student, Covarrubias is a valued employee of the America Reads Program for the Educational Participation in Communities (EPIC) office. A site coordinator for Ann Street Elementary School, she supervises school tutors.

She motivates Cal State L.A. students to "make significant commitments in community service in support of educating young children," says Arreola.

First runner-up was **Patrick Aksan**, a student immigration technician for the Office of International Programs and Services. Second runner-up was **Sonia Navarro**, a student recruitment intern for the Office of Outreach and Recruitment.

Supported by a proclamation from Los Angeles Mayor James K. Hahn, the event was designed to commend students "who have been successful in the workforce, while continuing to meet the rigors of their academic studies." LA

## Addressing undergrads



U.S. Secretary of Transportation Norman Y. Mineta will address the **Class of 2004** Undergraduate Commencement exercises on Saturday, June 12,

8 a.m., in the stadium.

Mineta became the 14th U.S. Secretary of Transportation in 2001. The Department, created in 1967, brought under one umbrella air, maritime and surface transportation missions. The U.S. transportation system includes 3.9 million miles of public roads and 2 million miles of oil and natural gas pipelines.

Beginning a new tradition, graduates to be conferred master's degrees will be honored at a hooding ceremony on Friday, June 11, 4:30 p.m., in the stadium. LA

For expanded online edition, go to:  
[www.calstatela.edu/UniversityReports](http://www.calstatela.edu/UniversityReports)

## In memoriam


**Wayne Gladish**, collection development librarian, died August 30, 2003, at the age of 55.



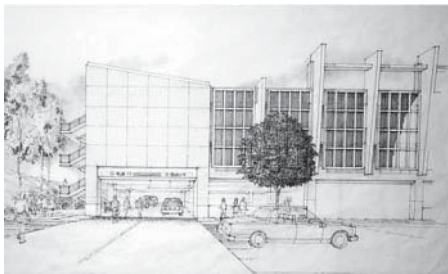
A graduate of Kenyon College with a degree in economics, Gladish earned his Master of Library Science at the SUNY Buffalo School of Library and Information Science. For the past 16 years, Gladish had been a member of the CSULA Library faculty. For ten years previous to that, he was a member of the USC library faculty.


Yvonne Hasegawa, Library thesis coordinator, who assisted Gladish from 1987-1997, described him as "one of the most knowledgeable [librarians] in his profession."

"I had the highest respect for [Wayne], both professionally and personally, and will miss him terribly," said Hasegawa.

Gladish is survived his wife of 33 years, Christine (Kippy), also a campus librarian, and by two brothers. The Library held a memorial service on May 11, 2004. 

## Campus parking report



In October 2003, construction began on a new 1196-space Parking Structure III. Look for construction updates at <[www.calstatela.edu/univ/police](http://www.calstatela.edu/univ/police)>. Future improvements include the Mariondale Lighting Project, which will upgrade lighting and provide a safer walkway. Lot B reopened in April, making more parking spaces available to faculty and staff. 

**For campus events, go to:**  
**[www.calstatela.edu/](http://www.calstatela.edu/calendar)**  
**calendar**

## Know a student who needs a job?


Are students you know looking for a new career or internship experience? Cal State L.A. students now have an opportunity to search for job opportunities through a program offered only at Cal State L.A.—**CSU Advantage LA**.

Launched as a pilot for a program the CSU hopes to expand to other campuses, CSU Advantage LA is an education-employment partnership, developing and promoting employment opportunities to meet California's workforce needs. The program is funded by the CSU and supported by resources from Cal State L.A., the Los Angeles Area Chamber of Commerce, and UNITE-LA.

CSU Advantage LA increases opportunities for "active learning," con-

necting academic content and the "real world." Employers may post job openings on this site for a nominal annual membership fee.

According to program coordinator **Louie A. Lujan**, CSU Advantage LA enhances several career-related initiatives already in place at the University, such as guest lectures, job-shadowing, service learning, internships, career fairs, and career opportunities.

For questions about participating in CSU Advantage LA, contact Louie Lujan, ext. 3-3285, or check out its Web site: <[www.calstatela.edu/univ/cdc/csuvadvantagela/](http://www.calstatela.edu/univ/cdc/csuvadvantagela/)>. 



## Communication studies major is national champion

**Tatiana Simonian**, a communication studies major, was named national champion of dramatic interpretation at the American Forensic Association's (AFA) National Individual Events Tournament (NIET) in Long Beach, CA.



Simonian swept past more than 150 competitors from colleges and universities across the nation in seizing the top honor. This marks Cal State L.A.'s fifth national championship in individual events over the last 11 years.

Simonian's interpretation of "You, My Dear, Are a Very Special Starfish" by Derrick Brown, explores standards of "normalcy" and the costs associated with the imposition of such standards. Simonian also advanced to the semi-final rounds in the category of program oral interpretation.

Additionally, four Cal State L.A. students qualified for the AFA's NIET in a total of 20 different events: **Chris Day**, **Justin Perkins**, **Andrea Snyder**, and **Robert Theiring**. Perkins also advanced to quarter-finals in the category of program oral interpretation, placing him among the top 24 in the country. This is the 17th consecutive year in which Cal State L.A. had earned the right to attend the AFA's NIET.

Along with **Stephanie Hood**, assistant director of forensics, the coaching

staff included grad students **Josh Fleming**, **Javon Johnson**, **Richie Hao** and **Michael Kalustian**.

The NIET is analogous to a track meet, where students must qualify to compete, explains **Kevin Baaske**, director of forensics. "I am very proud of all of the CSULA students who qualified for and competed at the nation's top Individual Event Tournament. Tatiana's outstanding achievement is truly noteworthy." Baaske adds, "I couldn't be more proud of the accomplishments of this individual, this team, and its coaches." 



## University Reports

*University Reports* is published by the Office of Public Affairs. All material must be sent by e-mail, <[cselkin@cslanet.calstatela.edu](mailto:cselkin@cslanet.calstatela.edu)>. For submission guidelines, see <<http://www.calstatela.edu/univ/ppa/ur/urform.htm>>. (Call ext. 3047 if you have no access to the Web.) Copy for the Summer 2004 issue (vol. 34, no. 7) must be received in the Public Affairs Office by Fri., June 11, 2004.

Executive editor—Carol Selkin

Editor—Margie Oi Yu

Copy editor—Nancy Miron

Photography—Stan Carstensen

Layout production—Yuri Watanabe

Printing—Reprographics

## Graduating President's Scholar garners national honor

Biochemistry major **Mary Elizabeth Lee** was recently awarded a Phi Kappa Phi Graduate Fellowship for the 2004-2005 academic year. Lee is one of only 60 students nationwide to receive the \$5,000 Graduate Scholar Award from the national honor society. This is the sixth year since 1998 that a Cal State L.A. student has been among the select national winners of the Phi Kappa Phi graduate fellowship.



Lee will graduate this June with a B.S. in biochemistry with honors from her department and a cumulative 3.8 GPA. Lee, who plans to earn a Ph.D. in biological sciences and pursue a scientific research career

in academia, will attend Massachusetts Institute of Technology this fall.

Recognized early as a high achiever, Lee was admitted in the fall of 2000 as a President's Scholar, a four-year full scholarship. But she was already familiar with the campus and the research opportunities it had to offer; in high school she had spent her summers taking classes through the University's Accelerated College Entrance Program.

In 2002, Lee was selected as a Beckman Scholar, working in the lab of **Krishna L. Foster** (*Chemistry and Biochemistry*). Currently, she is developing a technique capable of characterizing the amounts and photochemical reactivities of a class of chemical pollutants. As a result of her work, Lee took home one of the top awards last year from the 17th Annual CSU Student Research Competition at CSU Stanislaus. Her research ef-

forts have resulted in her coauthorship of a paper recently accepted for publication in the *Journal of Chromatography A*. In 2003, she participated in MIT's Summer Research Program, where she studied the regulation of a bacterial gene called *ssrA* in *Escherichia coli* (*E-coli*).

Lee, demonstrating exceptional leadership, has served as a tutor, secretary and president of the Chemistry and Biochemistry Club.

A Dean's List and General Education Honors Program student, Lee's honors include the Chemical Rubber Company Freshman Chemistry Award, the American Chemical Society Award in Organic Chemistry, and more. She is an active member of the Phi Kappa Phi, Golden Key, and Beta Beta Beta national honor societies.



## CSU Wang Awards (continued from page 1)

**Martin G. Brodwin** ('69 MS), an honored alumnus, is noted for his work in rehabilitation counseling. Since joining the faculty in 1988, Brodwin has served as coordinator for the undergraduate program in rehabilitation services and graduate program in rehabilitation counseling. In 1996, he and a colleague received a \$750,000 four-year Department of Education grant for a training program directed toward rehabilitation counseling and special education graduate students.

Brodwin was presented the 1996 Outstanding Rehabilitation Educator Award by the National Association of Rehabilitation Professionals in the Private Sector. In 1997, he received Cal State L.A.'s Distinguished Alumnus Award under the Charter College of Education category, as well as the 1996-1997 CSULA Outstanding Professor Award.

Brodwin was a commissioner on the Council on Rehabilitation Education (CORE) for nine years. He served as president of the California Rehabilitation Counseling Association, executive council member for the California Association for Counseling and Development, and editorial board member for several professional journals in counseling and rehabilitation. His book, *Medical, Psychosocial, and Vocational*

*Aspects of Disability*, published in 1993 and 2002, has been used as a textbook in over 80 colleges and universities.

Leading Cal State L.A.'s rehabilitation programs to national recognition, Brodwin is a passionate teacher known for his dedication to "at risk" students. His strong support of, and lifelong ties to his students are evidenced by the fact that of the four dozen articles and chapters he has published and the 48 professional presentations he has delivered since joining the university, almost half have been coauthored by students and alumni.

**Stanley M. Burstein**, who joined the faculty in 1968, is chair of the Department of History. He was advisor for CSULA's Social Science teacher preparation major and the faculty advisor for *Perspectives*, a History Department student journal. "Antients and Moderns," an upper division General Education theme that Burstein was instrumental in developing, helps students understand the connection between classical civilization and the modern world.

Burstein's expertise in ancient history, especially in the Hellenic and Hellenistic periods, is internationally recognized. He has been a UCLA Visiting Scholar in the Departments of History, Classics, and Near Eastern Languages and Literatures, and

he has received several awards from the National Endowment for the Humanities. He was selected as a 1992-93 CSULA Outstanding Professor and honored as the first recipient of the President's Distinguished Professor Award in 1997.

Professor Burstein was president of the Association of Ancient Historians and the California Classical Association-Southern Section, and chair of the American Philological Association Committee on Ancient History. He has served as Historian-in-Residence for a National Endowment for the Humanities Institute for secondary school teachers. He has also served on California Department of Education committees reviewing California History-Social Science textbooks and overseeing the STAR (Standardized Testing and Reporting) Program in History. He organized and directed CSULA's History-Social Science Project, which sponsored a Web site to assist area K-12 teachers.

For more than three decades, Burstein has been a dedicated, teaching historian while simultaneously producing outstanding scholarship. This is evidenced in his more than 130 articles, chapters, and reviews; numerous international conference presentations; and the dozen books he has written, edited, or translated.



## Top awards presented to student researchers

Four students recently took home top awards from the 18th Annual CSU Student Research Competition at CSU Northridge. The awards for research and creative scholarly activity were presented to outstanding CSU undergraduate and graduate students in areas that included the sciences and the humanities.

Psychology major **Steven Pan** won the undergraduate first-place award in the Behavioral and Social Sciences category for his presentation, "Sleep, Steroids, and Memory: Effects of Sleep Deprivation and Hormonal Treatment on an Olfactory Task." His faculty mentor was **Sonsoles De Lacalle** (*Biological Sciences*).

Second-place winner in the Behavioral and Social Sciences undergraduate category was anthropology major **Clarus Backes, Jr.**, whose presentation was entitled, "More Than Meets the Eye: Fluorescence Photography for Enhanced Analysis of Pictographs." His faculty mentor was **James Brady** (*Anthropology*).

Winner of the first-place Biological and Agricultural Sciences graduate category was biological sciences major **Julie King**.



Pictured: (l-r) Steven Pan, Julie King and Clarus Backes, Jr. (Not pictured: Hitomi Uchishiba)

Her presentation was on "The Current Distribution of the Fox Squirrel (*Sciurus niger*) in the Los Angeles Metropolitan Area and its Behavioral Interaction with the Native Western Gray Squirrel (*Sciurus griseus*)." Her faculty mentor

was **Alan Muchlinski** (*Biological Sciences*).

Psychology major **Hitomi Uchishiba** also received first place in the graduate Behavioral and Social Sciences category for her research, "False Identification Rate of Sequential Line-ups with Biased Photo Arrays." Her faculty mentor is **Mitchell Eisen** (*Psychology*).

Additionally, six students presenting papers earned the status of campus delegates: undergraduates **Jaime Anguiano** (chemistry) and **Nancy Carrillo** (biochemistry), faculty mentor Carlos Gutiérrez; graduate **Josue Cruz** (mechanical engineering), faculty mentor Chivey Wu; graduate **Haedy Shafeek** (biological sciences), faculty mentor Nancy McQueen; graduate **Steven Han** (chemistry), faculty mentor Yong Ba; and undergraduate **Christopher Martinez** (biochemistry), faculty mentor Raymond Garcia. LA

## NASA fellowship to faculty member

**Tina Salmassi** (*Biological Sciences*) was selected out of 762 individuals as a Faculty Fellow for the 2004 NASA Faculty Fellowship Program (NFFP) at Jet Propulsion Laboratory.



The fellowships are awarded to qualified engineering and science faculty members and other related disciplines for work on collaborative research projects of mutual interest to the fellow and the NASA center.

Salmassi, who earned her B.S. in civil engineering from UCLA and her M.S. and Ph.D. from Caltech in environmental engineering science, is a microbial ecologist studying the diversity of bacteria in a variety of environments such as soils, natural waters, plant surfaces, and the hindgut of termites. Her research aims to understand the chemistry carried out by microscopic organisms and their role in the biogeochemical cycling of the elements. LA

## Around campus . . .



The Pat Brown Institute honored U.S. Senator Dianne Feinstein, U.S. Representative Hilda Solis (l), and labor leader and community activist Henry "Hank" Lacayo (r) on April 30 at its 23rd Annual Awards Dinner at the Millennium Biltmore Hotel. Robert Foster, president of Southern California Edison, was the corporate dinner host.



As part of the second annual East Los Angeles Kids Judge! Neuroscience Fair, April 14, Neuroscience Club members made presentations that explain how brain and nerve cells function. At this unconventional science fair, college students and faculty competed against each other while the third graders judged. "Jump Start Your Nerves" was the winning exhibit.



The first-ever Luckman U.S. Latino Film/Video Festival—*Reel Rasquache* showcased over 20 recent independent U.S. Latino-produced films and videos at the Luckman on April 17-18. Highlights of the festival included a special screening of the newly restored *¡Alambrista!* (*The Fence Cutter*). Above, actress Lupe Ontiveros is honored by director Jesus Treviño.