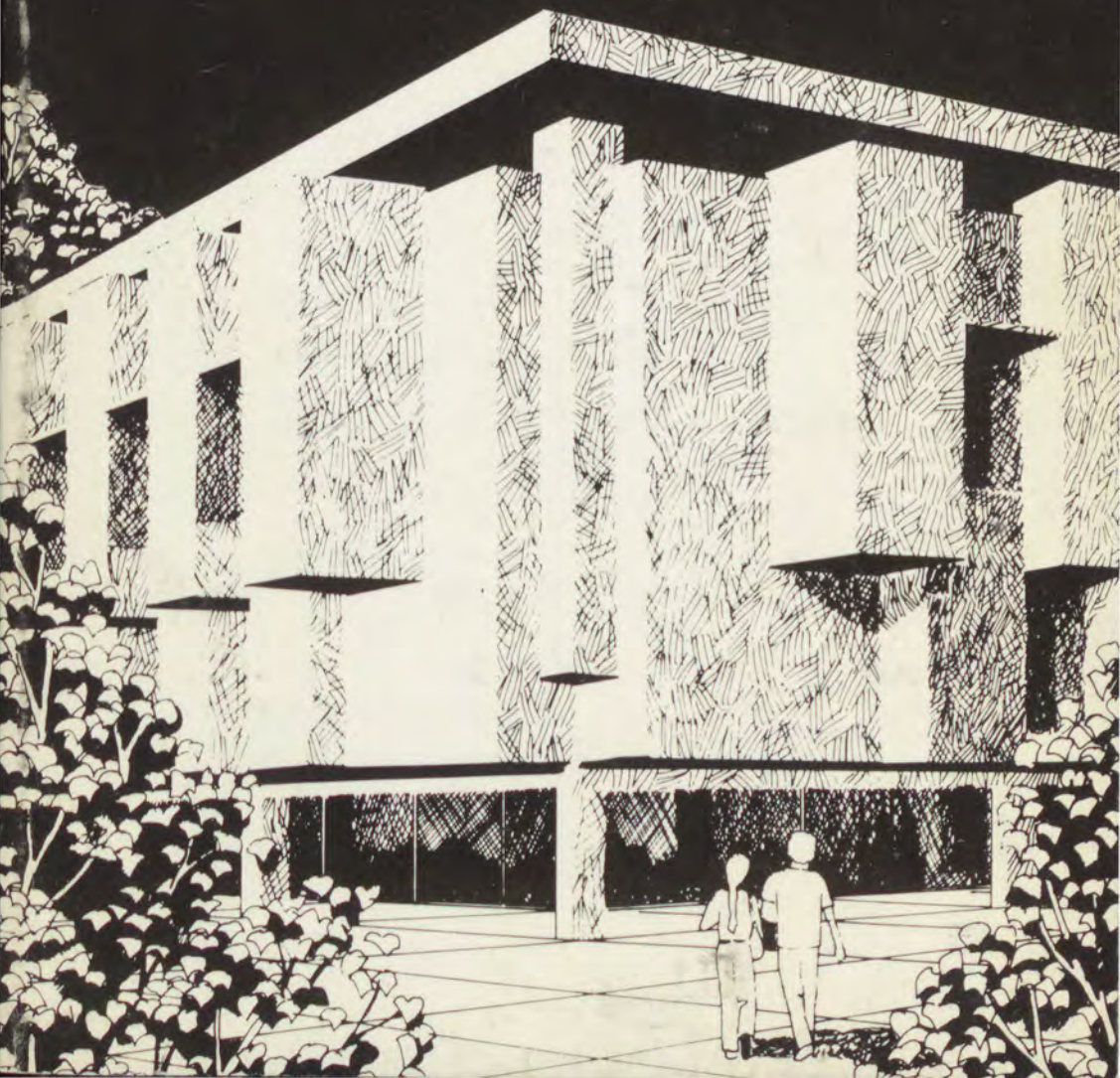


1984/1985 Supplement

to 1983/1984 General Catalog

California State University, Los Angeles

The California State University



PRESIDENT'S MESSAGE



As you read through this catalog, you will discover a university that provides many unique opportunities and advantages to help you attain your educational goals as an undergraduate or graduate student. Here you will work with an exceptional faculty of well-trained teachers and scholars, many of whom have national reputations in their fields. Class sizes are kept small to facilitate maximum contact between students and faculty, and programs designed to develop intellectual curiosity and to prepare you to make thorough, reasoned judgments about perplexing problems inherent in our complex society. At Cal State L.A., the faculty and staff are dedicated to providing you with the best education possible—one that prepares you for civic and social responsibility in an increasingly diverse society. With your commitment, that goal shall be achieved. I extend to you a most cordial welcome.

A handwritten signature in dark ink that reads "James M. Rosser". The signature is written in a cursive style with a large, looping initial "J".

James M. Rosser,
President



**1984-85
SUPPLEMENT TO
1983-84 CATALOG**



**California State University
Los Angeles**

**5151 State University Drive
Los Angeles, California 90032**

USE OF THIS SUPPLEMENT

California State University, Los Angeles has published this bulletin to be used during the 1984–1985 academic year as a supplement to the 1983–1984 catalog. When used with your catalog, the supplement will serve as the official university guide this year. It is important that the two documents be used together at all times to ensure the accuracy of information contained within them. New and returning students who enter Cal State L.A. during the 1984–1985 academic year must satisfy degree requirements in the *supplement* except where no change has occurred since the 1983–1984 catalog was published.

You should continue using the catalog as your primary reference tool. This supplement contains changes in the curriculum (course and program modifications) and regulations, and new material, also. For your convenience, page references to the 1983–1984 catalog appear throughout the supplement. If you have questions, please consult your academic adviser.

You may purchase the supplement in person or by mail from the Trident Shop (University bookstore). The price, established under regulations of the Board of Trustees of The California State University, is stated on the back cover. To order by mail send check or money order with request to: California State University, Los Angeles, *Attention: Trident Shop*, 5153 State University Drive, Los Angeles, CA 90032. California residents should include \$1.50 to cover the purchase price plus state sales tax and shipping and handling charges. Add an additional \$1 for mailing to countries other than the United States and its territories. If you wish to order both the supplement and the 1983–1984 catalog, send \$6.35 if ordering within the state and \$6.85 for out-of-state orders. Send \$7.85 for orders outside the United States and its territories.

This supplement was prepared under the direction of the Associate Vice President for Academic Affairs—Planning and Resources. Linda Trevillian, Administrative Assistant to the Associate Vice President, served as editor and coordinated the publication of the supplement with the assistance of Marshall Nakagawa, Publications Manager, Office of Public Affairs. Fred Relyea of the Office of State Printing supervised the planning and printing operations. Information in this supplement is revised to January 1, 1984.

Changes in Rules and Policies

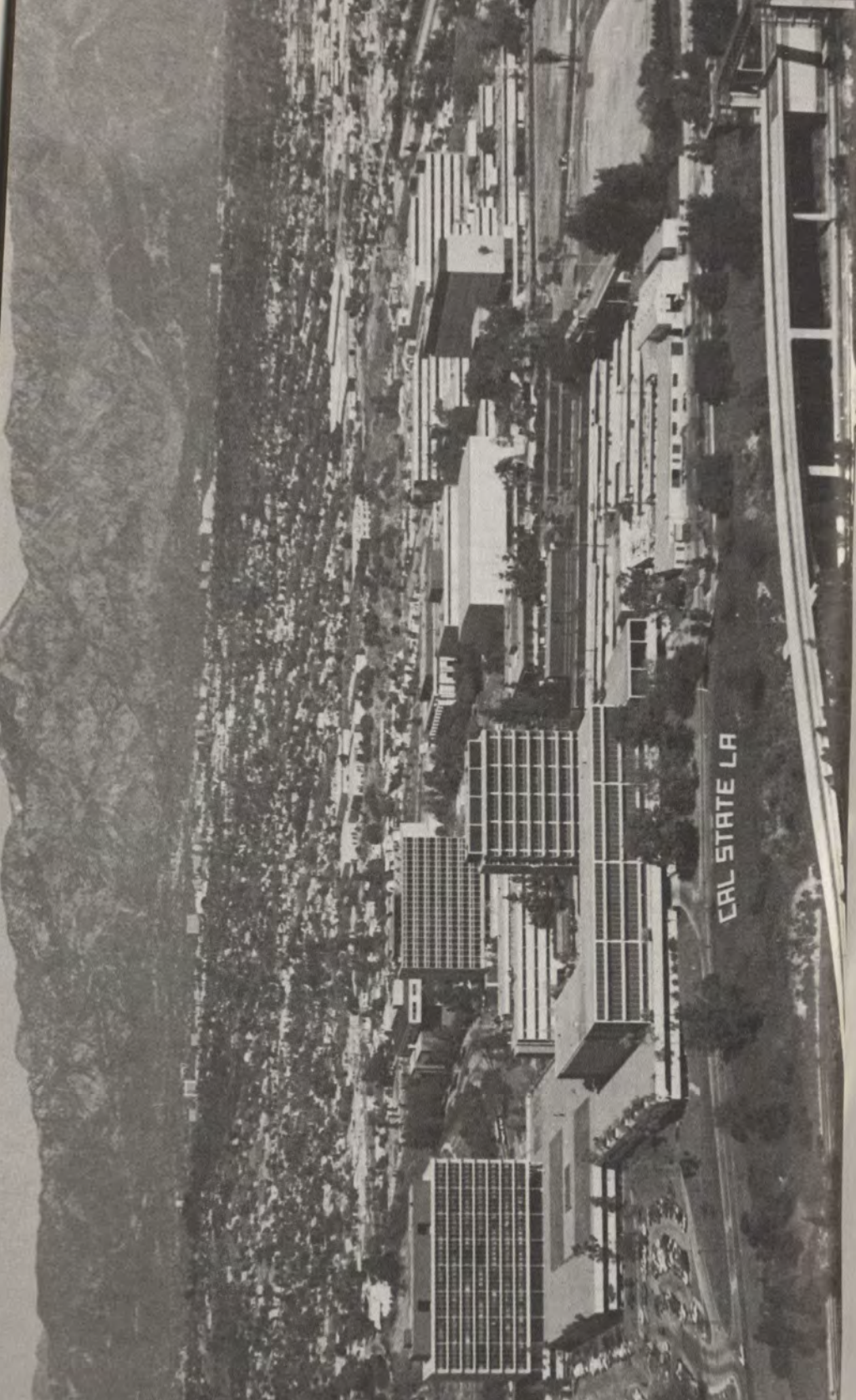
Although every effort has been made to ensure the accuracy of the information in this supplement, students and others who use it should note that laws, rules, and policies change from time to time and that these changes may alter the information contained in this publication. Changes may come in the form of statutes enacted by the Legislature, or rules and policies adopted by the Board of Trustees of The California State University, by the Chancellor or designee of The California State University, or by the President or designee of the institution. Further, it is not possible in a publication of this size to include all of the rules, policies, and other information that pertain to the student, the institution, and The California State University. More current or complete information may be obtained from the appropriate department, school, or administrative office.

Nothing in this supplement shall be construed, operate as, or have the effect of an abridgment or a limitation of any rights, powers, or privileges of the Board of Trustees of The California State University, the Chancellor of the California State University, or the President of the campus. The Trustees, the Chancellor, and the President are authorized by law to adopt, amend, or repeal rules and policies that apply to students. This supplement does not constitute a contract or the terms and conditions of a contract between the student and the institution or The California State University. The relationship of the student to the institution is one governed by statute, rules, and policy adopted by the Legislature, the Trustees, and the Chancellor, the President, and their duly authorized designees.

Familiarity with university rules and regulations published in this supplement shall be the responsibility of each student and faculty member, and of those administrative officers concerned with academic matters.

Nondiscrimination Policy

California State University, Los Angeles affirms its commitment to equality of opportunity for all individuals. This commitment requires that no discrimination shall occur regarding admission or access to, or treatment or employment in, any program or activity of the University, on the basis of race, color, religion, sex, sexual orientation, national origin, age, marital status, pregnancy, disability, disabled veteran's or Vietnam Era veteran's status, or any other classification that precludes a person from consideration as an individual. This policy is in accord with Title IX of the Education Amendments of 1972, as amended, sections 503 and 504 of the Rehabilitation Act of 1973, as amended, Title VI of the Civil Rights Act of 1964, and related administrative regulations and executive orders. Inquiries concerning the application of Title IX, sections 503 and 504, and other nondiscrimination laws may be referred to Charon D'Aiello, affirmative action coordinator, telephone (213) 224-2454, the campus officer assigned the administrative responsibility for reviewing such matters. Title IX inquiries may also be directed to the regional director of the Office for Civil Rights, Region 9, 1275 Market Street, 14th Floor, San Francisco, California 94103.



CAL STATE LA

Academic Reorganization of the University

A reorganization of the academic departments and schools that comprise our University will occur effective fall 1984, as a means of enabling the University to employ new ways of achieving its missions and goals (these are stated on page 15 of the 1983/84 catalog). As stated in that catalog, the philosophic goals of the University are:

“to develop and support academic programs and structures that serve to transmit traditional cultures and to advance human knowledge.”

The overriding reasons for the implementation of this reorganization include the need to present an academic structure that fosters more comprehensive planning for the future of the University, recognizes its urban focus and community service functions, presents a more reasonable homogeneity of interest in the areas represented within the schools, encourages the nurturing of more cohesive school programs, allows programs to achieve their maximum opportunity for growth, and permits the schools that contain those programs to mature in a more effective way than had been possible in the past.

A display of the new schools and divisions, and the academic departments and programs within them, appears at the end of this supplement.



Academic Calendar

SUMMER QUARTER 1984

June 18 (Monday)	Instruction begins
July 4	Independence Day; University closed
August 27– September 1	Final examinations
September 3	Labor Day; University closed
September 6–15	Student recess

FALL QUARTER 1984

September 20 (Thursday)	Instruction begins
October 8	Columbus Day observed; University open
November 11	Veterans' Day; University open
November 22–24	Thanksgiving holidays; University closed
December 3–8	Final examinations
December 12–January 5	Student recess

WINTER QUARTER 1985

January 1	New Year's Day; University closed
January 7 (Monday)	Instruction begins
January 21	Martin Luther King Jr.'s birthday observed; University closed
February 12	Lincoln's birthday; University open
February 18	Washington's birthday observed; University closed
March 18–23	Final examinations
March 27–30	Student recess

SPRING QUARTER 1985

April 1 (Monday)	Instruction begins
May 3	Honors Convocation; all-University event
May 27	Memorial Day observed; University closed
June 10–15	Final examinations
June 15	Commencement; all-University event
June 19–22	Student recess

SUMMER QUARTER 1985

June 24 (Monday)	Instruction begins
July 4	Independence Day; University closed
September 2	Labor Day; University closed
September 3–9	Final examinations
September 12–21	Student recess

FALL QUARTER 1985

September 26 (Thursday)	Instruction begins
October 14	Columbus Day observed; University open
November 11	Veterans' Day; University open
November 28–30	Thanksgiving holidays; University closed
December 9–14	Final examinations
December 18–January 4	Student recess

Dates are subject to change. A more detailed calendar of academic dates and deadlines is published each quarter in the Schedule of Classes.

1984

JUNE

S	M	T	W	T	F	S
					1	2
3	4	5	6	7	8	9
10	11	12	13	14	15	16
17	18	19	20	21	22	23
24	25	26	27	28	29	30

JULY

S	M	T	W	T	F	S
1	2	3	4	5	6	7
8	9	10	11	12	13	14
15	16	17	18	19	20	21
22	23	24	25	26	27	28
29	30	31				

AUGUST

S	M	T	W	T	F	S
				1	2	3
4	5	6	7	8	9	10
11	12	13	14	15	16	17
18	19	20	21	22	23	24
25	26	27	28	29	30	31

SEPTEMBER

S	M	T	W	T	F	S
						1
2	3	4	5	6	7	8
9	10	11	12	13	14	15
16	17	18	19	20	21	22
23	24	25	26	27	28	29
30						

OCTOBER

S	M	T	W	T	F	S
	1	2	3	4	5	6
7	8	9	10	11	12	13
14	15	16	17	18	19	20
21	22	23	24	25	26	27
28	29	30	31			

NOVEMBER

S	M	T	W	T	F	S
					1	2
3	4	5	6	7	8	9
10	11	12	13	14	15	16
17	18	19	20	21	22	23
24	25	26	27	28	29	30

DECEMBER

S	M	T	W	T	F	S
						1
2	3	4	5	6	7	8
9	10	11	12	13	14	15
16	17	18	19	20	21	22
23	24	25	26	27	28	29
30	31					

Classes No Classes University Holidays

1985

JANUARY

S	M	T	W	T	F	S
		1	2	3	4	5
6	7	8	9	10	11	12
13	14	15	16	17	18	19
20	21	22	23	24	25	26
27	28	29	30	31		

FEBRUARY

S	M	T	W	T	F	S
					1	2
3	4	5	6	7	8	9
10	11	12	13	14	15	16
17	18	19	20	21	22	23
24	25	26	27	28		

MARCH

S	M	T	W	T	F	S
						1
2	3	4	5	6	7	8
9	10	11	12	13	14	15
16	17	18	19	20	21	22
23	24	25	26	27	28	29
30	31					

APRIL

S	M	T	W	T	F	S
	1	2	3	4	5	6
7	8	9	10	11	12	13
14	15	16	17	18	19	20
21	22	23	24	25	26	27
28	29	30				

MAY

S	M	T	W	T	F	S
			1	2	3	4
5	6	7	8	9	10	11
12	13	14	15	16	17	18
19	20	21	22	23	24	25
26	27	28	29	30	31	

JUNE

S	M	T	W	T	F	S
						1
2	3	4	5	6	7	8
9	10	11	12	13	14	15
16	17	18	19	20	21	22
23	24	25	26	27	28	29
30						

JULY

S	M	T	W	T	F	S
	1	2	3	4	5	6
7	8	9	10	11	12	13
14	15	16	17	18	19	20
21	22	23	24	25	26	27
28	29	30	31			

AUGUST

S	M	T	W	T	F	S
				1	2	3
4	5	6	7	8	9	10
11	12	13	14	15	16	17
18	19	20	21	22	23	24
25	26	27	28	29	30	31

SEPTEMBER

S	M	T	W	T	F	S
1	2	3	4	5	6	7
8	9	10	11	12	13	14
15	16	17	18	19	20	21
22	23	24	25	26	27	28
29	30					

OCTOBER

S	M	T	W	T	F	S
		1	2	3	4	5
6	7	8	9	10	11	12
13	14	15	16	17	18	19
20	21	22	23	24	25	26
27	28	29	30	31		

NOVEMBER

S	M	T	W	T	F	S
					1	2
3	4	5	6	7	8	9
10	11	12	13	14	15	16
17	18	19	20	21	22	23
24	25	26	27	28	29	30

DECEMBER

S	M	T	W	T	F	S
1	2	3	4	5	6	7
8	9	10	11	12	13	14
15	16	17	18	19	20	21
22	23	24	25	26	27	28
29	30	31				

Table of Contents

Academic Reorganization of the University	5
Academic Calendar	6
The University	
Kennedy Memorial Library	11
CSU Consortium	11
International Programs	11
Certificate Programs	12
Institutes	13
Student Services and Activities	
Housing Services	15
Children's Day Care Center	15
Athletics	15
Admission	
Admission Procedures and Policies	17
First-Time Freshman Applicants	17
Undergraduate Transfer Applicants	19
Undergraduate Application Procedures	20
Entry-Level Mathematics (ELM) Requirement	21
Procedures and Regulations	
Registration	22
Schedule of Fees 1983/84	23
Transcript of Academic Record	25
Course Abbreviations	25
Grading System	25
Repeating Courses	25
Academic Renewal	26
Scholastic Status (<i>Grade Point Average</i>)	26
Student Conduct: Rights and Responsibilities	26
Undergraduate Study	
Bachelor's Degrees	27
Programs with Waiver Status for Credentials	27
Minors	28
Preprofessional Study	28
General Education	28
Writing Skills (Upper Division Writing) Requirement	32
Graduation with Honors	33
Undergraduate Programs	
Anthropology	35
Art	35
Biology	36
School of Business and Economics	39
Chemistry	42
Chicano Studies	42
Child Development	42
Communication Studies	43
Criminal Justice	44
School of Education	45
School of Engineering	49
English	51
Foreign Languages and Literatures	51

Undergraduate Programs (continued)

Geography and Urban Studies.....	52
Geology.....	54
Health and Safety Studies.....	55
History.....	55
Home Economics.....	59
Industrial Studies.....	59
Latin American Studies.....	60
Liberal Studies.....	63
Mathematics and Computer Science.....	63
Music.....	64
Nursing.....	64
Pan-African Studies.....	66
Philosophy.....	67
Physical Education and Recreation/Leisure Studies.....	68
Physics and Astronomy.....	68
Political Science.....	71
Psychology.....	72
Social Science.....	73
Sociology and Social Work.....	74
Theatre Arts.....	75
Youth Agency Administration.....	75

Graduate Study

Graduate Degrees.....	77
Admission.....	77
Procedures and Regulations.....	77
Graduate Writing Proficiency Requirement.....	77

Graduate Programs

Art.....	79
Biology.....	80
School of Business and Economics.....	81
Chemistry.....	84
Communication Studies.....	84
School of Education.....	85
School of Engineering.....	89
Foreign Languages and Literatures.....	89
Health and Safety Studies.....	89
Health Care Management.....	89
Industrial Studies.....	89
Latin American Studies.....	89
Mathematics and Computer Science.....	89
Music.....	90
Nursing.....	90
Physical Education and Recreation/Leisure Studies.....	90
Political Science.....	92
Psychology.....	92

Full-Time Faculty..... 95**The California State University.....** 97**Appendices.....** 97**Academic Structure of the University.....** 97



THE UNIVERSITY

THE JOHN F. KENNEDY MEMORIAL LIBRARY

(The following addendum to existing information about the Library supplements and replaces the *sixth* paragraph on page 17.)

Cooperative Services

Access to the information resources and services of all California State University libraries is made possible through the CSU Mutual Library Use Arrangement. Students, faculty, and staff may use their photo-ID cards as library cards at any CSU campus.

In addition, the university libraries of Cal State L.A. and the University of Southern California offer reciprocal borrowing privileges on an in-person basis. Information about eligibility and how to apply for these direct borrowing privileges is available at the Library Circulation Counter.

The L.A. Co-op, a consortium comprised of the Cal State L.A. university library, the USC university library, and the Los Angeles County Public Library, provides a monthly bookmobile service to the campus community. Popular library materials may be borrowed from the Los Angeles County Public Library bookmobile and returned either on campus or at any of the county's branch libraries.

A UCLA/Cal State L.A. borrowing arrangement permits our students and faculty members to borrow from UCLA directly. Undergraduates may use this service upon payment to UCLA of \$6 for a six-month courtesy card or \$12 for a twelve-month card.

THE CONSORTIUM OF THE CALIFORNIA STATE UNIVERSITY

(page 18—last paragraph—addendum)

The systemwide Admissions and Records Office may be reached by dialing the following local numbers: Los Angeles and Long Beach areas (213) 498-4119; all other areas in California, toll free (800) 352-7517.

International Programs (page 18)

The California State University (CSU) International Programs offers students the opportunity to continue their studies overseas for a full academic year while they remain enrolled at their home CSU campus. The International Programs' primary purposes are to enable selected students to gain a firsthand understanding of other areas of the world and to advance their knowledge and skills within specific academic disciplines in pursuit of established degree objectives.

A wide variety of academic majors may be accommodated by the 25 foreign universities cooperating with the International Programs in 15 countries around the globe. The affiliated institutions are: the University of São Paulo (Brazil); the universities of the Province of Quebec (Canada); the University of Copenhagen

(through Denmark's International Student Committee's Study Division); the University of Provence (France); the universities of Hamburg, Heidelberg, and Tubingen (Germany); the Hebrew University of Jerusalem (Israel); the University of Florence (Italy); Waseda University (Japan); the Iberoamericana University (Mexico); Massey University and Lincoln University College (New Zealand); the Catholic University of Lima (Peru); National Chengchi University (Republic of China/Taiwan); the universities of Granada and Madrid (Spain); the University of Uppsala (Sweden), and Bradford and Bristol universities (the United Kingdom). Information about academic course offerings available at these locations is in the International Programs Bulletin which may be obtained from the International Programs representative on campus.

Eligibility for application is limited to those students who will have upper division or graduate standing at a CSU campus by September 1985, who possess a cumulative grade point average of 2.75 for all college level work completed at the time of application (some programs require a 3.0 cumulative grade point average), and who will have completed required language study when applicable. Selection is competitive and is based on home campus recommendations and the applicant's academic record. Final selection is made by the Office of International Programs in consultation with a systemwide faculty selection committee.

The International Programs support all tuition and administrative costs overseas for each of its participants to the same extent that such funds would be expended to support similar costs in California. Students assume responsibility for all personal costs, such as transportation, room and board, and living expenses, as well as for home campus fees. Because they remain enrolled at their home CSU campus while studying overseas, International Programs students earn full residence credit for all academic work completed while abroad and remain eligible to receive any form of financial aid (other than work study) for which they can individually qualify.

Information and application materials may be obtained from the Office of the Associate Vice President for Academic Affairs—Academic Services (SA 108; phone 224-2644) or by writing to The California State University International Programs, 400 Golden Shore, Suite 300, Long Beach, California 90802. Applications for the 1985-86 academic year overseas must be submitted by February 1, 1985.

CERTIFICATE PROGRAMS (page 19)

Occupational Safety and Health Professional. Offered by the Department of Health and Safety Studies (224-3356), the program prepares occupational safety and health professionals to function as generalists in implementing safety and loss control programs in industry or medical institutions. This program was developed in accordance with federal and state legal occupational safety and health acts. Applicable toward the baccalaureate or the master's degree in health and safety studies.

Retail Professional Development. Offered by the Department of Marketing (224-2811) in conjunction with the Institute of Retail Management and the Office of Continuing Education, the program is designed to provide the technical skills necessary for employment or advancement to management-level positions in multiunit retail organizations, and to provide the technical training needed to initiate and

operate a retail enterprise. The program offers students a well-rounded exposure to management of the various phases of a retail operation. Applicable toward the baccalaureate in business administration. Available through the Office of Continuing Education (224-3501) for nonmatriculated students.

Voluntary Youth Agency Administration. Offered by the School of Letters and Science in conjunction with American Humanics, Inc. (224-3671), the program is designed to prepare professionals for careers in youth agency administration. Applicable toward baccalaureate programs.

Army ROTC (page 24)

During the 1984/85 academic year, one class will be offered during each of the fall, winter, and spring quarters at Cal State L.A.

INSTITUTES (page 30)

Productivity Council of the Southwest. *Delete entire section. The council no longer exists.*





STUDENT SERVICES AND ACTIVITIES

HOUSING SERVICES (page 34)

All information remains the same except that the on-campus housing will open fall 1984. More information and housing applications may be obtained by calling University Housing Services (213) 224-2995.

OTHER SERVICES (page 38)

Children's Day Care Centers (page 38)

All information remains the same; however, the new, permanent *Anna Bing Arnold Children's Center*, with a consolidated program, is expected to open at the north end of campus in the fall of 1984.

ATHLETICS (Page 40—Addendum to Existing Information)

Normal Progress for Varsity Athletes

Normal academic progress for varsity athletes is defined as completion within five academic years of the minimum 186 units required for graduation. Cal State L.A. bachelor's degrees require a minimum of 60 units in upper division courses. Year end cumulative units * in courses acceptable toward the bachelor's degree, to satisfy normal progress requirements, are summarized below:

<i>Year</i>	<i>Required Minimum Cumulative Units **</i>
1 (3 quarters)	36
2 (6 quarters)	72
3 (9 quarters)	110***
4 (12 quarters)	147
5 (15 quarters)	186

Student athletes must maintain an overall "C" (2.0) grade point average at all times to make normal progress in order to compete in varsity athletics. The varsity's athlete's overall grade point average, computed at the completion of each quarter of attendance, will be determined by the end of the second week of the subsequent quarter.

*Year end cumulative units will be determined as of the anniversary date of the student's first quarter of enrollment.

**Students who plan to graduate in four years must complete more than the minimum required number of units and should consult their major department adviser for total graduation requirements.

***It is recommended that all lower division courses be completed by the end of the third year.



ADMISSION

Admission Procedures and Policies (page 44)

Importance of Filing Complete, Accurate, and Authentic Application for Admission Documents

The CSU advises prospective students that they must supply complete and accurate information on the application for admission, residence questionnaire, and financial aid forms. Further, applicants must submit authentic and official transcripts of all previous academic work attempted. Failure to file complete, accurate, and authentic application documents may result in denial of admission, cancellation of academic credit, suspension, or expulsion (Section 41301, Article 1.1, Title 5, *California Administrative Code*).

First-Time Freshman Applicants (page 44)

First-time freshman eligibility is determined by (1) high school grade point average, (2) scores on either the ACT or SAT tests, (3) whether the applicant is a resident of California, and (4) whether the applicant has completed four years of college preparatory English and two years of college preparatory mathematics.

Test Requirements (new)

Applicants who have completed fewer than 56 semester or 84 quarter units of transferable college work must submit scores for either the Scholastic Aptitude Test of the College Board (SAT) or the American College Test Program (ACT). Registration forms and test dates for either test may be obtained from school or college counselors or from a campus Testing Office. Or, you may write to the following addresses:

The College Board (SAT)
Registration Unit, Box 592
Princeton, New Jersey 08541

American College Testing Program (ACT)
Registration Unit, P.O. Box 168
Iowa City, Iowa 52240

New Admission Requirements Effective Fall 1984 (page 45)

Grade Point Average and Test Score Requirement

To determine eligibility, the campus needs the applicant's high school grade point average (for the final three years of high school, not counting physical education or military science) and either the total score from the Scholastic Aptitude Test (SAT) or the composite score from the American College Test (ACT). These are used to compute an eligibility index. Applicants can calculate their index by multiplying their grade point average by 800 and adding their SAT total score. Those who took the ACT should multiply their grade point average by 200 and add 10 times their ACT composite score. If their high school GPA is higher than 3.2 (3.6 for nonresidents) they are exempt from the test requirement.

Residents—Applicants who were graduated from a California high school or are legal residents of California for tuition purposes need a minimum eligibility index of 3072 using the SAT or 741 using the ACT. The table on page 684 of the 1983/84 catalog shows the grade point averages and test scores needed.

Nonresidents—Applicants who are neither a graduate of a California high school nor a legal resident for tuition purposes need a minimum eligibility index of 3402 (SAT) or 826 (ACT).

College Preparatory English Requirement

Beginning with admission to the fall 1984 quarter and thereafter, all entering freshmen must have completed four years of high school college preparatory English with grades of C or better. If a high school did not offer a fourth year of college preparatory English, or the English courses completed were not college preparatory, CSU campuses may waive a portion of the requirement during the 1984–86 phase-in period.

Regular 9th and 10th grade English courses are usually college preparatory. Most English courses for 11th and 12th graders are considered college preparatory if they include substantial instruction in reading and writing and frequent writing assignments. Written work should require critical thinking and the presenting of ideas in clear, sharp, and persuasive written form. Regular writing assignments, critically graded and rewritten, are the best preparation for college work. College preparatory English courses also should require wide reading in both modern and classical literature, fiction and nonfiction. There should be a close relationship between reading and written work.

Courses in speech, drama, or journalism are acceptable if they include the kinds of reading and writing experiences described. Courses in remedial reading and writing are not college preparatory. Beginning or intermediate courses in English as a Second Language (ESL) are not considered college preparatory although a year of advanced level ESL is acceptable as one year of the four-year English requirement. If there are questions about which courses are college preparatory, a high school counselor or other staff members can advise you.

College Preparatory Mathematics Requirement

Beginning with admission to the fall 1984 quarter and thereafter, all entering freshmen must have completed two years of high school college preparatory mathematics with grades of C or better. Most students will take algebra and geometry; second year algebra is strongly recommended. Applicants who plan to complete a college major in mathematics, science, engineering, computer science, premedicine or other science-related fields, business, or economics should take four years of college preparatory mathematics. Business or technical mathematics, arithmetic, prealgebra, and similar basic classes are not college preparatory.

Additional College Preparatory Courses Recommended

English and mathematics are not the only high school courses needed to prepare for college. There are many college courses in which the instructor will expect students to have had high school preparation in biology, physics, chemistry, history, economics, geography, as well as art and music. Some college majors require high school preparation in a foreign language.

Students should take full advantage of the college preparatory courses offered in high school, continuing studies, particularly in English and mathematics, through the entire senior year. A solid college preparatory program will be valuable no matter where applicants go to college and will prepare them to compete on an equal basis with other students.

TOEFL Required of Applicants Who Attend Foreign Institutions

Beginning with admission to the fall 1984 quarter and thereafter, all undergraduate applicants, regardless of citizenship, who have not attended for at least three years schools at a secondary level or beyond where English is the principal language of instruction are required to earn a minimum score of 550 on the Test of English as a Foreign Language (TOEFL).

Eligibility Index

Refer to grade point average and test score requirements stated above.

Undergraduate Transfer Applicants (Resident and Nonresident)

(page 46)

Grade Point Average and Subject Requirements

Applicants in good standing at the last college or university attended can qualify for admission by meeting one of the following standards.

1. They graduated from high school prior to spring 1984, and
 - a. *were eligible as a freshman* under 1984 standards and have a grade point average of 2.0 (C) or better in all *transferable** college units attempted, *or*
 - b. *were not eligible as a freshman* under 1984 standards and have completed at least 56 *transferable** semester units or 84 *transferable** quarter units, with a grade point average of 2.0 (C) or better if they are California residents for tuition purposes (2.4 if nonresidents).
2. They graduated from high school in the spring of 1984 or later, and
 - a. *were eligible as a freshman* under 1984 standards and have a grade point average of 2.0 (C) or better in all *transferable** college units attempted, *or*
 - b. *were eligible as a freshman except* for the high school subject requirements in English and mathematics, have satisfied any deficiencies by equivalent course work, and have a grade point average of 2.0 (C) or better in all *transferable** college units attempted, *or*
 - c. *were not eligible as a freshman*, have completed at least 56 *transferable** semester units or 84 *transferable** quarter units with a grade point average of 2.0 (C) or better if a California resident for tuition purposes (2.4 if nonresident) and have satisfied any high school subject deficiencies in English and mathematics by equivalent course work.

* *Transferable* courses are those designated for that purpose by the college where the courses were taken.

NOTE: Effective fall 1986 and for all subsequent terms, transfer applicants must meet standard 2a, 2b, or 2c regardless of the date of high school graduation.

International (Foreign Visa) Applicants *(page 47)*

All information remains the same except that *all* applicants to the University (*for-*

merly only those on a visa or who were not permanent U.S. residents) must have attended, for at least three years (formerly one year), schools at the secondary level or beyond, where English is the principal language of instruction, in order to be exempted from the TOEFL requirement.

Special Admission Categories (page 49) (new program)

Early Entrance Program (EEP).

Cal State L.A.'s Early Entrance Program (EEP) was created to meet a demand for an educational program to serve highly gifted students who need the academic challenges of a university environment in order to develop intellectually, but who are chronologically younger than traditional undergraduates and who have not yet graduated from high school. Students who are less than 14 years old at the start of the fall quarter but who have at least started the seventh grade are candidates for the program. Participation is open by invitation and admission is based on performance in an academic assessment inventory administered by the program director, personal interview of the applicants and their parents, and, when appropriate, interview of the gifted coordinator or principal of the applicants' home school.

EEP students begin by taking a limited number of units at Cal State L.A. while still enrolled at their home school. Those whose academic and personal performances are judged adequate may progress to full-time university enrollment on a gradual basis. Regular meetings with the program director are mandatory, and participation in scheduled activities is required. EEP students may apply for scholarship assistance and are eligible for the General Education Honors Program when they have become full-time students. For further information contact the EEP director at (213) 224-3841.

Undergraduate Application Procedures

 (page 50)

All information remains the same except the application fee which is now \$35.

APPLICATION FILING PERIODS

 (page 51)

<i>Terms in 1984-85</i>	<i>Applications First Accepted</i>	<i>Filing Period Duration</i>	<i>Student Notification Begins</i>
Summer Qtr. 1984	Feb. 1, 1984	Each campus accepts applications until capacities are reached. Most campuses accept applications up to a month prior to the opening day of the term. Some campuses will close individual programs as they reach capacity.	March 1984
Fall Sem. or Qtr. 1984	Nov. 1, 1983		Dec. 1983
Winter Qtr. 1985	June 1, 1984		July 1984
Spring Sem. or Qtr. 1985	Aug. 1, 1984		Sept. 1984

Transcript and Admission Test Score Requirements

 (page 51)

Undergraduate transfer students are required to comply with the following transcript and test score requirements as part of the application procedures for admission. Classifications of applicants apply as of the date of intended enrollment.

<p>Applicants with fewer than 84 quarter units completed</p> <p>Transcripts: <i>One</i> from high school of graduation; <i>two</i> from each college attended.</p> <p>Test Score: ACT or SAT.</p>
<p>Applicants with 84 or more quarter units completed (also second baccalaureate applicants)</p> <p>Transcripts: <i>Two</i> from each college attended.</p>
<p>Returning Students</p> <p>Transcripts: <i>Two</i> from each college attended since last enrollment at Cal State L.A.</p>
<p>Engineering Majors</p> <p>Transcripts: <i>Two</i> from high school of graduation; <i>two</i> from each college attended.</p>
<p>Nursing Majors</p> <p>Transcripts: <i>One</i> sent directly to Admissions Office and <i>one</i> to Department of Nursing from each college and school of nursing attended.</p>

If the applicant is admitted, one copy of each official transcript will be forwarded to the major department or, for undecided majors, to the Advisement and Counseling Center.

(no further changes in this section.)

Supplementary Admission Criteria (page 52)

All information remains the same except the name of the publication in the final sentence. The new name is *CSU School and College Review*.

Entry-Level Mathematics Requirement (page 58)

(The following information replaces the *first* paragraph about the ELM examination on page 58 of the 1983/84 catalog. All other information remains the same.)

Each entering CSU student who is subject to 1983/84 or later catalog requirements must demonstrate minimum competence in mathematics by earning a passing score on the CSU Entry Level Mathematics (ELM) examination (except those who qualify for exemption as described below).

- (1) Score of 3 or higher on Advanced Placement Math (AB or BC);
- (2) Score of 530 or higher on the Mathematics section of the College Board Scholastic Aptitude Test (SAT-Math);
- (3) Score of 23 or higher on the ACT Mathematics section;
- (4) Score of 520 or higher on the College Board Math Achievement test, Level 1;
- (5) Score of 540 or higher on the College Board Math Achievement test, Level 2; or
- (6) Successful completion (grade C or higher) of a mathematics course certified for general education basic subjects quantitative reasoning requirement (intermediate algebra or higher at the time of transfer). *(this exemption applies to transfer students only.)*

PROCEDURES AND REGULATIONS

Registration (page 60)

All information remains the same except the application fee which is now \$35.

Academic Advisement (page 61)

Undergraduate students admitted as "undecided" majors must declare a major within three quarters after admission or upon completion of 90 units, whichever comes first. Undergraduate students who have completed 90 units or more at the time of admission must declare a major within their first quarter in residence. A student who has declared a major may change to another major but may not return to "undecided" status.



SCHEDULE OF FEES, 1983-84 (page 62)

CAUTION: Fees are subject to change without advance notice.

Legal residents of California are not charged tuition. The following reflects applicable fees and nonresident tuition for both the quarter and the semester systems.

All Students

Application Fee (*nonrefundable*), payable by check or money order at time application is made: \$30 (\$35 beginning with applications to summer quarter 1984)

Student Services Fee for all campuses except California College, Stanislaus:

Quarter	Academic Year ††
\$70	\$210

State University Fee for all campuses except California State College, Stanislaus:

Units

Undergraduate:

0 to 5.9	\$44	\$132
6.0 or more.....	\$134	\$402

Postbaccalaureate:

0 to 5.9	\$56	\$168
6.0 or more.....	\$146	\$438

Miscellaneous Fees:

Facilities	\$2	\$6 ††
Instructionally Related Activities.....	\$4	\$12 ††
** Associated Students	\$8	\$24 ††
University-Student Union.....	\$9	\$36

†† Does not include summer quarter; fees for summer quarter are identical to those during fall, winter, and spring quarters

** Refer to Appendix G. in 1983/84 catalog

Nonresident Tuition in addition to other fees charged all students (for all campuses):

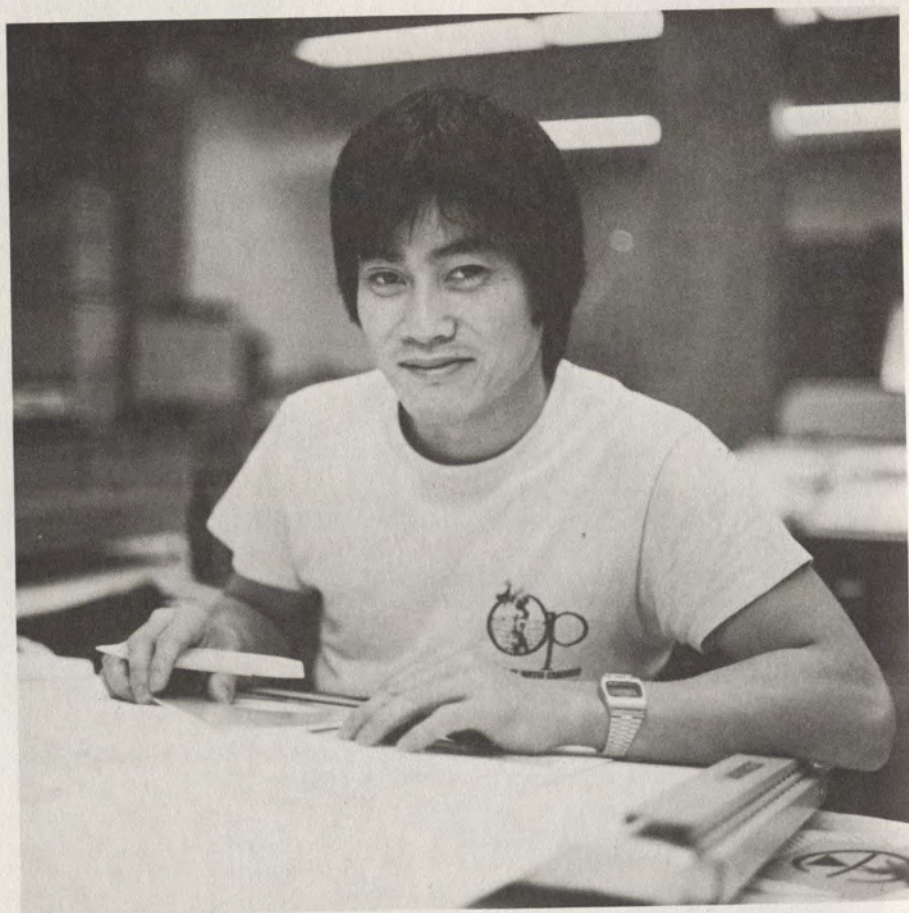
Charge per unit: \$72. The total fee paid per quarter will be determined by the number of units taken, including those in excess of fifteen.

Other Fees

Comprehensive examination (<i>course number 596 in major</i>)	\$10.00
Credential application	35.00
* Credential (transcript) evaluation and processing	25.00
Degree check application (graduation)	10.00
Diploma	6.00
Foreign Language Reading/Bilingual Proficiency Examination (<i>F L 901, 902</i>)	10.00
Late Registration (<i>nonrefundable</i>)	25.00
Parking decal (<i>per quarter</i>)	15.00
Automobile	3.75
Two-wheel vehicle.....	

Student Identification Card (<i>Photo-ID</i>).....	4.00
Thesis binding (<i>not a State fee</i>).....	10.00
Transcript of academic record (<i>single copy</i>).....	4.00
Each additional transcript (2-10) <i>requested at the same time</i>	2.00
Each additional transcript (<i>in excess of 10</i>) <i>requested at the same time</i>	1.00

* See *Schedule of Classes* for further information



Transcript of Academic Record (page 67)

(All information remains the same except the following.) Transcript request forms are available at Administration 128 and the Cashier's Office (Bungalow D). The cost of a single transcript is \$4. When more than one transcript is ordered at the same time, the first copy costs \$4, the second through tenth copies cost \$2 each, and any copies in excess of ten cost \$1 each.

Suffixes (page 68)

Add a new suffix:

MFA.....Courses for students enrolled in Master of Fine Arts degree program in Art only.

Course Abbreviations (pages 69-70)

Add a new abbreviation:

YAA.....Youth Agency Administration

Grading System (page 70)

Any course work for which nontraditional grades *CR/NC* are received is not included in units attempted for grade point average computations.

Definitions of Administrative Grading Symbols (page 71)

I Incomplete. An *Incomplete* grade is inappropriate for failing students. It is an interim grade designed for students who are passing but who through extenuating circumstances have not been able to complete all or part of the work of the last four weeks of the course. An *Incomplete* grade may be removed by completing the outstanding work within one calendar year following the end of the quarter in which it was assigned unless the time has been extended by the Petitions Subcommittee or the Graduate Studies Subcommittee, as appropriate, for contingencies such as military service and health problems of an incapacitating nature verified by a physician's statement. When the outstanding work has been completed during the time period allowed, the final grade will be reported to the Records Office. The time limitation prevails whether or not the student maintains continuous attendance. An *Incomplete* that is not removed during the time period allowed is charged as an *F* in grade point average computations.

Nontraditional Grading Option (page 72)

Any course work for which nontraditional grades *CR/NC* are received is not included in units attempted for grade point average computations.

Repeating Courses (page 73)

The new title of this section is *Academic Renewal: Repeating Courses*. All other information remains the same except the following. A repeated course form must be on file at the time the student enrolls in a course to be repeated, and no later than the *add* deadline for that quarter. Forms are available in Administration 128.

Academic Renewal (*page 73—change in title and content*)

Academic Renewal: Removal of Work From Bachelor's Degree Consideration

Under certain circumstances, up to two semesters or three quarters of previous *undergraduate* course work taken at any college may be disregarded from all considerations associated with requirements for the baccalaureate. The basic criteria are listed below:

- (1) Five years must have elapsed since completion of the most recent work to be disregarded;
- (2) Any previous removal of work from degree consideration must be included in applying the limits on work that may be disregarded;
- (3) Since completion of the work to be disregarded, students must have maintained the following grade point averages at Cal State L.A. at the time of petition: 3.0 for students with 22–44 quarter units completed; 2.5 with 45–66 units completed; and 2.0 with 67 or more units completed; and
- (4) Subject, but not unit, credit will be allowed for work completed satisfactorily during disregarded terms, and there is every evidence that the student would find it necessary to complete additional units and enroll for one or more quarters in order to qualify for the baccalaureate if the request was not approved.

The procedure is outlined in the *Schedule of Classes*.

SCHOLASTIC STATUS (*page 74*)

Grade Point Requirements

Grade Point Average (*addendum to existing information*)

Any course work for which nontraditional grades *CR/NC* are received is not included in units attempted for grade point average computations.

Student Conduct: Rights and Responsibilities (*page 76*)

Student Grievances

The Special Consultant to the President is now the University Ombudsman; his office is located in Admin. 127.

Special Consultant to the President

As indicated above, this person is now known as the University Ombudsman. His office is in the Advisement and Counseling Center, Admin. 127, phone 224-2657.

UNDERGRADUATE STUDY

Bachelor's Degrees (pages 80-82)

The following changes have occurred:

Bachelor of Arts Degrees

Afro-American Studies (in the Department of Pan-African Studies)

Options:

- Afro-American Studies
- African, Caribbean, and Afro/Latin American Studies
- Multiple Subject Credential

Sociology

A new option in *Human Development and Aging* has been added.

Bachelor of Science Degrees

Business Administration

A new option in *Retailing* has been added.

Criminal Justice

The options have been deleted.

Detailed information about degree requirements that have been modified within the past year appears elsewhere in this bulletin.

Programs with Waiver Status for Credentials (page 82)

For students interested in obtaining either the Single Subject or Multiple Subject credential, appropriate degree programs are listed in the 1983-84 catalog. Each program (or a specific option within it) has been approved for waiver of the subject area examination for the credential indicated. Interested students should consult advisers in both the specific department and the School of Education.

All Single Subject credential programs were under review by the Commission for Teacher Credentialing at the time of publication because of new requirements imposed by the commission. Students enrolled in currently-approved programs (listed on page 82 in the 1983-84 catalog) must complete all credential requirements and apply for the appropriate Single Subject credential by June 30, 1986. New Single Subject credential programs approved by the commission will be offered beginning fall 1984. Interested students should contact the appropriate academic departments for more information.

Multiple Subject credential programs are not affected by the changes described above.

Minors (page 85)

Although a minor is not required for a baccalaureate, minors are available in many fields for the purpose of strengthening students' preparation in areas related to the major field or to career choices. A minor may not be taken in the same subject as the major. A minor consists of a formal aggregate of courses totaling 18 or more quarter units, of which at least 9 must be upper division. The minor will be noted on the student's transcript if the individual program has been approved by the offering department and is completed at the same time as the work for the degree itself. Interested students should consult an adviser in the department offering the minor of their choice.

Preprofessional Study (page 86—new program)**American Humanics**

The American Humanics program at Cal State L.A. has been established to provide opportunities for students interested in *youth agency administration* careers to receive a specific, practical, educational experience related to their desired career goals. American Humanics is a national program available at selected college and university campuses in the continental United States. The intent of the program is to promote selective recruiting, career preparation, and placement for those students interested in youth agency administration careers. The American Humanics program office at Cal State L.A. is located at the entrance to Library North (phone 224-3671). Students interested in the program are advised to contact the program director. A certificate program in *Youth Agency Administration* is listed under *Certificate Programs* earlier in this bulletin. Youth Agency Administration (YAA) courses appear on page 62 in the *Undergraduate Programs* section.

The General Education Program

All information remains the same except the following:

UPPER DIVISION THEMES (page 93)**1. SCIENCE, ENVIRONMENT, AND PUBLIC POLICY**

"Science, Environment, and Public Policy" explores the scientific considerations that have an impact on the natural environment. It discusses the moral obligation of humanity toward the environment and societal attitude toward nature as revealed by the arts. The student also can explore the historical development of current attitudes toward the environment and the way in which the political process is brought to bear on environmental concerns. Courses included are:

Natural Sciences and Mathematics

BIOL/CHEM/PHYS 358, Science and Controversy (4)
ENGR/GEOG 358, Technology and Environment (4)

Social Sciences

HIST 458, History of the American Environment (4)
POLS 458, Environmental Policy and Politics (4)

Humanities

- ART/MUS 456, Nature, Environment, and the Arts (4)
 ENGL 358, Technology in Literature (4)

2. ANCIENTS AND MODERNS

“Ancients and Moderns” is an integrated approach to antiquity, its history, achievements, and legacy to modern Western and Islamic culture. Its purpose is to develop an understanding of our civilization, its achievements and problems. Courses included are:

Natural Sciences and Mathematics

- CHEM 380, Ancient and Modern Science (4)

Social Sciences

- HIST 311, Classical Civilization and the Modern World (4)

Humanities

- ART/ENGL 381, Legacy of Ancient Literature and Art (4)
 PHIL 321, Ancient Thought and its Modern Legacy (4)

3. THE CREATIVE EXPERIENCE IN HUMAN DEVELOPMENT

“The Creative Experience in Human Development” explores all aspects of the creativity of human beings. Students examine the thought processes employed in human inquiry through a study of the culture, history, and physical nature of the world in which they live. Courses included are:

Natural Sciences and Mathematics

- *BIOL xxx, Human Creativity in the Life Sciences (4)
 PHYS 363, The Creative Process in Physics (4)

Social Sciences

- ANTH 450, Culture and Innovation (4)
 SOC 442, Social Change (4)

Humanities

- ART/MUS 455, The Creative Genius in Art and Music (4)
 MUS 355, The Creative Aspects of Music (4)

4. THE NUCLEAR AGE

“The Nuclear Age” considers nuclear energy in its widest contexts. Its potential and the problems it creates for society and humanity are studied so that students are able to make judgments about policy and their own responsibilities in an age that faces the possibility of human extinction. Courses included are:

Natural Sciences and Mathematics

- PHYS 452, Atomic Nucleus—Center of Controversy (4)

Social Sciences

- HIST/POLS 459, Society and the Nuclear Genie (4)

Humanities

- PHIL 461, Philosophy and the Nuclear Age (4)

* For course number, consult the department offering the course.

5. PERSPECTIVES ON EVOLUTION

"Perspectives on Evolution" is intended to provide a foundation for understanding the theory of evolution as applied to the origins of the universe, the earth, raw materials for life, and life forms. The history of the idea of evolution from antiquity to the present and its impact on the culture of the 20th century will be explored. Courses included are:

Natural Sciences and Mathematics

BIOL/CHEM 350N, Evolution of Life (4)

GEOL/PHYS 350N, Evolution of Universe and Earth (4)

Social Sciences

ANTH 350, Evolution of Culture (4)

Humanities

ART/ENGL/HIST/PHIL 350, Evolution and the Modern World (4)

6. WORLD URBAN ENVIRONMENT: ECOLOGY AND MAJOR URBAN ISSUES

"World Urban Environment: Ecology and Major Urban Issues" contributes to an understanding of urbanization, its causes and consequences, and focuses on the city as a special kind of human habitat, with emphasis on the relationship of urban issues to the ecology of the city. Courses included are:

Natural Sciences and Mathematics

BIOL 361N, Ecology of the Urban Environment (4)

ENGR 352, Technological Aspects of Urban Environment (4)

Social Sciences

GEOG 476, Urban Areas (4)

SOC 430, Urban Sociology (4)

Humanities

ART 485, Ecology and Environment (4)

SPCH 489, Intercultural Communication (4)

7. THE AMERICAN LANDSCAPE

This theme provides a basis for viewing the American landscape as an evolving aggregate of natural human resources in interaction with the awareness that natural science, social science, and the humanities all contribute to an understanding of that landscape. Emphasis includes evaluation of America's natural environments and settlement features as seen by geologists, geographers, authors, and artists.

Natural Sciences and Mathematics

GEOL 420N, Geology of the National Parks (4)

Social Sciences

GEOG 421, United States (4)

Humanities

ART 341, The American Landscape in Art (4)

ENGL 476, The American Landscape in Literature (4)

8. INSTITUTIONAL RACISM

Institutional racism is a set of beliefs, attitudes, policies, and practices that permeate the major social, political, and economic institutions of the Western world. This theme helps students identify and explore the origins and present

systems of institutional racism and develop new strategies designed to lessen the impact of institutional racism in modern society.

Natural Sciences and Mathematics

BIOL 319N, Human Genetics (4)

BIOL 321, Institutional Racism: The Social Darwinian Rationale (4)

Social Sciences

EDUC 480, Institutional Racism and Schools (4)

SOC 462, Institutional Racism and Poverty (4)

Humanities

LAS 435, Race and Culture in Latin America (4)

*PAS xxx, Institutional Racism: Black Response in Literature (4)

9. DEVELOPMENT PROCESS IN THE THIRD WORLD

The Third World is characterized by severe social tension and staggering challenges. Immigration pressures are a continuing source of conflict and the competition for resources will become more acute. The natural science courses consider the physical limits and possibilities of Third World development; the social sciences develop an appreciation of human and economic processes affecting social and economic change in the Third World; and the humanities component examines the dynamic interplay among the arts, religion, and cultural values.

Natural Sciences and Mathematics

GEOG 433, Third World Environments and their Technological Development (4)

Social Sciences

ECON 460, Economic Growth of Underdeveloped Areas (4)

LAS/PAS 460, Dynamics of Social Change in the Third World (4)

Humanities

LAS/PAS 442, Cultural Impact of Third World Development (4)

PHIL 418, Religion, Traditional Values, and Modernization in the Third World (4)

10. GENDER IN HUMAN EXPERIENCE

The theme provides an integrated and disciplined inquiry into the status and implications of gender differences, exploring the meaning and significance of these basic factors in human experience. The natural sciences introduce students to the biological bases of sex differences: the social sciences treat gender in relation to cultural and social institutions; and the humanities explore the meaning of sex and gender, their cultural expressions, and prospects for rational evaluation of gender organization.

Natural Sciences and Mathematics

BIOL 488N/PSY 488, Gender Differences (4)

Social Sciences

ANTH 438, Women in Crosscultural Perspective (4)

SOC 441, Sociology of Sex Roles (4)

* For course number, consult the department offering the course.

Humanities

- *ENGL/SPCH xxx, Sex and Gender in Language and Literature (4)
 PHIL 412, Philosophy and Sex Roles (4)

11. HUMAN MATURITY AND AGING: PROCESSES AND PROBLEMS

The theme addresses major life issues that confront individuals in maturity and adulthood, and provides an integrated academic approach to the study of human aging through examination of the biological bases of aging, the social and psychological implications of maturity and aging, and the literary and philosophical concepts of age and aging.

Natural Sciences and Mathematics

- BIOL 484N, Biology of Human Aging (4)

Social Sciences

- PSY 462, Psychology of Human Development: Maturity and Aging (4)
 SOC 450, Sociology of Aging (4)

Humanities

- *ENGL/PHIL xxx, Themes of Adult Life in Philosophy and Literature (4)

12. HEALTH AND WELL-BEING

The theme provides a basis for understanding the physical, emotional, cultural, and philosophical aspects of self as these relate to personal well-being. The focus is on concerns of enduring importance to the human experience of all individuals as members of the national and world communities.

Natural Sciences and Mathematics

- H E 450, Nutrition and Well-Being (4)

Social Sciences

- ANTH 444, Medical Anthropology (4)

Humanities

- PHIL 491, Medical Ethics (4)
 ART/MUS/P E/T A 357, Creative Experiences for Well-Being (4)

Writing Skills Requirement (Upper Division Writing Requirement)
(page 97)

All CSU students subject to degree requirements listed in the 1977-78 and subsequent catalogs are required by Trustee policy to demonstrate competence in writing skills as a requirement for the bachelor's degree. The English Placement Test, described in the *Admissions* section of the 1983/84 catalog, has been implemented as a screening and placement device for entering lower division students.

In addition to the EPT, all Cal State L.A. students pursuing the baccalaureate who are subject to requirements of the 1984/85 or later catalog are required to pass an upper division writing proficiency examination prior to completion of 135 quarter units. English 190 is prerequisite to that examination. Students who have not passed the writing proficiency examination will not be permitted to register for courses beyond 135 units. Transfer students who have completed 135 units or more upon entrance must pass the examination during their first quarter in residence at Cal

* For course number, consult the department offering the course.

State L.A. Such transfer students who do not meet this requirement are subject to administrative probation or disqualification. Students who have satisfied the upper division writing requirement at another institution with an implied level of achievement at least equivalent to that at this campus shall be considered to have met the Cal State L.A. requirement.

Successful performance on the examination is evidence of compliance with the upper division writing requirement. However, departments may require of their majors additional discipline-based course work in writing. See your faculty adviser for requirements in your major department.

The *Schedule of Classes* contains information about the examination fee, retake charge, and other test details.

The writing skills requirement for graduate degrees is described under Procedures and Regulations in the *Graduate Study* section of this supplement.

Graduation with Honors (page 100)

Baccalaureate graduates of Cal State L.A. who maintain an outstanding scholarship record while earning their degree are accorded special recognition upon graduation. These honors, designated on the diploma and the permanent academic record card, are granted to the top five percent of students graduating in each school, calculated from grade point averages achieved at Cal State L.A. Eligibility is limited to students who have earned at least 72 quarter units at Cal State L.A.

Honors at graduation are determined according to the criteria listed below.

<i>Cum laude</i> (honor)	minimum 3.4 grade point average and top 5% within school
<i>Magna cum laude</i> (high honor)	minimum 3.6 grade point average and top 3% within school
<i>Summa cum laude</i> (highest honor)	minimum 3.8 grade point average and top 1% within school

National Honor Societies (page 101—addendum)

Delta Pi Epsilon, Beta Pi Chapter.....Business Education



UNDERGRADUATE PROGRAMS

This section contains information about new baccalaureate level programs and courses, as well as those that have been modified or deleted since the 1983/84 catalog was issued. Information about graduate level programs appears later in this supplement.

ANTHROPOLOGY

MODIFIED PROGRAM:

Bachelor of Arts Degree

Option for Single Subject Credential in Social Science
(page 108)

All Single Subject credential programs were under review by the *Commission for Teacher Credentialing* at the time of publication of this bulletin because of new requirements imposed by the commission. Students enrolled in currently-approved programs must complete all credential requirements and apply for the appropriate Single Subject credential by June 30, 1986. This option, which was designed for students pursuing a Single Subject credential with their bachelor's degree objective, is no longer available in its present form. Students who wish further information about pending plans for a new Single Subject option in this major should contact the department office.

Courses in Anthropology

(ANTH)

(page 109)

NEW COURSES:

350 Evolution of Culture (4)

Prerequisite: General education social science requirement. The interrelationships of human biological and cultural evolution, with an emphasis on changing adaptive patterns and sociocultural organization.

450 Culture and Innovation (4)

Prerequisite: General education social science requirement. The creative experience and its cultural parameters; effect of culture in structuring the innovative process; emphasis on forces that initiate, direct, and impede the course of creative effort.

MODIFIED COURSE:

438 Sex Roles in Crosscultural Perspective (4)

Evolutionary and comparative approach to the study of roles of men and women in societies past and present.

ART

MODIFIED PROGRAM:

Bachelor of Arts Degree

Option V: The Credential Program
(page 116)

All Single Subject credential programs were under review by the *Commission for Teacher Credentialing* at the time of publication of this bulletin because of new requirements imposed by the commission. Students enrolled in currently-approved programs must complete all credential requirements and apply for the appropriate Single Subject credential by June 30, 1986. This option, which was designed for students pursuing a Single Subject credential with their bachelor's degree objective, is no longer available in its present form. Students who wish further information about pending plans for a new Single Subject option in this major should contact the department office.

Courses in Art (ART) (page 116)

NEW COURSES:

350 Evolution and the Modern World (4)

(also listed as ENGL 350, HIST 350, and PHIL 350)

Prerequisite: General education humanities requirement. History of the idea of evolution

from antiquity to the present and its impact on the culture of the twentieth century.

357 Creative Experiences for Well-Being (4)

(also listed as MUS 357, P E 357, and T A 357)

Prerequisites: H + S 150 and one general education humanities (arts—C2) course. Exploration of creative experiences in the arts for promotion of mental, emotional, and physical well-being.

380 Computers in Art and Design (4)

Computers in art and design; descriptions, functions, visual problem solving, programming, computer graphics, applications in visual imagery and design.

434 Watercolor Painting (3)

Prerequisite: ART 155 or 234. Techniques of watercolor painting; advanced studies in pictorial composition through landscape, figure, still life, and abstract painting. May be repeated to maximum of 9 units.

MODIFIED COURSES:

152 Introduction to Ceramics (new title)

153 Survey and Studio: Introduction to Design (new title)

417 Advanced Ceramic Processes (3)

Prerequisite: ART 412. Advanced ceramic technology, clay, glazes; practical applications to all clay forms. May be repeated to maximum of 9 units.

BIOLOGY

MODIFIED PROGRAM:

Bachelor of Science Degree in Biology (page 125)

Departmental Honors Program

The Department of Biology offers an *Honors Program* for upper division students who have completed 90 quarter units, including 40 units in the major, with a minimum 3.0 grade point average both overall and in the major. Students shall have completed 24

units of the major in residence at Cal State L.A. To graduate with honors in biology, students must also complete two quarters of calculus.

The *Honors Program* introduces superior students to intensive research experience in biology. Honors students are assisted by an Honors adviser and two other committee members. Enrollment in BIOL 396, Honors Study in Biology, for 5 units is required, and enrollment in BIOL 499, Undergraduate Directed Study, for 1–4 units is optional. A prospectus, a written thesis, and a final oral examination about the thesis, administered by the committee, are required parts of the program. The approved thesis will satisfy the *Upper Division Writing Requirement (UDWR)*. Diplomas and transcripts of *Honors Program* graduates are designated: "Graduated with Departmental Honors in Biology."

Upper Division Writing Requirement (UDWR) (page 126)

To fulfill the Upper Division Writing Requirement, students must complete BIOL 357 or the Biology Honors Program, including BIOL 396.

The Credential Program (page 127)

All Single Subject credential programs were under review by the *Commission for Teacher Credentialing* at the time of publication of this bulletin because of new requirements imposed by the commission. Students enrolled in currently-approved programs must complete all credential requirements and apply for the appropriate Single Subject credential by June 30, 1986. This option, which was designed for students pursuing a Single Subject credential with their bachelor's degree objective, is no longer available in its present form. Students who wish further information about pending plans for a new Single Subject option in this major should contact the department office.

Courses in Biology (BIOL)

(page 127)

NEW COURSES:

321 Institutional Racism: The Social Darwinian Rationale (4)

Prerequisite: BIOL 155, 156, or 165. Scientific criticism of Social Darwinian precepts of the racial basis of human potential. "Scientific" rationalization of discriminatory social policy. *No credit toward Biology major.*

357 Writing for Biologists (4)

Prerequisites: ENGL 190 and upper division standing in a biological science major. Introduction to writing skills and techniques necessary for presentation of biological information. Intensive practice in writing abstracts, reports, reviews, and other forms of scientific papers.

358 Science and Controversy (4)

(also listed as CHEM 358 and PHYS 358)

Prerequisite: General education natural science requirement. Scientific background of issues that affect public welfare, such as genetic technology, chemical pesticides, and energy production and utilization. *No credit toward Biology, Chemistry, or Physics major.*

488N Gender Differences (4)

(also listed as PSY 488)

Prerequisites: BIOL 155. Biological and psychological differences between the sexes. Topics include genetic sexual determination, sexual differentiation, role of hormones in physiology and behavior, experimental methodology, psychological differences in ability and personality. *No credit toward Biology major.*

MODIFIED COURSES:

200A. Human Anatomy and Physiology I (5)

Prerequisite or corequisite: CHEM 151. Structure and function of the cell and tissue; anatomy and physiology of the skeletal, muscular, digestive, and urinary systems. Lecture 3 hours, laboratory 6 hours. *No credit toward Biology major.*

200B Human Anatomy and Physiology II (5)

Prerequisite: BIOL 200A. Anatomy and physiology of the cardiovascular, respiratory, nervous, endocrine, and reproductive systems. Lecture 3 hours, laboratory 6 hours. *No credit toward Biology major.*

319N Human Genetics (4)

Prerequisite: BIOL 155. Basic principles of genetics and their applicability to human heredity; emphasis on race; IQ; diseases; counseling; social, ethical, and legal implications of genetic research; historical misuse of genetic information. *No credit toward Biology major or minor.*

396 Honors Thesis (1-5)

Prerequisites: Upper division standing, 40 units in the major, ENGL 190, and admission to Biology Honors Program. Independent research in Biology; regular consultations with research adviser; written thesis required. Student must complete 5 units before submitting thesis and receiving grade.

418 Evolution (title change)

DELETED COURSES:

473, 486N, and 487N.



SCHOOL OF BUSINESS AND ECONOMICS

MODIFIED PROGRAMS:

Bachelor of Science Degree in Business Administration (page 134)

Requirements for the Major (page 135)

A new option in *Retailing* has been added, bringing the total number of available options to sixteen.

Option 10: Management (page 137)

(B) OPERATIONS

Required courses (16 units):

MGMT 460, 461, 462, 479

Electives (8 units):

Select two adviser-approved courses from 400-level MGMT courses and FIN 434.

Option 11: Marketing (page 137)

Electives (12 units):

Select three marketing courses with adviser approval.

NEW OPTION:

Option in Retailing (page 138)

*ADVISEMENT: Department of Marketing,
ST F917, Ph. 224-2811.*

This option is designed to prepare students for management level positions in a wide range of retail businesses, or to become successful proprietors of their own retail concern.

Required courses (24 units):

MKTG 342, 344, 349, 357, 449, 460

(No further changes in this program)

Bachelor of Science Degree in Business Education

The Credential Program (page 140)

All Single Subject credential programs were under review by the *Commission for Teacher Credentialing* at the time of publication of this bulletin because of new requirements imposed by the commission. Students en-

rolled in currently-approved programs must complete all credential requirements and apply for the appropriate Single Subject credential by June 30, 1986. This option, which was designed for students pursuing a Single Subject credential with their bachelor's degree objective, is no longer available in its present form. Students who wish further information about pending plans for a new Single Subject option in this major should contact the department office.

Courses in Accounting (ACCT)

(page 142)

MODIFIED COURSES:

321, 322, 427: Change prerequisite to ACCT 320B.

Courses in Business Information Systems (BIS)

(page 145)

NEW COURSES:

450 Advanced Data Base Design (4)

Prerequisites: BIS 383, 442, and 482. Planning and development of integrated management information systems. Data base design, data management systems, operating systems, standards and documentation, data security, performance evaluations; monitoring, hardware, and economics of integrated systems.

451 Information Management Systems Concepts and Facilities (4)

Prerequisites: BIS 383 and 488. Study of Information Management System (IMS) including concepts and terminology, control blocks, data language/one, on-line, batch, BMP regions, message processing, and transaction scheduling.

MODIFIED COURSES:

227, 228, 283, 335: Change prerequisites to *BIS 294* or *C S 290*.

294 Business Computer Systems (4)

Computer system fundamentals; flowcharting; programming in BASIC; use of batch and transaction systems for business data processing applications.

316: Change prerequisite to *BIS 283*.

382: Change prerequisites to *ACCT 200AB* and *BIS 294*.

408: Change prerequisites to *BIS 294*.

442: Change prerequisites to *BIS 283* and *382*.

482 Systems Analysis Methods (4)

Prerequisite: *BIS 283*. Overview of systems development life cycle; emphasis on planning systems analysis and design activities; techniques and tools of system documentation and logical system specification; system development projects.

484 Distributed Processing (4)

Prerequisite: *BIS 283*. Introduction to distributed processing systems, including terminals, processors, data communication systems, and shared resource systems; system software and compatibility considerations; human engineering and productivity improvement considerations.

486: Change prerequisites to *BIS 382, 482, and MGMT 307*.

487 Decision Support Systems (4)

Prerequisites: *BIS 294*; *FIN 303*; *ECON 391* or *MGMT 306*. Computer-based decision analysis techniques and software packages; use of financial analysis planning systems, optimization, and simulation techniques.

488 Structured Systems Analysis and Design (new title)**Courses in Finance (FIN)**

(page 150)

MODIFIED COURSES:**339 Real Estate Practice (4)**

Prerequisite: *FIN 338*. Analysis of real estate contracts, agency and brokerage relationships, physical components of real estate, private ownership interests, documents of transfer, escrows, title insurance, recording, and professional licensing.

438 Real Estate Valuation (4)

Prerequisite: *FIN 338*. Valuation of real property; economic analysis of trends and factors influencing real estate ownership, development, and use; current appraisal theory.

Courses in Marketing (MKTG)

(page 154)

NEW COURSES:**357 Fiscal Aspects of Retailing (4)**

Prerequisite: *MKTG 304*. The fiscal aspects involved in operating a retail business; capital acquisition, expense budgeting, expense control, retail inventory valuation, credit management, and performance measurement.

449 Retail Planning and Policy Making (4)

Prerequisite: *MKTG 304*. Retail strategic environmental/competitive appraisals; retail goal settings; competitive positioning and market share strategy; retail sales forecasting; and techniques of constructing, communicating, and implementing retail plans.

460 Retail Store Management and Operations (4)

Prerequisite: *MKTG 304*. Physical distribution, customer service, store housekeeping, and loss prevention functions of retailers. Organizational structure, staffing, and administration of individual store outlets of multi-unit retailers.

MODIFIED COURSES:

344: Change course description.

Structure of retailing industry; retailing trends; retail store organization; understanding retail consumers; store location, design, and layout; basic fundamentals of operating

a retail business; retail controls and evaluation.

446: Change title to *Marketing Research* and prerequisites to *MKTG 304* and *ECON 209*.



CHEMISTRY

The name of the department has been changed to *Department of Chemistry and Biochemistry*.

Courses in Chemistry (CHEM) (page 159)

NEW COURSES:

- 358 Science and Controversy (4)**
(also listed as BIOL 358 and
PHYS 358)

Prerequisite: General education natural science requirement. Scientific background of issues that affect public welfare, such as genetic technology, chemical pesticides, and energy production and utilization. *No credit toward Biology, Chemistry, or Physics major.*

- 362 Biomedical Microanalysis (4)**

Prerequisite: CHEM 123 or 201. Fundamentals of chemical microanalysis and instrumentation for analysis of substances of biomedical importance. *Not available as elective for B.S. degree in Chemistry.* Lecture 3 hours, recitation 1 hour.

- 380 Ancient and Modern Science (4)**

Prerequisite: General Education natural science requirement. Systematic analysis of ancient scientific thought as science and its relationship to modern science.

- 411 Fundamentals of Physical Chemistry (4)**

Prerequisites: CHEM 123, MATH 208, and PHYS 123 or 203. Survey of physical chemistry including thermodynamics, kinetics, quantum chemistry, and spectroscopy. *No credit toward B.S. degree in Chemistry or Biochemistry; no credit if taken after CHEM 401.*

- 435 Introduction to Biochemistry (4)**

Prerequisite: CHEM 208B or 301C. Introduction to principles of biochemistry. *No credit if taken after CHEM 431A.*

- 440 Industrial Chemistry (4)**

Prerequisites: CHEM 301C and 402. Survey of major industrial chemical processes.

CHICANO STUDIES

MODIFIED PROGRAM:

*Bachelor of Arts Degree in
Mexican American Studies*

Option II: Single Subject Credential in Social Science (pages 164 and 165)

All Single Subject credential programs were under review by the *Commission for Teacher Credentialing* at the time of publication of this bulletin because of new requirements imposed by the commission. Students enrolled in currently-approved programs must complete all credential requirements and apply for the appropriate Single Subject credential by June 30, 1986. This option, which was designed for students pursuing a Single Subject credential with their bachelor's degree objective, is no longer available in its present form. Students who wish further information about pending plans for a new Single Subject option in this major should contact the department office.

CHILD DEVELOPMENT

MODIFIED PROGRAM:

*Bachelor of Arts Degree in Child
Development (page 168)*

Requirements for the Major

The core for this major now includes 58-59 units as indicated below.

Core Requirements

Lower Division

Required Courses (23 units):

H E 220, 221, 250

PSY 150, 170

gree objective, is no longer available in its present form. Students who wish further information about pending plans for a new Single Subject option in this major should contact the department office.

Courses in Broadcasting (BCST)

(page 180)

499: Add the following statement. *May be repeated to maximum of 8 units.*

Courses in Speech Communication (SPCH)

(page 184)

277: Add the following statement. *Graded CR/NC only.*

CRIMINAL JUSTICE

MODIFIED PROGRAM:

Bachelor of Science Degree in Criminal Justice (page 189)

Limitations on Transfer Credit

Students intending to transfer to Cal State L.A. from a community college to continue work toward a Bachelor of Science degree in Criminal Justice are advised to complete general education requirements and the *six* lower division core courses equivalent to those in the Cal State L.A. curriculum prior to transferring.

Social Science Prerequisites

All social science prerequisites have been deleted from the program.

Requirements for the Major

The major now requires completion of a minimum of 88 units, 24 lower division and 64 upper division.

Lower Division

Required in Criminal Justice (24 units):

Delete CRIM 235 from *Optional Electives* and add it to required courses.

Upper Division

Required in Criminal Justice (32 units):

CRIM 301A, * 301B, 405, 408, 428, 439, 447, 461

* Satisfies the UDWR for this major.

Electives in Criminal Justice (12 units):

Students plan, with major adviser's approval, 12 units of electives in criminal justice which may be chosen to further diversify their program, or grouped in a career-interest selection, as listed below.

A. Justice Systems Administration.

B. Investigative Sciences.

C. Legal Procedures.

D. Security Systems.

Electives in Related Fields (20 units):

With major adviser approval, students select 20 units of electives in related fields, or a certificate program (minimum 20 units) in a related field, or a minor in a related field (minimum 20 units), from the following disciplines:

ANTH	ENGL	MATH
BEOA	FIN	NURS
BIS	H+S	PAS
CH S	HIST	P E
C S	I S	POLS
ECON	LAS	RECR
EDFN	MGMT	SOC

Courses in Criminal Justice (CRIM)

(page 191)

NEW COURSES:

405 Ethics and Professional Responsibility (4)

Nature and scope of misconduct, special risks and responsibilities, legal and institutional controls, concepts of professionalism, codes of ethics, conflict of interest, and problems in exercise of discretion.

406 Comparative Justice Systems (4)

Exploration and comparison of foreign criminal justice systems, foreign innovations in crime prevention, corrections, investigation, administration, and training.

SCHOOL OF EDUCATION

Admission to Credential Programs (page 194)

Add the following statement to this section.

Effective February 1, 1983, the Commission for Teacher Credentialing shall not initially issue any credential, permit, or certification, or renewal of an emergency credential, to any person to serve in the public schools unless the person has demonstrated proficiency in basic reading, writing, and mathematics skills in the English language. The Superintendent of Public Instruction has adopted the California Basic Educational Skills Test (CBEST) as the state assessment instrument to measure teacher proficiency in the basic skills. Further information may be obtained from the School of Education admissions office, KH D2078.

Directed Teaching (page 195)

(9) Complete the course prerequisites for EDEL 403 and 404 or 465; EDSE 442ABC or 489 or EDSP 407, as listed in the course descriptions.

Courses in Education (EDUC) (page 197)

NEW COURSE:

480 Institutional Racism and Schools (4)

An examination of institutional racism, and its perpetuation in United States' schools, while developing a definition of this concept and specific strategies for the elimination or reduction of institutional racism.

MODIFIED COURSE:

421: Change course description as follows.
Principles and practice of educational written communication.

AUDIOLOGY

Course in Audiology (AUD) (page 200)

MODIFIED COURSES:

431A Laboratory: Sign Language, Beginning (1)

Intensive sign language practice in the habilitation of prelingually hearing impaired.

431B Laboratory: Sign Language, Advanced (1)

Advanced practice in the habilitation of prelingually hearing impaired.

COUNSELOR EDUCATION

Courses in Counselor Education (EDCE) (page 203)

NEW COURSES:

428AB Principles of Measurement and Research in Counseling (4-4)

Prerequisite: EDFN 452 or PSY 302. Principles, procedures, and ethical considerations underlying data collection for purposes of client assessment and research in counseling, educational, rehabilitation, and employment settings.

447 Career Education and Guidance in Schools (4)

Career education and guidance covering elementary through high school years. Use of activities, theory, and information in the construction of career education programs.

448 Career Counseling for Adults (4)

Vocational counseling of college students, rehabilitation clients, persons making mid-career changes, and returning homemakers; emphasis on career development theory, occupational information, job analysis, and job placement.

ELEMENTARY EDUCATION

Requirements for Preliminary Credential (page 207)

Add the following statement after the sentence in (1).

The Ryan Law requires completion of an approved *multiple subject* major (diversified major) or a satisfactory score on a state-required examination. The five approved diversified majors offered at Cal State L.A. are: Afro-American Studies, American Studies, Child Development, Liberal Studies and Mexican-American Studies.

Courses in Elementary Education (EDEL) (page 209)

NEW COURSES:

480 Teaching Microcomputing in the Elementary School: LOGO (4)

Theory, methods, and techniques for teaching the programming Language LOGO (graphic and text modes) in the elementary school through hands-on experience in a microcomputer laboratory.

481 Teaching Microcomputing in the Elementary School: BASIC (4)

Theory, methods, and techniques for teaching the programming language BASIC in the elementary school through hands-on experience in a microcomputer laboratory.

MODIFIED COURSE:

431 Teaching Mathematics in Middle Schools (4)

Examination of mathematics content and methodology appropriate for students in middle schools; emphasis on problems specific to urban areas and on discovery-activity techniques for intermediate grade children.

LIBRARY SCIENCE

Courses in Library Science (LIBR) (page 213)

MODIFIED COURSES:

The following course titles have been changed as indicated below.

- 400 Instructional Materials: Selection and Acquisition
- 401 School Library Media Centers
- 402 Instructional Materials: Cataloging and Classification
- 406 Information Sources: General
- 408 Information Sources: Specialized
- 451 School Library Media Services

SECONDARY EDUCATION

Secondary Teaching Credential (page 215)

Add the following statement to this section.

Effective February 1, 1983, the Commission for Teacher Preparation and Licensing (CTPL) shall not initially issue any credential, permit, or certification, or renewal of an emergency credential, to any person to serve in the public schools unless the person has demonstrated proficiency in basic reading, writing, and mathematics skills in the English language. The Superintendent of Public Instruction has adopted the California Basic Educational Skills Test (CBEST) as the state assessment instrument to measure teacher proficiency in the basic skills. Further information may be obtained from the department office or the School of Education admissions office, KH D2078.

All Single Subject credential programs were under review by the Commission for Teacher Credentialing at the time of publication because of new requirements imposed by the commission. Students enrolled in currently-approved programs (listed on page 82

in the 1983-84 catalog) must complete all credential requirements and apply for the appropriate Single Subject credential by June 30, 1986. New Single Subject credential programs approved by the commission will be offered beginning fall 1984. Interested students should contact the appropriate academic departments for more information.

Requirements for Clear Credential

(2) in this section now reads:

Satisfy requirements for admission to fifth year credential program.

Courses in Secondary Education (EDSE) (page 215)

MODIFIED COURSES:

401 Instructional Strategies: Metropolitan Secondary Teaching (6) (formerly 401AB)

Prerequisites or corequisites: EDFN 413 and EDSE 450A. Basic skills required for structured observation and accomplishment of developmental teaching tasks; teaching techniques, curriculum design principles, and evaluation practices in metropolitan secondary schools.

421: Change prerequisite to: *EDSE 401*. Change course in final sentence of description to *EDSE 442C*.

442ABC Directed Teaching in Metropolitan Secondary Schools (2-11-11) (formerly 442ABCD)

442A Prerequisites: See Directed Teaching requirements. Corequisite: EDSE 401. Ten hours per week of classroom experience in assigned school.

442BC Prerequisites: EDSE 421 and 442A. Fifteen hours directed teaching and one seminar per week for each school assignment. Graded *CR/NC* only.

472: Change title to *Principles of Adult and Occupational Education*.

473X,Y: Change title to *Supervised Field Experiences in Adult and Occupational Education*.

476: Change title to *Curriculum Development in Adult and Occupational Education*.

477: Change Title to *Counseling in Adult and Occupational Education*.

489: Change units to 11.

SPECIAL EDUCATION

Courses in Special Education (EDSP) (page 220)

MODIFIED COURSES:

401M: Change number to 410, and title to *Education of Exceptional Individuals in Mainstream Settings*.

466: Change title to *Communication Skills for Visually Impaired* and units to 4.

467: Change title to *Methods for the Visually Impaired* and units to 4.

468: Change course number to 568. This course may be found in the *Graduate Programs* section of the supplement.



SCHOOL OF ENGINEERING

MODIFIED PROGRAM:

Bachelor of Science Degree in Engineering (page 225)

The major now consists of 150 units, including 83 in a basic core and 67 in an option and technical electives.

Civil Engineering Option (page 226)

Electives now include 24 units. ENGR 475 has been added to the list of lecture courses.

Electrical Engineering Option (page 226)

Electives now include 35 units, of which 24 must be in *electrical engineering*. The *areas of specialization* remain unchanged. *Additional electives* are now part of *electives in electrical engineering*; up to 8 of these 24 units may be selected from the fields listed under *additional electives*.

Mechanical Engineering Option (page 228)

ENGR 319 and 397 have been added to the core of required option courses, bringing the total units in the core to 39.

Special Option (page 228)

Forty-eight units are now required in electives.

Courses in Engineering (ENGR) (page 229)

NEW COURSES:

319 Computer Aided Mechanical Engineering Laboratory (2)

Prerequisites: C S 290 and upper division standing in Mechanical Engineering major.

Use of microcomputers, minicomputers, mainframe computers in mechanical engineering laboratories and projects; programming for interactive computer graphics, engineering design, simulation, word processing; intensive practice in hardware/software usage. Laboratory 6 hours.

358 Technology and Environment (4)

(also listed as GEOG 358)

Prerequisite: General education natural science requirement. Problems of resource scarcity and environmental impact of technology, past, present, and future; relationships leading to an understanding of an increasingly complex global system.

397 Introduction to Project Design in Mechanical Engineering (2)

Prerequisites: Lower division ENGR core, ENGR 300 and 319, and ENGL 306. Introduction to the planning and execution of engineering design projects; ethical and economic considerations; communications and reporting.

475 Advanced Surveying (4)

Prerequisite: ENGR 202. Advanced surveying, including triangulation, practical astronomy, and land and construction surveying. Lecture 2 hours, laboratory 6 hours.

MODIFIED COURSES:

360: Change prerequisite to: *Grade of C or higher in ENGR 205.*

387: Change prerequisite to: *Grade of C or higher in ENGR 303.*



ENGLISH

MODIFIED PROGRAM:

Bachelor of Arts Degree in English

Option for Single Subject Credential in English

(pages 237 and 238)

All Single Subject credential programs were under review by the *Commission for Teacher Credentialing* at the time of publication of this bulletin because of new requirements imposed by the commission. Students enrolled in currently-approved programs must complete all credential requirements and apply for the appropriate Single Subject credential by June 30, 1986. This option, which was designed for students pursuing a Single Subject credential with their bachelor's degree objective, is no longer available in its present form. Students who wish further information about pending plans for a new Single Subject option in this major should contact the department office.

Courses in English (ENGL)

(page 238)

NEW COURSES:

350 Evolution and the Modern World (4)

(also listed as ART 350, HIST 350, and PHIL 350)

Prerequisite: General education humanities requirement. History of the idea of evolution from antiquity to the present and its impact on the culture of the 20th century.

358 Technology in Literature (4)

Prerequisite: ENGL 221, 222, or 250. The literary response to the impact of technology on society, nature, individual life, and art from the 18th century to the present. Supervised practice in writing.

476 The American Landscape in Literature (4)

Prerequisite: ENGL 221, 222, or 250. Study of the literary response to the American landscape from the time of the early explorers to the present.

FOREIGN LANGUAGES AND LITERATURES

MODIFIED PROGRAMS:

Credential Programs (page 244)

All Single Subject credential programs were under review by the *Commission for Teacher Credentialing* at the time of publication of this bulletin because of new requirements imposed by the commission. Students enrolled in currently-approved programs must complete all credential requirements and apply for the appropriate Single Subject credential by June 30, 1986. The Single Subject credential options in the Bachelor of Arts degrees in French (1983/84 catalog, page 247) and Spanish (page 253), and the Bachelor of Arts degree in Japanese (page 250) are no longer available to students pursuing a Single Subject credential in their present form. Students who wish further information about pending plans for new Single Subject programs in these majors should contact the department office.

Courses in Foreign Language (F L) (page 245)

496: Change units to 1-4.

CHINESE (page 246)

Courses in Chinese (CHIN)

MODIFIED COURSE:

310 Chinese Civilization (4)

Prerequisite: CHIN 200B. Major cultural and social trends of China from beginning to present.

JAPANESE (page 250)**MODIFIED PROGRAM:****Minor in Japanese**

Prerequisite: JAPN 100ABC or 130 (may be satisfied by appropriate high school preparation or by examination). The minor requires completion of 36 units in Japanese as listed below.

Lower Division*Required:*

JAPN 200ABC (4-4-4)

Upper Division*Required:*

JAPN 300ABC (4-4-4)

Options (8 units): (select one)

Literature: JAPN 408, 410

Civilization: JAPN 310, 311

Electives (4 units):

Select from: 400A, 400B, 454L,P, 460

SPANISH (page 252)**MODIFIED PROGRAMS:****Bachelor of Arts Degree in Spanish**

Options I and II: Add 350, 351, and 475 to second list of electives.

Minor in Spanish

Add 351 to list of electives.

GEOGRAPHY AND URBAN STUDIES**MODIFIED PROGRAMS:****Bachelor of Arts Degree in Geography** (page 257)

The *General Option* now requires 77-79 units, 16-18 lower division and 61 upper division, and the *Option for Single Subject Credential in Social Science* now requires 82-85 units, 12 lower division and 70-73 upper division.

General Option**Required in Lower Division Courses**

GEOG 150, 160, 210

Select one or two from following: BIS/ SOCS 280, BIS 294, C S 190, ECON 209, SOC 210AB

Required in Upper Division Courses

GEOG *357, 405, 453, 460, 465

* Satisfies UDWR for this option.

Regional Geography (select 8 units)

GEOG 370, 421, 423, 424, 425, 427, 428, 430, 431, 432

Systematic Human Geography (select 12 units)

GEOG 441, 442, 467, 475, 476, 481

Systematic Physical Geography (select 8 units)

GEOG 402, 410, 415

Electives in Geography (12 units)

Select additional courses from above groups or from the following:

GEOG 358, 433, 446, 466, 471, 477, 496, 497, 499, UNIV 398

Option for Single Subject Credential in Social Science

All Single Subject credential programs were under review by the *Commission for Teacher Credentialing* at the time of publication of this bulletin because of new requirements imposed by the commission. Students enrolled in currently-approved programs must complete all credential requirements and apply for the appropriate Single Subject credential by June 30, 1986. This option, which was designed for students pursuing a Single Subject credential with their bachelor's degree objective, is no longer available in its present form. Students who wish further information about pending plans for a new Single Subject option in this major should contact the department office.



Required in Lower Division Courses

GEOG 150, 160, 210

Required in Upper Division Courses

GEOG *357, 370, 415, 431, 460

* Satisfies UDWR for this option.

Electives in Geography

Select one course from each of following three groups:

Regional Geography (4 units)

GEOG 421, 423, 424, 425, 427, 428, 430, 432

Systematic Human Geography (4 units)

GEOG 441, 442, 467, 475, 476, 481

Systematic Physical Geography (4 units)

GEOG 402, 410

Additional electives in Geography (13-16 units)

Select additional courses from above groups or from following:

GEOG 358, 405, 433, 446, 453, 465, 471, 477, 496, 497, 499, UNIV 398

Required in related fields (24 units):

Same as listed in 1983/84 catalog *except* substitute SOC 202 for SOC 250.

Certificate Program in Urban Land Use and Property Analysis (page 259)**Courses in Geography (13-17 units):**

Students may include GEOG 460 or 477 in lieu of GEOG 439 which has been deleted from the curriculum.

(No other changes in this program.)

Bachelor of Arts Degree in Urban Studies (page 259)**Requirements for the Major**

The major now requires 74-81 units, 46-49 in specified courses and the remainder in electives. Urban Studies 101 has been added as a lower division core requirement. GEOG 432, 442, 446, 467, and 477 have been added to elective choices.

Minor in Urban Studies (page 260)

The minor now requires completion of 38-41 units. URBS 101 has been added to the lower division required courses.

Courses in Geography (GEOG) (page 260)**NEW COURSES:****358 Technology and Environment (4) (also listed as ENGR 358)**

Prerequisite: General education natural science requirement. Problems of resource scarcity and environmental impact of technology, past, present, and future; relationships leading to an understanding of an increasingly complex global system.

433 Third World Environments and Their Technological Developments (4)

Prerequisite: General education natural science requirement. The physical environments of Third World countries of the Humid Tropics, Wet and Dry Tropics, Hot and Dry Realms, and Highland Tropics and their associated problems of technological development.

MODIFIED COURSE:**421 United States (4)**

Identification, interpretation, and synthesis of regional phenomena within the United States characterizing its physical and cultural landscape.

DELETED COURSES:

301, 420, 439, and 495.

GEOLOGY**Courses in Geology (GEOL) (page 266)****MODIFIED COURSES:****420:** Change to 420N.**470:** Change prerequisites to *GEOL 202*.

HEALTH AND SAFETY STUDIES

MODIFIED PROGRAM:

Bachelor of Arts Degree (page 271)

Change required upper division English course (for UDWR) to *ENGL 306* or *406*.

NEW PROGRAM:

Certificate Program: Occupational Safety and Health Professional. (This program is included in the list of new certificate programs that appears near the front of this supplement.)

HISTORY

MODIFIED PROGRAM:

Bachelor of Arts Degree in History

Option for Single Subject Credential in Social Science (pages 278 and 279)

All Single Subject credential programs were under review by the *Commission for Teacher Credentialing* at the time of publication of this bulletin because of new requirements imposed by the commission. Students enrolled in currently-approved programs must complete all credential requirements and apply for the appropriate Single Subject credential by June 30, 1986. This option, which was designed for students pursuing a Single Subject credential with their bachelor's degree objective, is no longer available in its present form. Students who wish further information about pending plans for a new Single Subject option in this major should contact the department office.

Courses in History (HIST)

(page 280)

NEW COURSES:

253 Caribbean History (4)

(also listed as *PAS 253*)

Caribbean history and development, including history of indigenous peoples, European colonialism, slavery, resistance, and independence. Includes Spanish-, English-,

French-, and Dutch-speaking Caribbean islands.

350 Evolution and the Modern World (4)

(also listed as *ART 350*, *ENGL 350*, and *PHIL 350*)

Prerequisite: General education humanities requirement. History of the idea of evolution from antiquity to the present and its impact on the culture of the twentieth century.

430 Europe 1815-1914 (4)

(replaces 427 and 428)

European nationalism, industrial growth, imperialism, and the politics of power.

459 Society and the Nuclear Genie (4)

(also listed as *POLS 459*)

Prerequisites: Upper division standing and general education social science requirement. Development of atomic energy and its consequences for society, from the Manhattan Project to the present. Strategic role of scientists in such development and in public policy making about atomic energy.

DELETED COURSES:

427 and 428

HOME ECONOMICS

MODIFIED PROGRAMS:

Bachelor of Arts Degree in Home Economics (page 286)

The major with the *General Option* now requires 92 units, 19-20 lower division and 72-73 upper division; with the *Credential Option*, 92 units, 19 lower division and 73 upper division.

General Option

Preparatory Courses (replaces section titled *General Education Support Courses*)

All students take *PSY 150*. All students select 18-22 units, with adviser approval, from following: *ANTH 250*; *ART 153*, *158*, *159*; *BIOL 200AB*; *CHEM 151*, *152*; *ECON 150*; *MICRO 151*; *SOC 201*.

**Required Lower Division Courses
(19–20 units):**

H E 120, 207, 220, 250, 3–4 units of selected electives (see adviser).

**Required Upper Division Courses
(16 units):**

H E 321, 341, *471, 481

* Satisfies UDWR for this option.

Electives (56–57 units): Select 56–57 units of required and selected electives, with adviser approval, in one of five available career interest areas: *community and consumer services; family and child development; fashion apparel, merchandising, and textiles; nutrition and foods; and residential interiors and housing.*

Single Subject Credential Option

All Single Subject credential programs were under review by the *Commission for Teacher Credentialing* at the time of publication of this bulletin because of new requirements imposed by the commission. Students enrolled in currently-approved programs must complete all credential requirements and apply for the appropriate Single Subject credential by June 30, 1986. This option, which was designed for students pursuing a Single Subject credential with their bachelor's degree objective, is no longer available in its present form. Students who wish further information about pending plans for a new Single Subject option in this major should contact the department office.

**Required Lower Division Courses
(41 units):**

Home Economics (19 units):

120, 201, 207, 210, 220

General Education (22 units):

CHEM 151, 152; ECON 150;
PSY 150; SOC 201

**Required Upper Division Courses
(68 units):**

H E 301 or 404; 302; 305; 310 or 312; 311F; 317; 320 or 421; 321; 341; 360; 430; 440; 441; 444L,P; 460; *471; 481; 491

* Satisfies UDWR for this option.

Electives (5 units)

Select 5 units in home economics and related fields, with adviser approval.

**Bachelor of Science Degree: Option
in Food, Nutrition, and Dietetics
(page 288)**

The major now requires completion of 115–116 units, 16 lower division and 99–100 upper division.

Preparatory Courses (no change)

Requirements for the Major

**Required Lower Division Courses
(16 units):**

H E 120, 207, 210, 220

**Required Upper Division Courses
(23 units):**

H E 310, 311F, 317, 341, 411, *471, 481

* Satisfies UDWR for this option

**Electives in Home Economics
(40 units):**

Select 27–28 units from following:

H E 312, 321, 410, 412, 414AB, 415, 416Nu, 417ABL, 430, 444L,P, 470

Select an additional 12–13 units in any upper division home economics courses.

Electives in Related Areas:

Health Related Courses

BIOL 330; CHEM 431A; H+S 350, 360, 456, 462, 463, 464, 482; MICR 200B, 301, 302, 305; P H 412

Behavioral Science Courses (no change)

Political Science Courses (no change)

Business Administration Courses

ACCT 202; BEOA 301; BIS 294; ECON 472; MGMT 307, 473, 476, 478; MKTG 304, 340, 341, 342, 442

Recommended Electives (no change)



Coordinated Undergraduate Dietetics Program (page 289)

The major now requires completion of 123 units, of which 30 involve a senior year of clinical experience.

Preparatory Courses (no change)

Required Lower Division Courses (20 units):

H E 120, 207, 210, 220; ACCT 202 or BIS 294

Required Upper Division Courses (103 units):

H E 310, 311F, 315, 317, 341, 410, 411, 412 or 312, 414ABC, 415, 416Nu, 417ABL, 418, 419ABC, * 471, 479, 481; MGMT 307

* Satisfies UDWR for this option.

Minor in Home Economics (page 290)

The minor now requires completion of 50–51 units, 26–27 lower division and 24 upper division.

Required Lower Division Courses (26–27 units):

H E 120, 201, 205 or * 305, 210, 220, 250 or * 317, 260

* Selection of an upper division course will change total number of lower and upper division units.

Required Upper Division Courses (24 units):

H E 302, 310 or 312, 321, 341, 360, 444L,P

Certificate Program in Fashion Merchandising (page 290)

H E 202 has been changed to **302**; it appears below in the list of modified courses. HE 454L,P has been changed to **407**; it is described in the list of new courses.

NEW PROGRAM:

Ryan Designated Subjects

Credential (Vocational) (page 291)

This teaching credential authorizes the holder to teach vocational classes in the subject(s) listed on the credential at grades K–12 and adult levels. The credential requires qualifying industrial, business and/or professional work experience in the subject(s) listed on it.

Requirements for the credential:

EDSE 421HE	Methods of Teaching Home Economics (3)
EDSE 472	Principles of Adult and Occupational Education (3)
EDSE 477	Counseling in Adult and Occupational Education (3)
H E 441	Urban Family, Its Resources (4)
H E 491	Programs for Occupational Education in Home Economics (4)
H E 495	Field Work in Home Economics (2–4)

Additional subject matter course work may be needed, as determined by advisement. Applicants must satisfy the U.S. Constitution requirement. Students interested in the credential should contact the department's credential adviser for further details.

Courses in Home Economics (H E) (page 291)

NEW COURSES:

207 Personal and Family Environmental Aesthetics (4)

Techniques for the development of critical and evaluative skills that influence the individual's and family's aesthetic environment.

305 Textiles (4)

Fundamental study of fibers, yarns, fabrics, color, and finishes; emphasis on properties and performance in relation to selection, use, and care. Lecture 3 hours, laboratory 2 hours.

407 Fashion Merchandising (4)

Prerequisite: MKTG 344. Fashion merchandising concepts, merchandising process, and fashion promotion.

MODIFIED COURSES:

202: (changed to **302**—see new listing below)

205 Consumer Textiles (4)

Selection, use, and care of textile components and products with emphasis on the role of the consumer. Lecture 3 hours, laboratory 2 hours.

250: Change units to 4. Add "and aging" to end of first sentence. No further changes.

300: Change prerequisites to *BIOL 155* or *CHEM 158*.

302 **Clothing, Self, and Society (4)**
(formerly 202)

Prerequisites: H E 207 and general education social science requirement. Dress and adornment as products of interrelationships among social, psychological, cultural, and economic factors.

341 **Personal and Family Management Dynamics (4)**

Resource management within the family ecosystem: family goal setting, decision making and change; time, money, and stress management; household communication; ergonomics, work simplification; home production; and use of personal computers.

440 **Personal and Family Financial Management (4)**

Family financial concerns from the consumer viewpoint: banking, savings, and credit; home financing; insurance; investment; income tax; wills and estate planning.

460 **Housing: Shelter and Environment (4)**

Relations of housing, environment, individual, family; development of criteria for evaluation and planning for life cycle; analysis of energy-saving techniques, passive and active solar.

INDUSTRIAL STUDIES

The department office is located in Engineering and Industrial Studies A342.

MODIFIED PROGRAM:

Bachelor of Arts Degree in Industrial Arts (pages 296-297 and 300)

All Single Subject credential programs were under review by the *Commission for Teacher Credentialing* at the time of publication of this bulletin because of new requirements imposed by the commission. Students en-

rolled in currently-approved programs must complete all credential requirements and apply for the appropriate Single Subject credential by June 30, 1986. This option, which was designed for students pursuing a Single Subject credential with their bachelor's degree objective, is no longer available in its present form. Students who wish further information about pending plans for a new Single Subject option in this major should contact the department office.

Courses in Industrial Studies (I S)

NEW COURSE: (Professional and Elective, page 306)

414 **Robotics in Industry (2)**

Prerequisite: Upper division or graduate standing. History, terminology, economics, applications, and implications of industrial robots in the workplace.

LATIN AMERICAN STUDIES

MODIFIED PROGRAM:

Bachelor of Arts Degree in Latin American Studies

Option for Single Subject Credential in Social Science (pages 311 and 312)

All Single Subject credential programs were under review by the *Commission for Teacher Credentialing* at the time of publication of this bulletin because of new requirements imposed by the commission. Students enrolled in currently-approved programs must complete all credential requirements and apply for the appropriate Single Subject credential by June 30, 1986. This option, which was designed for students pursuing a Single Subject credential with their bachelor's degree objective, is no longer available in its present form. Students who wish further information about pending plans for a new Single Subject option in this major should contact the department office.

Courses in Latin American Studies (page 312)

NEW COURSES:

435 Race and Culture in Latin America (4)

Prerequisite: Upper division standing. The role of race in Latin America as expressed in culture and the arts.

442 Cultural Impact of Third World Development (4) (also listed as PAS 442)

The development process in the Third World as it affects and is affected by art and intellectual life.

LIBERAL STUDIES

MODIFIED PROGRAM:

Bachelor of Arts Degree in Liberal Studies (page 314)

GENERAL OPTION

This option requires completion of 76 units, 12 in Liberal Studies and 64 in the four areas listed below; at least 52 of the 76 units must be upper division.

* Required in Liberal Studies (12 units):

- 301 Interdisciplinary Investigation (4)
- 360 Library Research Techniques (4)
- 489 Senior Thesis (4)

* Satisfies the UDWR for this major.

AREA I: CULTURAL HERITAGE

Select 16 units from one theme with no more than 9 units from any department. Certain sections of LB S 454L,P may be used with adviser approval.

Theme 1: The Ancient and Medieval Heritages

- ANTH 425
- ART 406, 411, 416, 476
- ENGL 416, 424, 460, 480
- HIST 400A, 410-413, 419, 421, 422, 445
- MUS 370
- PHIL 311, 312
- POLS 410
- SPCH 470
- T A 462

Any ancient or medieval language course

Theme 2: European Heritage

- ART 421, 436, 451
- ENGL 318-320, 417, 418, 446, 447, 461, 465, 484-486
- FREN 310AB
- HIST 400B, 420, 423-431, 437, 440, 442, 446
- MUS 370-372
- PHIL 313
- POLS 411, 450, 455
- SOC 412
- T A 463

Any modern European language course

Theme 3: Cultures of the Developing World

- ANTH 350, 401, 404, 408, 410, 413, 414
- ART 431, 446, 481
- CH S 400
- ECON 460
- GEOG 424, 425, 427, 428, 430, 433
- HIST 414AB-420, 461, 462, 465, 466, 490AB, 491, 494ABC, 495AB
- LAS 424, 435
- LAS/PAS 442, 460
- MUS 457, 458
- PAS 423, 432
- PHIL 433, 435
- POLS 451-453

Any foreign language course relevant to the developing world (Arabic, Chinese, Hebrew, Hindi, Japanese, Korean, Pidgin, Spanish, Swahili, Tagalog, etc.).

Theme 4: United States Cultural Heritage

- AMER 350, 401-405
- ANTH 406, 407
- ART 441
- CH S 440, 444
- ECON 350, 471
- ENGL 401, 471-475
- GEOG 421, 431, 446
- HIST 470-474, 476, 477, 479
- MUS 450, 451
- PAS 402, 403, 420
- PHIL 430
- POLS 405, 413, 444
- SOC 448, 460
- SPCH 473AB
- T A 313

AREA II: THE NATURAL WORLD

Select 16 units from one theme with no more than 9 units from any department. Certain sections of LB S 454L,P may be used with adviser approval.

Theme 1: Humanity and Its Natural Environment

ANTH 260, 460-462
 BIOL 101-103, 155, 156, 165, 168, 350N
 CHEM 102, 103, 152, 158, 159, 353
 GEOG 160, 410, 415
 GEOL 155, 158, 159, 252, 420N, 421
 PHYS 102, 150, 155
 PSY 170, 401

Theme 2: The Universe and Its Mathematical Rules

ASTR 151, 152, 160
 BIOL 361N
 BIOL 302 or ECON 209 or 309 or PSY 302 or
 SOC 210AB
 C S 190, 290, 333
 ENGR/GEOG 358 or MATH 274
 GEOG 160
 HIST 400C, 402
 MATH 206, 207, 242
 PHIL 404, 405, 485
 PHYS 102, 103
 PSY 430

AREA III: CREATIVE DIMENSIONS

Select 16 units from one theme with no more than 9 units from any department. Certain sections of LB S 454L,P may be used with adviser approval.

Theme 1: Aesthetics and Religion

ANTH 437, 445
 ART 351, 476
 ENGL 441, 451, 481, 482
 HIST 480
 H E 409, 466, 467
 I S 494, 496
 MUS 351, 452
 PHIL 415, 418, 460, 475
 P E 350, 473
 RECR 331
 SOC 445
 SPCH 467
 T A 480

Theme 2: Creative Use of Leisure

You may include any art activity course numbered 202-493 (do not include history, appreciation, or literature classes except ART 356 and 400).

ENGL 408

You may include any music performance course numbered 211-497 (do not include appreciation, literature, theory, or history of music classes except MUS 300 and 400).

P E 356M, 379, 460
 RECR 204
 SPCH 267 or 367, 268
 T A 131, 132, 141-143

AREA IV: THE CONTEMPORARY IDIOM

Select 16 units from one theme with no more than 9 units from any department. Certain sections of LB S 454L,P may be used with adviser approval.

Theme 1: 20th Century Conceptualizations

AMER 403, 404
 ANTH 435, 444, 450
 ANTH/EDFN 443
 ART 426
 ENGL 308, 340, 358, 405, 406, 451, 475, 486
 GEOG 481
 MUS 372, 451
 PHIL 313, 314, 410, 420, 440, 445
 POLS 411
 PSY 308, 410AB, 412AB, 462
 SOC 414, 425, 426
 SPCH 482

Theme 2: Current Domestic Problems

ANTH 406
 BIOL 361N
 BUS 308
 CH S 410AB, 430
 ECON 350, 390, 433, 440
 GEOG 446, 475-477
 HIST 476-477, 480, 483
 PAS 402, 403
 POLS 405, 417
 PSY 422 or SOC 422
 PSY 442, 447
 SOC 430, 447, 448, 460
 SPCH 489

MATHEMATICS AND COMPUTER SCIENCE

MODIFIED PROGRAMS:

Bachelor of Arts and Bachelor of Science degrees in Mathematics

Option for Single Subject Credential (pages 320-322)

All Single Subject credential programs were under review by the *Commission for Teacher Credentialing* at the time of publication of this bulletin because of new requirements imposed by the commission. Students enrolled in currently-approved programs must complete all credential requirements and apply for the appropriate Single Subject credential by June 30, 1986. This option, which was designed for students pursuing a Single Subject credential with their bachelor's degree objective, is no longer available in its present form. Students who wish further information about pending plans for a new Single Subject option in this major should contact the department office.

Bachelor of Arts Degree in Mathematics (page 319)

Option in Pure Mathematics

In electives, change MATH 437 to 457.

Option in Computer Science

In electives, add MATH 403 and 420.

MUSIC

MODIFIED PROGRAMS:

Bachelor of Music Degree (page 334)

Option I

In *Required in Music*, change units to 11 (because MUS 475 is now a 4-unit course).

In *Electives in Music*, change units to 22-24.

Option II

In *Required in Music*, change units to 7-8 (because MUS 473 and 474 now are 4-unit courses). In *Electives*, change units to 5-6.

Option III

In *Required in Music*, change units to 28 (because MUS 471 and 472 now are 4-unit courses).

In *Electives in Music*, change units to 3.

Bachelor of Arts Degree

Additional Requirements for Single Subject Credential (pages 337 and 338)

All Single Subject credential programs were under review by the *Commission for Teacher Credentialing* at the time of publication of this bulletin because of new requirements imposed by the commission. Students enrolled in currently-approved programs must complete all credential requirements and apply for the appropriate Single Subject credential by June 30, 1986. This option, which was designed for students pursuing a Single Subject credential with their bachelor's degree objective, is no longer available in its present form. Students who wish further information about pending plans for a new Single Subject option in this major should contact the department office.

Courses in Music (MUS) (Page 338)

NEW COURSE:

357 Creative Experiences for Well-Being (4)

(also listed as ART 357, P E 357, and T A 357)

Prerequisites: H + S 150 and one general education humanities (arts-C2) course. Exploration of creative experiences in the arts for promotion of mental, emotional, and physical well-being.

MODIFIED COURSES:

312 Orchestral Instruments (3)

Prerequisite: MUS 260 ABC. Development of proficiencies on orchestral instruments; fingering and acoustics. (For majors with instrumental focus.) Meets 4 hours weekly. Each section may be repeated to maximum of 9 units if different instruments are studied.

421 Woodwind Ensemble (1)
(changed to 421A and 421B)

Prerequisite: Consent of instructor. Rehearsal and performance of standard ensemble literature including quartets, quintets, sextets, and larger works. Meets minimum of 3 hours weekly.

421A. For mixed woodwind instruments (for example, flute; oboe; clarinet and bassoon; and flute trios). May be repeated to maximum of 12 units.

421B. For clarinet choir, clarinet, and saxophone trios. May be repeated to maximum of 12 units.

470 History and Literature of Opera (4)

Prerequisite: MUS 370-372. Development of opera from Baroque to present; discussion and analysis of representative opera texts and scores with emphasis on visual experience.

471 History and Literature of Large Choral Forms (4)

Prerequisite: MUS 370-372. Development of large choral forms from Baroque to present; discussion and analysis of representative works including masses, cantatas, and oratorios.

472, 473, 474: Change number of units for each course to 4.

475 History and Literature of Keyboard Music (4)

Prerequisite: MUS 370-372. Development of keyboard music from Renaissance to present; discussion and analysis of representative works for keyboard instruments including harpsichord, organ, and piano.

NURSING

MODIFIED PROGRAM:

Bachelor of Science Degree
(page 348)

In *Required Lower Division Courses*, change units to 41 (because NURS 208 is now a 2-unit course).

Courses in Nursing (NURS)
(page 350)

MODIFIED COURSE:

208: Change units to 2.

PAN-AFRICAN STUDIES

MODIFIED PROGRAMS:

Bachelor of Arts Degree in Afro-American Studies (page 357)

Requirements for the Major

Major requirements for Options I and II combine core and elective programs of 76 units. *Option I* has a core of 52 units and 24 units of electives; *Option II* has a core of 44 units and 32 units of electives. *Option III* requires 131 units, 72 in a prescribed pattern of general education courses and 59 in Pan African Studies and related fields.

Option I: Afro-American Studies

Lower Division

Required in Pan-African Studies (20 units):

101, 250AB, 251AB

Upper Division

Required in Pan-African Studies (28 units):

400, 402, 403, 412, 420, 440, 441

Required in English (4 units):

* 308 or 406

* Satisfies the UDWR for this option

Electives (24 units):

Select six courses in Pan African Studies and related fields (related fields limited to two courses).

PAS 260, 401, 404, 414, 416, 421, 422, 424,
425, 432, 490

CH S 430	MUS 452
GEOG 446	SOC 460
LAS/PAS 460	SPCH 489

Option II: African, Caribbean, and Afro/Latin American Studies

Lower Division

Required in Pan-African Studies (16 units):

101, 250AB, *253

* also offered as HIST 253

Upper Division

Required in Pan-African Studies and related fields (24 units):

ECON 460 or ECON/POLS 426

LAS/PAS 442, 460

PAS 412, 432

PAS/POLS 456

* Required in English (4 units):
308 or 406

* Satisfies the UDWR for this option

Electives (32 units):

Select *eight* courses in Pan African Studies and related fields (related fields limited to *four* courses).

FIN 431	LAS 424
GEOG 427,	MKTG 457
H&S 463	PAS 260, 402, 403, 414, 416,
HIST 414AB,	441, 480, 490
415, 416,	POLS 451, 453
	463, 465

Select *one* course from:

ANTH 413	MUS 458
ART 481	PAS 125, 423, 428
LAS 435	SPCH 489

Option III: Multiple Subject Credential

BLOCK I: ENGLISH, COMMUNICATION

General education requirements (16 units):

ENGL 190, 250
PHIL 160 or POLS 155 or SPCH 176
SPCH 150

Major requirements (24 units):

* ENGL 308 or 406 PAS 422, 425
ENGL 430 SPCH 489, 490

* satisfies the UDWR for this option

BLOCK II: MATHEMATICS AND SCIENCE

3—78189

General education requirements (12 units):

MATH 153

Select 4 units each from general education blocks B1 and B2.

Major requirements (16 units):

Select *three* courses from GE block B3 to meet major requirement. Select *one* GE upper division natural science theme course.

BLOCK III: SOCIAL SCIENCES

Required in related fields (16 units):

HIST 202A or 202B POLS 150

Select *one* from the following:

ANTH 250	L&S 180
CH S 111	PAS 101
GEOG 150	SOC 201

Select *one* GE upper division social science theme course.

Major requirements (16 units):

Select *two* from following:

PAS 250A or 250B, 251A or 251B, 253 *

* also offered as HIST 253

Select *two* from following:

PAS 400–404, 412–420, 432, 440, 460 *, 480

* also offered as LAS 460

BLOCK IV: HUMANITIES

Required in PAS and related fields (8 units):

Select general education humanities courses: *one* from block C2 and *one* from block C3 or C4.

Major requirements (23 units):

ART 400 and 481 P E 420
MUS 400

Select *one* GE upper division humanities theme course.

Select *one* course from PAS 421, 423, 424, and 428.

Minor in Pan-African Studies

The Department of Pan-African Studies offers a minor with options in *Afro-American Political Economy and Development* and *Pan-African Fine Arts*. The minor consists of a combined core and elective program of 24 units.

Lower Division

PAS 101

Options

In addition to the lower division requirement above, each student must select *one* of the two option programs below.

Option I: Afro-American Political Economy and Development

Select *five* courses in Pan-African Studies from following:

PAS 401-403, 412, 416, 440, 441, 480, 490
LAS/PAS 442, 460
PAS/POLS 456

Option II: Pan-African Fine Arts

Select *five* courses in Pan-African Studies from following: 420-425, 428, 490

The Credential Program (page 359)

For detailed information regarding the Multiple Subject Credential option, Bilingual Crosscultural Specialist credential program, and the Afro-American area concentration in the Master of Arts degree program in Urban Education, consult advisers in the department and in the School of Education.

Courses in Pan-African Studies (PAS) (page 359)**NEW COURSES:****253 Caribbean History (4)**

(also listed as HIST 253)

Caribbean history and development, including history of indigenous peoples, European colonialism, slavery, resistance, and independence. Includes Spanish-, English-, French-, and Dutch-speaking Caribbean islands.

412 Third World Women and Development (4)

Prerequisite: Upper division standing; ANTH 250 recommended. The status and role of Third World women in societal development with primary emphasis on Black women in developing countries.

416 Pan Africanism and World Politics (4)

Prerequisite: PAS 101. An examination of the interplay of Pan-Africanism as a cultural and sociopolitical movement in world politics.

442 Cultural Impact of Third World Development (4)

(also listed as LAS 442)

The development process in the Third World as it affects and is affected by art and intellectual life.

456 Politics of the Caribbean and Central America (4)

(also listed as POLS 456)

Prerequisite: POLS 150. Political development and dependency in the Caribbean and Central America.

DELETED COURSES:

120, 154, 302, 340, 354, 395, 410

PHILOSOPHY**Courses in Philosophy (PHIL)** (page 363)**NEW COURSES:****350 Evolution and the Modern World (4)**

(also listed as ART 350, ENGL 350, and HIST 350)

Prerequisite: General education humanities requirement. History of the idea of evolution from antiquity to the present and its impact on the culture of the twentieth century.

418 Religion, Traditional Values, and Modernization in the Third World (4)

Prerequisite: General education humanities requirement. A philosophical investigation of the interaction of tradition and modernity in the development of the Third World.

461 Philosophy and the Nuclear Age (4)

Prerequisite: Upper division standing. The implications of nuclear physics on our way of understanding the world, ourselves, and our values and responsibilities.

MODIFIED COURSES:

412: Change prerequisite to *One PHIL GE course.*

471 **Philosophy of Mind (4)**

Prerequisite: One PHIL course. Philosophical analysis of concepts of mind, mental phenomena, actions, emotions, and will; philosophical theories of mind.

491: Change prerequisite to *One PHIL GE course or GE humanities requirement.*

499: Add: *May be repeated for credit.*

PHYSICAL EDUCATION AND RECREATION/ LEISURE STUDIES

MODIFIED PROGRAM:

Bachelor of Arts Degree in Physical Education (page 367)

Requirements for the Major**Courses in Related Fields**

Delete SOC 250; the course has been deleted from the curriculum.

The Credential Program (Page 371)

All Single Subject credential programs were under review by the *Commission for Teacher Credentialing* at the time of publication of this bulletin because of new requirements imposed by the commission. Students enrolled in currently-approved programs must complete all credential requirements and apply for the appropriate Single Subject credential by June 30, 1986. This option, which was designed for students pursuing a Single Subject credential with their bachelor's degree objective, is no longer available in its present form. Students who wish further information about pending plans for a new Single Subject option in this major should contact the department office.

Courses in Athletics (ATHL)

(page 372)

MODIFIED COURSES:

341-343 **Intercollegiate Athletics (1-7 each)**

Prerequisites: Consent of coach; only NCAA-eligible student-athletes may enroll and participate in these courses. Advanced practice in performance techniques in preparation for intercollegiate competition. *A maximum of 10 units of intercollegiate athletics courses may be applied toward a baccalaureate. Graded CR/NC only.*

341 **Series: Individual or Dual Sports (1-2 each)**

341ar Archery (1)

341b Badminton (1)

341cc Cross Country (M) (W) (1)

341t Tennis (M) (1); (W) (2)

341tf Track and Field (M) (W) (2)

342 **Series: Team Sports**

342bb Baseball (M) (2)

342bk Basketball (M) (W) (2)

342sc Soccer (M) (2)

342v Volleyball (W) (2)

343 **Series: Aquatic Sports**

343d Diving (1)

343s Swimming (M) (W) (1)

343wp Water Polo (M) (1)

Courses in Physical Education (P E)

(page 372)

NEW COURSES:

151JE **Beginning Jazz Exercise (1)**

Individual and dual activities designed to develop skill, knowledge of rules, background and analysis of techniques at beginning level.

251JE **Intermediate Jazz Exercise (1)**

Prerequisites: Corresponding P E 151 course. Individual and dual activities assigned to develop skill, knowledge of rules, background and analysis of techniques at intermediate level.

357 Creative Experiences for Well-Being (4)

(also listed as ART 357, MUS 357, and T A 357)

Prerequisites: H + S 150 and one general education humanities (arts-C2) course. Exploration of creative experiences in the arts for promotion of mental, emotional, and physical well-being.

MODIFIED COURSES:

151gym: Change title to *Men's Beginning Gymnastic Events*.

151gyw: Change title to *Women's Beginning Gymnastic Events*.

151pd: Change to *151sd Beginning Self Defense*.

151lt: Change to *151tf*.

151ltr: Change to *151tr*.

300: Change prerequisite to *BIOL 155 or CHEM 158*.

PHYSICS AND ASTRONOMY

MODIFIED PROGRAM:

The Credential Program (page 385)

All Single Subject credential programs were under review by the *Commission for Teacher Credentialing* at the time of publication of this bulletin because of new requirements imposed by the commission. Students enrolled in currently-approved programs must complete all credential requirements and apply for the appropriate Single Subject credential by June 30, 1986. This option, which was designed for students pursuing a Single Subject credential with their bachelor's degree objective, is no longer available in its present form. Students who wish further information about pending plans for a new Single Subject option in this major should contact the department office.

Courses in Physics (PHYS)

(page 386)

NEW COURSE:

358 Science and Controversy (4)

(also listed as BIOL 358 and CHEM 358)

Prerequisite: General education natural science requirement. Scientific background of issues that affect public welfare, such as genetic technology, chemical pesticides, and energy production and utilization. *No credit toward Biology, Chemistry, or Physics major.*

MODIFIED COURSES:

123: Change prerequisite to *PHYS 122 only* (no recommended courses).

433: Change prerequisite to *PHYS 206* (427 recommended, also).

POLITICAL SCIENCE

MODIFIED PROGRAMS:

Bachelor of Arts Degree in Political Science (page 391)

There are no changes in core requirements except that the *Public Administration* option now utilizes the same core requirements (listed on page 392) as all other options.

Prelegal Option

Electives in Political Science (20 units):

Select as indicated, with adviser approval.

Select *two* from following: 403, 404, 405, 415-419.

Select *one* from each of following groups:

442 or 443

445 or 446

491, 492, or 496

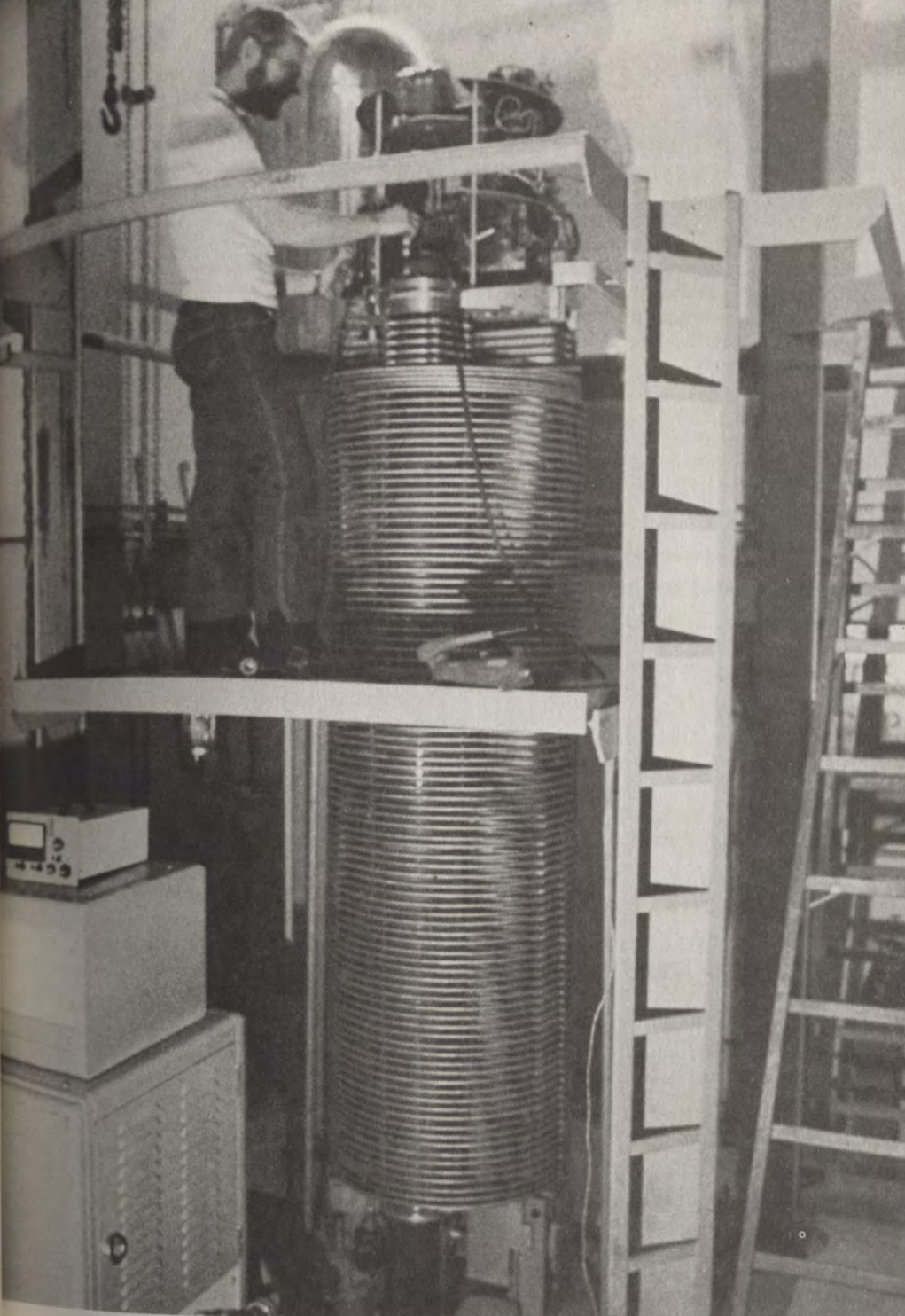
(no other changes in this option)

General Political Science Option

In History (limit of 8 units):

110ABC World Civilization (4-4-4)

(no other changes in this option)



The Department of Physics and Astronomy houses a 4 MeV Van de Graaff accelerator, enabling the campus to assume a leadership role in the study of nuclear physics.

Option for Single Subject Credential in Social Science

All Single Subject credential programs were under review by the *Commission for Teacher Credentialing* at the time of publication of this bulletin because of new requirements imposed by the commission. Students enrolled in currently-approved programs must complete all credential requirements and apply for the appropriate Single Subject credential by June 30, 1986. This option, which was designed for students pursuing a Single Subject credential with their bachelor's degree objective, is no longer available in its present form. Students who wish further information about pending plans for a new Single Subject option in this major should contact the department office.

Public Administration Option

This option now utilizes the core requirements listed on page 392 for all other options: POLS 202, 203, 281; SOCS or BIS 280.

Required in Related Fields (8 units):

Select 8 units from following:

ACCT 202 or ECON 200A

Upper Division

Required in Political Science (12 units):

POLS 405, 416, 460, 475

Required in Political Science Fields (16 units):

Courses in *Politics* area now include 403-405, 415-419

Required proseminars (8 units):

Select two proseminars from 491, 492, and 494

(no other changes in this option)

Minors in Political Science (page 395)

In the *General* minor, required lower division courses now include POLS 200 or 403; POLS 202; BIS or SOCS 280.

In the *Prelaw* minor, electives now include 442 or 443; 445 or 446.

In the *Public Administration* minor, electives now include POLS 403 or 405; two courses selected from POLS 461, 463, 466, and 472.

The *World Politics* minor remains unchanged.

Courses in Political Science (POLS) (page 396)

NEW COURSES:

405 Intergovernmental Relations in the United States (4)

Prerequisites: POLS 150 and upper division standing. Introduction to American intergovernmental relations: American Federalism; national-state, state-state, and state-local relationships; powers and limitations of American governments.

430 Public Policy Analysis (4)

Prerequisites: POLS 150 and upper division standing. Introduction to policy analysis, including nature of public problems, issue definition, implementation, analysis of program impacts and evaluation.

439 Policy Evaluation (4)

Prerequisite: POLS 281. Introduction to policy evaluation, including research design, qualitative and quantitative evaluation, and real world problems of goals and "usability."

458 Environmental Policy and Politics (4)

Prerequisites: Upper division standing and general education American Institutions requirement. Survey of global environmental concerns and public politics; U.S. governmental policies, politics, and policy information process in world perspective.

459 Society and the Nuclear Genie (4) (also listed as HIST 459)

Prerequisites: Upper division standing and general education social science requirement. Development of atomic energy and its consequences for society, from the Manhattan Project to the present. Strategic role of scientists in such development and in public policymaking about atomic energy.

MODIFIED COURSES:

202: Remove // from title (because 201 was deleted).

456 **Politics of the Caribbean and Central America (4)**

(also listed as PAS 456)

Prerequisite: POLS 150. Political development and dependency in the Caribbean and Central America.

491: Change description to: *Individual and group research and writing projects in American politics and theory.*

492 **Proseminar: International Relations and Comparative Politics (4)**

Prerequisites: ENGL 190 and POLS 203. Individual and group research and writing projects in international relations and comparative politics.

494: Change description to: *Individual and group research and writing projects in public law.*

496: Change description to: *Individual and group research and writing projects in public administration.*

499: Add to course description: *May be repeated to maximum of 8 units.*

DELETED COURSES:

201, 305, and 444.

PSYCHOLOGY**MODIFIED PROGRAMS:**

Bachelor of Arts Degree in Psychology (page 401)

Advisement

Students must now select an adviser *by the end of their first year on campus*; those interested in physiological psychology must take additional natural science courses indicated by their adviser. Premed students must see a Health Sciences adviser (in Biological Sciences 243) before registering for any courses.

Requirements for the Major

The major now requires a core of 57 units in psychology, 13 lower division and 44 upper division. In addition, both options require 16 units in an *area of emphasis* and the *Single Subject Credential* option includes an additional 24–28 units in related fields, both selected with adviser assistance. Students must complete all general education block A and B requirements before taking upper division psychology courses.

Core Requirements**Lower Division**

PSY 150, 170, 171, 202 (*related support courses no longer required*)

Upper Division

PSY 302, *304AB, 308, 412A, 418A, 422, 424B or 428, 425, 463

* Satisfies the UDWR for this major

General Option

AREA OF EMPHASIS (16 units) Select one area listed below, with adviser assistance.

I. Behavior Analysis

EDCE 406; PSY 417, 424A, *428

II. Introduction to Clinical Psychology

PSY 326, 405, 406, 410AB, *428, 436A, 438, 485

III. Community Psychology

PSY 405, 410A, 419, *428, 441, 445, 452, 464, 485

IV. Developmental Psychology

PSY 412B, 433, 462 required.

Select one from: H E 321; PSY 326, 432; SOC 322A or 322B or 450; SPCH 494

V. General Theory

PSY 416 and 423 required.

Select 8 units from: HIST 400ABC; PHIL 313, 314, 446, 460, 471, 485; PSY 420, 424A

VI. Industrial Psychology

PSY 442 and 446 required.

Select 8 units from: POLS 452, 463; PSY 420, 441, 447, 448, 452

VII. Statistics and Methodology

PSY 409 and 417 required.

Select 8 units from: C S 290, 380; PSY 411, 414, *428, 430, 440

VIII. Social Psychology

PSY 418B and 441 required.

Select 8 units from: PAS 400; PSY 420, 440, 445; SOC 430, 442; SPCH 489

* if not taken in the core

Option for Single Subject Credential in Social Science

This option requires completion of an *area of emphasis* listed above in Option I. In addition, students must complete electives listed below (24–28 units).

Electives in Related Fields (24–28 units):

(this list remains unchanged from the 1983/84 catalog)

All Single Subject credential programs were under review by the *Commission for Teacher Credentialing* at the time of publication of this bulletin because of new requirements imposed by the commission. Students enrolled in currently-approved programs must complete all credential requirements and apply for the appropriate Single Subject credential by June 30, 1986. This option, which was designed for students pursuing a Single Subject credential with their bachelor's degree objective, is no longer available in its present form. Students who wish further information about pending plans for a new Single Subject option in this major should contact the department office.

Minor in Psychology

The minor has not changed but unit totals are incorrect in the 1983/84 catalog. The minor requires 34 units; 8 lower division and 17 upper division units are required, and there are 15 elective units.

Courses in Psychology (PSY) (page 403)

NEW COURSE:

488 Gender Differences (4)

(also listed as BIOL 488N)

Prerequisites: BIOL 155. Biological and psychological differences between the sexes. Topics include genetic sexual determination, sexual differentiation, role of hormones in physiology and behavior, experimental methodology, psychological differences in ability and personality. *No credit toward Biology major.*

MODIFIED COURSES:

170: Change title to *Introductory Physiological Psychology*.

202: Change prerequisites to: PSY 150 and general education critical thinking and mathematics requirements.

408: Change course description. Natural behaviors and learning in animals, from single cell to apes; emphasis on evolution of behavior and survival in the natural environment. Topics include social behavior, development, mating, and parental behavior.

436AB **Counseling and Psychotherapy: Theories, Methods, and Issues (4–4)**

436A. Prerequisites: Senior or graduate standing; PSY 410AB or 418AB. Theoretical systems and approaches to counseling and psychotherapy. Student participation in interviews and related activities.

436B. Prerequisite: PSY 436A. Current issues and problems in counseling and psychotherapy with emphasis on training. Student participation in intensive evaluation of therapy-related activities.

SOCIAL SCIENCE

MODIFIED PROGRAM:

Bachelor of Arts Degree in Social Science (page 409)

The changes listed below have occurred because the following courses have been deleted from the curriculum: GEOG 301, 420, 439; HIST 427 and 428 (*replaced by 430*);

POLS 201; POLS 305 (*replaced by 405*); and SOC 250.

In all options:

Delete POLS 201 and SOC 250.

Where a choice from GEOG 420-431 occurs, the choice is now GEOG 421-431.

Where a choice from HIST 423-429 occurs, the choice is now HIST 423-430.

In the *Geography* option, the third set of courses under (1) in *electives* now reads: Select 4 additional units from preceding groups or from GEOG 402-415, 446-471, 477-499.

In the *History* option, (5) under *electives* now reads: POLS 403-496, except 401, 460-476.

The Credential Program (page 411)

All Single Subject credential programs were under review by the *Commission for Teacher Credentialing* at the time of publication of this bulletin because of new requirements imposed by the commission. Students enrolled in currently-approved programs must complete all credential requirements and apply for the appropriate Single Subject credential by June 30, 1986. This option, which was designed for students pursuing a Single Subject credential with their bachelor's degree objective, is no longer available in its present form. Students who wish further information about any pending plans for a new Single Subject option in this major should contact the department office.

rolled in currently-approved programs must complete all credential requirements and apply for the appropriate Single Subject credential by June 30, 1986. This option, which was designed for students pursuing a Single Subject credential with their bachelor's degree objective, is no longer available in its present form. Students who wish further information about any pending plans for a new Single Subject option in this major should contact the department office.

NEW OPTION:

Option: Human Development and Aging

Required courses (32 units):

SOC 301*, 322B, 390, 412, 414, 450

BIOL 484N PSY 462

* satisfies UDWR for this option

Select at least *four* from following (16 units):

SOC 322A, 452, 453, 474, 476

Select at least *one* from following (4 units):

SOC 425, 434, 447, **454, 478

** when topic is gerontology

Electives in Sociology and other fields (20-22 units):

Select one from each of following groups (12 units):

SOC 420, 421, 440, 441

SOC 422, 430, 442

SOC 461, 472, 475, 479

In related fields (8-10 units):

BIOL 319N, 486N; CH S 311, 410AB; H E 310, 411, 412, 440, 441, 443, 445; NURS 440, 456, 462, 464, 470, 471; PAS 400; POLS 403, 417, 441, 460, 461, 463, 466, 468, 476; PSY 401, 418AB, 419, 436AB, 445; RECR 360, 361, 412, 422, 423, 461, 471, 472

SOCIOLOGY AND SOCIAL WORK

MODIFIED PROGRAM:

Bachelor of Arts Degree in Sociology (page 412)

Option: Single Subject Credential in Social Science

All Single Subject credential programs were under review by the *Commission for Teacher Credentialing* at the time of publication of this bulletin because of new requirements imposed by the commission. Students en-

Courses in Sociology (SOC) (page 414)

NEW COURSE:**462 Institutional Racism and Poverty (4)**

Prerequisite: SOC 201. Development of institutional racism and poverty; its impact on development of social policies and delivery of social services; methods of reducing racism and poverty in America.

DELETED COURSE:

250.

THEATRE ARTS**MODIFIED PROGRAM:*****Bachelor of Arts Degree in Theatre Arts***

The major now requires a total of 75–79 units, 48 in core requirements and the remainder selected from one of three available options. In addition to course requirements, all Theatre Arts majors must enroll in 2 units of T A 300 each quarter they enroll for any other T A course (except 152 or 357). T A 310 is available to students who are cast in major departmental productions.

Core requirements (48 units):***Lower Division—no change.******Upper division (25 units):***

T A 311, 312, 313, 322, *390, 439, 445

* Satisfies the UDWR for this major.

Options

Select one of following options, with adviser approval.

Option A: Acting-Directing***Required courses (16 units):***

T A 341, 342, 343, 348, 349, 446

Electives (11 units):

Select two from following:

T A 301, 306, 460–476, 485

Select one from following:

T A 426, 431, 434

Option B: Theatre History and Literature***Required courses (20 units): no change)******Electives (6–7 units):***

Select one from following:

T A 301, 306, 341, 470, 472, 476, 485

Select one from following:

T A 426, 431, 434

Elective in English (4 units):

Select one from following—no change

Option C: Technical Theatre***Required courses (9 units):***

T A 426, 431, 434

Electives (17–18 units):

Select two from following:

T A 301, 306, 460–463, 471, 472, 485

Select three from following:

T A 422, 427, 432, 435, 470

Courses in Theatre Arts (T A)
*(page 420)***NEW COURSES:****310 Play Performance (2)**

Prerequisite: Admission by audition only. Detailed work on a major production with rehearsal and performance requirements. Enrollment required for performance participation. Meets more than 6 hours each week. May be repeated to maximum of 12 units.

357 Creative Experiences for Well-Being (4)*(also listed as ART 375, MUS 357, and P E 357)*

Prerequisites: H + S 150 and one general education humanities (arts-C2) course. Exploration of creative experiences in the arts for promotion of mental, emotional, and physical well-being.

MODIFIED COURSES:**100:** New title—*Play Practicum*.**131 Stagecraft I (3)**

Technical theatre practices developed in lectures, demonstrations, and workshop experience; basic tools and techniques of sce-

nery construction; reading technical drawings; technical theatre procedures and organization. Additional hours required.

132 Stagecraft II (3)

Technical theatre practices developed in lectures, demonstrations, and workshops; stage properties, drafting techniques, basic stage lighting, and sound effects. Additional hours required.

300 Play Production (2)

Technical preparation and/or presentation of University-sponsored productions. Theatre Arts majors must enroll every quarter; others must enroll whenever cast in department productions. Meets more than 6 hours each week. May be repeated to maximum of 24 units.

426 Introduction to Stage Costuming (3)

Prerequisite: Two courses in dramatic literature. Basic principles of costume design and construction; historical survey of costumes from ancient to modern times as related to stage costume. Additional hours required.

427 Stage Costume Design (3)

Prerequisite: T A 426. Theory and application of costume design and construction for stage; research methods; principles of design, dramatic analysis, rendering layout, and construction techniques. Additional hours required.

431 Introduction to Stage Scenery (3)

Prerequisites: T A 131-132. Theory and practice of scenery design; demands of physical stage, script, and director. Working drawings, models, and sketches; perspective rendering. Additional hours required.

432 Stage Scenery Design (3)

Prerequisite: T A 431. Advanced problems in design, projects in design of drama, comedy, and musical theatre. Additional hours required.

434 Introduction to Stage Lighting (3)

Prerequisites: T A 131-132. Theory and practice of lighting design; functions and properties of light on stage; basic electricity, optics,

color. Light plots and plans, lighting equipment and its use, control systems. Additional hours required.

435 Stage Lighting Design (3)

Prerequisite: T A 434. Advanced problems in lighting design; projects in conception and execution of designs for the stage. Additional hours required.

439 Theatre Management (4)

Prerequisites: T A 131, 132, and 152. Theory and practice of theatre operations, organization, and administration. Examines stage management, production, box office, promotional, and touring procedures.

YOUTH AGENCY ADMINISTRATION

(page 426—new)

American Humanics Program

PROGRAM OFFICE:
Library North Lobby
Phone: 224-3671

Courses in Youth Agency Administration (YAA) are utilized in the new credit certificate program in *Voluntary Youth Agency Administration*. Requirements for the certificate are listed below.

NEW PROGRAM:

Credit Certificate Program in Voluntary Youth Agency Administration

This certificate program, which is intended to prepare professionals for careers in youth agency administration, requires a minimum of 32 units, selected in consultation with the American Humanics director. The program includes course work in seven major areas and an internship designed specifically for the program. In addition to the requirements listed below, students who have not taken CH S 111, L+S 180, or PAS 101 as part of their general education program must complete either PAS 440 or SOC 460.

Accounting and Budgeting*Select one from following:*

*ACCT 202 or POLS 466

Community Organization*Select one from following:*

PSY 445, RECR 360, *SOC 472

Counseling and Group Work*Select one from following:*

*EDCE 406, PSY 405 or *436A, SOC 420 or 475

Personnel Management*Select one from following*

MGMT 473, POLS 463 or 472, PSY 446

Public Relations and Communication*Select one from following:*

JOUR 496, POLS 470, PSY 420, SOC 424, SPCH 330 or 489

Youth Agency Administration*Required course:*

YAA 290

Fund Raising*Required course:*

YAA 490

* preferred course

Courses in Youth Agency Administration (YAA)**290 Introduction to Youth Agency Administration (4)**

History, philosophy, programs, and organization of the major national voluntary youth service agencies from a professional management perspective; role of the professional executive; the nature of volunteerism. Required field visits.

490 Volunteer Management and Fund-Raising (4)

Prerequisite: YAA 290. Development of executive skills in managing volunteers and raising funds for youth-serving agencies; sources and techniques of financial development for community agencies; management of voluntary staff and directorial boards.



GRADUATE STUDY

Graduate Degrees

Master of Arts Degrees

(pages 428-429)

A *Master of Fine Arts degree in Art* is now offered.

Master of Science Degrees

A new option has been added to the Master of Science degree in Counseling—*Applied Behavior Analysis*. The requirements appear on page 86 of this bulletin.

ADMISSION

Admission Categories and Requirements

Postbaccalaureate Standing.
Unclassified.

SPECIAL ACTION. (Page 432)

Applicants who were in good standing at the last college attended but who do not meet the above admission requirements may petition for admission by *special action* if acceptable alternative evidence exists that they possess sufficient academic, professional, and other potential pertinent to their proposed graduate objective.

Special action admission may be granted by the appropriate school graduate dean upon recommendation of both the proposed major department and school graduate studies committee.

Students admitted by special action to pursue a master's degree program will be admitted to conditionally classified graduate status and must complete specific prerequisites and a minimum of 14 units of qualifying courses specified by the major department and school graduate dean with a minimum *B* (3.0

on a scale in which *A* = 4.0) average, as specified on page 438 of the 1983/84 catalog. Students admitted to pursue a nondegree program (e.g., credential, certificate) must complete special requirements as designated by the major department and school graduate dean.

Postbaccalaureate Application Procedures (page 434)

All information remains the same except the application fee which is now \$35.

Transcript Requirements (page 435)

All information remains the same except that transcripts of individuals who do not file an application for admission are retained for *one* year only. Transcripts are retained two years for those who are admitted but do not enroll in the quarter of application.

PROCEDURES AND REGULATIONS

Graduate Writing Proficiency Requirement (page 440)

All CSU students are required by Trustee policy to demonstrate competence in writing skills as a requirement for all advanced degrees and all credentials. All postbaccalaureate and graduate students at Cal State L.A. who are subject to requirements of the 1984/85 or any later catalog and who are pursuing a graduate degree or a credential are required to pass a writing proficiency examination within two quarters of admission to postbaccalaureate or graduate standing and prior to advancement to candidacy. This examination is the same as that required for the baccalaureate. Students who fail to pass the writing examination within two quarters of admission will not be permitted to regis-

ter for further course work until this requirement has been met.

Successful performance on this examination is evidence of compliance with the graduate writing proficiency requirement. However, departments may require of their majors additional discipline-based course work in writing. See your faculty adviser for requirements in your major department.

Graduate or postbaccalaureate students who have satisfied the upper division writing requirement at this campus, or such a requirement elsewhere with an implied level of achievement at least

equivalent to that on this campus, may petition for certification of the graduate writing proficiency requirement. A graduate or postbaccalaureate student who has satisfied the graduate writing proficiency requirement shall continue to be certified with no time limit on such certification.

The *Schedule of Classes* contains information about the examination fee, retake charge, and other test details.

Foreign Language Proficiency Examination (page 442)

The name of the examination is *Foreign Language Reading Examination*.



GRADUATE PROGRAMS

This section contains information about new graduate level programs and courses, as well as those that have been modified or deleted since the 1983/84 catalog was issued.

ART

NEW PROGRAM:

Master of Fine Arts Degree in Art (page 452)

The MFA degree in Art requires a minimum of 90 units of approved course work when starting with a baccalaureate, or 45 units when starting after completion of a Master of Arts degree in Art.

Required in General MFA Subjects (13 units):

- ART 502MFA (3)
- *ART 504MFA (3)
- *ART 508MFA (3)
- ART 531 (4)

* may be repeated to total of 6 units

Required in Art History (12 units):

Select from following.

- ART 406, 411, 416, 421, 431, 436, 441, 446, 451, 461, 466, 471, 476, 481, 486, 501

Required in Area of Specialization (45 units):

The following repeatable courses must be taken for a total of 27 units.

- ART 595MFA, 598MFA, 599MFA (3 units each)

Select 18 units from repeatable courses listed in one of the following areas:

Design

- ART 503, 508MFA

Studio Arts, Ceramics, Metals, Textiles

- ART 502, 504, 544, 584

Electives in Art (12 units):

Select from following with adviser assistance.

- ART 403, 405, 408, 409, 412, 413, 414, 415, 417, 419, 423, 424, 427, 428, 429, 433, 435, 438, 439, 443, 447, 448, 454L, P, 460, 463, 464, 467, 468, 471, 472, 473, 474, 475, 478,

- 479, 484, 485, 486, 488, 493, 510, 515, 530

Electives outside Art (8 units):

Select 8 units of related upper division or graduate level course work with adviser approval.

Courses in Art (ART) (page 453)

NEW COURSES:

502MFA MFA Seminar: Visual Arts (3)

Prerequisite: Classified standing in MFA program. Critical approach to the visual arts through examination of the roles and works of artists in society. May be repeated to maximum of 9 units.

504MFA MFA Seminar: Studio Art (3)

Prerequisite: Classified standing in MFA program. Philosophical, conceptual, and practical aspects of professional studio arts. May be repeated to maximum of 9 units.

508MFA MFA Seminar: Design (3)

Prerequisite: Classified standing in MFA program. Aesthetic, functional, and technical aspects of professional design. May be repeated to maximum of 9 units.

595MFA MFA Professional Field Work in Art (1-9)

Prerequisite: Classified standing in MFA program. Supervised field work experience in professional art industry: museums, publications, design, and business. May be repeated to maximum of 9 units.

598MFA MFA Directed Study (1-12)

Prerequisite: Consent of instructor to act as sponsor. Independent directed study of advanced topics in professional art fields. Regular conferences with sponsor. May be repeated to maximum of 12 units.

599MFA MFA Project (1-12)

Prerequisite: Advancement to candidacy, consent of instructor to act as sponsor, and departmental approval of project prior to registration. Independent research resulting in MFA project accompanied by a written abstract. May be repeated to maximum of 12 units. Graded CR/NC only.

MODIFIED COURSE:**501 Seminar: Art History (4)**

Prerequisite: Eight units in upper division art history. Research into pertinent topic in art history. Presentation and discussion of research papers. May be repeated to maximum of 8 units.

BIOLOGY**MODIFIED PROGRAM:****Master of Science Degree in Biology (page 455)****Required Courses (23 units)**

All students must take BIOL 510 during their first year in classified graduate standing. (All other information remains the same.)

Comprehensive Examination or Thesis (0, 1-9 units):

All students must present a final graduate seminar. Those who have completed a thesis

should present a seminar about their thesis topic. Those who select the comprehensive examination should select a topic and prepare a seminar from the literature.

- 596 Comprehensive Examination (0)
599 Thesis (1-9)

Courses in Biology (BIOL)

(page 456)

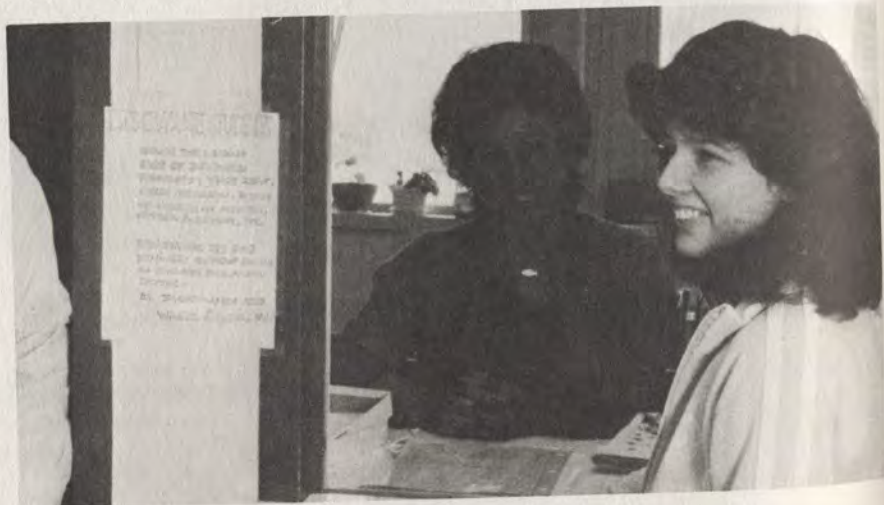
NEW COURSE:**510 Graduate Seminar: Biology (1)**

Attendance at regular departmental seminar program: participation in seminar training program with course instructor; presentation of a departmental seminar. *Must be repeated to maximum of 2 units.* Graded CR/NC only.

MODIFIED COURSES:**400-level Courses**

All 400-level courses may be applied toward requirements for the master's degree except BIOL 499 and all courses with the suffix N, subject to limits established by the department and approval of the graduate adviser.

- 501:** Add the following. May be repeated once for credit as subject matter changes.
- 599:** Delete the words "and project" from the course title and description.



SCHOOL OF BUSINESS AND ECONOMICS

MODIFIED PROGRAMS:

Admission to Master's Degree Programs in Business Administration and Economics (page 458)

The school admits graduate students to the MBA, MS in Business Administration, MA in Economics, MS in Accountancy, and MA in Business Education degree programs in conditionally classified standing and classifies them when eligible.

In addition to university admission requirements, applicants to graduate programs in the School of Business and Economics must satisfy criteria outlined below. The School of Business and Economics examines the academic ability and managerial potential of each candidate, taking into consideration all academic work. Graduate Management Admission Test (GMAT) scores, letters of recommendation, work experience, level of job responsibility and other relevant factors. Applicants are evaluated on the merits of their own application in comparison with all applicants for the quarter.

Application Procedure for School of Business and Economics

Applicants must submit the following information by the deadlines listed:

- (1) Application to the University for desired quarter of admission:
- * (2) Official transcripts as indicated on application (*sent directly to Office of Admissions*);
- (3) Separate graduate program application sent directly to the School of Business and Economics;
- ** (4) Graduate Management Admission Test (GMAT) scores (*sent directly to School of Business and Economics*) (*test must have been taken within 5 years of application date*); and
- (5) Three letters of recommendation (*sent directly to School of Business and Economics*). References from employers and/or academicians are acceptable. Recommendation forms are available at the Graduate Advisement Center.

* Must include verification of bachelor's degree.

** GMAT is given 4 times each year; contact Graduate Advisement Center for further information.

Applications and Supporting Document Deadlines

Quarter	Deadline
Fall (September)	March 31
Winter (January)	September 30
Spring (March)	November 30
Summer (June)	March 1

Classified Graduate Standing (page 459)

Classified graduate students are those officially admitted to master's degree programs. Students who held a baccalaureate in business and who have completed preparatory courses listed below with a minimum C grade in each course will be admitted to the

program in classified graduate standing. Those without a baccalaureate in business or who have otherwise not fulfilled preparatory course requirements will be admitted in conditionally classified standing.

Students are required to complete the following preparatory business and related

courses for admission to classified graduate standing for the M.S. degree in Accountancy (52 units), the M.S. degree in Business Administration (52 units), and the M.B.A. degree (52 units).

ACCT 260R, 360R, (Accounting students substitute 373R for 360R); BEOA 361R; BIS 262R; ECON 311R, 369R; FIN 261R, 363R; MGMT 366R, 367R, 368R; MKTG 364R; MATH 242.

Master of Arts Degree in Business Education

In addition to University requirements for admission to graduate study, applicants must satisfy the following requirements for classified standing: (1) completion of the 48 quarter units of acceptable basic business courses, and (2) approved graduate program on file in the Graduate Advisement Center. The 48 units of preparatory business and related courses are listed below:

ACCT 260R; BEOA 313, 361R, 419; BIS 262R; BUS 308; ECON 200AB, 369R; FIN 261R, 363R; MKTG 364R.

Suitable credit will be given for any equivalent courses taken either as an undergraduate or graduate prior to matriculation at Cal State L.A., provided the student supplies acceptable proof of course equivalency. All courses taken subsequent to matriculation must be taken at Cal State L.A. A minimum 3.0 grade point average is required in all basic business core courses taken subsequent to the baccalaureate.

Master of Arts Degree in Business Education (page 463)

Admission requirements are listed above.

Courses in Accounting (ACCT) (page 465)

Undergraduate Courses

NEW COURSES:

260R Accounting Principles (4)

Fundamentals of accounting theory and practice; how accounting serves the business entity.

360R Management Accounting and Analysis (4)

Prerequisite: ACCT 260R. Use of accounting data for cost control and decision-making. Topics include cost accounting, cost volume profit analysis, relevant costs, profit planning, capital budgeting, and tax considerations.

DELETED COURSES:

202R, 300R.

Courses in Business Education and Office Administration (BEOA) (page 466)

Undergraduate Courses

NEW COURSE:

361R Techniques of Managerial Communication (4)

Principles of report preparation. Techniques of collecting and interpreting data and writing reports. Discussion and application of letters, memos, and managerial communication.

DELETED COURSE:

301R.

Courses in Business Information Systems (BIS) (page 467)

Undergraduate Courses

NEW COURSE:

262R Business Information Processing (4)

Fundamentals of computer hardware, software, and communication subsystems; business modeling in IFPS; programming in BASIC; use of time-sharing terminals for interactive data processing.

DELETED COURSE:

294R.

Courses in Finance (FIN)

(page 470)

Undergraduate Courses

NEW COURSE:

363R Managerial Finance (4)

Prerequisite: ACCT 360R and ECON 369R. Analysis of the financial management function; development of tools, procedures, and theories used in analyzing the investment decision. The financing decision, the dividend decision, and the management of working capital.

DELETED COURSE:

303R.

Courses in Management (MGMT) (page 471)

Undergraduate Courses

NEW COURSE:

366R Production and Operations Management (4)

Prerequisite: ECON 369R. Problems, tech-

niques of analysis, and recent developments that relate to production of goods and services. Analysis of problems in production control, demand forecasting, quality control, scheduling, and logistics.

DELETED COURSE:

306R.

Courses in Marketing (MKTG) (page 472)

Undergraduate Courses

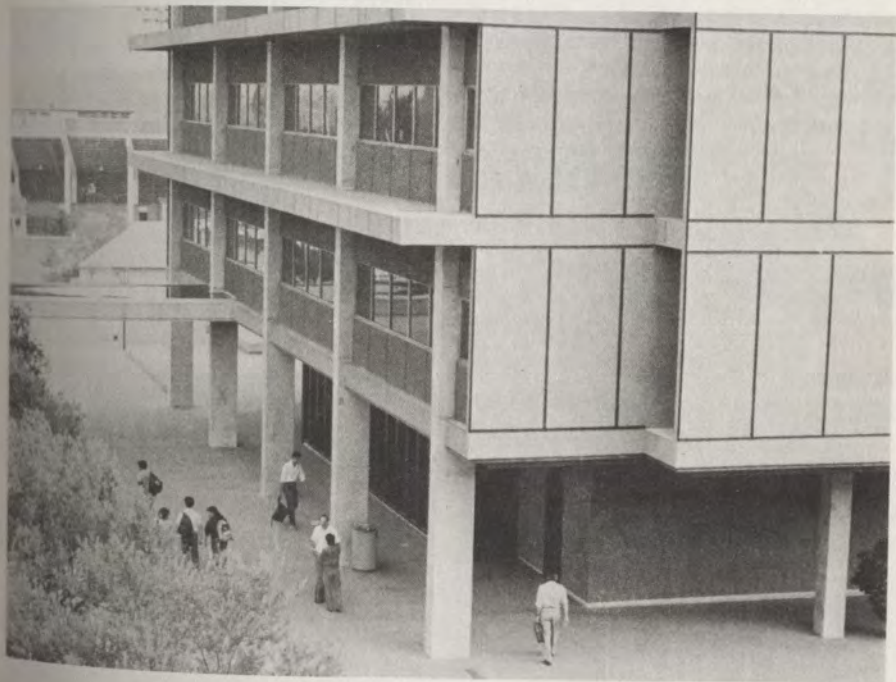
NEW COURSE:

364R Managerial Marketing (4)

Prerequisites: BIS 262R and ECON 369R. Marketing role in business and economy; changing customer wants and social needs; product/service development; distribution, promotion, and pricing strategies; managerial approach in planning, execution, and control of marketing programs.

DELETED COURSE:

304R.



CHEMISTRY (page 474)

The department name has been changed to *Department of Chemistry and Biochemistry*.

COMMUNICATION STUDIES

The *Master of Arts degree in Speech Communication* offers a choice between a comprehensive examination and a thesis. A *project* is no longer offered.

Courses in Speech Communication (SPCH)

(page 484)

MODIFIED COURSES:

530: Change title to *Seminar: Organizational Communication* and add *SPCH 330* to list of prerequisite choices.

540 Seminar: Interpersonal Communication (4)

(formerly part of *SPCH 530*)

Prerequisite: *SPCH 350, 450, 478, or 487*. Contemporary theoretical and methodological issues and constructs in interpersonal communication. May be repeated to maximum of 8 units with adviser approval.

550 Seminar: Communication Theory (4)

(formerly part of *SPCH 589*)

Prerequisite: *SPCH 450 or 487*. Examination

of theoretical perspectives, principles of theory building, and new developments in communication research. May be repeated to maximum of 8 units with adviser approval.

560 Seminar: Language and Communication Behavior (4)

(formerly part of *SPCH 589*)

Prerequisite: *SPCH 450, 461, 463, or 494*. Contemporary theories, research perspectives, and subject areas in language and communication behavior. May be repeated to maximum of 8 units with adviser approval.

590 Seminar: History of Speech Communication in America (4)

Prerequisite: Consent of instructor. Historical movements, contemporary theories, and development of speech communication as a discipline of study; examination of significant literature, scholars, and leaders in the field. May be repeated to maximum of 8 units with adviser approval.

599: Delete the words "or project" from the title and description.

DELETED COURSE:

589.

Courses in Speech Pathology (SPTH) (page 485)

MODIFIED COURSE:

599: Delete the words "or project" from the title and description.

SCHOOL OF EDUCATION

MODIFIED PROGRAM:

Graduate Degree Programs (page 492)

(2) *Educational Administration* is no longer an option within the M.A. degree in Education. It has been changed to a *Master of Arts degree in Educational Administration*. The degree program appears on pages 508–510 of the 1983/84 catalog with modifications on page 87 of this supplement.

Courses in Education (EDUC)

(page 493)

NEW COURSES:

510 The Future of Education in a Changing Society (4)

Review and critique of theoretical contributions of leading educational futurists; future oriented perspectives on significant educational issues; curricular and other educational modifications in light of rapid socio-cultural change.

511 Long Range Planning in Educational Settings (4)

Long range planning techniques for a systematic study of the future within the specific context of educational institutions and their environments.

512 Strategies for Introducing Futures Studies into Curriculum (4)

Teaching strategies designed to help individuals develop understandings, attitudes, and abilities to deal more effectively with change and with the social responsibilities of living in an information society.

MODIFIED COURSE:

522: Changed to 522 (4 units) and 522L (1 unit—laboratory experience)

COUNSELOR EDUCATION

MODIFIED PROGRAM:

Master of Science Degree in Counseling

The Master of Science degree in Counseling includes the following options: (1) *School Counseling and School Psychology*, with Elementary and Secondary specializations, (2) *Community College Counseling*; (3) *Rehabilitation Counseling*; and (4) *Applied Behavior Analysis*.

Required Core (28 units):

In Counselor Education (22 units):

EDCE 405AB, 428AB, 503, 505

Self-Development and Special Interest (6 units):

Select from following with adviser approval.

EDCE 406, 445, 490, 504, 597

Comprehensive Examination, or Thesis or Project (0, 7 units):

(no change)

Option in School Counseling and School Psychology

Prerequisites:

EDFN 452, PSY 410A

Required Courses:

EDCE 447, 460, 501, 502, 528, 581, 582, 586CO, 593

EDSP 400

Select two courses from following groupings:

EDCE 506 and 507 or EDCE 508 and 509

Select one course from following (4 units):

EDCE 506, 508, 531A, 532, 552

EDCE 510 is recommended for *School Counseling* candidates and is required for candidates seeking the *School Psychology* credential.

Select courses with adviser approval, as required to remedy deficiencies.

Candidates with three years of public school counseling or teaching experience are required to complete 200 clock hours (5 units) of EDCE 586CO. Other candidates are required to complete 280 clock hours (7 units).

Option in Community College Counseling

Required courses (42–48 units):

EDCE 406, 448, 506–510, 532, 581, 586CC, 587

Option in Rehabilitation Counseling

Required courses (51 units):

EDCE 448, 501, 540AB, 541AB, 542ABC, 543, 588

Option in Applied Behavior Analysis

(new option)

Required courses (45 units):

EDCE 406, 501, 502, 504, 593
EDCE 586CO or 588 or PSY 595
PSY 417, 424A, 428, 500, 528

Courses in Counselor Education (EDCE) (page 504)

NEW COURSES:

506 Individual Counseling Strategies (4)

Prerequisites: EDCE 428A, 447 or 448; 505; and consent of instructor and adviser. Corequisite: EDCE 428B. Techniques and strategies of individual counseling that apply to specific settings or derive from specific theories of counseling.

507 Individual Clinical Counseling (2)

Prerequisites: EDCE 428A; 447 or 448; 501; 506; and consent of instructor and adviser. Corequisite: EDCE 428B. Supervised individual career and personal counseling in the campus guidance clinic. Students implement theory, develop case management strategies, and develop their own counseling behavior. Lecture 1 hour, laboratory 3 hours.

508 Family and Group Counseling: Theory and Practice (4)

Prerequisites: EDCE 505 and consent of instructor. Principles and strategies of systems and development theory as applied to group and family counseling. Future directions and current research in family counseling theory and practice.

509 Family and Group Counseling Laboratory (2)

Prerequisites: EDCE 501 and 508 and consent of instructor. Supervised counseling of couples and families, utilizing strategies and techniques of systems theory. Practical experience designed to enhance students' skills as family/group counselors. Lecture 1 hour, laboratory 3 hours.

528 Advanced Research and Measurement in School Counseling (4)

Prerequisites: EDCE 428AB and 501. Corequisite: EDCE 586CO. Procedures for research evaluation, experimental design and analysis, and case assessment for school counselors.

540AB Foundations of Rehabilitation (4-4)

Prerequisite: Admission to graduate rehabilitation counseling option. Introduction to profession of rehabilitation counseling, including study of roles and functions of rehabilitation counselors and impact of disability on psychological, physical, and social life of individuals.

541AB Intervention Strategies with the Disabled (4-4)

Prerequisite: Admission to Department of Counselor Education and permission of instructor. Corequisite: Appropriate field work. Skills and techniques necessary for providing effective counseling service for disabled adults, in career and personal adjustment situations. Includes theories of counseling, decision-making strategies, case-management and placement methods.

543 Assessment and Work Evaluation with the Disabled (4)

Prerequisites: EDCE 428AB and 448 and admission to graduate rehabilitation counseling option. Review of assessment and evaluation methods used in rehabilitation of disabled adults, with emphasis on work evaluation and specialized applications of standardized psychometric instruments. Interpretation and reporting of results.

593 Practicum: Staff Development and Consultation (3)

Prerequisites: EDCE 502 and 586CO. Practical experience in consulting with parents and teachers regarding behavior management problems, and in assisting school personnel in providing in-service training. Graded CR/NC only. Lecture 1 hour, laboratory 3 hours.

MODIFIED COURSES:

501 Behavioral Analysis in School and Agency Settings (4)

Prerequisite: Classified graduate standing or teaching credential. Application of behavioral management procedures by school personnel.

570: Change number to 505, and prerequisites to following: EDCE 405AB and admission to a degree or credential program or employment as a counselor.

EDUCATIONAL ADMINISTRATION

MODIFIED PROGRAM:

Master of Arts Degree in Educational Administration
(page 508)

(formerly Master of Arts Degree in Education: Option in Educational Administration)

The program remains as listed in the 1983/84 catalog except for the following area of concentration:

SCHOOL BUSINESS ADMINISTRATION

Required in Educational Administration (12-21 units):

EDAD 533 (3) EDAD 554 (3)
EDAD 543 (3) EDAD 584ABCD
(3-12)

Electives (6-11 units):

(no change in course selections)

ELEMENTARY EDUCATION

MODIFIED PROGRAM:

Master of Arts Degree: Option in Elementary Teaching (page 523)

The program remains as listed in the 1983/84 catalog except for the following area of concentration:

V. MATHEMATICS EDUCATION (33 units):

Required (12 units):

EDEL 431, 432, 531

Select 13 units from following:

EDEL 433ABCD, 434B, 435, 480, 481, 580

Suggested electives (8 units):

EDEL 451, 551, 590; EDUC 526

Other electives may be selected with adviser approval.

Courses in Elementary Education (EDEL) (page 526)

NEW COURSE:

580 Evaluation of Microcomputer Courseware for Elementary Schools: Mathematics and Science (2)

Prerequisite: EDEL 480 or 481. Development of evaluation criteria for microcomputer courseware, based on research; application of these criteria to mathematics and science software marketed for elementary school use.

LIBRARY SCIENCE

Course in Library Science (LIBR) (page 528)

MODIFIED COURSE:

510 Instructional Materials in Multicultural Education (4)

Prerequisite: Teaching credential. Analysis of instructional materials relating to experiences of minority cultural groups in America; elementary and secondary materials considered. May be repeated to maximum of 8 units.

SECONDARY EDUCATION

Courses in Secondary Education (EDSE) (page 534)

NEW COURSES:

507 Adult Illiteracy (4)
(also listed as EDSP 507)

Nature of illiteracy among adults in the United States; impact of illiteracy upon career, social, and life stage development. Implications for program planning.

525 Instructional Materials in Secondary Schools: Computer Software (4)

Prerequisite: Teaching credential. Analysis of computer software relating to teaching of secondary school subjects.

SPECIAL EDUCATION

MODIFIED PROGRAM:

Master of Arts Degree in Special Education (page 536)

EDUCATION OF PHYSICALLY HANDICAPPED INDIVIDUALS

Required courses (8 units):
EDSP 502, 560

(no other changes in this option)

Courses in Special Education (EDSP) (page 544)

NEW COURSES:

507 Adult Illiteracy (4)
(also listed as EDSE 507)

Nature of illiteracy among adults in the United States; impact of illiteracy upon career, social, and life stage development. Implications for program planning.

560 Seminar: Education of Individuals with Physical Disabilities (4)

Prerequisite: EDSP 462. Identification and analysis of problems and current issues relating to the education of individuals with physical disabilities and those with multiple disabilities; review of research on specific disabilities.

MODIFIED COURSES:

503: Change units to 3-6.

568 Adaptive Living Skills for Exceptional Individuals (4)
(formerly EDSP 468)

Current issues and research in daily living and adaptive living skills for visually handicapped, deaf, physically and multihandicapped, including concept formation, spatial development, psychomotor skills, orientation and mobility.

SCHOOL OF ENGINEERING

Courses in Engineering
(ENGR) (page 551)

MODIFIED COURSES:

504, 505, 506: Change prerequisite ENGR 306 to ENGR 406.

FOREIGN LANGUAGES AND LITERATURES

MODIFIED PROGRAMS:

Master of Arts Degree in French

Admission to the Program

The GRE requirement has been deleted; applicants must have a 3.0 grade point average in all upper division French courses. (All other information remains the same.)

Master of Arts Degree in Spanish

Admission to the Program

Students seeking admission to this program must have either a minimum score of 500 on the GRE subject exam in Spanish or a 3.0 (B) grade point average in upper division Spanish courses. (All other information remains the same.)

HEALTH AND SAFETY STUDIES

Courses in Health and Safety Studies (H+S) (page 565)

NEW COURSE:

550 **Health and Safety Risk Management** (4)

Component analysis of health facility and industrial risk management programs; evaluation and implementation techniques

with review strategies. Data and functions for programs as integral part of quality assurance system.

HEALTH CARE MANAGEMENT

MODIFIED PROGRAM:

Master of Science Degree in Health Care Management (page 567)

Required courses (28 units):

MGMT 461, 470, 478, 501, 564, 576, 598
MGMT 595 or NURS 595
NURS 562, 564

(no other changes in this program)

INDUSTRIAL STUDIES

 (page 575)

The department office is located in Engineering and Industrial Studies A342.

LATIN AMERICAN STUDIES

MODIFIED PROGRAM:

Master of Arts Degree in Latin American Studies (page 578)

Departmental Requirements

LAS 497, formerly a prerequisite, is now corequisite to this program.

Language Requirement

Demonstration of written and oral competence in Spanish or Portuguese must precede advancement to candidacy.

Additional Seminars (19-20 units):

Add **POLS 527.
(no other changes in this program)

MATHEMATICS AND COMPUTER SCIENCE

MODIFIED PROGRAM:

Master of Science Degree in Mathematics (page 581)

The two options have different comprehensive examination topics, as indicated below.

Option 1: General Mathematics

Written comprehensive examinations must be passed in three of the following four areas: *topology*, *abstract algebra*, *complex analysis*, and *real analysis*.

Option 2: Applied Mathematics

Written comprehensive examinations must be passed in *applied linear analysis*, *calculus of variations*, *complex analysis*, and *numerical analysis*.

(All other information remains the same.)

MUSIC

MODIFIED PROGRAM:

Master of Arts Degree in Music

Option I: (page 587)

In *History and Literature*, 12 units are now required (because MUS 471-475 are all now 4-unit courses). In *Additional Electives*, 4-9 units are now required.

Option II:

In *History and Literature*, 12 units are now required (because MUS 471-475 are all now 4-unit courses). In *Electives in Music*, 8 units are now required.

NURSING

MODIFIED PROGRAM:

Master of Science Degree in Nursing (page 591)

In *Required Core*, delete H+S 540 and add NURS 594. In *Approved Electives*, add H+S 540. In *Clinical Specialty*, the following statement should appear after NURS 595:

* Must be taken with NURS 506, 520, and 542 and in quarter(s) following for a total of 12 units.

Courses in Nursing (NURS) (page 593)

NEW COURSE:

594 Advanced Study of Issues and Trends in Nursing (4)

Prerequisites: Classified standing and permission of instructor. Advanced study of the nursing profession's progress within a context of social criticism and change; designed to advance graduate student knowledge and conceptualization of nursing leadership and practice.

MODIFIED COURSES:

542: Change prerequisite to NURS 574.

595: Change units to 2-6.

DELETED COURSE:

548.

PHYSICAL EDUCATION AND RECREATION/ LEISURE STUDIES

MODIFIED PROGRAM:

Master of Arts Degree in Physical Education (page 597)

A change has occurred in the following areas of specialization.

EXERCISE SCIENCE

Required: P E 520

Select 3 courses from following:

P E 521, 522, 524, 528, 529, 532, 535, 536

ADAPTED PHYSICAL EDUCATION

This specialization has been deleted.



GENERAL PHYSICAL EDUCATION

Select 12–13 units in physical education, with adviser approval, from any area of specialization. Select 18–24 units of electives with adviser approval.

(no further changes in this program)

Courses in Physical Education (P E)**DELETED COURSES:**

533, 537.

POLITICAL SCIENCE**Courses in Political Science (POLS)** *(page 608)***MODIFIED COURSE:**

599: Delete the words “or project” from the title and description.

PSYCHOLOGY**MODIFIED PROGRAMS:**

Master of Arts Degree and Master of Science Degree in Psychology *(page 610)*

Departmental Requirements

All information remains the same except the following. Students who enter with the required academic preparation and grade point average must complete two seminars, but not within their first 16 units. PSY 555 should be added to the list of available seminars. These students must still complete PSY 411, 414, or 430 within their first 16 units.

Students whose grade point average and/or test score is below the minimum must complete PSY 555 and one of 411, 414, and 430, each with a B grade or higher, within their first 16 units.

The two degrees share a common core of psychology seminars, as follows:

PSY 500, 501, 502, 503, 506, 508, 510, 511, 522, 555. All students must complete two of these seminars except as explained above. All students must take one of PSY 411, 414, and 430.

Electives now comprise 29–35 units of the M.A. degree program including 2–5 units of PSY 597 and/or 598, determined with adviser, plus 24–33 units of courses approved by adviser.

Electives in the M.S. program (26–36 units) include 2–5 units of PSY 597 and/or 598, plus 21–34 additional units, all selected with adviser approval. In *Required Field Study*, students must take PSY 585 (4-4-4) or PSY 595 (4-4) for a total of 8–12 units.

Comprehensive examination and thesis requirements remain the same except that a *project* is no longer allowed.

(no other changes in this program)

Courses in Psychology (PSY) *(page 612)***NEW COURSES:****528 Seminar: Behavior Modification (4)**

Prerequisite: PSY 424A or 428; PSY 417 recommended. Basic theory and procedures in behavior modification including desensitization, token economies, biofeedback, and self control. Discussion of procedures for assessing the effectiveness of intervention.

555 Introduction to Graduate Study in Psychology (6)

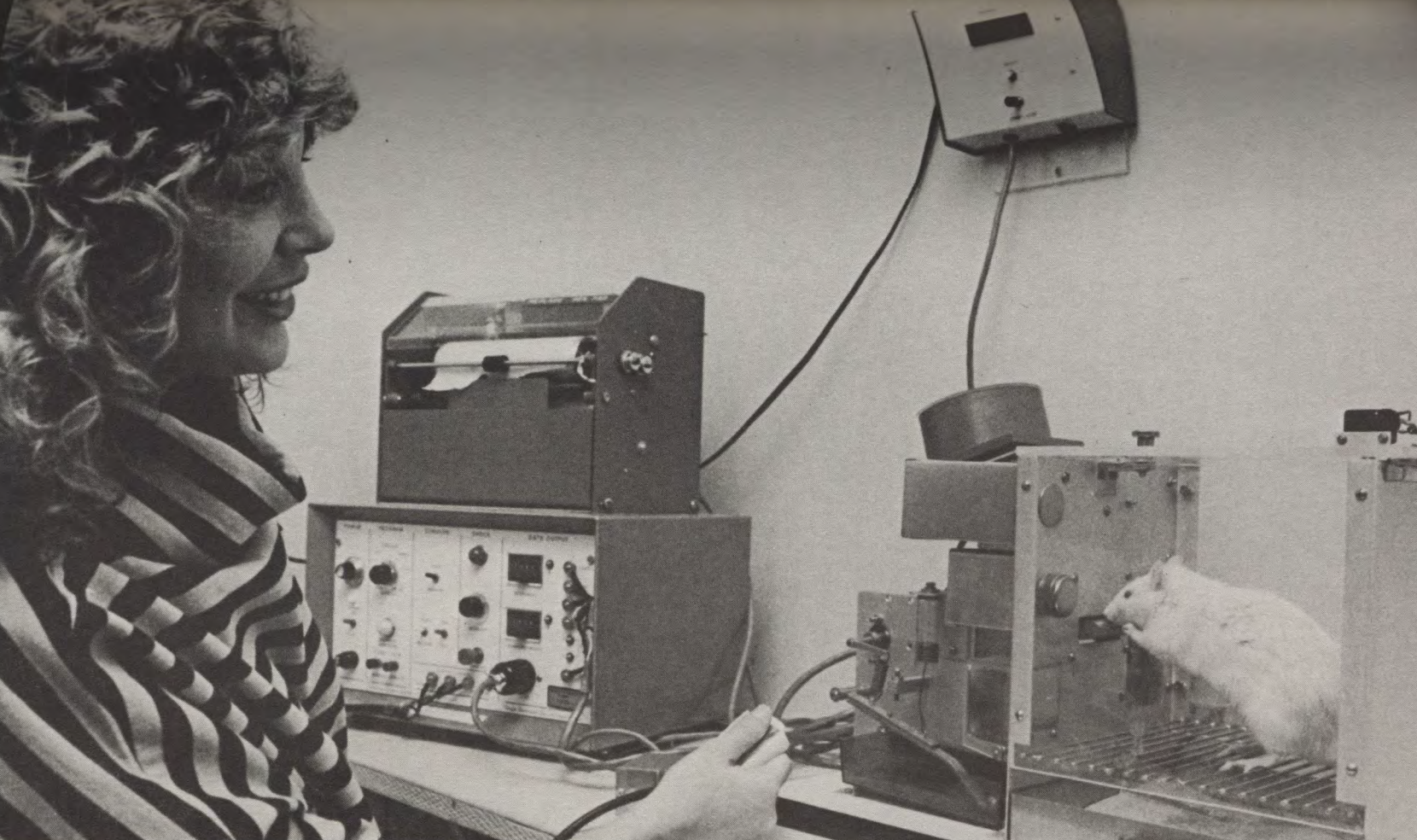
Prerequisites: PSY 304AB and 308. Critical evaluation of core areas in psychology including: learning perception, personality, physiological, social, and developmental psychology. Extensive use of bibliographic resources and oral and written presentations.

MODIFIED COURSE:

599: Delete the words “or project” from the title and description.

DELETED COURSES:

560, 561.





FULL-TIME FACULTY

Since publication of the 1983/84 catalog, the following persons have joined the University faculty.

- Dr. J. Theodore Anagnoson**, Associate Professor, Political Science
- Dr. Kofi Apenyo**, Associate Professor, Business Information Systems
- Mr. Derek Chang**, Assistant Professor, Mathematics and Computer Science
- Dr. Mary J. Collier**, Assistant Professor, Communication Studies
- Dr. Ricardo Gomez**, Associate Professor, Philosophy
- Ms. Joanne L. Gordon**, Assistant Professor, Theatre Arts
- Dr. Scott D. Grover**, Assistant Professor, Chemistry and Biochemistry
- Dr. Lih-Min Hsia**, Associate Professor, Mechanical Engineering
- Dr. David Y. Hsu**, Associate Professor, Mathematics and Computer Science
- Dr. Richard Kao**, Associate Professor, Marketing
- Dr. June A. Lester**, Associate Professor, Mathematics and Computer Science
- Mr. Henry R. Mendell**, Assistant Professor, Philosophy
- Dr. Pauline Mercado**, Assistant Professor, Counselor Education
- Mr. Orrin D. Moses**, Associate Professor, Accounting
- Dr. Emrah A. Orhun**, Associate Professor, Electrical Engineering
- Dr. Parviz Partow-Navid**, Associate Professor, Business Information Systems
- Dr. Robert G. Powell**, Assistant Professor, Communication Studies
- Dr. Edward H. Rezayi**, Assistant Professor, Physics and Astronomy
- Mr. Geoffrey F. Sanders**, Assistant Professor, Economics and Statistics
- Dr. Clement J. Savant, Jr.**, Professor, Electrical Engineering
- Dr. Wanda L. Stitt**, Associate Professor, Business Education and Office Administration
- Dr. James H. Wiebe**, Associate Professor, Elementary Education
- Dr. Chivey C. Wu**, Assistant Professor, Mechanical Engineering



THE CALIFORNIA STATE UNIVERSITY

(page 676)

Enrollments in fall 1983 totaled more than 315,000 students who were taught by a faculty of 18,500. Last year the system awarded more than 50 percent of the bachelor's degrees and 30 percent of the master's degrees granted in California. More than 900,000 persons have been graduated from the 19 campuses since 1960.

APPENDICES

Appendix B (page 685)

DETERMINATION OF RESIDENCE FOR NONRESIDENT TUITION PURPOSES

The campus Admissions Office determines the residence status of all new and returning students for nonresident tuition purposes. Responses to items 29–45 on the *application for admission* and, if necessary, other evidence furnished by the student are used in making this determination. A student who fails to submit adequate information to establish a right to classification as a California resident will be classified as a nonresident.

The following statement of the rules regarding residence determination for nonresident tuition purposes is not a complete discussion of the law, but a summary of the principal rules and their exceptions. The law governing residence determination for tuition purposes by The California State University is found in *Education Code* Sections 68000–68090, 68121, 68123, 68124, 89705–89707.5, and 90408, and in Title 5 of the *California Administrative Code*, Sections 41900–41912. A copy of the statutes and regulations is available for inspection at the campus Admissions Office.

Legal residence may be established by an adult who is physically present in the state and who, at the same time, intends to make California his or her permanent home. Steps must be taken at least one year prior to the residence determination date to show an intent to make California the permanent home with concurrent relinquishment of the prior legal residence. The steps necessary to show California residence intent will vary from case to case. Included among the steps may be registering to vote and voting in elections in California; filing resident California state income tax forms on total income; ownership of residential property or continuous occupancy or renting of an apartment on a lease basis where one's permanent belongings are kept; maintaining active resident memberships in California professional or social organizations; maintaining California vehicle plates and operator's license; maintaining active savings and checking accounts in California banks; maintaining permanent military address and home of record in California if one is in the military service.

The student who is within the state for educational purposes only does not gain the status of resident regardless of the length of the student's stay in California.

In general, the unmarried minor (a person under 18 years of age) derives legal residence from the parent with whom the minor maintains his or her place of abode. The residence of a minor cannot be changed by the minor or the minor's guardian, so long as the minor's parents are living.

A married person may establish his or her residence independent of spouse.

An adult alien may establish his or her residence, unless precluded by the Immigration and Nationality Act from establishing domicile in the United States.

Nonresident students seeking reclassification are required by law to complete a supplemental questionnaire concerning financial independence.

The general rule is that a student must have been a California resident for at least one year immediately preceding the residence determination date in order to qualify as a "resident student" for tuition purposes. A residence determination date is set for each academic term and is the date from which residence is determined for that term. The residence determination dates for 1984-85 academic year are:

Fall Quarter	September 20
Winter Quarter	January 5
Spring Quarter	April 1
Summer Quarter	July 1

Questions regarding residence determination dates should be directed to the campus Admissions Office which can give you the residence determination date for the term for which you are registering.

There are exceptions from nonresident tuition, including:

1. Persons below the age of 19 whose parents were residents of California but who left the state while the student, who remained, was still a minor. When the minor reaches age 18, the exception continues for one year to enable the student to qualify as a resident student.
2. Persons who have been present in California with the intent of acquiring residence for more than a year before the residence determination date, and entirely self-supporting for that period of time.
3. Persons below the age of 19 who have lived with and been under the continuous direct care and control of an adult, not a parent, for the two years immediately preceding the residence determination date. Such adult must have been a California resident for the most recent year.
4. Dependent children and spouses of persons in active military service stationed in California on the residence determination date. This exception applies only for the minimum time required for the student to obtain California residence and maintain that residence for a year. The exception, once attained, is not affected by retirement or transfer of the military person outside the state.
5. Military personnel in active service stationed in California on the residence determination date for purposes other than education at state-supported institutions of higher education. This exception applies only for the minimum time required for the student to obtain California residence and maintain that residence for a year.
6. Certain credentialed, full-time employees of California school districts.
7. Full-time California State University employees and their children and spouses. This exception applies only for the minimum time required for the student to obtain California residence and maintain that residence for one year.
8. Certain exchange students.
9. Children of deceased public law enforcement or fire suppression employees, who were California residents, and who were killed in the course of law enforcement or fire suppression duties.

Any student, following a final campus decision about his or her residence classification, only may make written appeal to:

The California State University
Office of General Counsel
400 Golden Shore
Long Beach, California 90802

within 120 calendar days of notification of the final decision on campus of the classification. The Office of General Counsel may make a decision on the issue, or it may send the matter back to the campus for further review. Students classified incorrectly as residents or incorrectly granted an exception from nonresident tuition are subject to reclassification as nonresidents and payment of nonresident tuition in arrears. If incorrect classification results from false or concealed facts, the student is subject to discipline pursuant to Section 41301 of Title 5 of the *California Administrative Code*. Resident students who become nonresidents, and nonresident students qualifying for exceptions whose basis for so qualifying changes, must immediately notify the Admissions Office. Applications for a change in classification with respect to a previous term are not accepted.

The student is cautioned that this summation of rules regarding residence determination is by no means a complete explanation of their meaning. The student should also note that changes may have been made in the rate of nonresident tuition, in the statutes, and in the regulations between the time this catalog is published and the relevant residence determination date.



Appendix C (page 688)**AVERAGE ANNUAL COST OF EDUCATION AND SOURCES OF FUNDS PER FULL-TIME EQUIVALENT STUDENT**

The 19 campuses and the Chancellor's Office of The California State University are financed primarily through funding provided by the taxpayers of California. The total State appropriation to the CSU for 1983/84, including capital outlay, is \$929,650,300. The total cost of education for the CSU, however, is \$1,199,787,540 which provides support for a projected 242,460 full-time equivalent (FTE) students.

The total cost of education in the CSU is defined as the expenditures for current operations, including payments made to the students in the form of financial aid, including all fully reimbursed programs contained in State appropriations, but excluding capital outlay appropriations. The average cost of education is determined by dividing the total cost by the total FTE's. The average cost is further differentiated into three categories: *State support* (the State appropriation, excluding capital outlay), *student fee support*, and *support from other sources* (including federal funds).

Thus, excluding costs that relate to capital outlay (e.g., building amortization), the average cost of education per FTE student is \$4,948. Of this amount, the average student fee support per FTE is \$1,006. The calculation for this latter amount includes the amount paid by nonresident students.

**SOURCE OF FUNDS AND AVERAGE COSTS
FOR 1983/84 CSU BUDGET
(PROJECTED ENROLLMENT: 242,460 FTE)**

	<i>Amount</i>	<i>Average Cost Per Student (FTE)^a</i>	<i>Percentage</i>
Total Cost of Education	\$1,199,787,540 ^b	4,948	100.0
—State Appropriation	916,291,300 ^c	3,779	76.4
—Student Fee Support	243,896,427	1,006 ^d	20.3
—Support from Other Sources	39,599,813	163	3.3

^a For budgetary purposes, full-time equivalent (FTE) translates total head count into total academic student load equivalent to 15 units per term. Some students enroll for more than 15 units; some students enroll for fewer than 15 units.

^b The total cost of education does not include the amount related to the capital investment of the CSU. The estimated replacement cost of all the system's permanent facilities and equipment on the 19 campuses is currently valued at \$4.4 billion, excluding the cost of land.

^c This figure does not include the capital outlay appropriation of \$13,359,000.

^d The average costs paid by a student include the *State University fee, student services fee, application fee, catalog fee and nonresident tuition*. Individual students may pay less than \$1,006 depending on whether they are part-time, full-time, resident, or nonresident students.

Appendix E (page 692)

PRIVACY RIGHTS OF STUDENTS IN EDUCATION RECORDS

The federal Family Educational Rights and Privacy Act of 1974 (20 U.S.C. 1232g) and regulations adopted thereunder (45 C.F.R. 99) and California *Education Code* Section 67100 et seq., set out requirements designed to protect the privacy of students concerning their records maintained by the campus. Specifically, the statute and regulations govern access to student records maintained by the campus, and the release of such records. In brief, the law provides that the campus must provide students access to records directly related to the student, and an opportunity for a hearing to challenge such records on the grounds that they are inaccurate, misleading, or otherwise inappropriate. The right to a hearing under the law does not include any right to challenge the appropriateness of a grade as determined by the instructor. The law generally requires that written consent of the student be received before releasing personally identifiable data about the student from records to other than a specified list of exceptions.

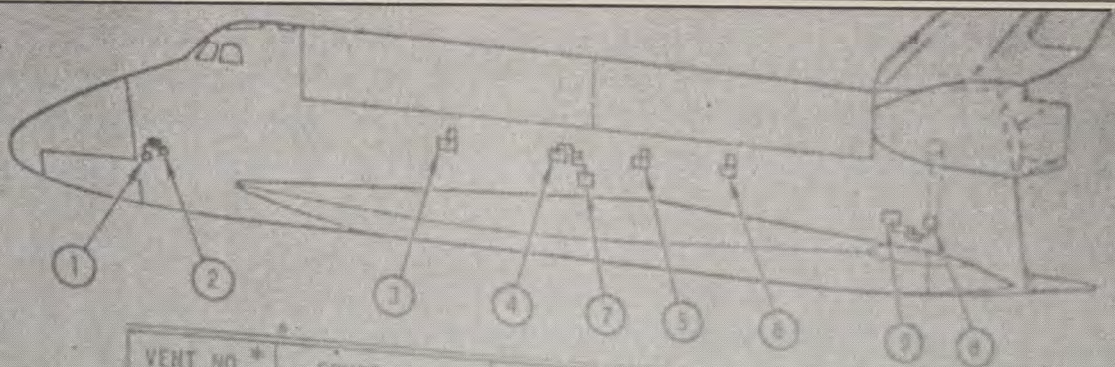
Cal State L.A. has adopted a set of policies and procedures concerning implementation of the statutes and regulations on the campus. Copies of these policies and procedures may be obtained at the Dean of Students Office, Hlth Ctr 220. Among the types of information included in the campus statement of policies and procedures are: 1) the types of student records and the information contained therein; 2) the official responsible for the maintenance of each type of record; 3) the location of access lists that indicate persons requesting or receiving information from the record; 4) policies for reviewing and expunging records; 5) the access rights of students; 6) the procedures for challenging the content of student records; 7) the cost that will be charged for reproducing copies of records; and 8) the right of the student to file a complaint with the Department of Education. An office and review board have been established by the department to investigate and adjudicate violations and complaints. The office designated for this purpose is: The Family Educational Rights and Privacy Act Office (FERPA), U.S. Department of Education, 330 "C" Street, Room 4511, Washington, D.C. 20202.

Cal State L.A. is authorized under the act to release "*directory information*" concerning students. "*Directory information*" includes the student's name, address, telephone listing, date and place of birth, major field of study, participation in officially recognized activities and sports, weight and height of members of athletic teams, dates of attendance, degrees and awards received, and the most recent previous educational agency or institution attended by the student. The above designated information is subject to release by the campus at any time unless the campus has received prior written objection from the student specifying information which the student requests not be released. Written objections should be sent to the Dean of Students Office.

Cal State L.A. is authorized to provide access to student records to campus officials and employees who have legitimate educational interests in such access. These persons are those who have responsibilities in connection with the campus' academic, administrative, or service functions and who have reason for using student records connected with their campus or other related academic responsibilities.







VENT NO.*	COMPT VENTED	VENT DOOR SUBSYSTEM	ACTUATION
1	FWD RCS	FORWARD	COUPLED TORQUE TUBES SINGLE ACTUATOR
2	FWD FUS	FORWARD	COUPLED TORQUE TUBES SINGLE ACTUATOR
7	WING	FORWARD	COUPLED TORQUE TUBES SINGLE ACTUATOR
4	MID	FORWARD	COUPLED TORQUE TUBES SINGLE ACTUATOR
3	MID	FORWARD	COUPLED TORQUE TUBES SINGLE ACTUATOR
5	MID	FORWARD	COUPLED TORQUE TUBES SINGLE ACTUATOR
6	MID	FORWARD	COUPLED TORQUE TUBES SINGLE ACTUATOR
8	MID	FORWARD	COUPLED TORQUE TUBES SINGLE ACTUATOR
9	AFT	AFT	COUPLED TORQUE TUBES SINGLE ACTUATOR

* LH AND RH

Rockwell
International

Cal State L.A.



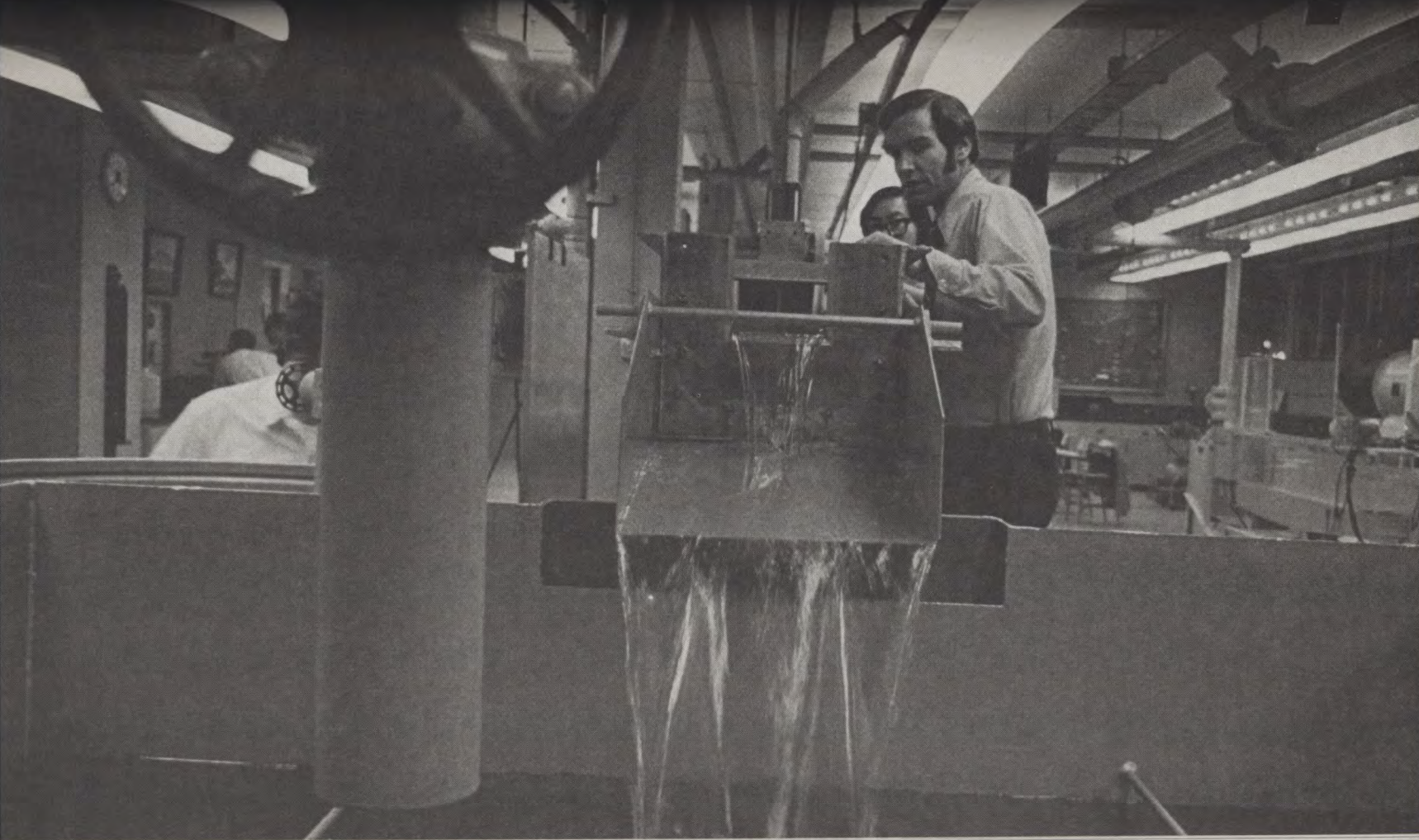


Students in the Youth Agency Administration program gain administrative skills needed for leadership careers in youth and human services agencies.



Cal State L.A.'s Engineering students compete against students from numerous other universities each year in their campus-built, off-road vehicle in the Mini-Baja race, and frequently win first place.









Cal State L.A.'s largest scholarship fundraiser is the annual Angel/Dodger Wives Softball Classic, sponsored by the Development Board.

Academic Structure of the University

Effective Fall 1984

School of Arts and Letters

Division of Arts

Art
Music
Theatre Arts

Division of Letters

Communication Studies
English and American Studies
Foreign Languages and Literatures
Liberal Studies
Philosophy

School of Engineering and Technology

Civil Engineering
Electrical and Computer Engineering
Mechanical Engineering
Technology

School of Business and Economics

Accounting
Business Education and Office Administration
Business Information Systems
Economics and Statistics
Finance and Law
* Health Care Management
Management
Marketing

School of Education

Counselor Education
Educational Administration
Educational Foundations
Elementary Education
Secondary Education
Special Education

School of Health and Human Services

Division of Human Services

* Child Development
Home Economics
Physical Education and
Recreation/Leisure Studies
Public Safety
Social Work

Division of Nursing and Allied Health

Communication Disorders
Health Studies
Nursing

Associated Clinics

School of Natural, Behavioral, and Social Sciences

Division of Natural Sciences

Biology
Chemistry and Biochemistry
Geology
Mathematics and Computer
Science
Microbiology
Physics and Astronomy

Division of Behavioral and Social Sciences

Anthropology
Chicano Studies
Geography and Urban Studies
History
Latin American Studies
Pan-African Studies
Political Science
Psychology
Sociology

* The permanent location of this interdisciplinary program had not been determined at the time of publication of this bulletin





California State University, Los Angeles
5151 State University Drive
Los Angeles, California 90032

\$1.00 plus tax