



# Faculty Fact Sheet

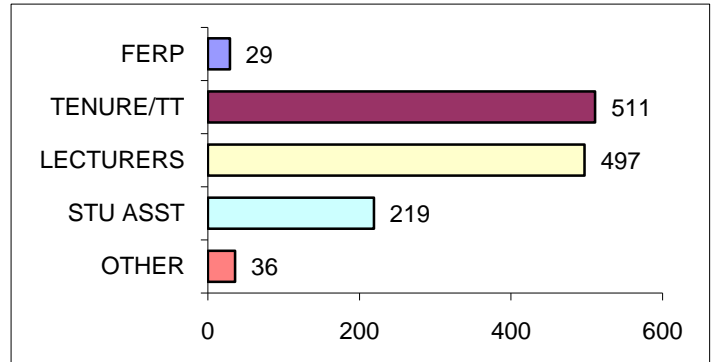
# # 51

FOR INFORMATION REGARDING CONTENT, PLEASE CALL (323) 343-2730

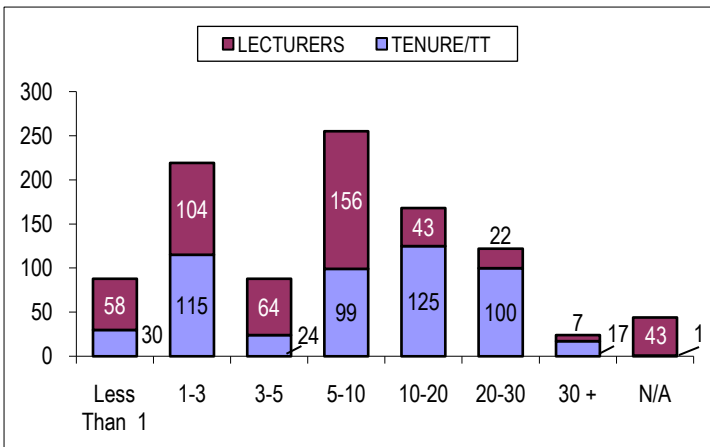
PREPARED BY THE OFFICE OF INSTITUTIONAL RESEARCH

This fact sheet contains an assortment of quantitative information pertaining to Cal State L.A. instructionally related personnel (including all faculty, librarians, coaches, and student academic employees). The total Fall 2010 count for these employees was 1,292. To avoid double counting individuals, each faculty member who had more than one assignment was counted based on the "primary assignment."

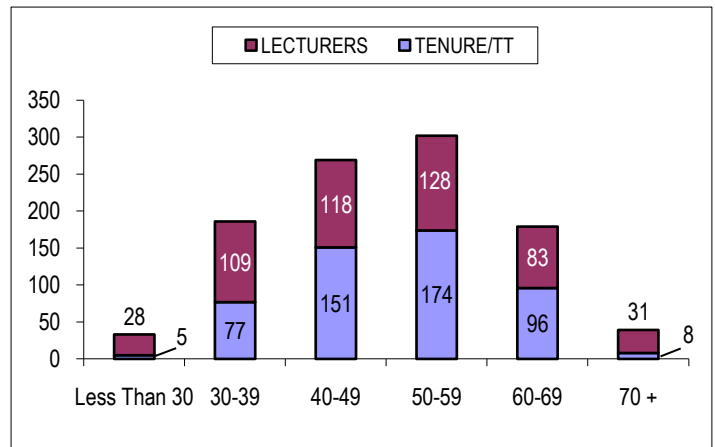
OVERALL COUNTS BY INSTRUCTOR GROUP



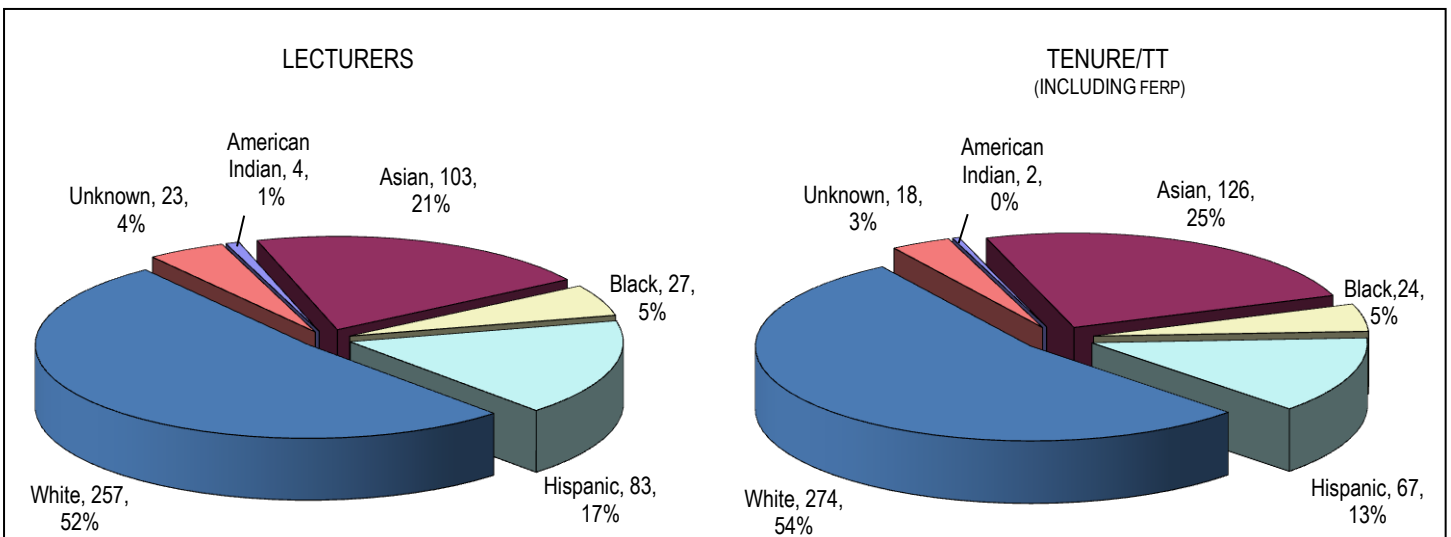
FACULTY COUNTS BY LENGTH OF SERVICE



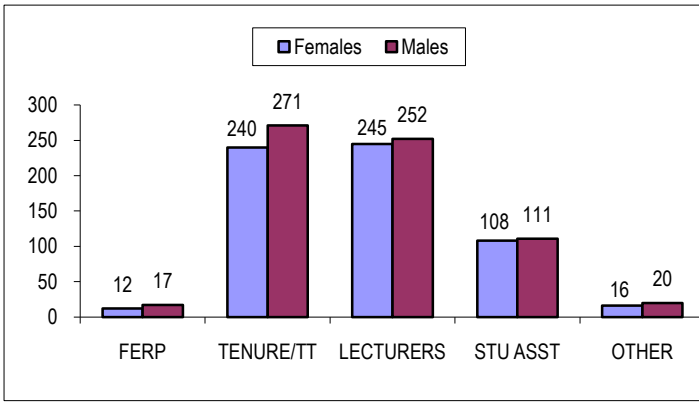
FACULTY COUNTS BY AGE GROUP



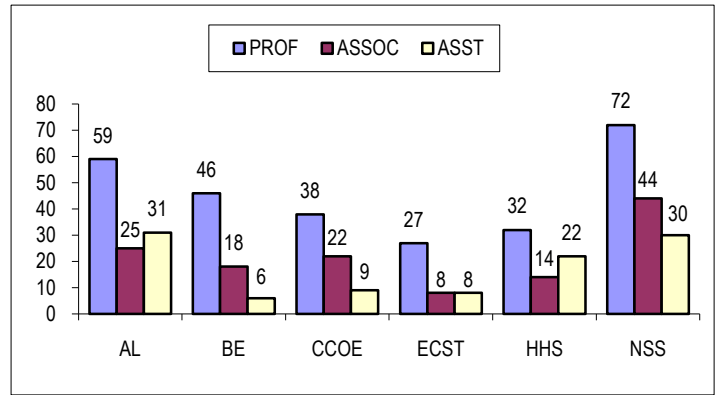
FACULTY COUNTS BY ETHNICITY



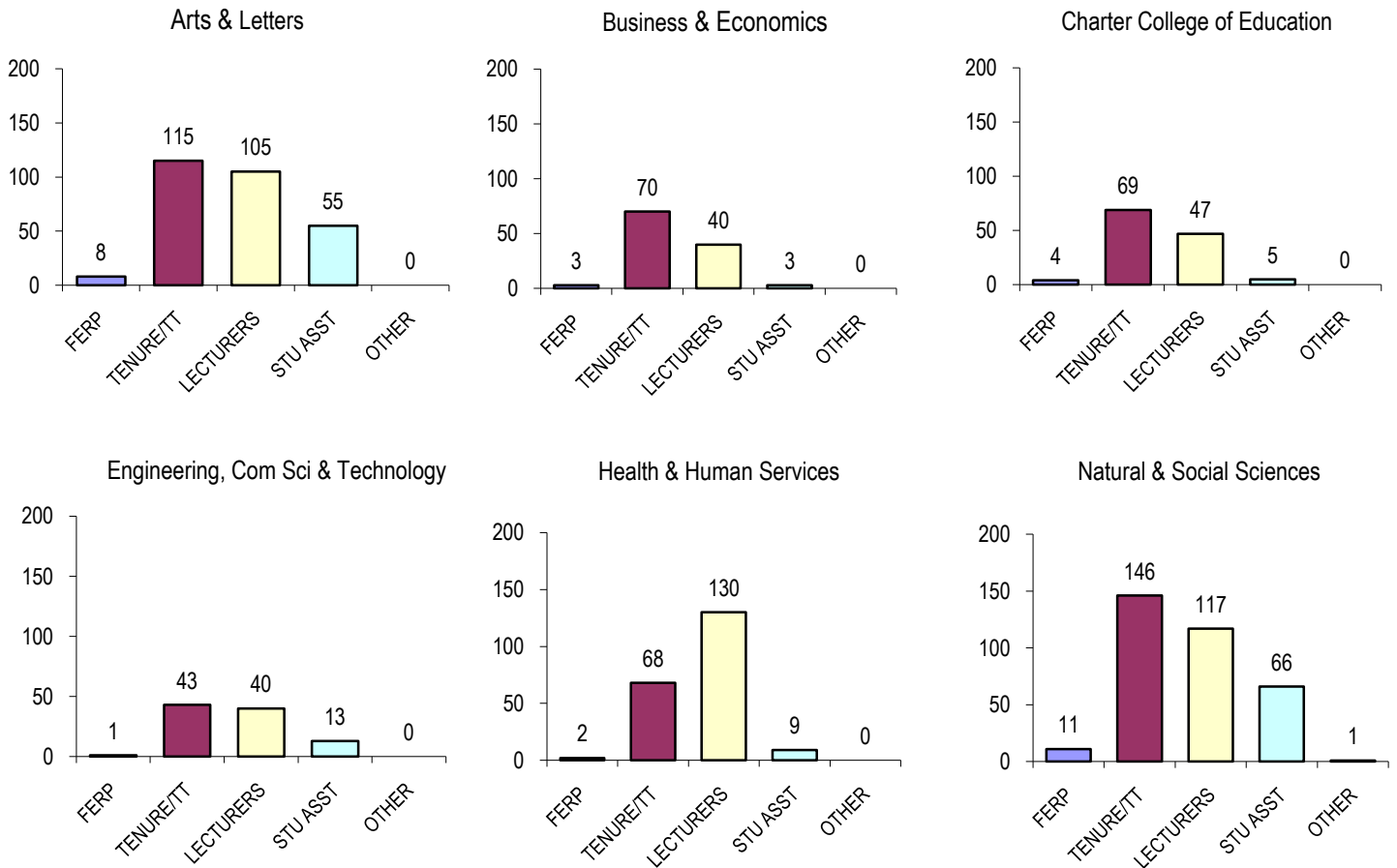
**FACULTY COUNTS BY GENDER**



**TENURE/TT RANK BY COLLEGE**



**PRIMARY ASSIGNMENT HEADCOUNTS BY COLLEGE**



**FULL TIME EQUIVALENT FACULTY BY COLLEGE**

GROUP	AL	BE	CCOE	ECST	HHS	NSS	LIB	OTH <sup>1</sup>	TOTAL
FERP	4.7	2.0	2.2	1.0	1.1	7.8	0.0	0.0	18.9
TENURE/TT	114.2	70.0	69.0	42.3	68.3	146.3	0.0	0.0	510.0
LECTURERS	55.2	20.0	13.9	12.9	64.0	61.4	0.0	9.7	237.1
STUDENT	18.7	1.5	1.5	3.0	3.2	22.2	0.0	33.7	83.7
OTHER	0.0	0.0	0.0	0.0	0.0	1.0	13.0	20.3	34.3
<b>Grand Total</b>	<b>192.8</b>	<b>93.5</b>	<b>86.6</b>	<b>59.2</b>	<b>136.6</b>	<b>238.6</b>	<b>13.0</b>	<b>63.6</b>	<b>884.0</b>
<b>FTES</b>	<b>3,611</b>	<b>2,013</b>	<b>1,333</b>	<b>932</b>	<b>2,767</b>	<b>5,376</b>		<b>119</b>	<b>16,151</b>
<b>MAJORS</b>	<b>2,839</b>	<b>3,231</b>	<b>1,712</b>	<b>1,891</b>	<b>5,527</b>	<b>4,210</b>		<b>732<sup>2</sup></b>	<b>20,142</b>

1. Not affiliated with a college. 2. Consists primarily of "Undeclared".