



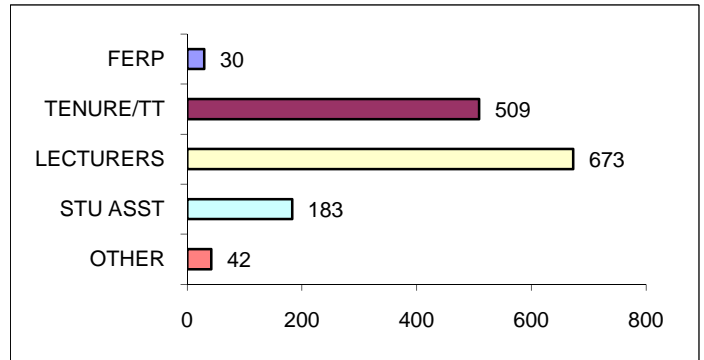
Faculty Fact Sheet

FOR INFORMATION REGARDING CONTENT, PLEASE CALL (323) 343-2730

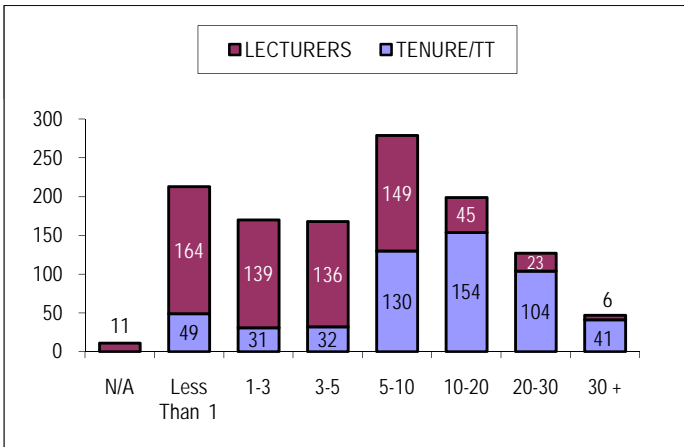
PREPARED BY THE OFFICE OF INSTITUTIONAL RESEARCH

This fact sheet contains an assortment of quantitative information pertaining to Cal State L.A. instructionally related personnel (including all faculty, librarians, coaches, and academic student employees). The total Fall 2008 count for these employees was **1,437**. To avoid double counting individuals, each faculty member who had more than one assignment was counted based on the "primary assignment."

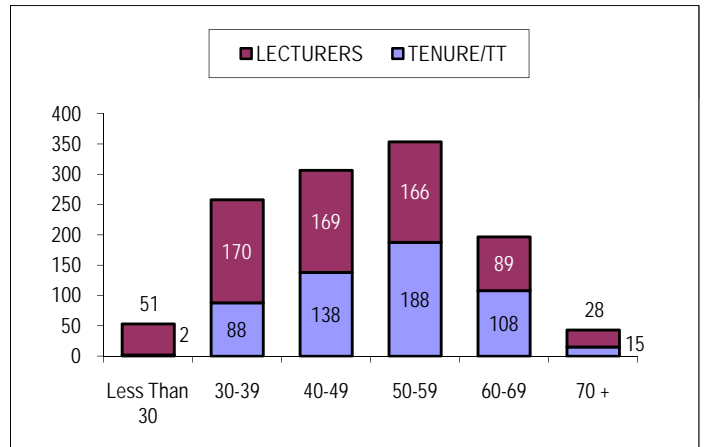
OVERALL COUNTS BY FACULTY



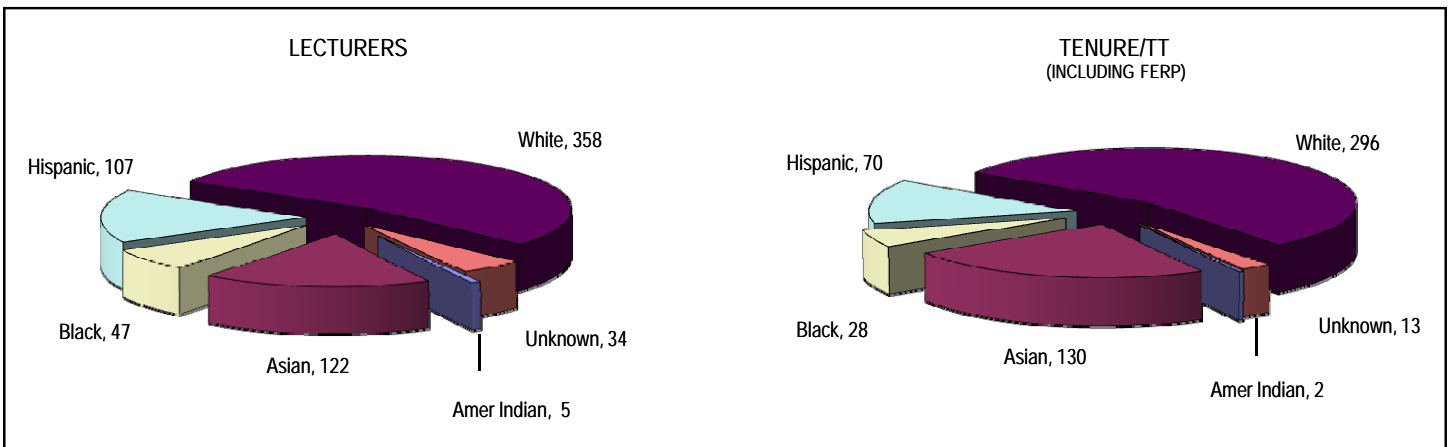
FACULTY COUNTS BY LENGTH OF SERVICE



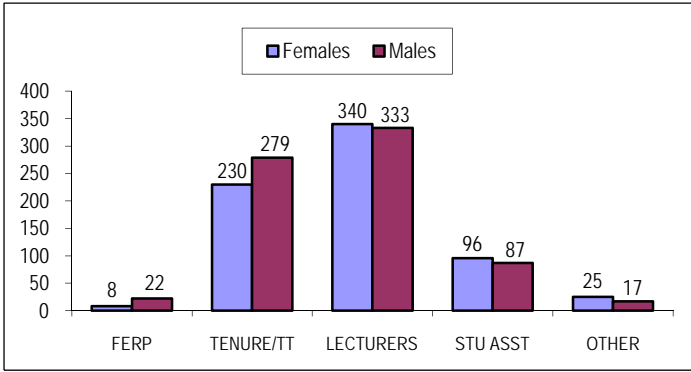
FACULTY COUNTS BY AGE GROUP



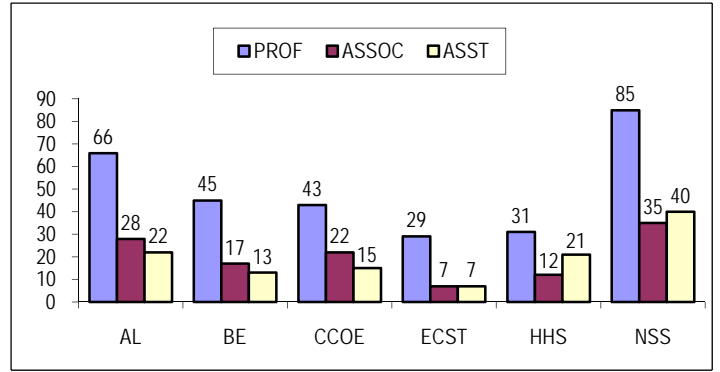
FACULTY COUNTS BY ETHNICITY



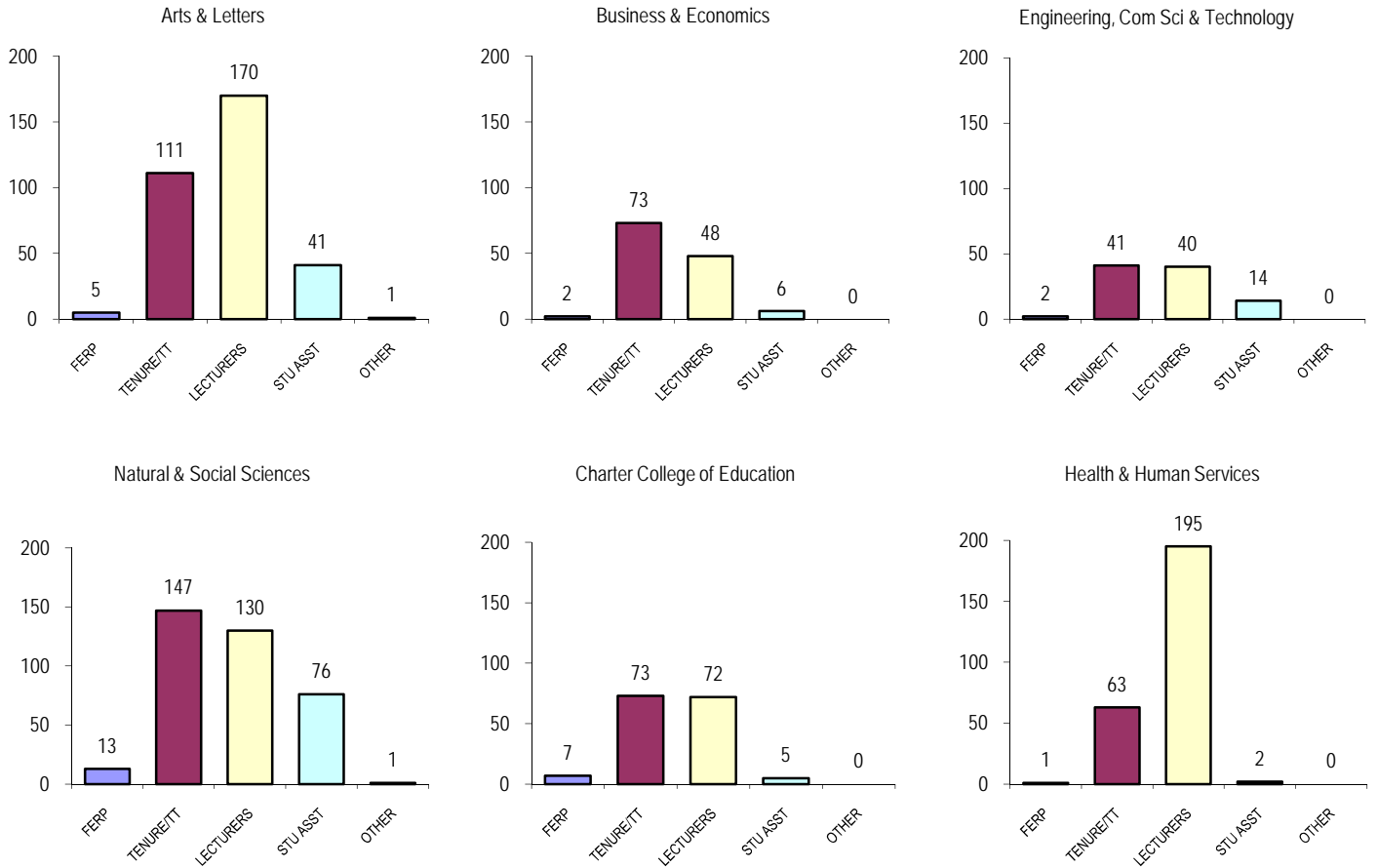
FACULTY COUNTS BY GENDER



TENURE/TT RANK BY COLLEGE



PRIMARY ASSIGNMENT COUNTS BY COLLEGE



FULL TIME EQUIVALENT FACULTY BY COLLEGE

GROUP	AL	BE	CCOE	ECST	HHS	LIB	NSS	OTH ¹	TOTAL
FERP	3.9	1.3	4.1	2.0	0.4		8.7	0.0	20.4
TENURE/TT	110.9	72.3	72.6	41.3	62.8		145.2	1.0	506.1
LECTURERS	83.1	24.1	23.7	13.5	88.8		76.1	9.3	318.6
STUDENT	15.1	2.5	1.7	4.6	0.7		26.7	18.7	70.0
OTHER	1	0.0	0.0	0.0	0.0	14.4	1.0	16.4	32.8
Grand Total	214	100.2	102.1	61.4	152.7	14.4	257.7	45.4	947.9
FTES	3,734	2,195	1,541	845	2,783		5,248	136	16,297³
MAJORS	2,916	3,496	2,029	1,805	5,040		4,070	1,387²	20,743

1. Not affiliated with a college. 2. Consists primarily of "Undeclared". 3. Official total from ERSS.