



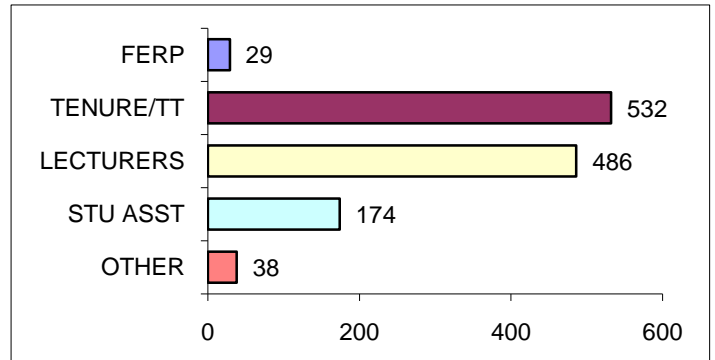
Faculty Fact Sheet

FOR INFORMATION REGARDING CONTENT, PLEASE CALL (323) 343-2730

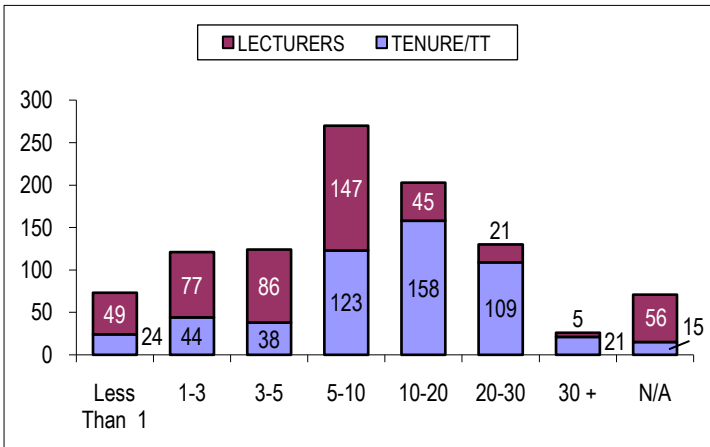
PREPARED BY THE OFFICE OF INSTITUTIONAL RESEARCH

This fact sheet contains an assortment of quantitative information pertaining to Cal State L.A. instructionally related personnel (including all faculty, librarians, coaches, and academic student employees). The total Fall 2009 count for these employees was 1,259. To avoid double counting individuals, each faculty member who had more than one assignment was counted based on the "primary assignment."

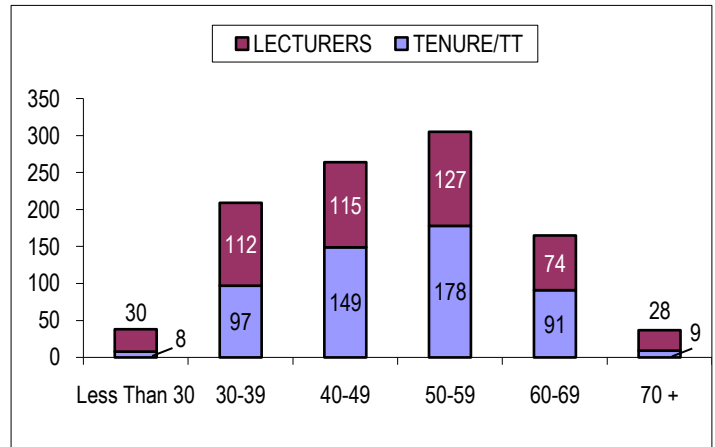
OVERALL COUNTS BY INSTRUCTOR GROUP



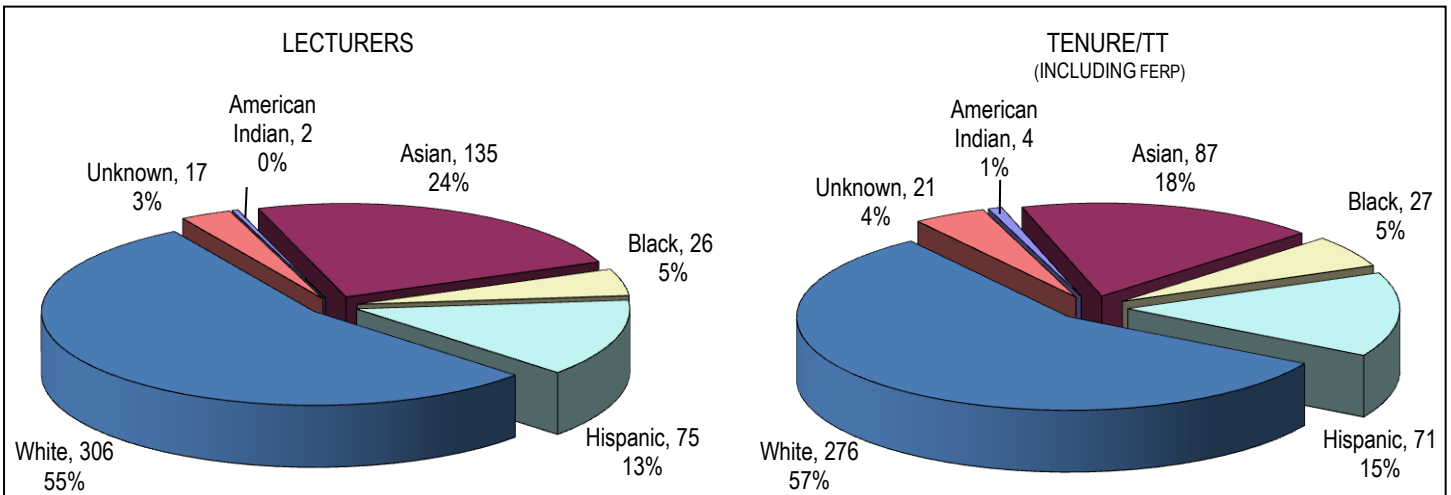
FACULTY COUNTS BY LENGTH OF SERVICE



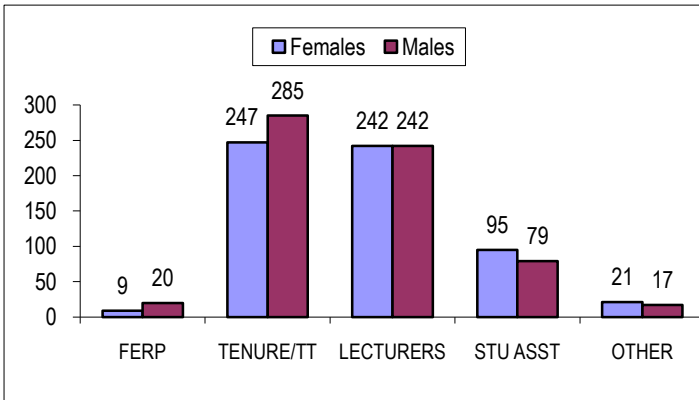
FACULTY COUNTS BY AGE GROUP



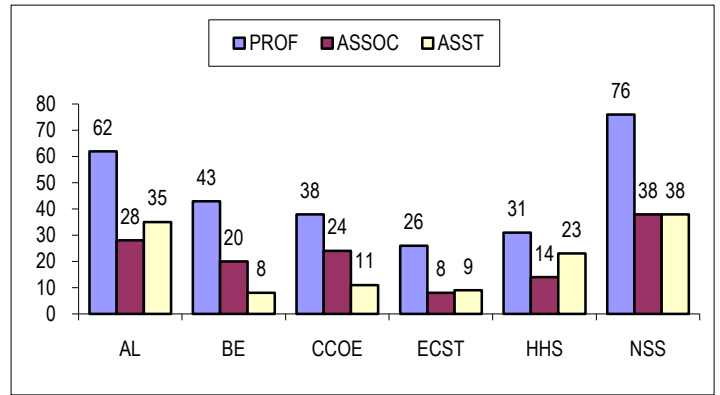
FACULTY COUNTS BY ETHNICITY



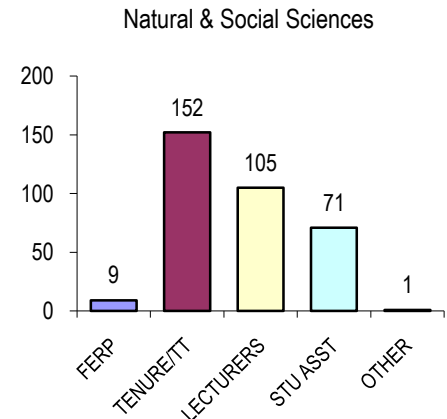
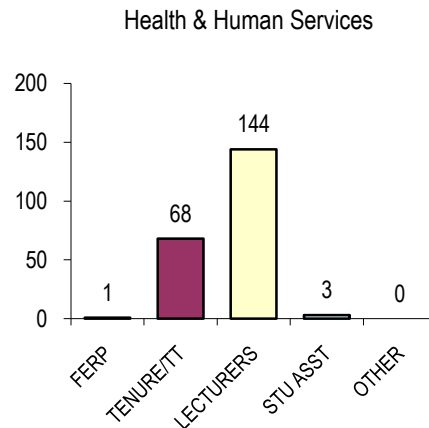
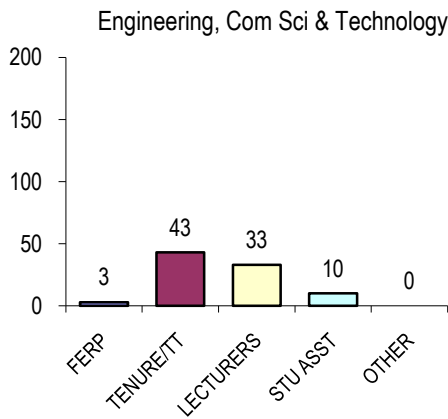
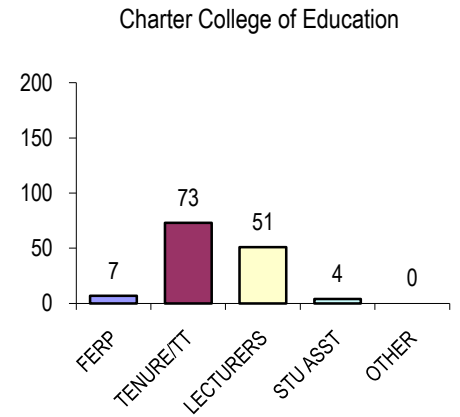
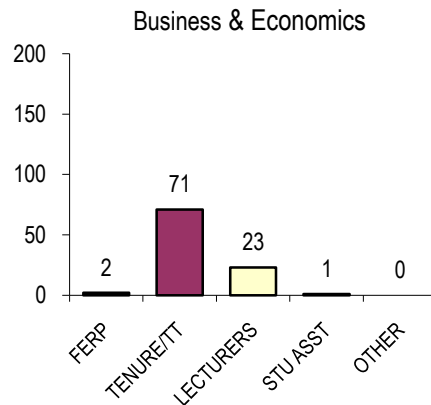
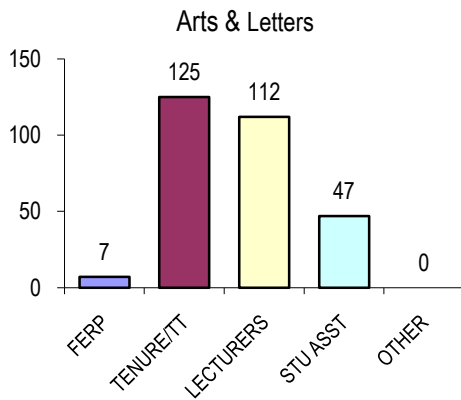
FACULTY COUNTS BY GENDER



TENURE/TT RANK BY COLLEGE



PRIMARY ASSIGNMENT HEADCOUNTS BY COLLEGE



FULL TIME EQUIVALENT FACULTY BY COLLEGE

| GROUP | AL | BE | CCOE | ECST | HHS | NSS | LIB | OTH ¹ | TOTAL |
|--------------------|--------------|-------------|-------------|-------------|--------------|--------------|-------------|--------------------|--------------|
| FERP | 4.5 | 1.2 | 4.1 | 2.5 | 0.4 | 6.3 | 0.0 | 0.0 | 19.0 |
| TENURE/TT | 124.6 | 71.0 | 73.0 | 43.3 | 68.3 | 151.2 | 0.0 | 0.0 | 531.4 |
| LECTURERS | 54.1 | 11.5 | 16.6 | 11.3 | 67.3 | 50.7 | 0.0 | 9.0 | 220.5 |
| STUDENT | 17.0 | 0.3 | 1.3 | 3.4 | 1.4 | 23.2 | 0.0 | 18.1 | 64.7 |
| OTHER | 0.0 | 0.0 | 0.0 | 0.0 | 0.0 | 1.0 | 15.0 | 20.7 | 36.7 |
| Grand Total | 200.2 | 84.0 | 95.0 | 60.5 | 137.4 | 232.4 | 15.0 | 47.8 | 872.3 |
| FTES | 3,944 | 1,961 | 1,523 | 902 | 2,658 | 4,887 | | 90 | 15,966 |
| MAJORS | 2,844 | 3,296 | 1,895 | 1,896 | 5,307 | 4,056 | | 1,325 ² | 20,619 |

1. Not affiliated with a college. 2. Consists primarily of "Undeclared".