



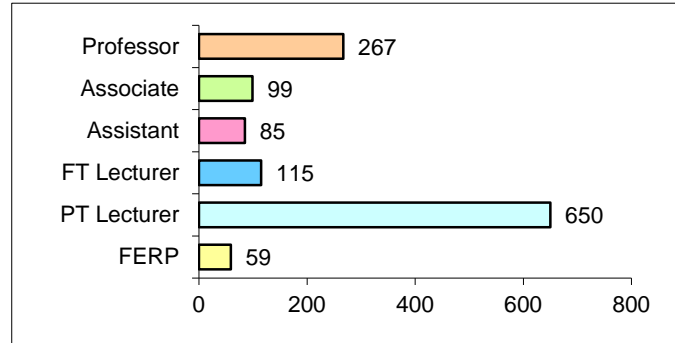
Faculty Fact Sheet

FOR INFORMATION REGARDING CONTENT, PLEASE CALL (323) 343-2730

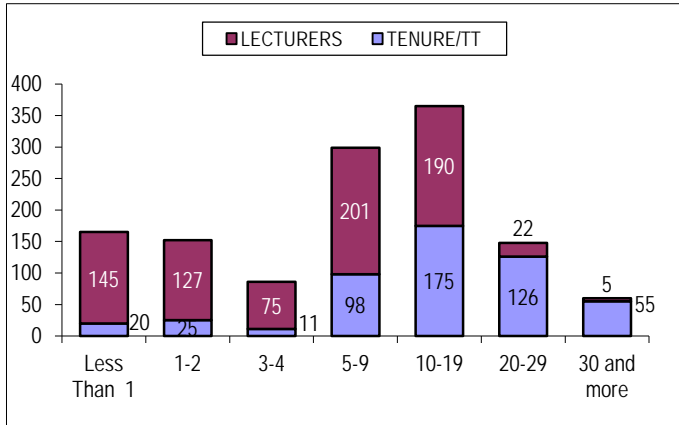
PREPARED BY THE OFFICE OF INSTITUTIONAL RESEARCH

This fact sheet contains an assortment of quantitative information pertaining to Cal State L.A. faculty (excluding librarians, coaches, and student academic employees). The total Fall 2014 count for these employees was 1275. To avoid double counting individuals, each faculty member who had more than one assignment was counted based on the "primary assignment." Full-time status of lecturers is based on their total FTE. Human Resource Management provided the data for this report.

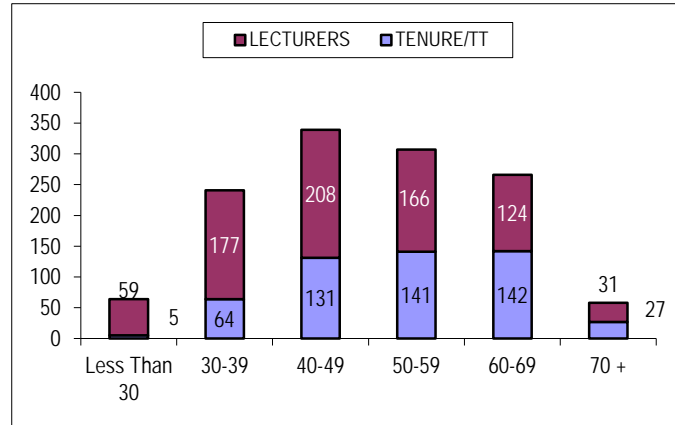
OVERALL COUNTS BY INSTRUCTOR GROUP



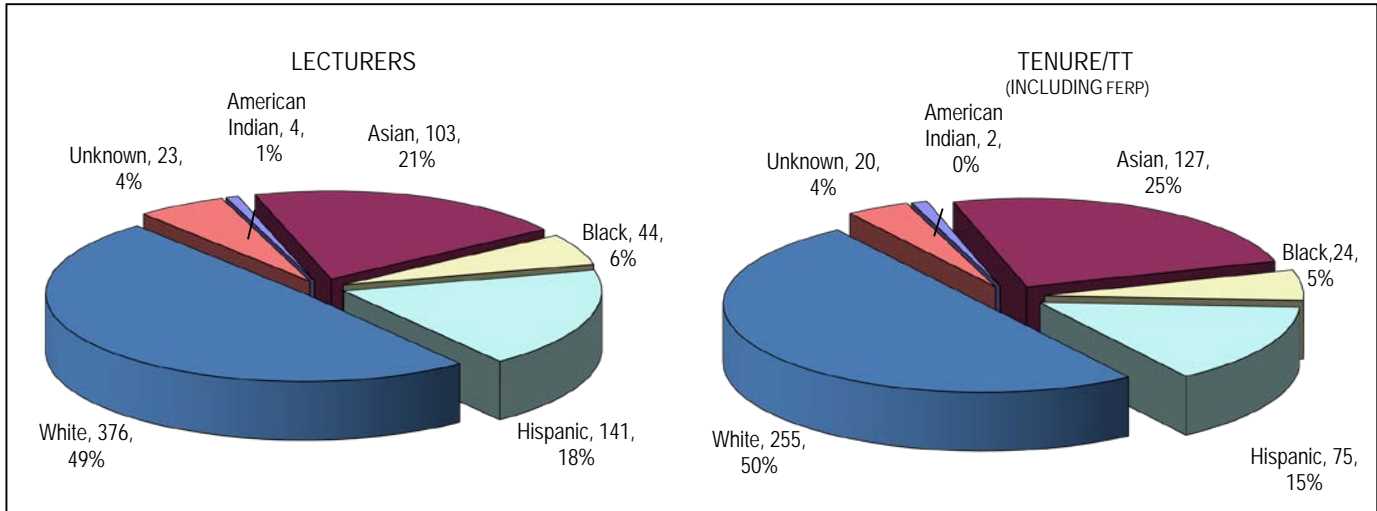
FACULTY COUNTS BY LENGTH OF SERVICE



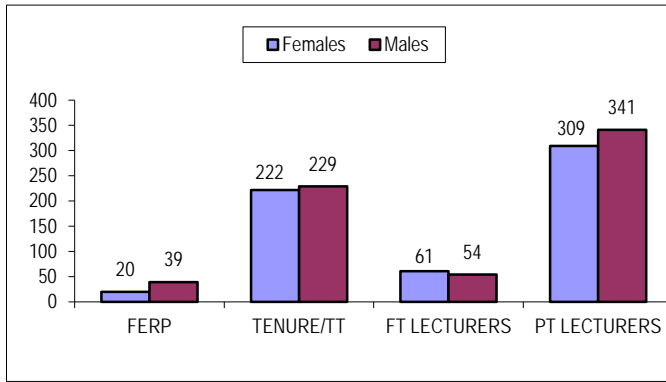
FACULTY COUNTS BY AGE GROUP



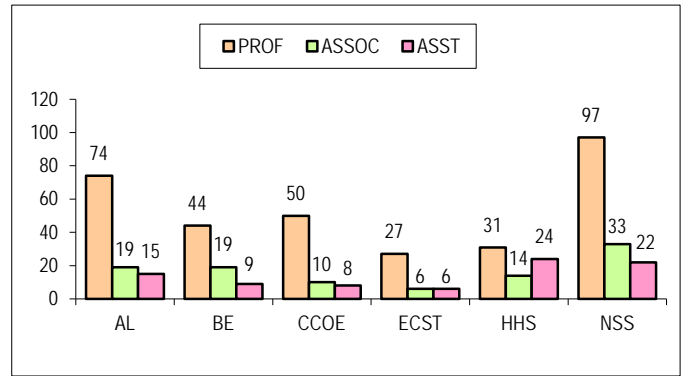
FACULTY COUNTS BY ETHNICITY



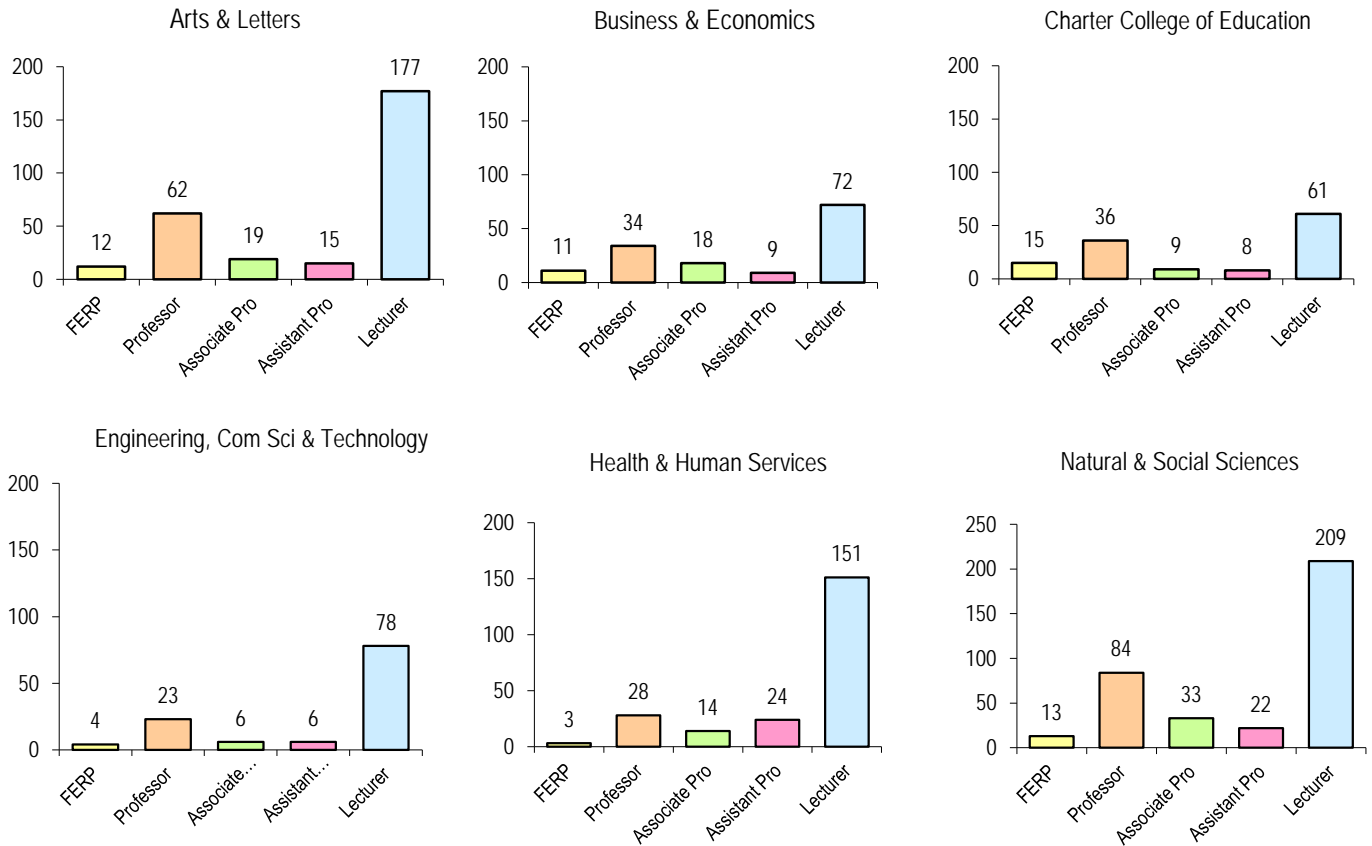
FACULTY COUNTS BY GENDER



TENURE/TT RANK BY COLLEGE



PRIMARY ASSIGNMENT HEADCOUNTS BY COLLEGE



FACULTY STATISTICS BY YEAR*

Year	FTES	FTEF	SFR	Full-time faculty count	Part-time faculty count	Total faculty count
2010	16169.2	708.8	22.8	556	495	1051
2011	17309.4	757	22.9	564	544	1108
2012	17632.8	757.5	23.3	560	539	1099
2013	18511.5	836.3	22.1	563	524	1087
2014	20417.4	901.9	22.6	580	707	1287

* Numbers were obtained from IPEDS and APDB. Graduate Assistants are included in FTEF but not in headcount