

# ***COVID Crisis Impact on Academic Momentum for Underrepresented Full-Loaders***

Sunny Moon, Suseon Yang, Yusuke Kuroki, Michelle Hawley

*California State University, Los Angeles*

CAIR Conference  
November 2023



**CAL STATE LA**  
CALIFORNIA STATE UNIVERSITY, LOS ANGELES

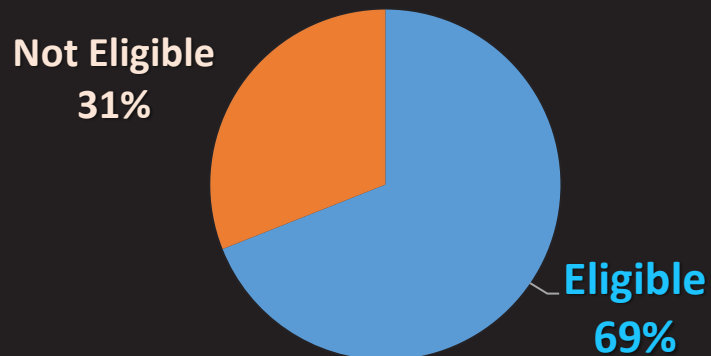


**CAL STATE LA**

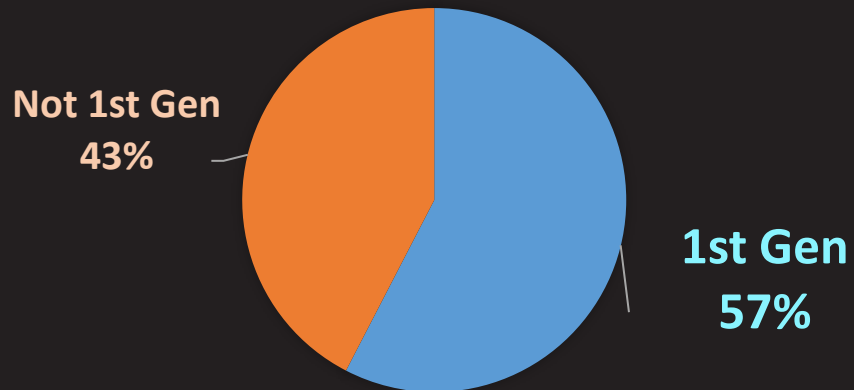
CALIFORNIA STATE UNIVERSITY, LOS ANGELES

## PELL ELIGIBILITY

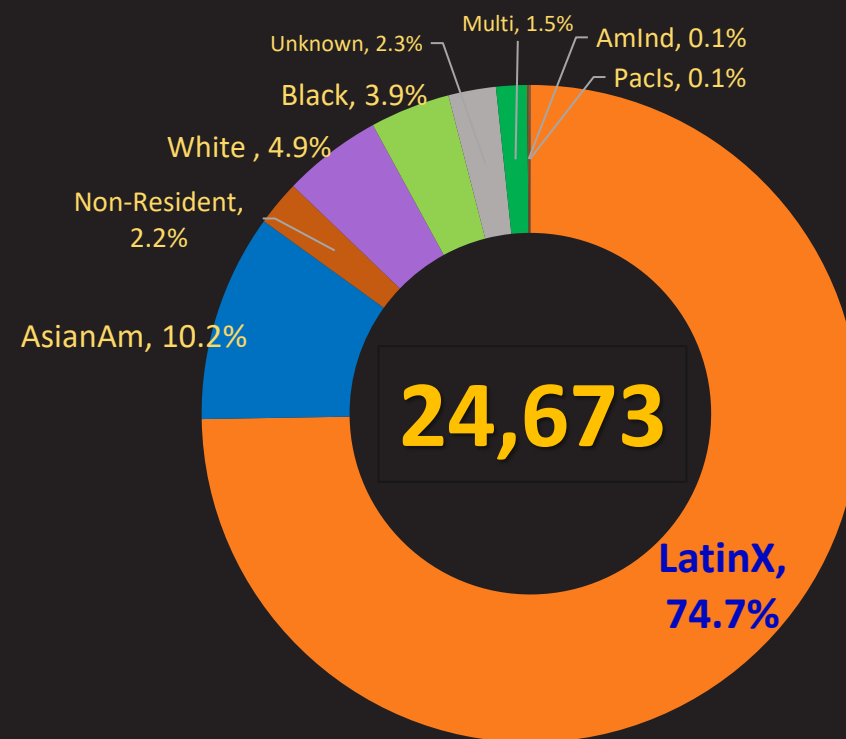
*Fall 2023*



## 1ST GENERATION



## ETHNICITY



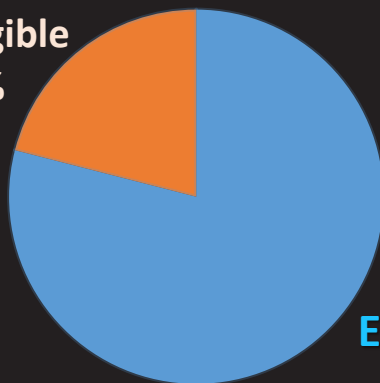


# CAL STATE LA

CALIFORNIA STATE UNIVERSITY, LOS ANGELES

## PELL ELIGIBILITY

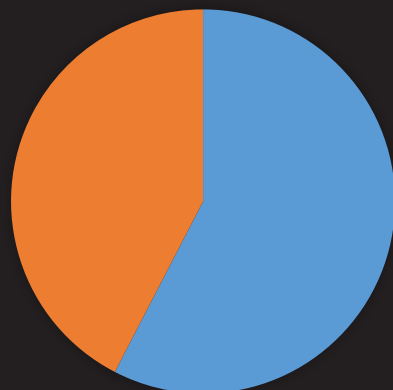
Not Eligible  
21%



Eligible  
79%

## 1ST GENERATION

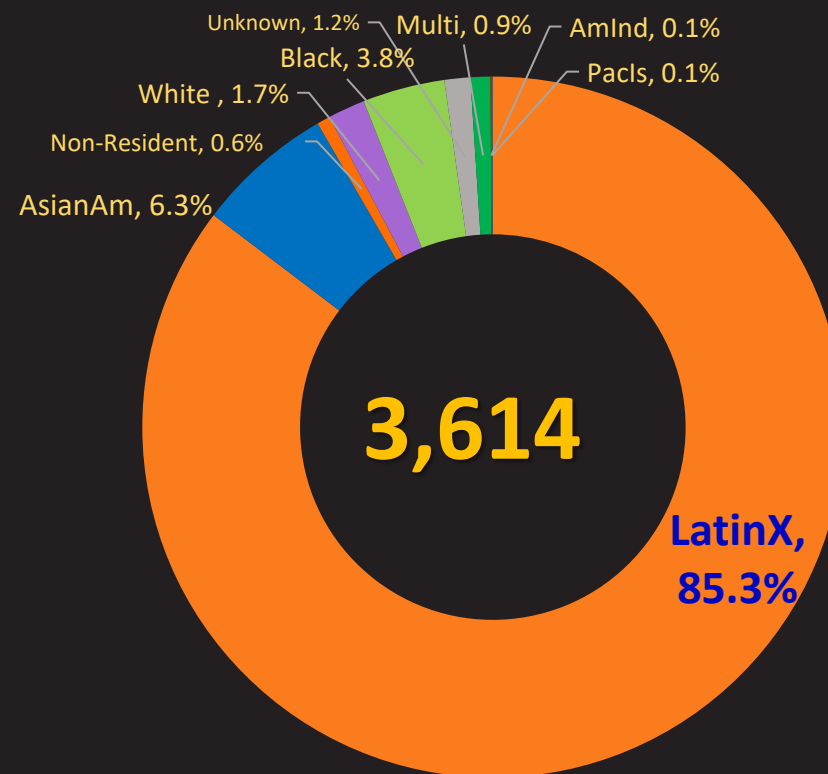
Not 1st Gen  
37%



1st Gen  
63%

## First-Time Freshmen: Fall 2023

## ETHNICITY



3,614

LatinX,  
85.3%



**15 Units  
/ Term**



**30 Units  
/ Year**



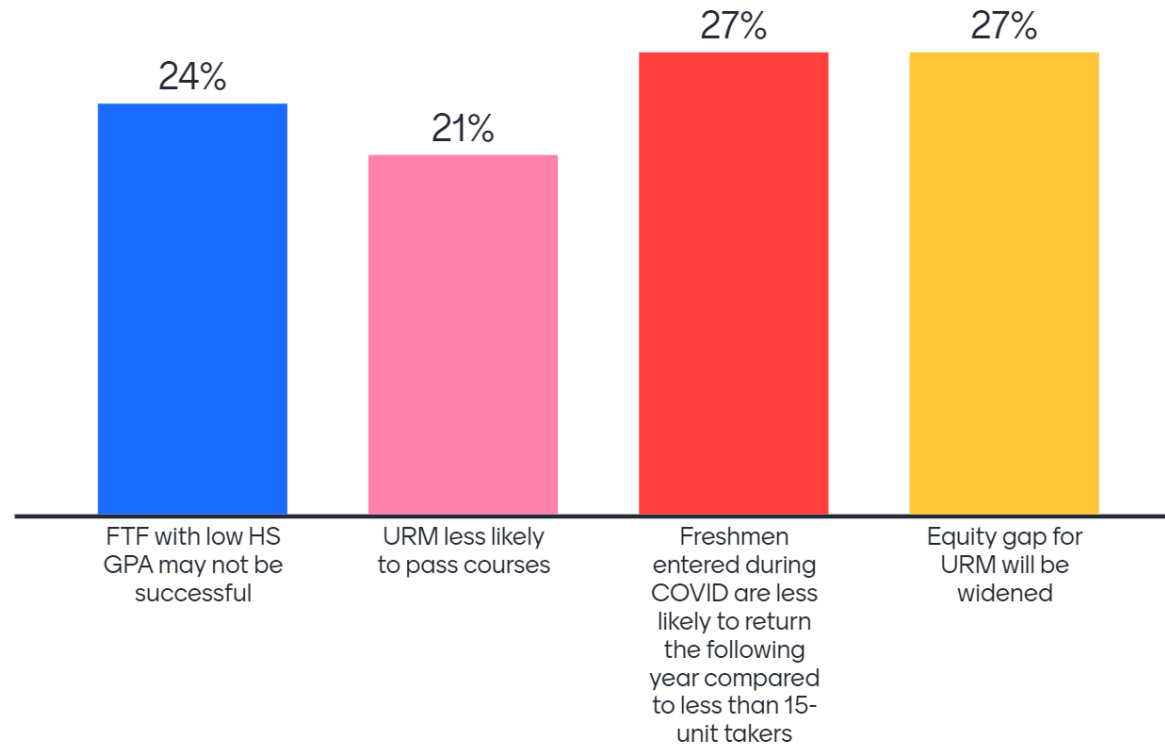
**What is your concern  
if first-time freshmen take 15 units ?**

**Mentimeter Time!**





# What is your concern if first-time freshmen take 15 units? (Mark all that apply)



# ***COVID Crisis* and Freshmen Full-Load in 1<sup>st</sup> Term ( $\geq 15$ Units) and 1<sup>st</sup> Year ( $\geq 30$ Units)**

<i>Timeline</i> \ <i>Metrics</i>	1-Year Retention	Completion Rates : 1 <sup>st</sup> Term and AY (UnitsEarned/UnitsAttempted)	4-Year Grad Rates
<b><i>Pre-Covid</i></b> Cohort	Fall 2016 – Fall 2018	Fall 2016 – Fall 2018	Fall 2016 – Fall 2019
<b><i>In-Covid</i></b> Cohort	Fall 2019 – Fall 2021	Fall 2019 – Fall 2021	
<b><i>Post-Covid</i></b> Cohort	Fall 2022	Fall 2022	
Total	Fall 2016 – Fall 2022	Fall 2016 – Fall 2022	

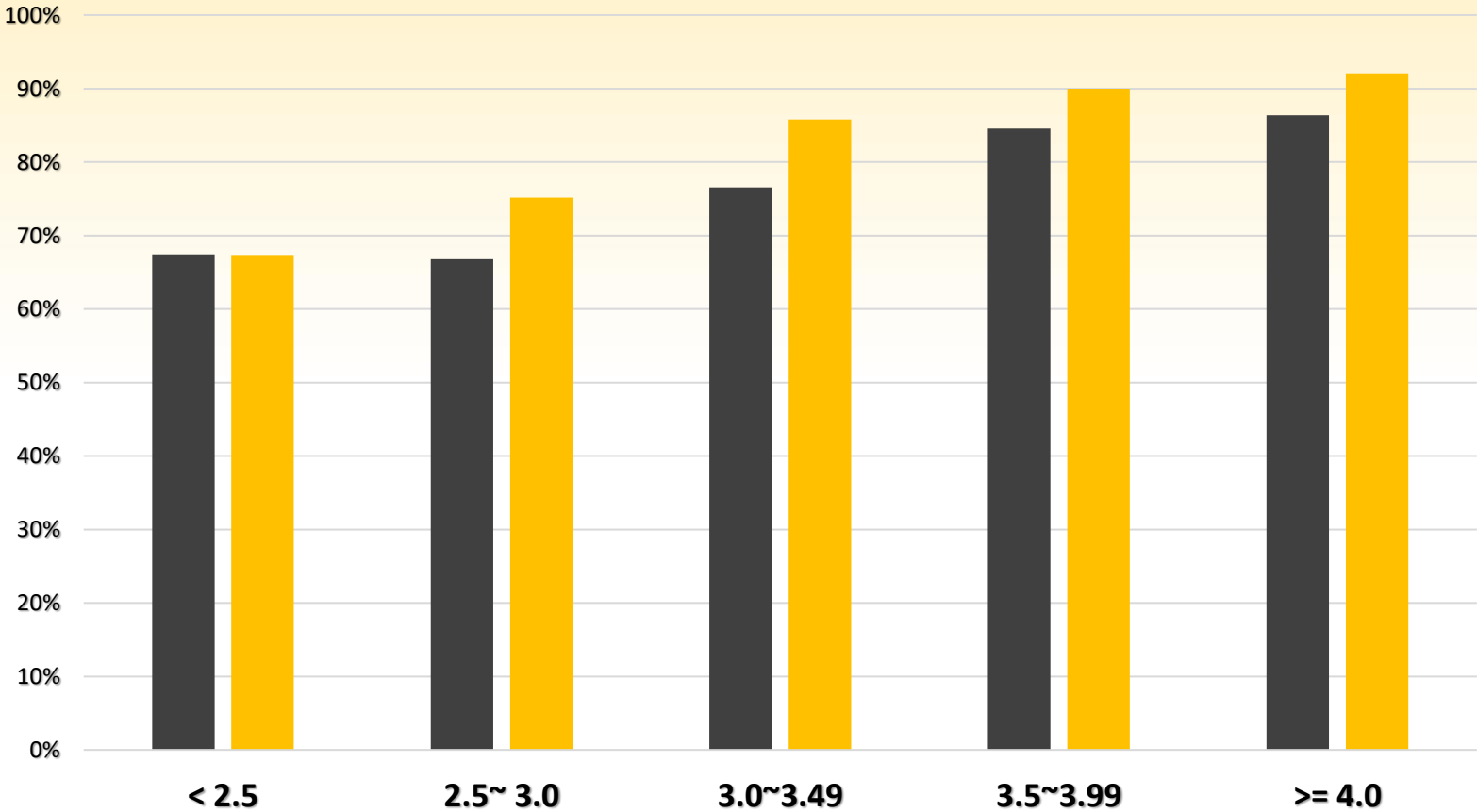


# Concern #1. Freshmen with Low High School GPA ?

Pre-COVID: 1-Year Retention x HSGPA

**15 Units**  
in 1<sup>st</sup> Term

- >= 15 Units
- < 15 Units



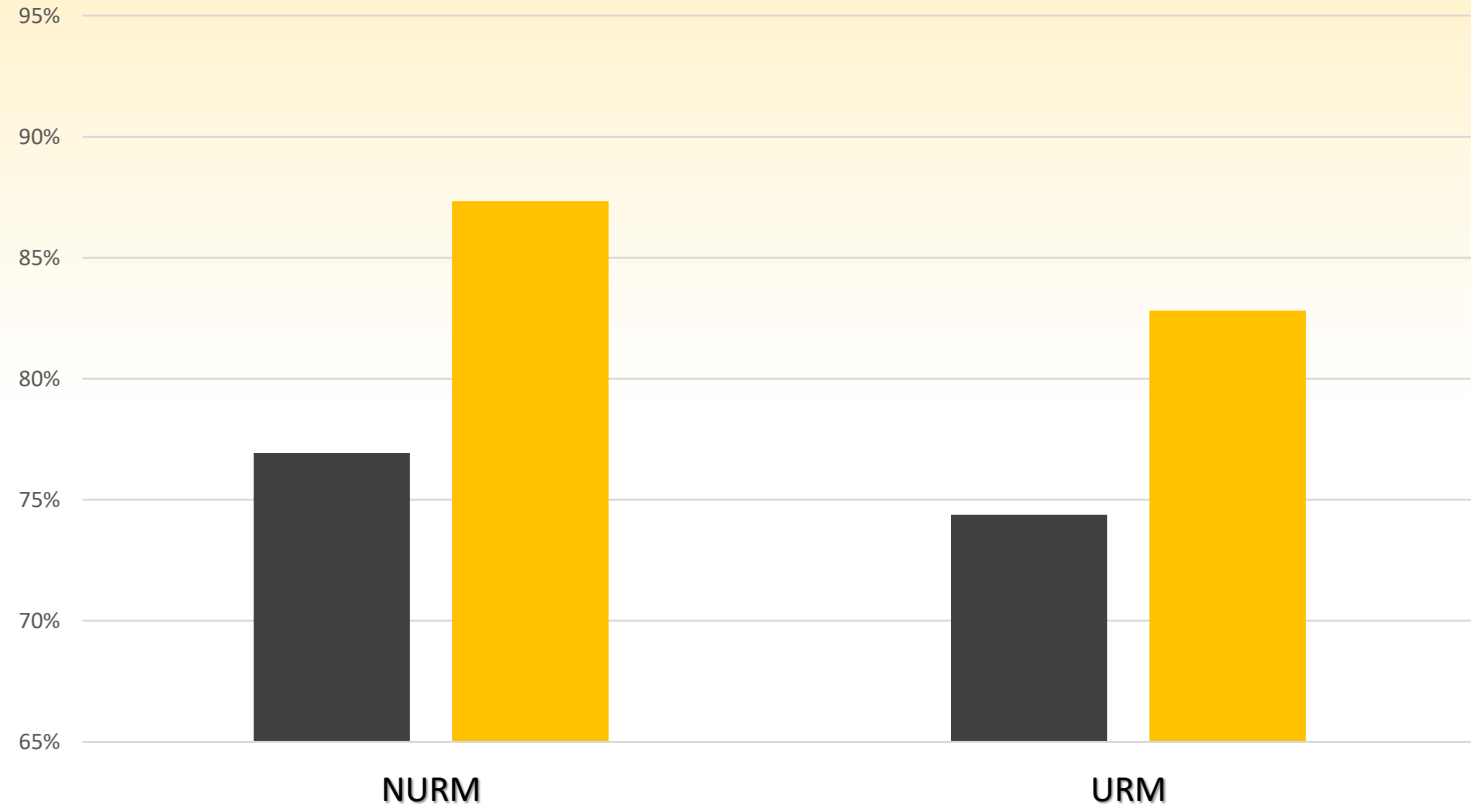


# Concern #2. Underrepresented Students ?

Pre-COVID: 1-Year Retention x HSGPA

**15 Units**  
in 1<sup>st</sup> Term

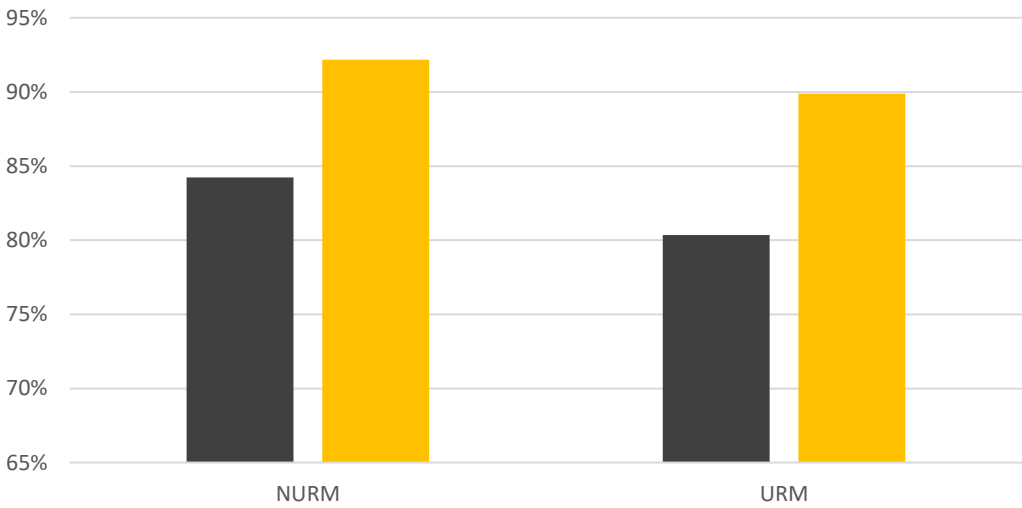
■  $\geq 15$  Units  
■  $< 15$  Units



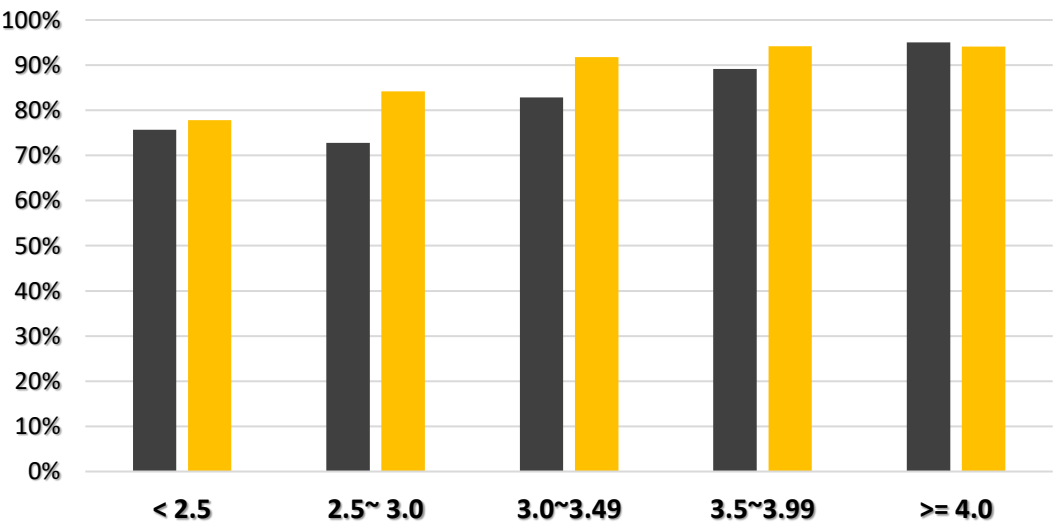


**30 Units**  
in 1<sup>st</sup> Year

**Pre-COVID: 1-Year Retention x URM**

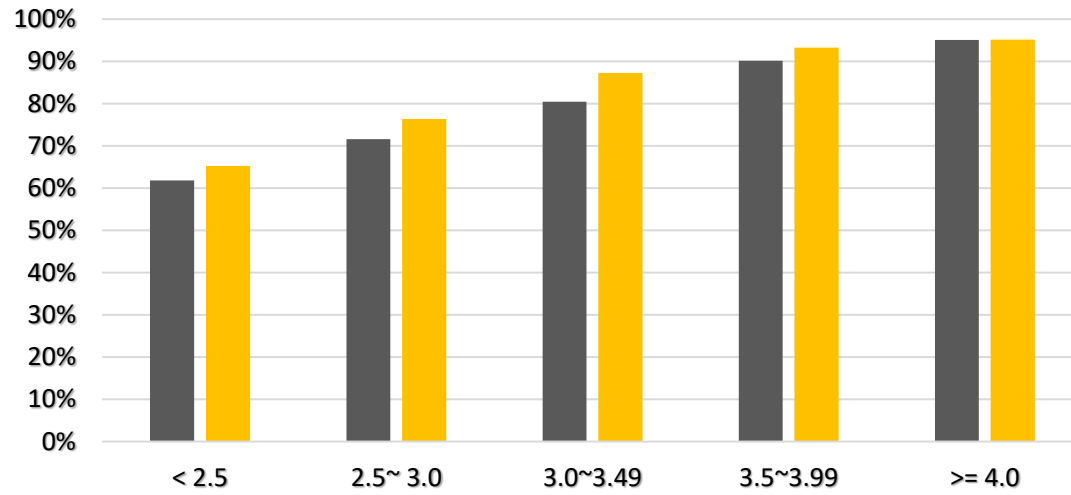


**Pre-COVID: 1-Year Retention x HSGPA**

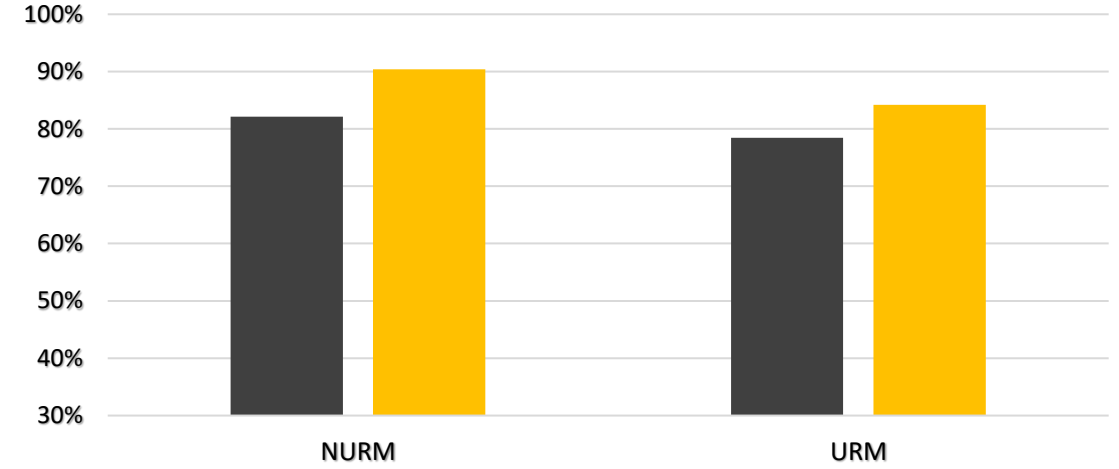


**15 Units**  
in 1<sup>st</sup> Term

**Pre-COVID: 1st Term Completion x HSGPA**

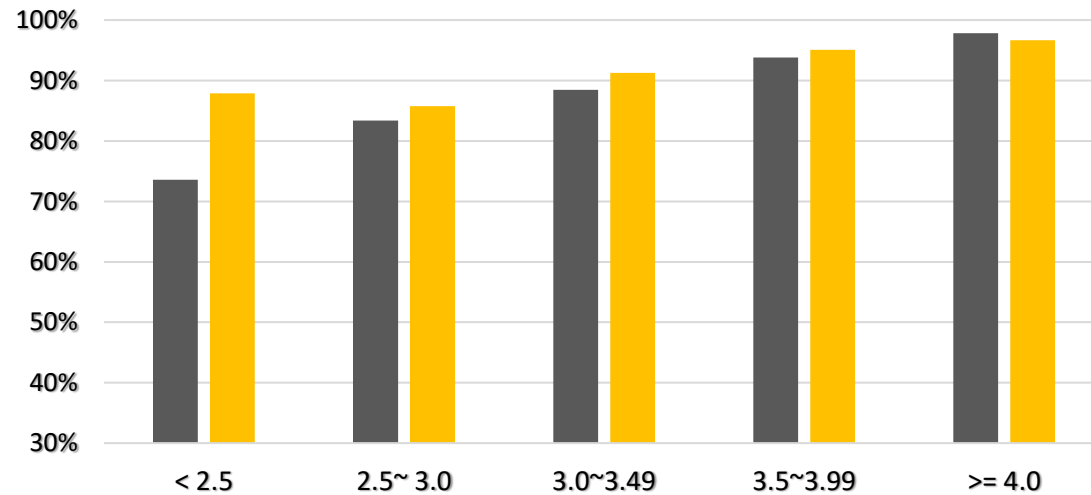


**Pre-COVID: 1st Term Completion x HSGPA**

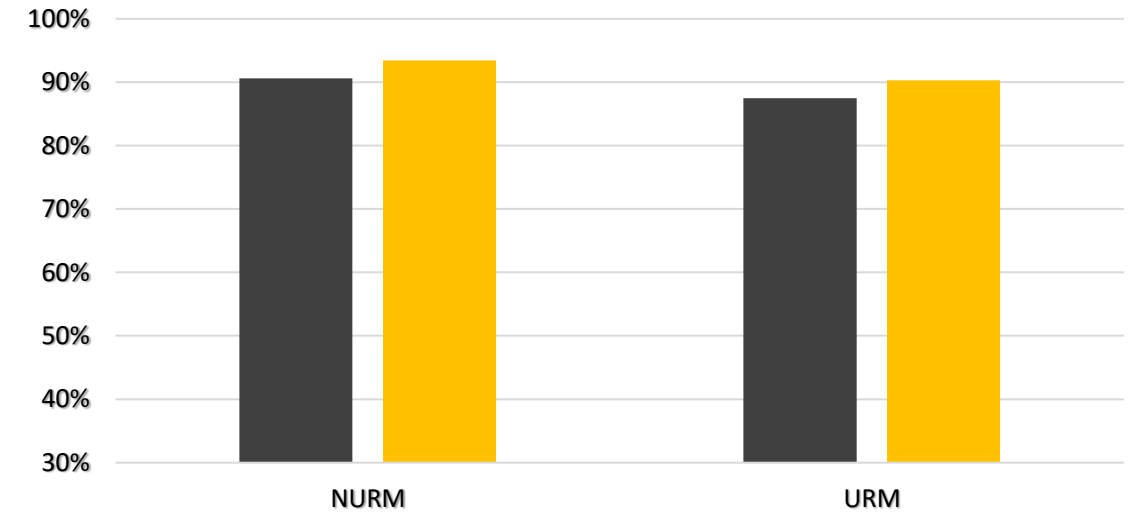


**30 Units**  
in 1<sup>st</sup> Year

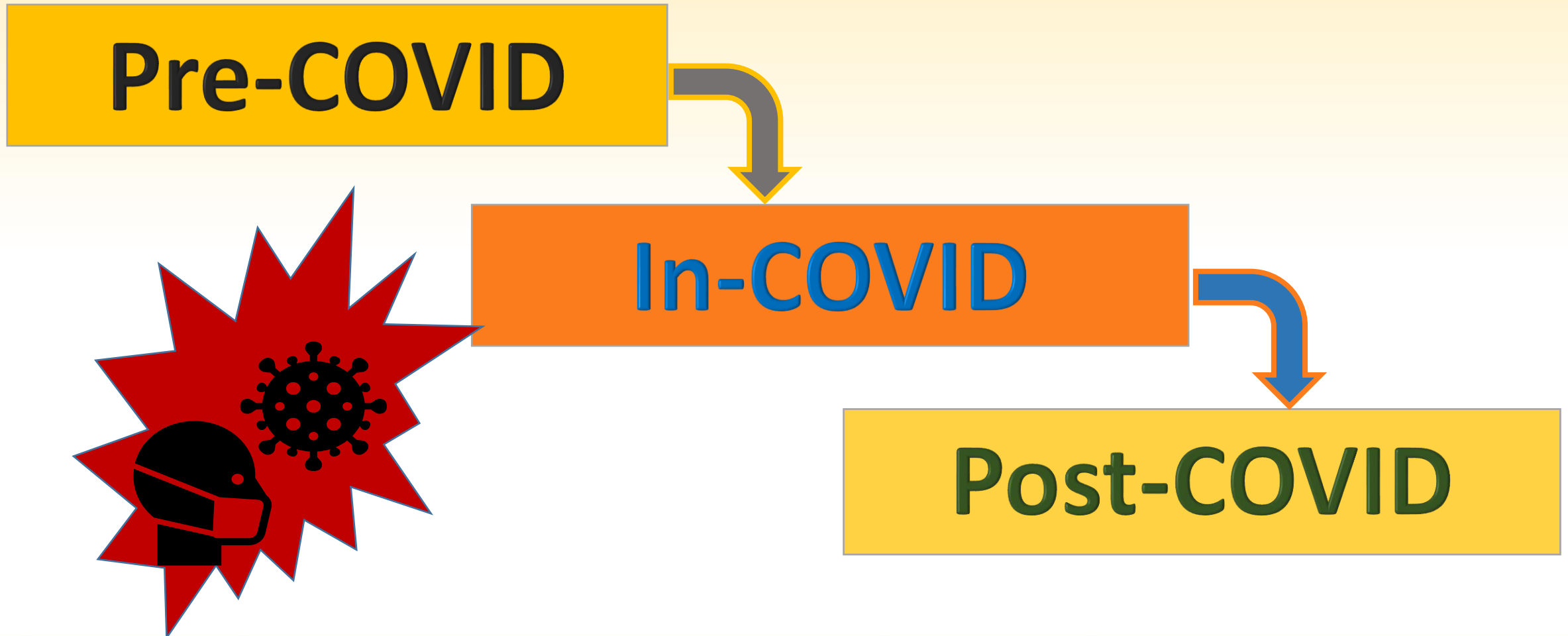
**Pre-COVID: 1-Year Completion x HSGPA**



**Pre-COVID: 1-Year Completion x URM**

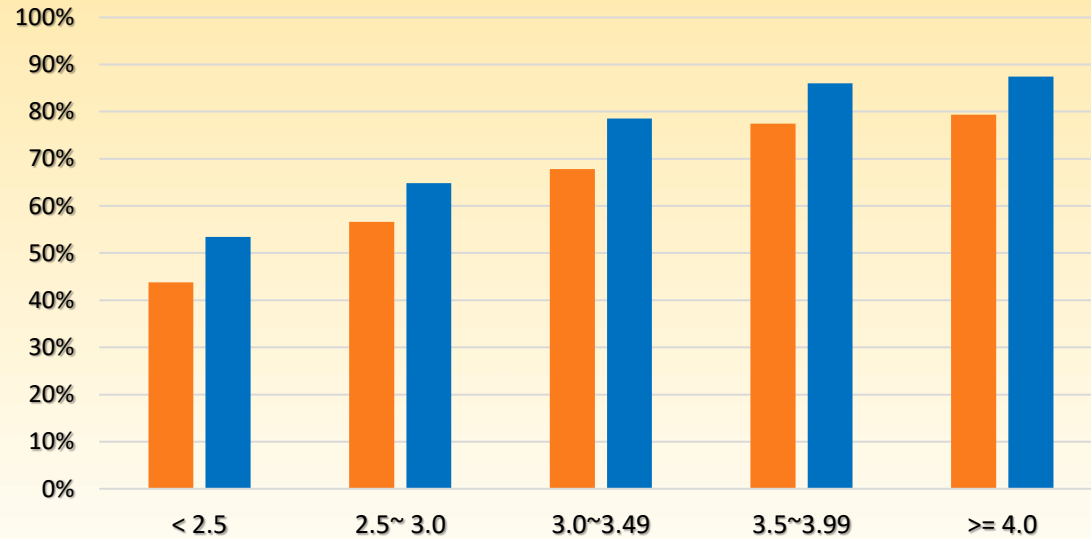


# ***COVID Crisis*** and Freshmen Full-Load in 1<sup>st</sup> Term ( $\geq 15$ Units) and 1<sup>st</sup> Year ( $\geq 30$ Units)

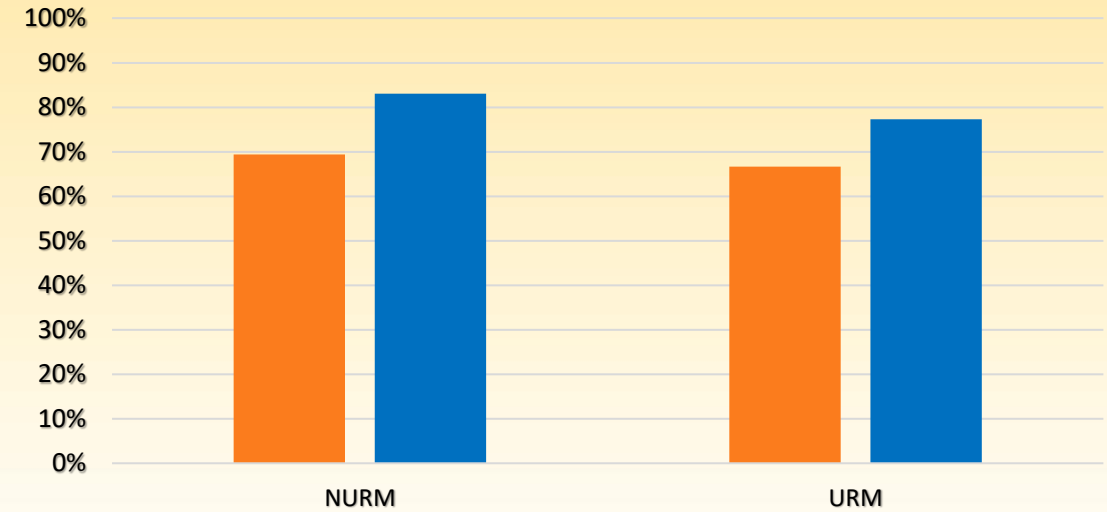


**In-COVID: 1-Year Retention x HSGPA**

**15 Units**  
in 1<sup>st</sup> Term

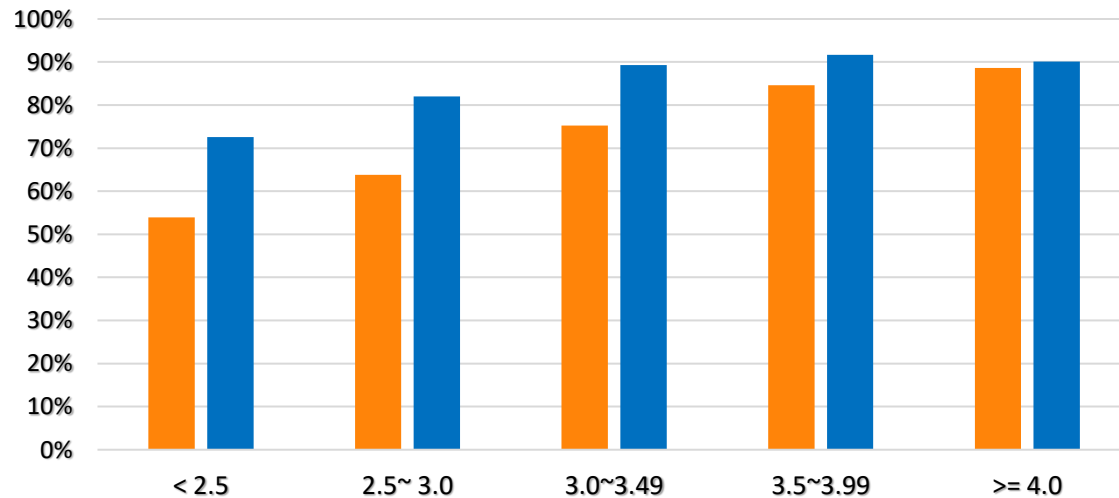


**In-COVID: 1-Year Retention x URM**

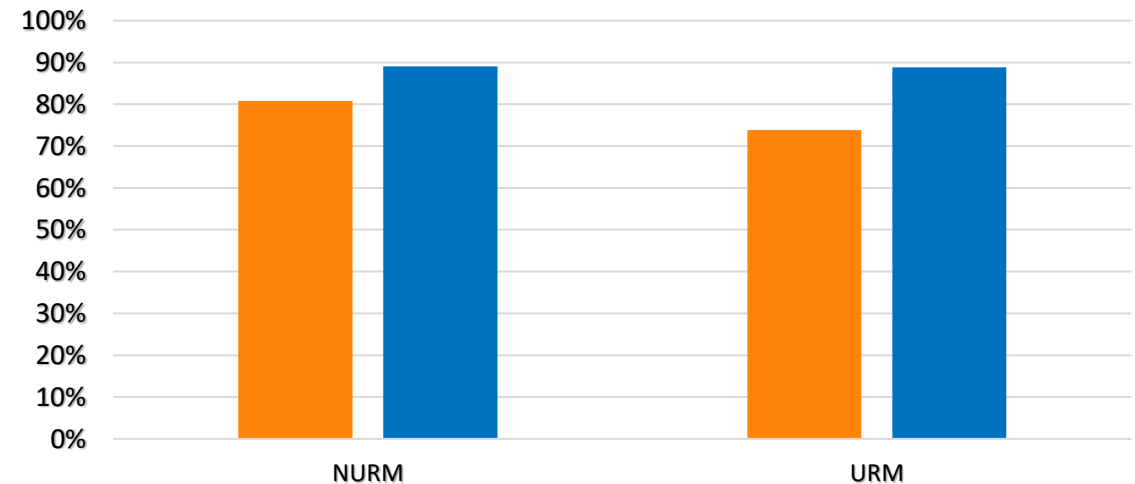


**In-COVID: 1-Year Retention x HSGPA**

**30 Units**  
in 1<sup>st</sup> Year

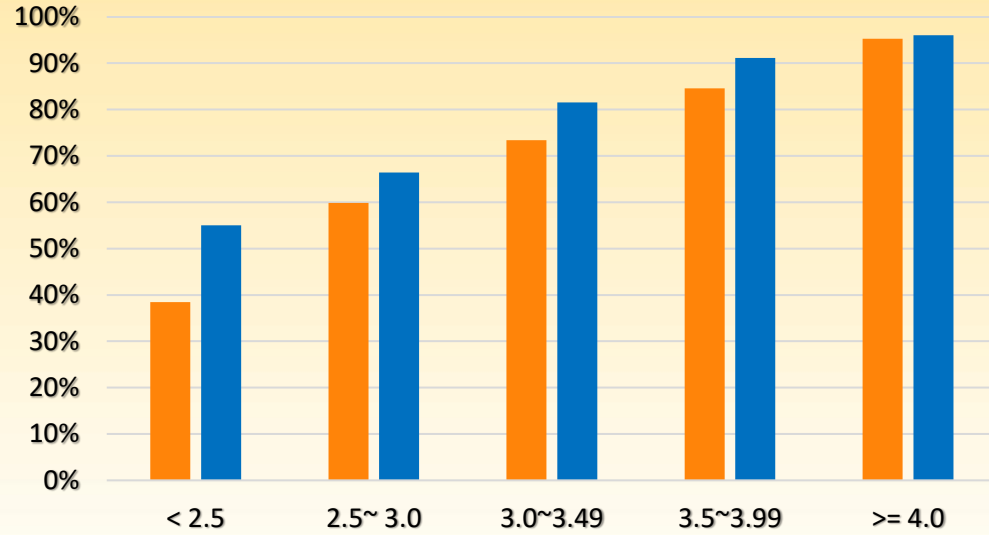


**In-COVID: 1-Year Retention x URM**

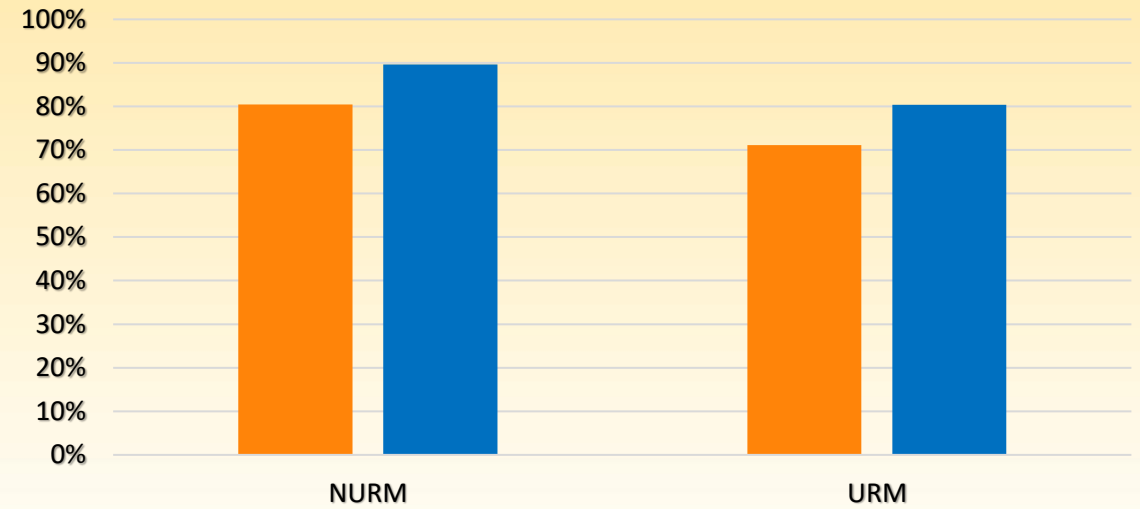


**In-COVID: 1<sup>st</sup> Term Completion x HSGPA**

**15 Units**  
in 1<sup>st</sup> Term

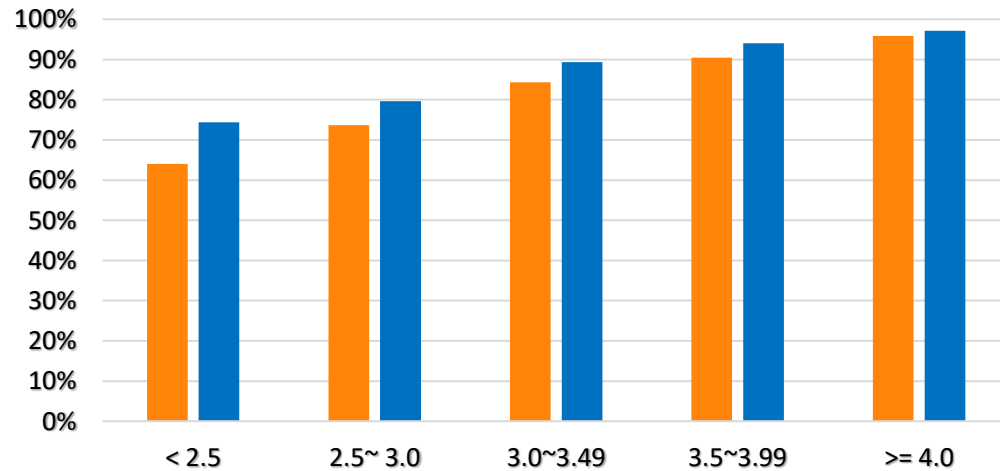


**In-COVID: 1<sup>st</sup> Term Completion x URM**

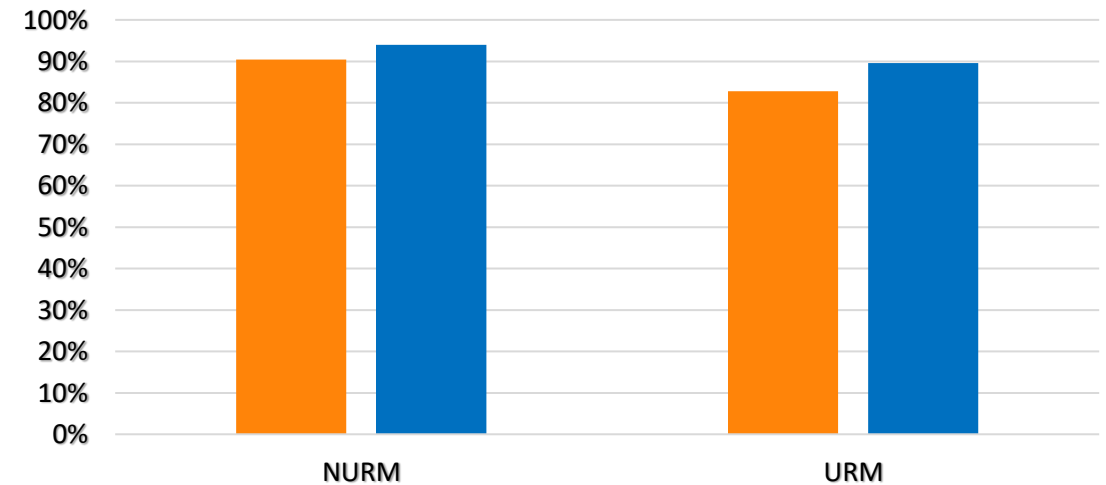


**In-COVID: AY Completion x HSGPA**

**30 Units**  
in 1<sup>st</sup> Year

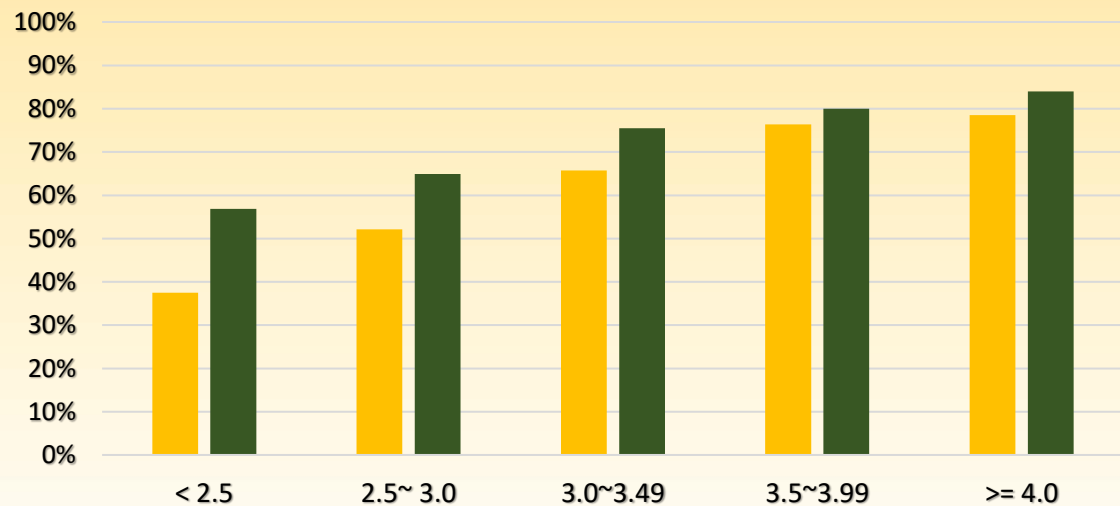


**In-COVID: AY Completion x URM**





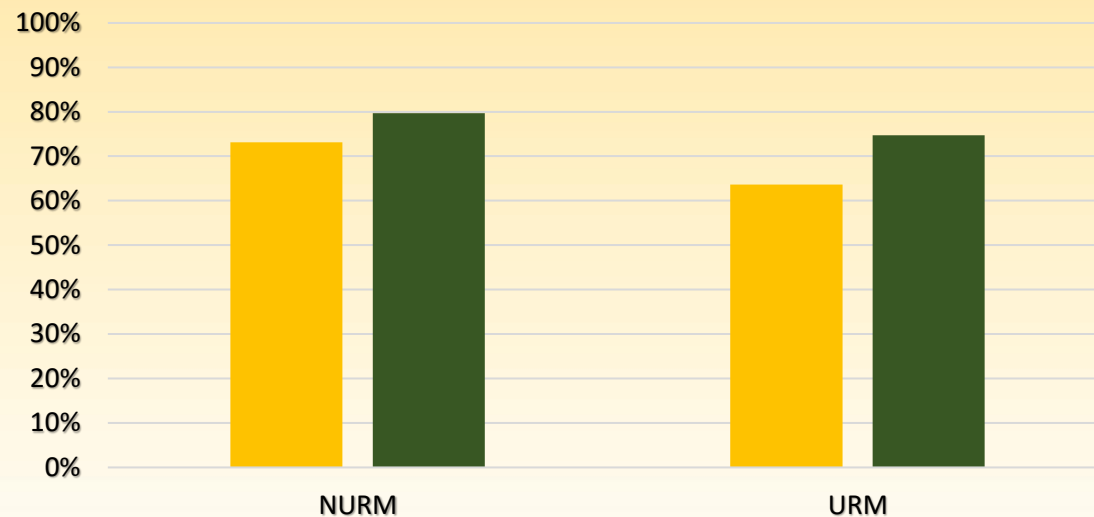
Post-COVID: 1-Year Retention x HSGPA



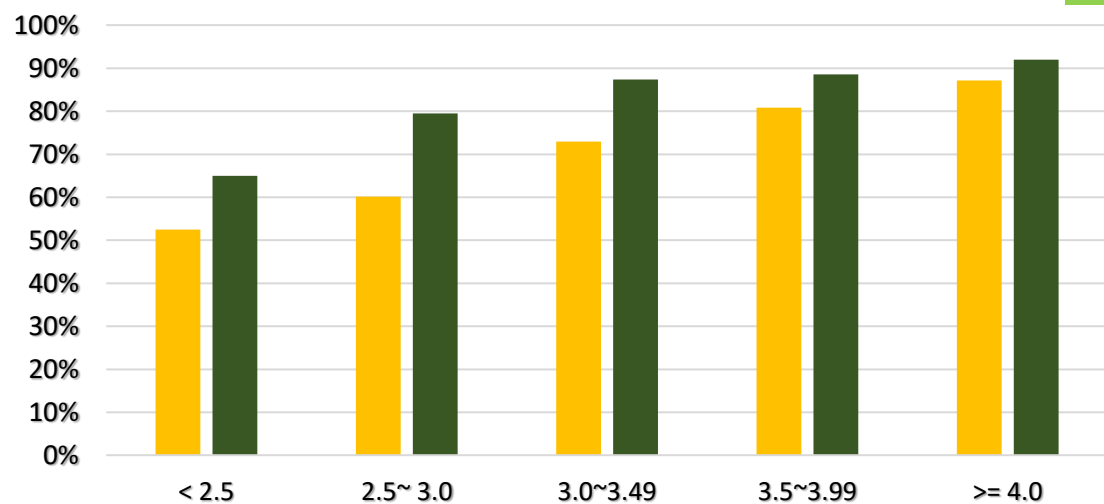
15 Units

in 1<sup>st</sup> Term

Post-COVID: 1-Year Retention x URM



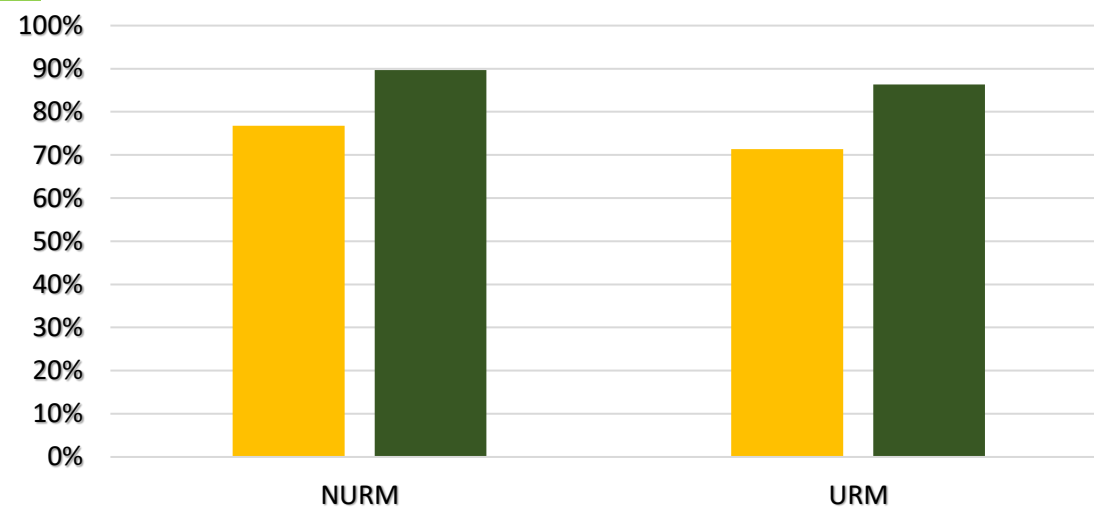
Post-COVID: 1-Year Retention x HSGPA



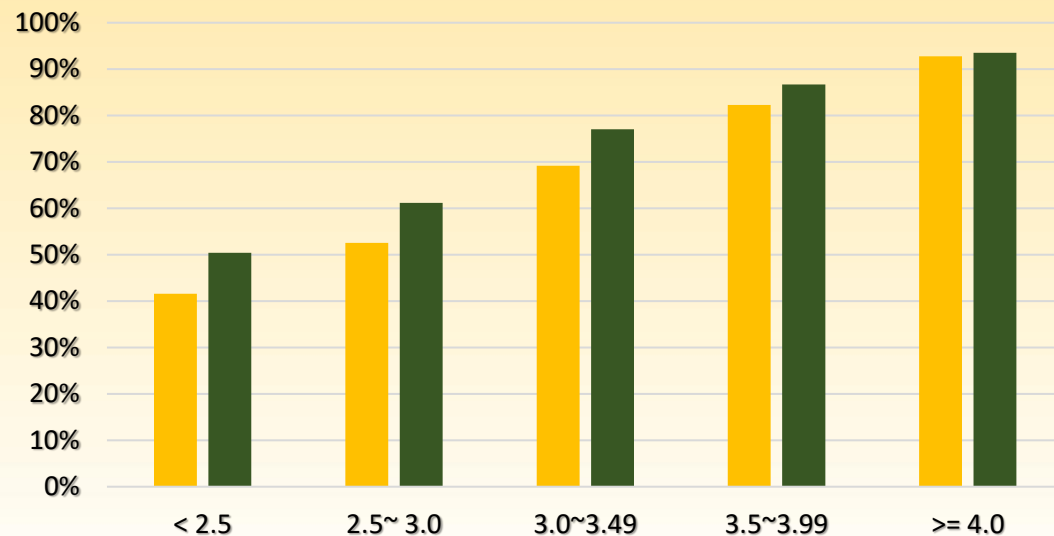
30 Units

in 1<sup>st</sup> Year

Post-COVID: 1-Year Retention x URM

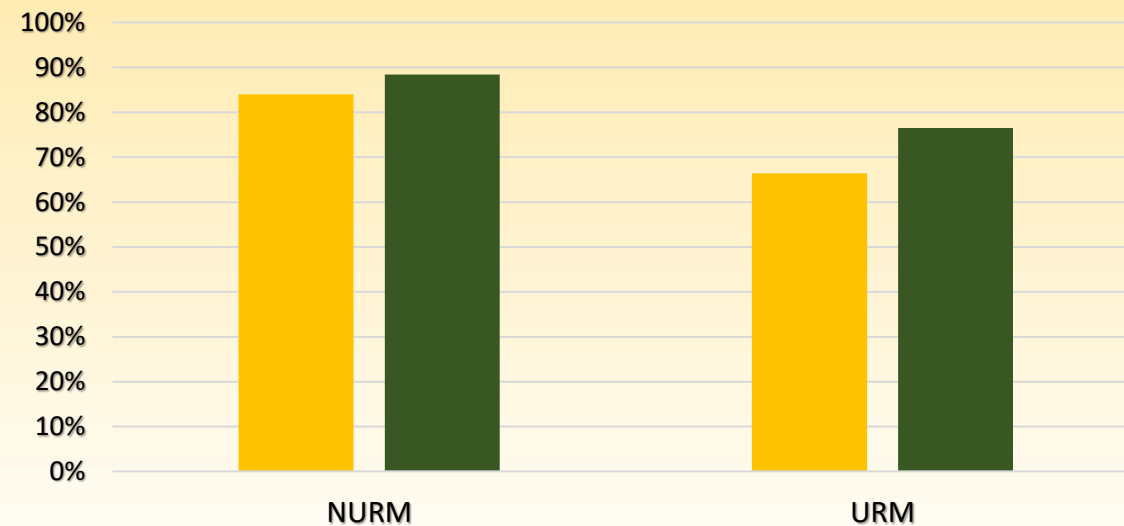


Post-COVID: 1<sup>st</sup> Term Completion x HSGPA

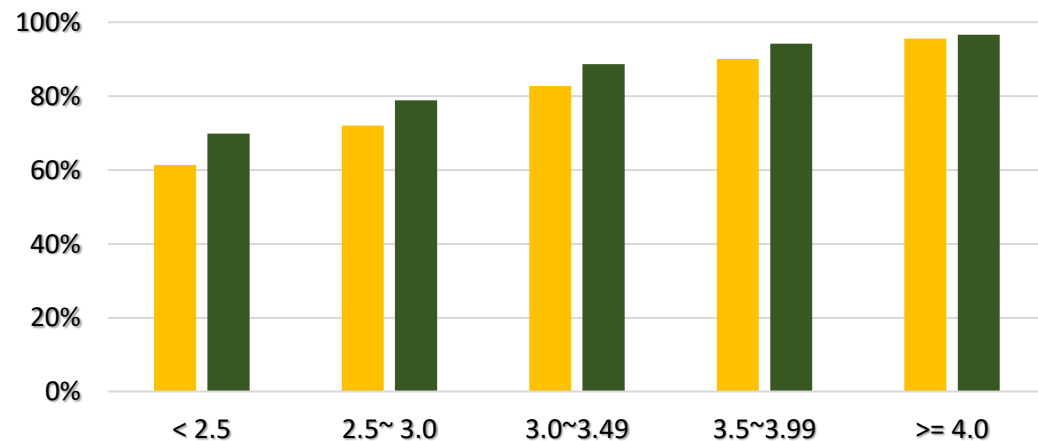


15 Units  
in 1<sup>st</sup> Term

Post-COVID: 1<sup>st</sup> Term Completion x URM

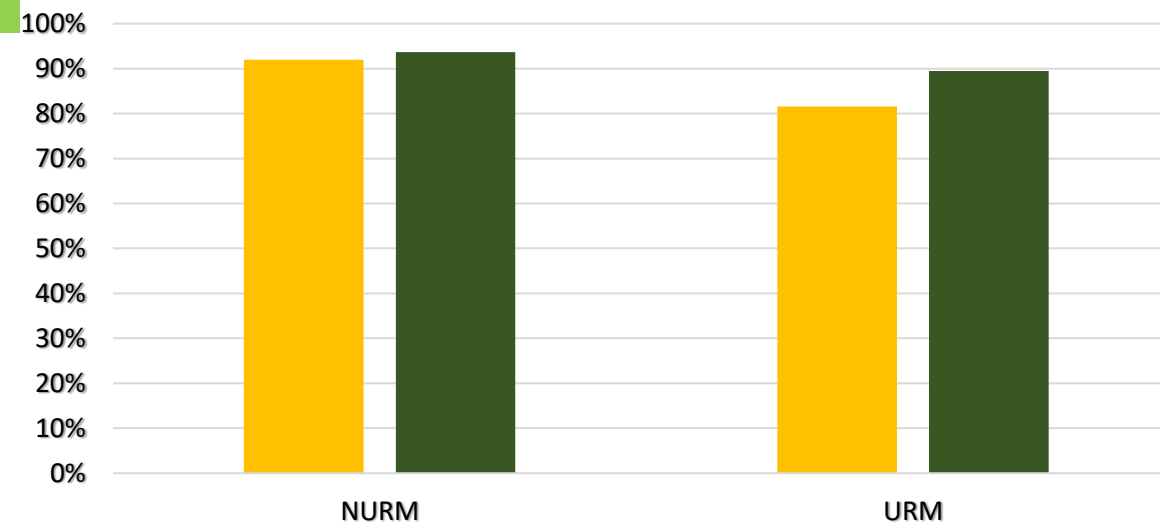


Post-COVID: AY Completion x HSGPA



30 Units  
in 1<sup>st</sup> Year

Post-COVID: AY Completion x URM



# ***Testing for Statistical Significance!***

***1<sup>st</sup> Gen ?***

***Gender ?***

***HS GPA ?***

***URM ?***

***Full-Load ?***

***Unmet Needs ?***

***Equity Gap : URM X Full-Load ?***



# ***COVID Crisis*** and Freshmen Full-Load

<i>Timeline</i> \ <i>Metrics</i>	<i>1-Year Retention</i>	<i>Completion Rates : 1<sup>st</sup> Term and AY (UnitsEarned/UnitsAttempted)</i>	<i>4-Year Grad Rates</i>
<b><i>Pre-Covid</i></b> Cohort	Fall 2016 – Fall 2018	Fall 2016 – Fall 2018	<b><i>Fall 2016 – Fall 2019</i></b>
<b><i>In-Covid</i></b> Cohort	<b><i>Fall 2019 – Fall 2021</i></b>	Fall 2019 – Fall 2021	
<b><i>Post-Covid</i></b> Cohort	<b><i>Fall 2022</i></b>	Fall 2022	
Total	Fall 2016 – Fall 2022	Fall 2016 – Fall 2022	



# Logistic Regression on *1-Year Retention Rates* : *In-Covid*

HS GPA > Unmet Needs > 15 Units in 1<sup>st</sup> Term > URM > MEN >

IVs	B	Wald	Sig.	Exp(B)
HS GPA	1.055	325.086	<b>0.000</b>	2.873
URM	-0.298	7.484	<b>0.006</b>	0.742
Full-Load in 1 <sup>st</sup> Term	0.506	16.696	<b>0.000</b>	1.659
MEN	-0.112	5.860	<b>0.015</b>	0.894
1st GEN	-0.009	0.032	0.858	0.991
UNMET_NEEDS	-0.057	216.462	<b>0.000</b>	0.945
URM X Full-Load	-0.074	0.302	0.582	0.929

Nagelkerke  
R Square = 10%



# Logistic Regression on *1-Year Retention Rates* : *Post-Covid*

HS GPA > Unmet Needs > 15 Units in 1<sup>st</sup> Term

IVs	B	Wald	Sig.	Exp(B)
HS GPA	0.919	77.319	<b>0.000</b>	2.506
URM	-0.102	0.330	0.566	0.903
Full-Load in 1 <sup>st</sup> Term	0.734	8.063	<b>0.005</b>	2.084
MEN	-0.087	0.966	0.326	0.917
1st GEN	-0.124	1.752	0.186	0.883
UNMET_NEEDS	-0.025	10.640	<b>0.001</b>	0.975
URM X Full-Load	0.038	0.019	0.891	1.039

Nagelkerke  
R Square = 10%





# Logistic Regression on *4-Year Graduation Rates*

HS GPA > Men > 15 Units in 1<sup>st</sup> Term > Unmet Needs

IVs	B	Wald	Sig.	Exp(B)
HS GPA	1.247	458.536	<b>0.000</b>	3.480
URM	-0.186	3.794	0.051	0.830
Full-Load in 1 <sup>st</sup> Term	0.881	77.842	<b>0.000</b>	2.414
MEN	-0.567	153.042	<b>0.000</b>	0.567
1st GEN	-0.061	1.676	0.195	0.941
UNMET_NEEDS	-0.018	15.349	<b>0.000</b>	0.983
URM X Full-Load	-0.073	0.422	0.516	0.930

Nagelkerke  
R Square = 10%



# ***Higher Education Research Literature***

- Academic ***Momentum*** Theory

The speed with which undergraduates initially progress in college significantly affects their likelihood of completing a degree

- Early Credit ***Momentum***

15 credits in their first term graduates at significantly higher rates

- Academic ***Intensity*** Theory

Levels of academic intensity (high units) in the first year of higher education contributes eventual success





**Momentum !!**





**SUCCESS IS LIKE A SNOWBALL ...  
IT TAKES MOMENTUM TO BUILD  
AND THE MORE YOU ROLL IN THE  
RIGHT DIRECTION THE BIGGER IT GETS.**

Steve Ferrante



**Momentum !!**

**SNOWBALL EFFECT**

# ***Conclusion/Implication***

- **HS GPA, Unmet Needs, Full-Load, URM X Full-Load (Equity Gap)**
- ***Pell-Eligible* (dichotomous) vs. *Unmet Needs* (continuous)?**

- **Unmet Needs: Difference between the Financial Need and Financial Aid Offered**
- Financial Needs: Difference between the COA and the EFC
- COA (Cost of Attendance): Estimated cost, including tuition and fees, books and supplies, room & board, personal costs, and transportation
- EFC (Expected Family Contribution): Amount that the family is expected to contribute to the student's education (determined by the Federal Methodology need analysis formula)



**Conclusion/  
Implication**

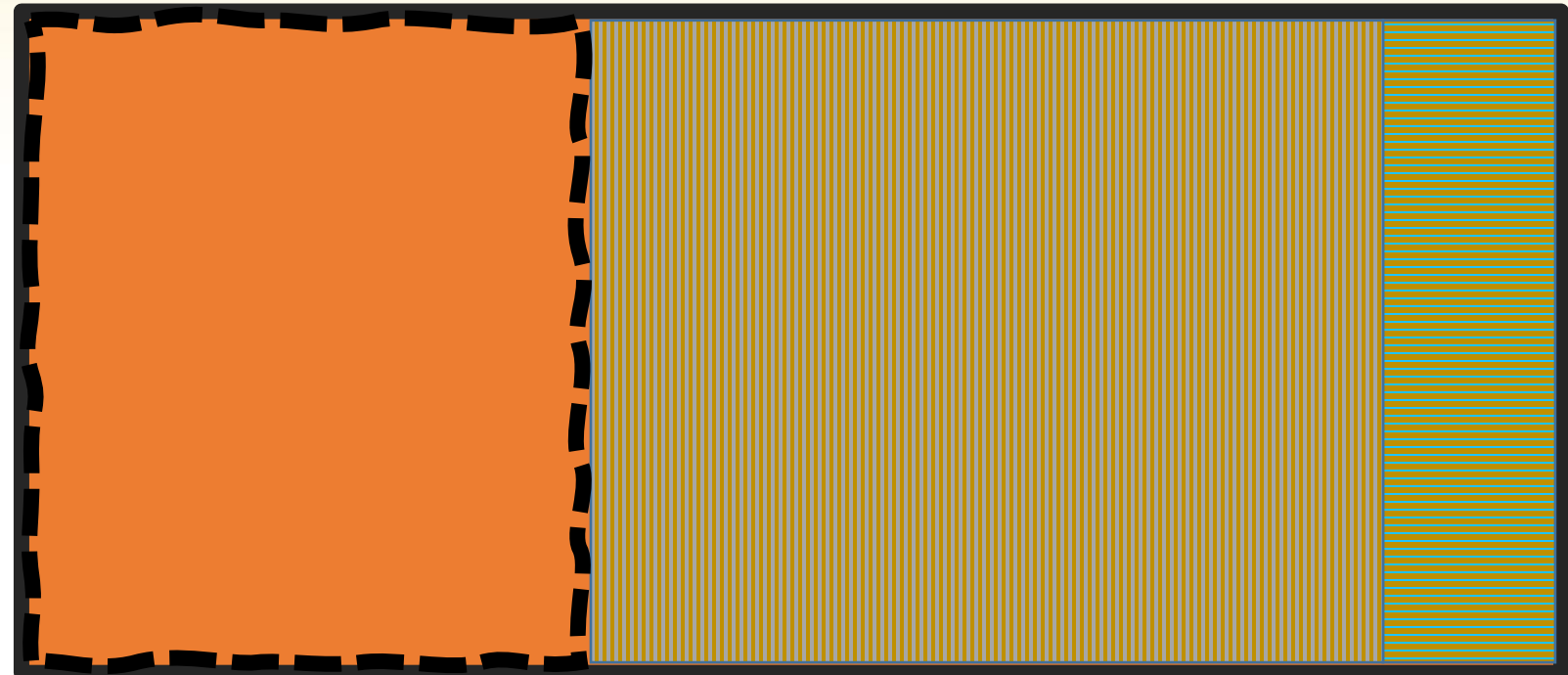
**COA**

**Financial Needs**

**Unmet Needs**

**Financial Aid**  
*(Need-Based Aid)*

**EFC**



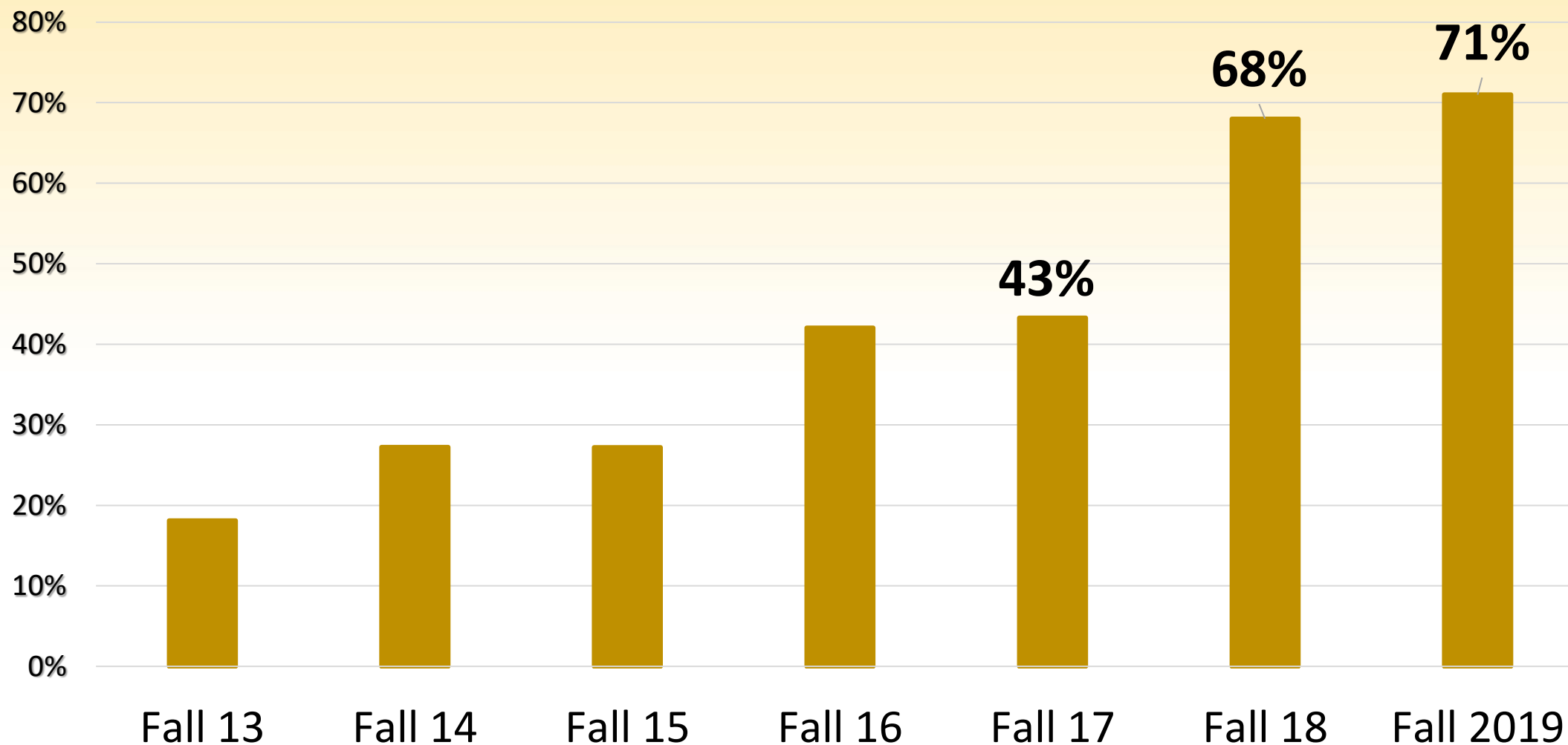
**Need-Based Aid:**

Pell Grant, Scholarship, Fed  
WorkStudy, Fed Direct Sub Loan



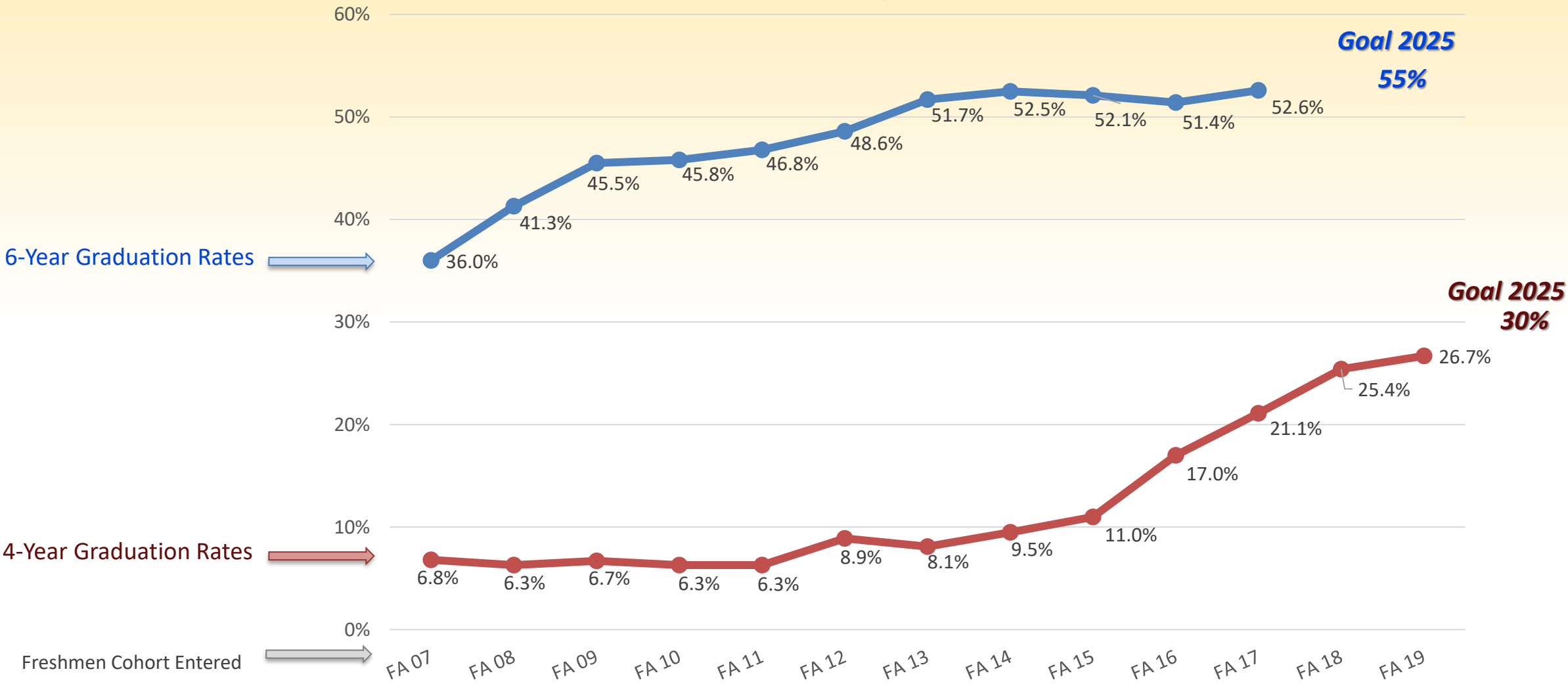


***Pre-Covid % of Full Loaders (  $\geq 15$  Units ) :***  
*First-Time Freshmen*



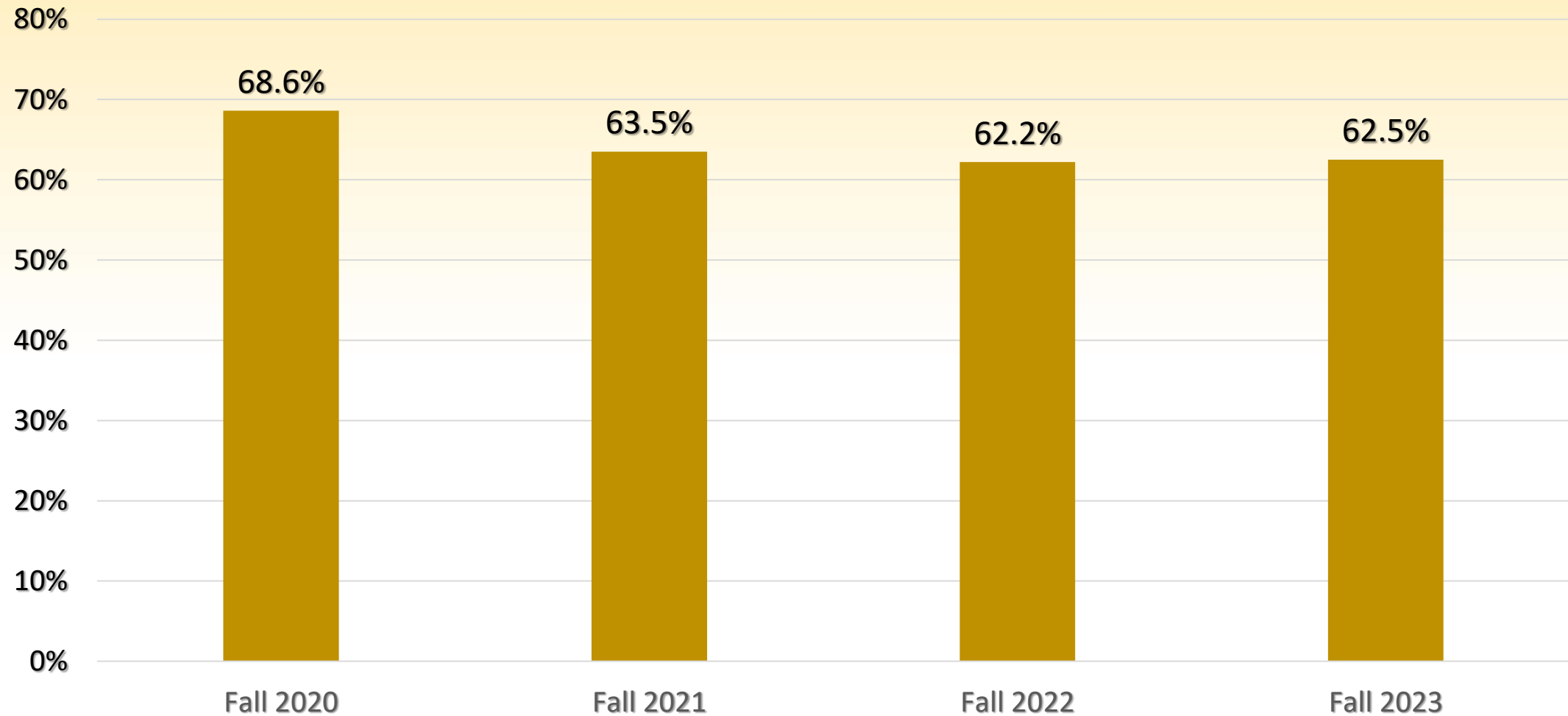
# Graduation Initiative 2025: Cal State LA

*Graduation Rates for Fall Freshmen Cohort*



# In- and Post-Covid % of Full-Loaders

## First-Time Freshmen



Unmet Needs	Pre-COVID	In-COVID	Post-Covid
Median	\$3,721	\$4,775	\$6,728

# Q & A





**CAL STATE LA**  
CALIFORNIA STATE UNIVERSITY, LOS ANGELES

# Contact Us

---

Office of Institutional Effectiveness  
CALIFORNIA STATE UNIVERSITY, LOS ANGELES  
5151 State University Drive, Los Angeles, CA 90032

---

## Phone

[323.343.2730](tel:323.343.2730)

---

## Email

[IE@calstatela.edu](mailto:IE@calstatela.edu)

---

## Web

[calstatela.edu/IE](http://calstatela.edu/IE)