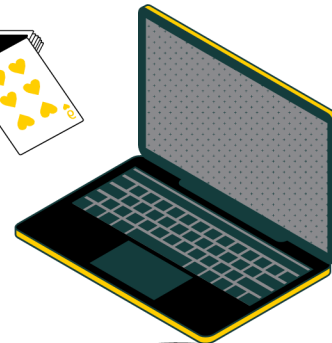
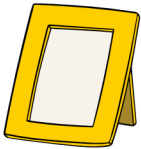
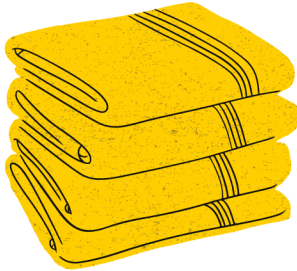
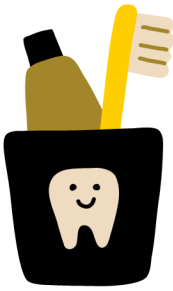


MOVE-IN CHECKLIST

South Village



A few of your favorite things!

- ☐ Cozy blanket
- ☐ Framed photos
- ☐ Stuffed animal
- ☐ Cal State LA water bottle

Sleeping things

- ☐ Pillow(s)
- ☐ Pillowcases
- ☐ Earplugs/Eyemasks
- ☐ Comforters/blankets
- ☐ Sheets (*all beds are Twin XL*)
- ☐ Mattress pad

Living things

- ☐ Alarm clock
- ☐ Backrest/floor cushions
- ☐ Desk/floor lamps (not halogen)
- ☐ Games/playing cards
- ☐ Power strip (*with surge protector only*)
- ☐ TV
- ☐ Decorations (*check our Residents page for approved decorations*)
- ☐ Storage containers
- ☐ Mirror
- ☐ Hangers
- ☐ Mini-fridge (*one per room, 4 cubic feet*)

General things

- ☐ First Aid Kit
- ☐ Flashlight
- ☐ Non-Mercury thermometer
- ☐ Basic over-the-counter medications
- ☐ Sunscreen
- ☐ Important documents & a place to store them

Cleaning things

- ☐ Laundry detergent & fabric softener
- ☐ Trash bags (6-10 gallon)
- ☐ Handheld/Small vacuum
- ☐ Hamper

Hygiene things

- ☐ Towels & washcloths
- ☐ Shower caddy
- ☐ Robe
- ☐ Personal toiletries & grooming items
- ☐ Toothpaste and toothbrush
- ☐ Hand sanitizer/face coverings

Study things

- ☐ Computer/laptop/tablet
- ☐ Headphones
- ☐ Backpack
- ☐ School supplies
- ☐ Chargers

Don't bring these things

- ✗ Furniture (provided)
- ✗ Microwaves
- ✗ Candles, incense & other flammables
- ✗ Extension cords
- ✗ Flushable wipes
- ✗ Space heaters & air conditioners
- ✗ More than one mini fridge
- ✗ Weapons of any type
- ✗ Drugs/drug paraphernalia
- ✗ Alcohol (*for students under 21 years of age*)
- ✗ Vaping materials
- ✗ Pets (except fish, see Housing policy for details)
- ✗ Drones

Please Note: Micromobility devices may not be operated, charged or stored inside the residential communities. Micromobility devices include electric skateboards, electric bicycles and electric scooters. Please reference the Housing Handbook for more information.