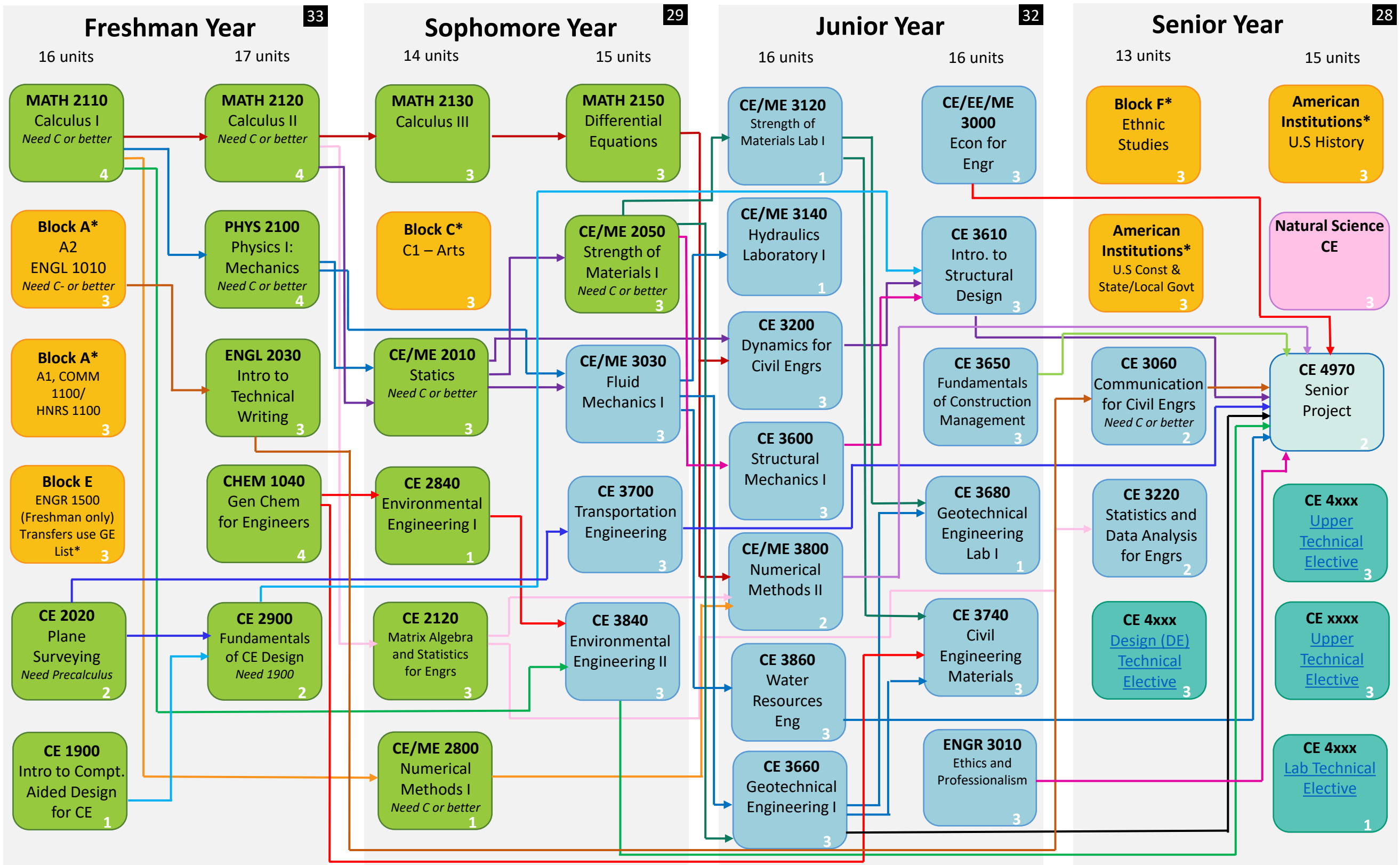




California State University Los Angeles

Department of Civil Engineering

Bachelor of Science in Civil Engineering 122 Units Fall 2024



————→ Prerequisite
 - - - - -> Pre/Co-requisite

* [Choose one course from Lower Division GE List in University e-catalog](#) – Must take either 2 (re) or 1 (re) + 1 (d) with LD GE's

Color Key:

- General Education (Yellow)
- Lower Division (Green)
- Natural Science (Pink)
- Upper Division (Blue)
- Senior Design (Light Blue)
- Technical Elective (Teal)

The rainbow lines do not have meaning; they are pretty lines to help you follow the path.