

WINTER 2023 ➤

PBI NEWSLETTER

2022



*Unleashing the power
of participation*

Photo by: David Ng

Message from the executive director



As we share PBI's work in 2022 with our friends and colleagues, we will keep working for justice, safety, and equity despite the obstacles and tragedies our communities continue to face. Our mantra of "unleashing the power of participation" is not just a plan for civic engagement, but a call to action here and throughout the nation. We look forward to joining you in that effort.



Rachel Sonenshein



**Editorial
Team**



Viviana Villafuerte

Lizeth Hernandez

Yamireth Solis

Annie Ojeda

2022 ANNUAL EVENT

Recognizing

LEADERSHIP IN PUBLIC HEALTH

On June 9, the Pat Brown Institute hosted its annual event, "Recognizing Leadership in Public Health." The Institute honored Dr. Barbara Ferrer, director of the Los Angeles County Department of Public Health, with the Pat Brown Legacy Award. The L.A. County Department of Public Health serves more than 10 million county residents. We also recognized frontline healthcare workers for their work and dedication during the COVID-19 pandemic. This event was hosted at the Millwick in Downtown L.A. Guests represented philanthropy, elected offices, nonprofits, the PBI Board, the Cal State LA campus community, and healthcare professionals.

STUDENT SPEAKER

Viviana Villafuerte

PBI Student Professional





VOICES OF L.A. SURVEYS

In late 2021, PBI, in partnership with the California Community Foundation, enhanced its racial and ethnic survey program to elevate the voices of residents of working-class communities of color. This program, combined with the Institute's multi-year survey program that explores the social and political orientations of the African American, Latina/o, Asian American and Pacific Islander (AAPI), and Jewish communities in Los Angeles County, are now known collectively as the PBI *Voices of LA Surveys*. This year, the Institute presented data from its Latina/o and AAPI surveys with key findings listed below.

AAPI SURVEY

- ▶ About 25% reported being a victim of hate crimes during the pandemic.
- ▶ Most said police funding should remain the same or increase.
- ▶ Homelessness and COVID-19 were reported as the most important issues facing L.A.
- ▶ Representation matters for AAPI voters.
- ▶ The pandemic hit the AAPI community hard, but especially young people.
- ▶ Two-thirds expressed worry about hate crimes.
- ▶ Many were motivated to take political action by their experiences with racial discrimination.
- ▶ The AAPI community has a strong sense of community cohesiveness.

LATINA/O SURVEY

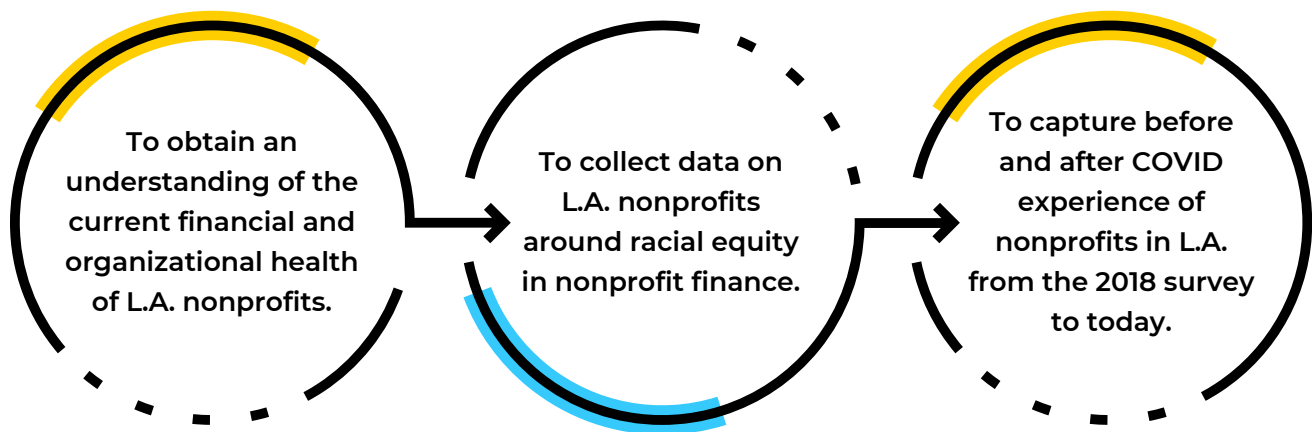
- ▶ Almost half (47%) of those surveyed lost their jobs or had hours cut during the pandemic.
- ▶ Half of households reported having \$500 or less in emergency savings.
- ▶ Over 80% said it is important to have Latina/o representation in public office.
- ▶ Latinos reported high levels of engagement in political and civic life, with friends and family as top political influences.
- ▶ Latinos did not have full trust in any level of government; most common answer was trusting government "some of the time."

STATE OF THE NONPROFIT SECTOR SURVEY

2022


In partnership with the Nonprofit Finance Fund (NFF), PBI took the lead on a survey of L.A. County nonprofits as part of NFF's State of the Nonprofit Sector national survey. NFF included an in-depth analysis of L.A.'s nonprofits to better understand their experiences and challenges.

SURVEY GOALS

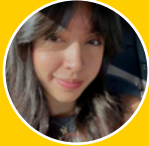


FINDINGS

L.A. nonprofits have an urgent need for full-cost funding, staffing support, and long-term financial sustainability in order to achieve their goals of advancing racial equity and providing services to those in need.

72% 
**INCREASED
SERVICE DEMAND**

YOUNG VOTER ENGAGEMENT



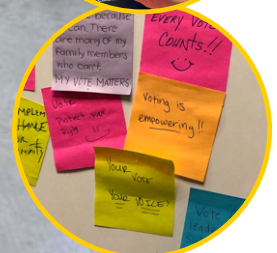
"It's important that our community comes together to support each other because there's strength in numbers and together we make an impact. Voting means we care about issues that affect us and we become a part of the conversation."

Mariah Garcia
ASI Civic Engagement Officer



"Every election, my family and I work at vote centers throughout the City of L.A. My mother often works as a Voting Inspector on Election Day. As a kid I would help my mom set up and close vote centers."

Oston Jembe
Cal State LA Student



Situated on the Cal State LA campus, PBI is positioned to provide meaningful opportunities for civic engagement and education to our community of 26,000 students from some of the most underserved communities in Los Angeles. In advance of the 2022 midterm elections, the Institute took part in nonpartisan activities that promoted young voter engagement, provided voter education, and helped to address the issues and questions around voting in our community to empower participation in civic life.

Youth Voice-Youth Vote Fellow

The Institute hosted a Youth Voice-Youth Vote fellow in fall 2022 as part of the LEAD California Community Engagement Student Fellowship. The student conducted community outreach in Southeast Los Angeles, assisted the League of Women Voters with outreach, and helped with voter engagement activities on the Cal State LA campus.



Rahel Gebre
Cal State LA YV-YV Fellow

CIVIC UNIVERSITY

Civic U© is a longstanding program essential to PBI's mission of fostering civically educated and engaged Angelenos.

Since its inception in collaboration with the Office of L.A. Mayor Eric Garcetti, Civic U© has offered uniquely tailored Civic U© programs to a variety of community members.

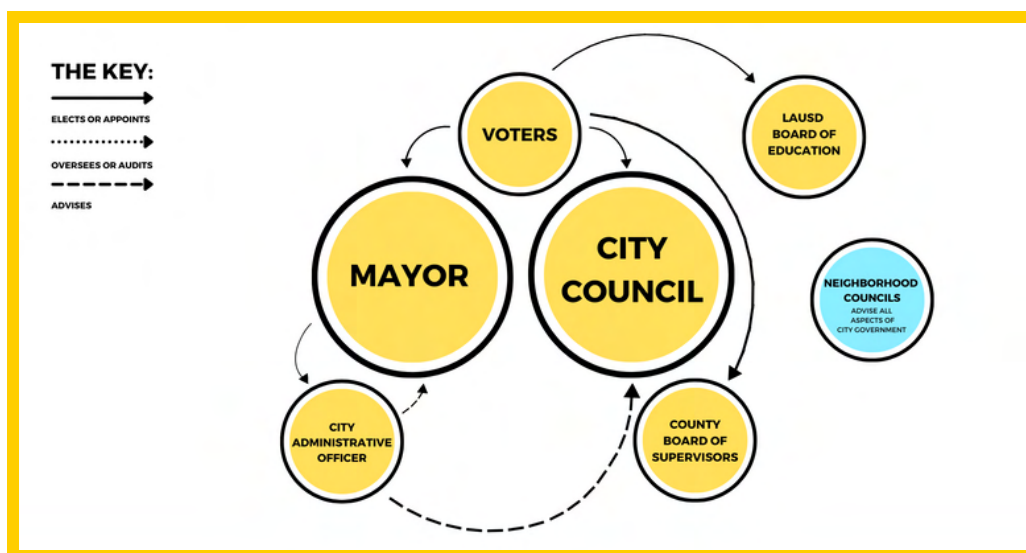
In 2023, the Institute plans to reinstate in-person Civic U© programs that facilitate active participation and learning.

HIGHLIGHT

EmpowerLA

In October 2022, the Institute hosted its second virtual Civic U© for Neighborhood Councils with EmpowerLA and the College of Professional and Global Education at Cal State LA (PaGE). Fifty-four participants received non-credit certificates from PaGE. L.A. Mayor Karen Bass will sign certificates for the 2022-23 cohort.

Session 1 Slide: Power at City Hall



Other Civic U© Presentations

- ▶ Center for Asian Americans United for Self Empowerment (CAUSE)
- ▶ L.A. City Department of Cultural Affairs
- ▶ Cal State LA Civic Action Fellows
- ▶ L.A. City Youth Council

CIVIC QUIZ

PBI releases monthly quizzes in partnership with the public affairs law firm Manatt, Phelps & Phillips, LLP, which take a closer look at important news and developments of the day. Past quiz topics have ranged from redistricting to primary elections. Receiving messages with scores or questions about the correct answers is always a highlight for PBI staff.

OVERVIEW

12 QUIZZES TOTAL

DISTRIBUTION

- Social Media
- Mailchimp
- PBI Website

QUIZMEISTERS

Randi Aho

Monserrat Ramirez-Mendoza

LANGUAGES

Produced in both English and Spanish

METRICS

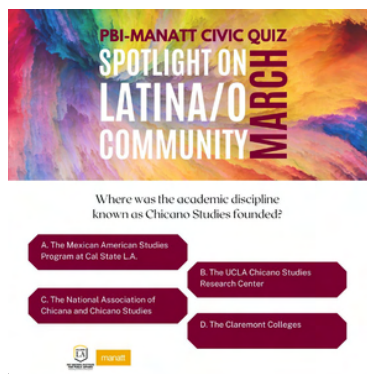
★ **55%**
AVERAGE SCORE

★ **35%**
OPEN RATE

★ **24%**
CLICKS PER
UNIQUE OPENS

★ **1,804**
TOTAL UNIQUE
OPENS

★ **210**
OF TIMES QUIZ
WAS COMPLETED



QUIZ WITH HIGHEST OVERALL ENGAGEMENT

James R. Galbraith FELLOWSHIP

“

Public Affairs is the juice of civic engagement. Of course, an informed citizenry is necessary to make democracy function and thrive. This program gives students a further opportunity to engage inside the public policy arena itself. Seeing is believing.

-James R. Galbraith

”



Alumni Mixer | February 2022

OUR 2022 FELLOWS



Rahel Gebre



Lizeth Hernandez



Mary-Claire Sei

For 10 weeks, Galbraith Fellows are placed in the Los Angeles offices of statewide and national public officials, where they learn about the policy implementation process. Placements included the offices of U.S. Senator Alex Padilla, Governor Gavin Newsom, Attorney General Rob Bonta, and Assembly Speaker Anthony Rendon.

EVENTS

2022 LA MAYORAL DEBATE



Five mayoral candidates took the stage at Cal State LA on May 1, 2022, for a debate on Los Angeles' most pressing issues. From homelessness to green energy, candidates presented their ideas to viewers watching the debate live on all ABC7 platforms. This debate was organized through a partnership among PBI, the League of Women Voters of Greater Los Angeles, and ABC7. The partners have been conducting debates on campus since 2013.

A GREEN FUTURE FOR SELA

In partnership with Southern California Edison and the Southeast Los Angeles (SELA) Collaborative, PBI hosted a virtual event that asked: What might a green future look like in SELA? Our panel of experts discussed the possibilities and challenges for SELA stakeholders to ensure the federal Infrastructure Investment and Jobs Act funding goes to projects that benefit their communities in meaningful ways that they have determined.



THE HOW AND WHY OF VOTING



Dr. Raphael Sonenshein was joined by the L.A. County Registrar-Recorder/County Clerk Dean Logan, and the Executive Director of the League of Women Voters of Greater Los Angeles Dr. Ninochka McTaggart to discuss the voting process and answer questions from the audience about the 2022 General Election with a focus on young voter engagement.

FOCUS ON L.A. GOVERNANCE

By Raphael J. Sonenshein, Ph.D.

MAYOR'S EMERGENCY POWERS

On her first day in office, Los Angeles Mayor Karen Bass declared a local emergency regarding the homelessness crisis. [Read the full essay on emergency powers.](#) Patt Morrison drew on this essay in the Los Angeles Times article, "[Riots, earthquakes, now homelessness - why and how L.A. mayors declare emergencies.](#)"

- How has the L.A. City Charter been reformed to address crises affecting the city of L.A.?
 - Emergency powers include natural disasters and public health crises.
 - Declaring the local emergency must be renewed every 30 days by the city council.
-

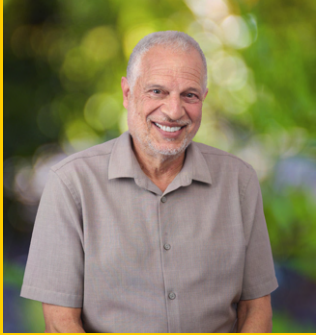
CRISIS AT L.A. CITY COUNCIL: A SELF-GUIDED EXPLAINER FOR THE LA COMMUNITY

On October 9, 2022, the Los Angeles Times reported on a leaked recording of a conversation among three Los Angeles City Council members and a labor leader that included racist and disparaging remarks. The uproar that followed led to numerous changes in the composition and leadership of the city council. This self-guided explainer goes through those changes.

[View the full presentation on Crisis at LA City Council.](#)

- How the council looked prior to October 10 and since then.
- What does the city charter say about filling council vacancies?
- What are some of the reform ideas that have surfaced in recent months?

PBI TEAM



Raphael J. Sonenshein, Ph.D.
Executive Director



Tatiana Fernandez
Executive Assistant



Randi Aho
Civic Education
Program Manager



Monserrat Ramirez-Mendoza
Administrative Assistant



Lizeth Hernandez
Student Professional



Annie Ojeda
Student Professional



Yamireth Solis
Student Professional



Viviana Villafuerte
Student Professional



Francisco Jasso, Ph.D.
Research Associate



Nathan Chan, Ph.D.
Research Associate

Social Media

 pat_brown_institute

 PBI

 PatBrownInstitute



NATIONAL VOTER REGISTRATION DAY





*Unleashing
The power of
participation*



**PAT BROWN INSTITUTE
FOR PUBLIC AFFAIRS**
Unleashing the Power of Participation

**Click here to visit
our website!**