



DISCOVER
CREATE
ENGAGE
TRANSFORM

CALIFORNIA STATE UNIVERSITY, LOS ANGELES

UNIVERSITY LIBRARY
STRATEGIC DIRECTIONS





DEAN'S STATEMENT

The University Library is central to the successful achievement of Cal State LA's mission of cultivating and amplifying our students' unique talents, diverse life experiences, and intellect through engaged teaching, learning, scholarship, research and public service. We seek to align our mission, vision and values with those of the University while also mapping an exciting and ambitious direction for the University Library's future.

To be responsive to a university that is experiencing continuous change and increased engagement, the University Library will embrace strategic risk-taking as the path to innovation. We will embrace collaboration and diversity of thought as we respond to a changing information landscape, new and emerging technologies, and a greater focus on supporting academic success.

Four foundational strategic directions—discover, create, engage and transform—provide a framework that will inform our decision-making and guide the future direction of the University Library. These strategic directions do not attempt to convey all of the library's activities. Rather, they identify areas of emphasis between 2018 and 2021 that will allow us to build on the library's historical strengths, while transforming the library's role as the platform for student success and faculty innovation, a hub for strategic partnerships, and a responsive and dynamic organization that adapts to changing user needs and expectations.

Juan Carlos Rodríguez
Dean, University Library

MISSION

Advance intellectual discovery, stimulate creativity, inspire learning and transform our diverse and engaged communities by connecting people to knowledge, providing learner-centered spaces, and delivering innovative and responsive services.

VISION

The University Library will be a transformative physical and digital center of intellectual exploration, knowledge creation, and scholarly and creative engagement that will prepare students to be lifelong learners and information-literate global citizens in an increasingly digital environment.





Student Success

We put our students' academic success, career-readiness, and well-being at the center of everything we do.

Service Excellence

We are learner-centered and strive to provide a high quality user experience by deeply understanding our user's needs, anticipating our user's changing needs and exceeding our user's expectations.

Collaboration

We recognize that in a changing and interdisciplinary academic environment, the need to advance learning, scholarship and research benefits from collaborations with individuals, departments, colleges and the community at the local, national and global level.

Creativity, Innovation & Risk Taking

We encourage and support innovation, risk-taking, and the development of new ideas, programs, tools, services, technologies and spaces that advance the mission of the University Library.

Diversity & Inclusion

We provide an environment where all are welcome and everyone belongs. We are responsive in providing spaces, services, resources and programs that value and celebrate diversity.



Professional Growth

We foster a supportive work environment that encourages library faculty, staff and student assistants to continuously develop and expand their knowledge and expertise.

Transparent Decision-Making

We make data-informed, evidence-based decisions and are open and inclusive in our approach and communication.

Mutual Respect & Collegiality

We cultivate a positive work environment where everyone commits to fostering a culture of respect, trust, integrity and openness.

Core Values of Librarianship

We support the American Library Association's Core Values of Librarianship including equitable access, user privacy and confidentiality, diversity, lifelong learning, intellectual freedom, the public good, preservation, professionalism, service, and social responsibility.

STRATEGIC DIRECTION 1

DISCOVER

Advance discovery and connect the Cal State LA community with knowledge by increasing the visibility, use, and relevance of library resources and services to support teaching, learning, research and creative activities.



COLLECTIONS

- Ensure that library resources and services are easy to find, access and use.

SERVICES & TOOLS

- Provide services and tools that are more easily discoverable—in the building and on the web.



SPACES

- Provide wayfinding tools to guide students, faculty, and visitors to the materials, spaces, and services they need.

ORGANIZATION

- Build an outreach and marketing program that effectively informs the campus community about library resources and services.
- Develop a library-wide philosophy and strategy for creating a culture of great service and continuous improvement.

STRATEGIC DIRECTION 2

CREATE

**Position the University Library as the campus hub
for knowledge creation and the development
of innovative and strategic partnerships
that support student success.**

multThree
 $x * y * z$

$a \rightarrow a \rightarrow a \rightarrow a$

multThree ?
 $z * y * z$

~~$a \rightarrow a \rightarrow a$~~

multThree ? ?
 $z * z * z$

$a \rightarrow a$



COLLECTIONS

- Develop a dynamic collection development, management, and assessment strategy to support the University's curricular and faculty research needs.
- Leverage institutional relationships and new tools to expand and improve resource sharing.

SERVICES & TOOLS

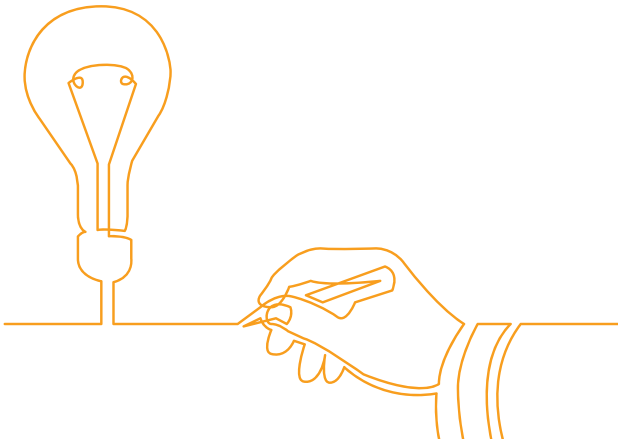
- Introduce new services, specializations, and technologies to support creation, engaged learning, research, exploration, and innovation.

SPACES

- Serve as a campus hub for collaborative learning, research, and scholarship across disciplinary boundaries.

ORGANIZATION

- Create and foster an organizational culture that is open to change and experimentation.



STRATEGIC DIRECTION 3

ENGAGE

Deepen scholarly engagement with the campus community through the development of learner-centered services, technologies, spaces, events, programs and exhibits.



$x \frac{dy}{dx} + y = \frac{1}{y} = y^{-1}$ $\frac{dy}{dx} + py = Q(x)$
 $u = x^{-2}y$ $y = \frac{1}{x^2}$
 $\frac{dy}{dx} + \frac{y}{x} = \frac{1}{x^3}$ $\rightarrow P(x) = \frac{1}{x}$
 $u = y/x^2$ $y = x^2 u$ $u'x + u = \frac{1}{x^3}$
 $\frac{dy}{dx} = \frac{1}{x^3} - \frac{y}{x}$ $(x^2 u)' = \frac{1}{x^3} - \frac{x^2 u}{x}$
 $= \frac{1}{x^3} - \frac{1}{x} u$ $x^2 u' + 2xu = \frac{1}{x^3} - u$
 $x^2 u' + 3xu = \frac{1}{x^3}$ $x^2 u' + 3xu = \frac{1}{x^3}$
 $u' + \frac{3}{x}u = \frac{1}{x^5}$ $u' + \frac{3}{x}u = \frac{1}{x^5}$
 $u = \frac{1}{x^2}$ $u = \frac{1}{x^2}$
 $y = \frac{1}{x}$



COLLECTIONS

- Explore new partnerships, tools, and services to facilitate the availability of affordable learning resources.
- Expand student engagement with primary resources by increasing awareness through the faculty liaison program, exhibits, and presentations.

SERVICES & TOOLS

- Enhance information literacy with a programmatic approach that fosters collaboration and utilizes new and emerging technologies.

SPACES

- Promote University and community engagement by providing additional spaces for group collaboration, exhibits and events.

ORGANIZATION

- Ensure that services, technologies, spaces, and programming meet users' needs by adding user experience and assessment expertise to the library.



STRATEGIC DIRECTION 4

TRANSFORM

Transform the library experience and the role of library professionals to advance research, digital scholarship, teaching, learning and student success.



COLLECTIONS

- Strengthen the library's capacity to digitize and preserve unique collections so they may be more accessible.
- Promote and preserve the intellectual output and research assets of the campus community.

SERVICES & TOOLS

- Assume a leadership role in advancing open scholarship and research at the University by supporting and promoting open access, open data, and open educational resources.
- Explore collaborative opportunities and increase participation in University efforts to advance digital scholarship and research initiatives.

SPACES

- Transform spaces into more flexible, comfortable, welcoming and inclusive environments conducive to learning, collaboration, study and reflection.
- Participate in university-wide efforts to invest in upgrading and improving buildings and infrastructure.

ORGANIZATION

- Bolster the professional development of all library personnel to meet the demands of new strategic initiatives.
- Align organizational structure with library and university directions and priorities.
- Diversify funding sources to obtain resources needed to transform the library.





**JOHN F. KENNEDY
MEMORIAL LIBRARY**

California State University, Los Angeles
5151 State University Drive
Los Angeles, CA 90032-8300

323-343-3988
calstatela.edu/library