



Honors Programs

National Honor Societies

Cal State L.A. is home to chapters of more than 20 national honor societies. These special societies recognize students who demonstrate superior scholarship and leadership in their respective academic areas. A minimum grade point average, ranging from 3.00 to 3.85, is required for initiation into national honor societies.

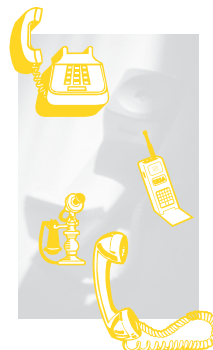
National Honor Societies	Discipline(s)
Alpha Kappa Delta, Iota Chapter	Sociology
Alpha Tau Delta, Phi Chapter	Nursing
Beta Alpha Psi, Beta Lambda Chapter	Accounting
Beta Beta Beta, Epsilon Theta Chapter	Biological Sciences
Beta Gamma Sigma, Eta Chapter	Business
Chi Epsilon, Cal State L.A. Chapter	Civil Engineering
Delta Pi Epsilon, Beta Pi Chapter	Business Education
Epsilon Pi Tau, Alpha Psi Chapter	Technology
Eta Kappa Nu, Epsilon Nu Chapter	Electrical Engineerin
Golden Key, Cal State L.A. Chapter	All disciplines
Kappa Delta Pi, Iota Phi Chapter	Education
Kappa Pi, Gamma Tau Chapter	Art
Omicron Delta Epsilon, Eta of California	Economics
Phi Alpha Theta, Eta Xi Chapter	History
Phi Beta Delta, Zeta Chapter	International Schola
Phi Delta Kappa, Campus Chapter No. 121	Education
Phi Kappa Phi, Cal State L.A. Chapter	All disciplines
Pi Delta Phi, Epsilon Nu Chapter	French
Pi Lambda Theta, Alpha Psi Chapter	Education
Pi Sigma Alpha, Gamma Omega Chapter	Political Science
Pi Tau Sigma, Sigma Kappa Chapter	Mechanical Enginee
Psi Chi, Cal State L.A. Chapter	Psychology
Sigma Delta Pi, Gamma Psi Chapter	Spanish
Sigma Theta Tau	Nursing
Tau Beta Pi, California Iota Chapter	Engineering

University Honors Convocation

Every spring, Cal State L.A. recognizes exceptional students at the annual University Honors Convocation. Dean's List honorees, recipients of scholarships, grants, freshmen with honors at entrance, and general education honors program participants come together to celebrate their academic achievements with their friends and family.

Find out more about these and other programs designed to enhance your undergraduate academic experience at Cal State L.A.!

Questions? Contact us!



All numbers are in the 323 area code:

Admissions	343-3901	International Students	343-3170
Athletics	343-3080	Orientation	343-3195
Campus Tours	343-3175	Outreach and Recruitment	343-2752
Educational Opportunity Program (EOP)	343-4367	President's Scholars	343-3131
Financial Aid	343-6260	Registrar	343-3940
General Education Honors Program	343-4960	Scholarship Information	343-3266
Housing Services	343-4800	Student Development and Programs	343-5110
		Testing	343-3160

or visit us on the Web at www.calstatela.edu



Soar with honors

Cal State L.A.

A comprehensive university at the heart of California's largest city, Cal State L.A.'s 175-acre hilltop campus is just five miles east of Los Angeles' civic and cultural center. Approximately 21,000 students—reflecting our society's diversity—study under an award-winning faculty toward more than 115 (61 undergraduate and 54 graduate) degree programs.

Honors Programs

Cal State L.A.'s Honors programs create a diverse, innovative, and intellectually enriching environment for exceptional students who wish to challenge themselves to reach their full potential through rewarding educational experiences.

Start at the top

Seize the opportunity and enter the university with honors! First-time freshmen who have a cumulative high school grade point average of 3.5 or above receive the distinction of receiving **honors at entrance**.

President's Scholars

Interested in a presidential full-ride? If you are a California resident and graduating high school senior with a cumulative GPA of at least 3.75 and a minimum SAT Reasoning score of 1200 (using Critical Reasoning and Math scores only, or ACT score of 27), you may be eligible for the **President's Scholars Program**. President's Scholars receive a \$20,000 scholarship over four years (\$5,000 per year) and many other benefits. For additional information, call (323) 343-3131.

General Education Honors Program

Challenge yourself by joining the **General Education Honors Program**, which brings together the finest professors and the most gifted students

to provide a specialized general education curriculum that is challenging, creative, and innovative. To qualify for entrance into the Program, one must be eligible to enroll in, or have completed, college-level English and Math courses. Incoming freshmen must have a 3.3 or above cumulative high school grade point average, or a minimum SAT Reasoning score of 1200 (using Critical Reasoning and Math scores only) (or ACT score of 22). Lower-division transfer students must have a 3.3 or above GPA and at least six lower-division GE courses remaining to complete at the university. For more information, call (323) 343-4960.

Departmental Honors Programs

Enhance your learning experience by participating in departmental honors programs, offered in anthropology, biology, chemistry, child development and physics. Upper division students who maintain a superior grade point average and have faculty recommendations are permitted to enroll in honors programs in their elected major. Please contact the individual departments for more information.

Minority Biomedical Research Support (MBRS)

The MBRS Program is designed to increase the pool of underrepresented minority biomedical scientists. MBRS provides annual salaries for undergraduate and graduate students to participate in original research projects with experienced faculty mentors. To learn more, contact the MBRS office at (323) 343-2395.

Research Undergraduate Science Honors (RUSH)

The RUSH program is part of the Minority Biomedical Research Support (MBRS) Program targeting freshmen minority students. Freshmen Presidential RUSH Scholars receive a research salary and university fees for the first year. For more information about the MBRS-RUSH program, contact the MBRS office at (323) 343-2395.

Minority Access to Research Careers (MARC)

The MARC Honors Undergraduate Research Training Program offers academically accomplished upper division college students (with at least a 3.0 cumulative grade point average) in the natural and behavior sciences the opportunity to gain invaluable experience that will prepare you to compete for entry into Ph.D. or M.D.-Ph.D. programs in the biomedical sciences. To learn more, call (323) 343-2300.

National Honor Societies

Cal State L.A. is home to chapters of more than 20 national honor societies. These special societies recognize students who demonstrate superior scholarship and leadership in their respective academic areas. A minimum grade point average, ranging from 3.00 to 3.85, is required for initiation into national honor societies.

