



# FRESHMEN Admissions Information

## Applying to the University

All first-time freshmen who are applying for part-time or full-time undergraduate study must file a complete admission application before the posted deadline. You may apply on-line at [www.csumentor.edu](http://www.csumentor.edu)

An application fee of \$55 in U.S. funds, payable to the California State University, is required for each application filed. The fee is NON-REFUNDABLE and may not be transferred to another term at any campus. Fee waivers are available to those who qualify.

## Requirements for First-time Freshmen

You will qualify for admission as a first-time freshman if you meet all of the following:

- are a high school graduate,
- have completed—with a 'C' or better—after the 'A-G' high school college preparatory courses, *and*
- have a qualified eligibility index.

*Note: Some students, including International Students, must also take the TOEFL (Test of English as a Foreign Language).*

## A-G Subject Requirements

To satisfy the college preparatory course requirement, you must complete a minimum of 15 units (30 semester units) in the following 'A-G' subject areas.

- A) Social Science, 2 years: one year of U.S. history or U.S. history and American government, and one year of social science

- B) English, 4 years: composition and literature designated as college preparatory
- C) Mathematics, 3 years: Algebra I, Geometry, Algebra II, integrated math, and advanced mathematics
- D) Laboratory science, 2 years: at least one biological science and one physical science
- E) Language other than English, (formerly foreign language), 2 years; in the same language
- F) Visual and Performing Arts, 1 year sequence course: art, dance, drama/theater or music
- G) College-preparatory electives, 1 year: any additional courses (not previously listed) that are included in the UC 'A-G' list.

## President's Scholars

Interested in a presidential full-ride? If you are a California resident and graduating high school senior with a cumulative GPA of at least 3.75 and a SAT Reasoning Test (Math and Critical Thinking) score of 1200 (or ACT score of 27), you may be eligible for the **President's Scholars Program**. President's Scholars receive a \$20,000 scholarship over four years (\$5,000 per year) and many other benefits. For additional information, call (323) 343-3131.

## Honors Programs

Cal State L.A.'s Honors programs create a diverse, innovative, and intellectually enriching environment for exceptional students who wish to challenge themselves to reach their full potential through rewarding educational experiences.

## ELIGIBILITY INDEX

The Eligibility index is calculated by either:

- Multiplying your GPA by 800 and adding your total SAT I score; or
- Multiplying your GPA by 200 and adding ten times your ACT Composite score.

ELIGIBILITY INDEX TABLE FOR CALIFORNIA HIGH SCHOOL GRADUATES OR RESIDENTS OF CALIFORNIA\*

HS GPA	ACT SCORE	SAT RT SCORE	HS GPA	ACT SCORE	SAT RT SCORE
3.0+	any score	qualifies	2.49	20	910
2.99	10	510	2.48	20	920
2.98	10	520	2.47	20	930
2.97	10	530	2.46	21	940
2.96	11	540	2.45	21	940
2.95	11	540	2.44	21	950
2.94	11	550	2.43	21	960
2.93	11	560	2.42	21	970
2.92	11	570	2.41	22	980
2.91	12	580	2.40	22	980
2.90	12	580	2.39	22	990
2.89	12	590	2.38	22	1000
2.88	12	600	2.37	22	1010
2.87	12	610	2.36	23	1020
2.86	13	620	2.35	23	1020
2.85	13	620	2.34	23	1030
2.84	13	630	2.33	23	1040
2.83	13	640	2.32	23	1050
2.82	13	650	2.31	24	1060
2.81	14	660	2.30	24	1060
2.80	14	660	2.29	24	1070
2.79	14	670	2.28	24	1080
2.78	14	680	2.27	24	1090
2.77	14	690	2.26	25	1100
2.76	15	700	2.25	25	1100
2.75	15	700	2.24	25	1110
2.74	15	710	2.23	25	1120
2.73	15	720	2.22	25	1130
2.72	15	730	2.21	26	1140
2.71	16	740	2.20	26	1140
2.70	16	740	2.19	26	1150
2.69	16	750	2.18	26	1160
2.68	16	760	2.17	26	1170
2.67	16	770	2.16	27	1180
2.66	17	780	2.15	27	1180
2.65	17	780	2.14	27	1190
2.64	17	790	2.13	27	1200
2.63	17	800	2.12	27	1210
2.62	17	810	2.11	28	1220
2.61	18	820	2.10	28	1220
2.60	18	820	2.09	28	1230
2.59	18	830	2.08	28	1240
2.58	18	840	2.07	28	1250
2.57	18	850	2.06	29	1260
2.56	19	860	2.05	29	1260
2.55	19	860	2.04	29	1270
2.54	19	870	2.03	29	1280
2.53	19	880	2.02	29	1290
2.52	19	890	2.01	30	1300
2.51	20	900	2.00	30	1300
2.50	20	900			

NOTE: Below 2.00 does not qualify for regular admission. GPA is calculated using grades earned in A-G courses taken in the 10th-12th grades.

SAT Reasoning Test (RT) score=(combination of mathematics and critical reading sections).

For more information, visit our website or call us at:

Office of Outreach and Recruitment

(323) 343-2752 • FAX: (323) 343-3888 • [www.calstatela.edu](http://www.calstatela.edu)



# Eligibility Index

The eligibility index is the combination of your high school grade point average and your test score on either the American College Test (ACT) or the Scholastic Assessment Test (SAT I). Your grade point average is based only on approved college prep "A-G" courses taken in the 10th, 11th, and 12th grades, not counting military science and physical education.

The Eligibility index is calculated by either:

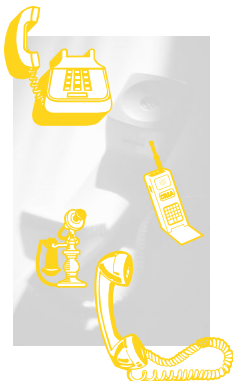
- Multiplying your GPA by 800 and adding your Total SAT I score; or
- Multiplying your GPA by 200 and adding ten times your ACT Composite score.

## ELIGIBILITY INDEX TABLE FOR CALIFORNIA HIGH SCHOOL GRADUATES OR RESIDENTS OF CALIFORNIA\*

GPA	ACT SCORE	SAT I SCORE	GPA	ACT SCORE	SAT I SCORE	GPA	ACT SCORE	SAT I SCORE	GPA	ACT SCORE	SAT I SCORE	GPA	ACT SCORE	SAT I SCORE
3.0+	any score qualifies		2.80	14	660	2.60	18	820	2.40	22	980	2.20	26	1140
2.99	10	510	2.79	14	670	2.59	18	830	2.39	22	990	2.19	26	1150
2.98	10	520	2.78	14	680	2.58	18	840	2.38	22	1000	2.18	26	1160
2.97	10	530	2.77	14	690	2.57	18	850	2.37	22	1010	2.17	26	1170
2.96	11	540	2.76	15	700	2.56	19	860	2.36	23	1020	2.16	27	1180
2.95	11	540	2.75	15	700	2.55	19	860	2.35	23	1020	2.15	27	1180
2.94	11	550	2.74	15	710	2.54	19	870	2.34	23	1030	2.14	27	1190
2.93	11	560	2.73	15	720	2.53	19	880	2.33	23	1040	2.13	27	1200
2.92	11	570	2.72	15	730	2.52	19	890	2.32	23	1050	2.12	27	1210
2.91	12	580	2.71	16	740	2.51	20	900	2.31	24	1060	2.11	28	1220
2.90	12	580	2.70	16	740	2.50	20	900	2.30	24	1060	2.10	28	1220
2.89	12	590	2.69	16	750	2.49	20	910	2.29	24	1070	2.09	28	1230
2.88	12	600	2.68	16	760	2.48	20	920	2.28	24	1080	2.08	28	1240
2.87	12	610	2.67	16	770	2.47	20	930	2.27	24	1090	2.07	28	1250
2.86	13	620	2.66	17	780	2.46	21	940	2.26	25	1100	2.06	29	1260
2.85	13	620	2.65	17	780	2.45	21	940	2.25	25	1100	2.05	29	1260
2.84	13	630	2.64	17	790	2.44	21	950	2.24	25	1110	2.04	29	1270
2.83	13	640	2.63	17	800	2.43	21	960	2.23	25	1120	2.03	29	1280
2.82	13	650	2.62	17	810	2.42	21	970	2.22	25	1130	2.02	29	1290
2.81	14	660	2.61	18	820	2.41	22	980	2.21	26	1140	2.01	30	1300
												2.00	30	1300

NOTE: Below 2.00 does not qualify for regular admission.

## Questions? Contact us!



All numbers are in the 323 area code:

Admissions .....	343-3901	International Students .....	343-3170
Athletics .....	343-3080	Orientation .....	343-3195
Campus Tours .....	343-3175	Outreach and Recruitment .....	343-CSLA
Educational Opportunity Program (EOP) .....	343-4367	Registrar .....	343-3940
Financial Aid .....	343-1784	Student Information Center .....	343-3178
Housing Services .....	343-4800	Testing .....	343-3160