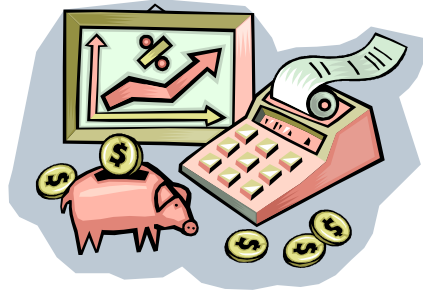


The Total Compensation Calculator



The Chancellor's Office has announced that the Total Compensation Calculator tool is available for use by CSU employees. By entering your salary and benefits information, the tool will calculate the total CSU compensation package for you.

You will be asked questions regarding your benefits and compensation. Once you provide the pertinent information, the Total Compensation Calculator will display the CSU contributions made to each benefit plan, the total value of benefits, the total compensation (salary + benefits), and the total benefits as a percentage of salary. You will also be provided the estimated daily value of paid time off benefits.

The tool is accessible through the following link:

http://www.calstate.edu/Benefits/Compensation/Compensation_Calculator.aspx

Please be certain to enter the correct employee group, eligibility status or benefit plan. Incorrect data entry on your part will result in the calculator providing data that is different than your understanding. If there is a difference between your understanding of your benefit plans and the calculator, please contact the Benefits Office at ext. 3-3651. The official plan documents govern.