

# EAGLE PRIDE TIMES

## CSULA HOUSING SERVICES

5300 Paseo Rancho Castilla  
Los Angeles, CA 90032  
Office: (323)343-4800  
Fax: (323)343-6465  
[www.calstatela.edu/univ/housing](http://www.calstatela.edu/univ/housing)

ISSUE 10

JANUARY 2011

### INSIDE THIS ISSUE:

Federal Student Aid 101	1
Golden Eagles Apartments	1
Spelling Bee Program	1
CSU International Program	2
Valentine Dedications	2
I Love the Meal Plan Because...	3
Associated Students, Inc.	3
Student Discount Corner	3
Graduation Initiative	4
Important Deadlines	4

## Federal Student Aid 101

You have probably already heard that the CSU's board of trustees have raised tuition for CSU campuses by 9% (or \$498) for the 2012-2013 academic year. With budget cuts and the economic crisis, it is more important than ever to keep up with deadlines and requirements regarding financial aid for your education.

The Free Application for Federal Student Aid (FAFSA) is available for the 2012-2013 academic year as of January 1st. Do not wait until last minute to submit your FAFSA! The

Priority Funding Consideration Deadline is on March 2nd, 2012. We highly recommend you complete it as soon as possible to ensure you are processed on a timely manner. Students who submit their FAFSA after March 2nd will be considered for remaining available funds.

The Center for Student Financial Aid is offering FAFSA workshops from Janu-



ary - March and all students are welcome to attend. Stop by to have your questions answered and for assistance on filling out your FAFSA correctly. All workshops will be held in the University - Student Union.

### Wed. Jan 18

- 12:00pm-1:30pm. San Gabriel Room 313

- 2:30pm-4:00pm. San Gabriel Room 313

### Tues. Jan 24

- 12:00pm-1:30pm. San Gabriel Room 313

(Continued on page 4)

## Golden Eagles Apartments

Graduate students and seniors, space is still available for the Golden Eagles Apartments (GEA)! Most apartments are single occupancy in a two bedroom apartment or three bedroom suite and limited double occupancy in a one bedroom apartment. Space is limited and on a first-come first-served

basis. If you were approved to transfer to the GEA, stay in your current apartment until we notify you. Transfers will begin in the winter quarter.

For more information and to verify that you are eligible for this great opportunity, stop by

the Housing Services office or call (323)343-4800. You can also visit the Graduate Housing website for rates, floor plans and additional information at [www.calstatela.edu/univ/housing/Graduate\\_Housing.php](http://www.calstatela.edu/univ/housing/Graduate_Housing.php) Pick up a Transfer and Single Request Forms today!

## Spelling Bee Program

Don't forget to stop by the Phase II Lounge on January 17 at 7pm to be part of this interactive program. If you are interested in participating, contact RA Natasha at nbu-

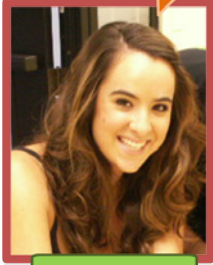
rana@calstatela.edu or leave your contact information with the RA on duty at the Community Information Center (CIC). A resident will win a Barnes & Noble gift card.





# I Love the Meal Plan Because...

"The Ice Cream"



Kimberlee Gonzales

"Plenty of food. Convenient"



Hyung-Yong Guk

"Its convenient. Don't have to wash dishes"



Erica Chapman

"The Pasta"



Peter Wurster

# Associated Students, Inc.



"...For the Students, by the Students!"

Interested in student government? Want to make a difference in your campus? Associated Students, Inc. (ASI) is the officially recognized voice of the students at Cal State L.A.

ASI gives students an opportunity to gain experience and training in political participation and community leadership. Through a variety of campus events, ASI and its representatives aim to stimulate the educational, social, physical and cultural well being of the university community.

Apply for a student government position and make a difference in the Cal State L.A. community. To find out how to get involved and what ASI is doing to solve issues concerning you as a student, visit [asicula.org](http://asicula.org) or stop by their office in the University-Student Union on the 2<sup>nd</sup> floor, room 203.

**iFLY INDOOR SKYDIVING**

**STUDENT DISCOUNT**

**Experiential Flight**

- 1 Flight experience
- Training and gear rental
- One on one guidance from a certified Flight Instructor
- Personalized Flight Certificate

**\$25.00 Each**

**Additional Same Day Flight - \$15.00**

Use Promo Code: **STUDISC**

Valid Mon-Thur Only. Must present valid student ID. Please visit our website for terms and conditions.

**818-985-4359**  
**IFLYHOLLYWOOD.COM**

# Student Discount Corner

**iFly Indoor Skydiving**, located at Universal Studios City Walk, allows you to get the ultimate flight experience while undergoing excitement, adrenaline and adventure! iFly Indoor Skydiving offers student discounts on the Experiential Flight Package with a valid student ID. Book your flight at [iFlyHollywood.com](http://iFlyHollywood.com) with promo code **STUDISC** or visit them at 1000 Universal Studios Blvd. Bldg. 6520, Suite 1, Universal City. For more info on this fun experience call iFly Hollywood

at (818)985-iFLY. Share your skydiving experience with us and you may featured on the next issue of the newsletter to [maria@cslanet.calstatela.edu](mailto:maria@cslanet.calstatela.edu).

**Meal Plan**  
Sign up for the Winter Meal Plan. Stop by the Housing Services office or sign up online at [www.calstatela.edu/univ/housing/mealplan.php](http://www.calstatela.edu/univ/housing/mealplan.php). **Reminder**, meals return Jan. 9th for the Winter quarter.

**Winter Quarter 2012**  
Classes begin Monday, January 9, 2012.

**RHA Meetings**  
Residence Hall Association meetings will resume on Wed. January 11, @ 8 pm in the Ph. II Conference Rm.

**Grocery Runs**  
10am-1pm. Return trips only: 1pm-2pm. Meet in front of the Phase II Mail Room.  
**January 7, 21**

# Resident Advisor Applications



Resident Advisor (RA) Applications will come out in January, so keep an eye out for upcoming announcements.

# Graduation Initiative



## **Dacia Weir, Freshman**

Dacia Weir is a first year psychology freshman from Temecula, California. She came to Cal State L.A. and now has a dance agent. Aside from graduating, one of her main goals is to be part of the entertainment industry. Although she is an aspiring actress, she is mainly a dancer and has made appearances on shows like Disney Channel's *Hannah Montana* and Nickelodeon's *Dance on Sunset*.

Dacia's main obstacle are her finances. Although she gets financial aid, she is constantly looking for scholarships in order to meet her expenses. Managing her budget is not easy. She has had to train herself to say "no" and even cut down on food. "I have to get what I need, not what I want".

## **Tasneem Noor, Programs Coordinator, ASI**

Tasneem Noor is the Programs Coordinator for Associated Students, Inc. With an open door policy, she works with about 30 student representatives and student assistants advising them on meetings, programs, event planning and leadership. Having one-on-ones with students allows her to have informal engagement with her students to also advise in school and personal concerns. To help students toward their goals for graduation, Tasneem's main objective is to raise their sense of awareness and advise students in areas like time management, the impact of their choices, and their priorities. When a student is struggling with school, she tells them, "Do your best and don't worry about being the best."



# Federal Student Aid 101

(Continued from page 1)

- 2:30pm-4:00pm. San Gabriel Room 313

## **Thur. Jan 26**

- 12:00pm-1:30pm. San Gabriel Room 313
- 2:30pm-4:00pm. Montebello Room 309

After completing your FAFSA online, remember to log on to GET on a regular basis and review your 'To Do List'. You will receive notifications from the Financial Aid office

if any supplemental material is needed from you. The Financial Aid office will not process your financial aid package until all forms are submitted.

For the complete schedule of the FAFSA workshops visit [www.calstatela.edu/univ/finaid/](http://www.calstatela.edu/univ/finaid/) or call (323)343-6260 for more information. To apply for FAFSA online visit [www.fafsa.ed.gov](http://www.fafsa.ed.gov).

# Important Deadlines

**January 1, 2012** - Rent Due for Continuing residents

**January 1, 2012** - FAFSA becomes available online

**January 2, 2012** - New Year's Day observed; campus closed

**January 5, 2012** - Winter Move In (CSULA students)

**January 9, 2012** - Winter Move In (ELP students)

**January 9, 2012** - Winter quarter classes begin

**January 9, 2012** - Winter Meal Plan begins

**January 16, 2012** - Martin Luther King Holiday; campus closed

**January 17, 2012** - No Record Drop deadline

**January 18, 2012** - "W" Withdrawal period begins

**January 19, 2012** - Last day to pay tuition fee payment and ensure enrollment by the ADD Deadline.

**January 23, 2012** - Last day to Add classes for the quarter.

**January 26, 2012** - Deadline for reinstatement of Summer 2011 disqualified students into Fall 2011 classes.



## **SUBMISSIONS**

If you would like to make a submission to the newsletter, please email your article to: [maria@cslanet.calstatela.edu](mailto:maria@cslanet.calstatela.edu).