

The Emeritimes

Official Publication of The Emeriti Association, California State University, Los Angeles

Volume XVI, Number 1

Fall 1994

Gala Event to Mark Luckman Opening

On Wed., Nov. 9, the Cal State L.A. community will experience a rare treat... the **Gala Grand Opening of the Harriet and Charles Luckman Fine Arts Complex**. A spectacular evening is planned that will be highlighted by a concert by the Los Angeles Philharmonic Orchestra, under the baton of its talented music director, Esa-Pekka Salonen.

Before the concert, several inaugural activities will take place, including the official ribbon-cutting and a dramatic lighting ceremony, during which spectators will witness the illumination of the Luckman theatre and will enter for the historic inaugural concert. Honorary chair of the event is **Anne Munitz**, wife of CSU Chancellor Barry Munitz and a well-known patron of the arts.

Continued on Page 7



Marilyn Johnson Appointed VP for Institutional Advancement

Cal State L.A. has a new Vice President for Institutional Advancement (VPIA), **Marilyn Johnson**, whose appointment was effective July 1. She replaced **Lee Case**, the Interim VPIA, and is responsible for the areas of University Development, Alumni Relations, and Public Affairs. Johnson comes to campus from CSU Long Beach where she was Associate Vice President for University Relations and Development as well as a part-time lecturer. Before that, she was Assistant Director, then Associate Director of Internal Operations at San Diego State University. She has been President and CEO of the Northern Colorado/Southern Wyoming Junior



Marilyn Johnson

Achievement Franchise, a business and education curriculum partnership that empowers youth—particularly at-risk youth—in business and

Continued on Page 6

Coming! The Annual Emeriti Fall Luncheon Meeting

Sept. 20, Noon, University Club

The annual **Emeriti Association Fall Luncheon Meeting** has been set for Tuesday, Sept. 20, at noon, in the newly redecorated University Club. Association members will gather for food, fellowship, and a chance to hear guest speaker **Dawn Marie Patterson**, Dean of Continuing Education and Associate Professor of Education (Division of Educational Foundations and Interdivisional Studies) who will speak about the future of Continuing Education at Cal State L.A. A social hour will begin at 11:30 a.m., and lunch will be served at noon. The cost is \$10.

A graduate of the State University of New York, College at Geneseo, where she earned a B.A. degree in Education and Library Science in 1962, Patterson holds an M.A. in Counseling Personnel Services from Michigan State University (1973), as well as a Ph.D. in Educational Administration, Adult and Continuing Education, awarded in 1977.

She came to Cal State L.A. in 1985 after serving as Assistant Dean in the College of Continuing Education at USC where her responsibilities included managing staff who were developing professional continuing

Continued on Page 5

OPENING WEEK EVENTS

FALL FACULTY MEETING

Sept. 19 9 a.m.
Luckman Fine Arts Complex

EMERITI LUNCHEON MEETING

Sept. 20 11:30 a.m.
R.S.V.P. by Sept. 16

MARGARET HARTMAN PROMOTED TO PROVOST

On Aug. 18, President **James M. Rosser** announced the appointment of **Margaret J. Hartman**, Associate Vice President for Academic Affairs—Faculty and Administration and Professor of Biology, as Provost and Vice President for Academic Affairs. Hartman had served as Interim Provost and Vice President for Academic Affairs since the retirement of Provost **Mary Elizabeth Shutler** in Jan. 1994.



Margaret Hartman

A native of Columbus, Ohio, she resides in Pasadena with her husband, **Robert G. Zahary**, Professor of Accounting and chair of the Department of Accounting. Hartman earned a bachelor's degree in Biological Sciences in 1966 at Cal Poly San Luis Obispo and M.A. (1968)

and Ph.D. (1970) degrees in Entomology at Oregon State University. She came to CSLA in 1970 as an assistant professor of zoology. In 1972, the Departments of Botany and Zoology were merged into the Department of Biology. (Still later—in the mid-1980s—Microbiology was added to what is now the Department of Biology and Microbiology.) Quickly rising through the ranks, she became an associate professor in 1974 and was promoted to full professor in 1980. By then she already had served three years as department chair, a position she held until Sept. 1981 when she was named Assistant Vice President for Academic Affairs. Her responsibilities as Assistant Vice President included faculty development, affirmative action, recruitment, retention, tenure, promotion, grievance and disciplinary action. In 1983, she assumed responsibility for implementing the new collective bargaining contract, which included separating the roles of the Academic Senate and the

Continued on Page 5

New Officers Elected at Annual Spring Meeting

Interim VP Lee Case Tells CSLA Fund-raising Plans

On Friday, May 13, the Emeriti Association held its **Annual Spring Luncheon** meeting on campus in the Oak Room. The event featured the election of officers for the 1994-95 academic year and a guest speaker—**Lee Case**, Interim Vice President for Institutional Advancement.

Vice President Case's topic was the realignment of the offices of Alumni Relations, University Development, and Public Affairs into the newly created Division of Institutional Advancement. Several factors led to the development of the new division: a new initiative approved by the CSU Board of Trustees, a new CSLA strategic plan, and a study of the CSU system by an external consulting firm that analyzed ways to respond to the impact of a critical reduction in state funds and new constraints on how the campus can spend its funds.

The CSU has a history of paying little heed to fund-raising and alumni, according to Case, who added that neither was envisioned as a top institutional priority by the system. The state's relative wealth of the 1970s, whose erosion began

with the passing of Proposition 13, allowed it to utilize its surpluses for years to support education and other public services.

When the crisis developed, the state, which was the largest—and only single—source of revenue to the General Fund budget, could no longer fulfill the role it had played for many years. And although the University of California had been involved in major fund-raising efforts for at least 25 years, the practice was virtually unknown in

the CSU. The problem was compounded by a lack of thorough, accurate records of CSU alumni on most campuses. Clearly changes were needed.

Cal State L.A.'s first major fund-raising effort was, of course, very successful: the Luckman Arts Complex will celebrate its gala grand opening Nov. 9. The University next utilized the services of a development consultant for assistance in preparing strategic plans for development, the

Continued on Page 3

The EMERITI ASSOCIATION

California State University, Los Angeles

ASSOCIATION OFFICERS, 1994-95

Kenneth Phillips

President

James Dunkelberg

Immediate Past President

Frieda Stahl

Vice President, President-Elect, and Academic Senate Representative

Mary Gormly

Vice President, Programs

Laird Allison

Treasurer and ERFA Representative

Marie-Antoninette Zrimc

Secretary

Winona Brooks

Corresponding Secretary

C. Lamar Mayer

Membership Secretary

Victor Payse

Data Base Coordinator

Warren E. Reeves

Fiscal Affairs Chair

Carol Smalenburg

Fellowship Fund Chair

Donald A. Moore

CSU Academic Senate Representative

John L. Houk

CSU-ERFA Representative

Jackie Lou Hoyt, Mildred G.

Massey, Leonard G. Mathy,

Leon Schartz

Members-at-Large

Address communications to:

California State University, Los Angeles

Emeriti Association, Administration 815

5151 State University Drive

Los Angeles, CA 90032-8500.

PRESIDENT'S MESSAGE

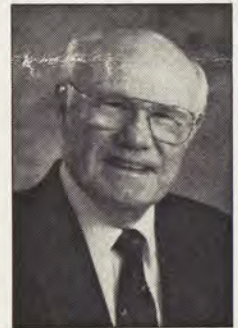
It is most appropriate, as we begin the 1994-95 academic year, to express our appreciation for the outstanding achievements of the Board and officers who served the Emeriti Association so effectively during the past year. The Emeriti Association of California State University, Los Angeles is now in its 16th year of activity. Because of its close liaison and cooperation with the California State University Emeriti and Retired Faculty Association (CSU-ERFA), California Faculty Association (CFA), and Cal State L.A. Chapter 76 of the Retired Employees Association (RPEA), it has been possible for our Emeriti Association to inform its members and keep them aware of problems that affect their retirement status. The objectives of the Emeriti Association include the phrase, "to provide for the general welfare of its members." It is quite evident that there is great value to all of us in joining the Emeriti Association to stay in contact with our colleagues and keep up-to-date on retirement issues.

Several events for the year are already scheduled. During the opening week of the fall quarter, we will hold an Emeriti Luncheon on Tuesday, Sept. 20, in the University Club. All emeriti are urged to attend the interesting program that is planned. You will have a chance to greet old friends and perhaps make some new ones. On Tuesday, Feb. 7, 1995, a luncheon will be held for all emeriti as part of the Emeriti Week observance. And the Emeriti Association Annual Spring Luncheon and business meeting is scheduled for Friday, May 12, 1995. The election of officers and new board members is part of the annual May luncheon activities. You should be there!

One of the major University events that will take place (on November 9) is the gala grand opening of the Harriet and Charles Luckman Arts Complex, located at the northwest corner of the campus. This beautiful and most impressive complex includes a 1,200-seat main theater and a 7,000 square foot art gallery. An architecturally distinctive, outdoor "Street of the Arts" links the facilities. A tour through the complex is very interesting and worth a trip to campus. (See the related story about the Luckman grand opening on the first page of *The Emeritimes*.)

One of the Association's ongoing activities is the awarding of fellowships to several worthy Cal State L.A. graduate students. The recipients have been outstanding and also very appreciative of the financial assistance they have received from the Association. The Emeriti Fellowship Fund principal has now reached almost \$32,000. This impressive total has been achieved because of the unselfish contributions made by emeriti faculty. Of course, we will continue to urge anyone who can to contribute to this worthy cause. The more we have in the Fellowship Fund, the more effectively we can help a greater number of graduate students achieve their goals. We invite everyone to support this effort and contribute whatever amount is feasible.

Finally, we urge you to join our Emeriti Association, participate in the activities, and contact any board member or officer if you have questions or concerns. It is critical that we be well-informed and well-organized, and that we have as many members as possible because, to meet the challenges of the current political climate, "to secure, enhance, and maintain the status, rights, and privileges of the Emeriti" is our goal. We urge all of you nonmembers to join now. We need your support!

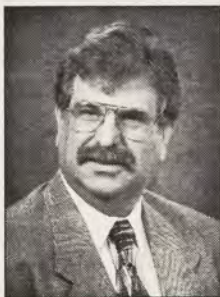


Kenneth Phillips

Kenneth Phillips
President, 1994-1995

Selkin Named Acting Dean of Arts and Letters

The appointment of **Carl Selkin** (Chair, Department of English) as Acting Dean of the School of Arts and Letters has been announced by **Margaret J. Hartman**, Provost and Vice President for Academic Affairs. The appointment runs from July 1, 1994, through June 30, 1995. Selkin replaces **Bobby R. Patton**, who left in June 1994 to become Vice President for Academic Affairs at Wichita State University in Kansas.



Carl Selkin

A faculty member since 1970, Selkin is a native of New York who earned a B.A. degree at Syracuse University, and M.A. and Ph.D. degrees (17th century British literature specialization) at the State University of New York at Binghamton. He has chaired his department since Fall 1991.

He is active in academic governance at all levels; his involvement includes service as an Academic Senator with two terms on the Executive Committee and a number of other committees. He is a member of Arts and Letters

Angels—School of Arts and Letters support group, Visual Arts Council—Department of Art support group, and the Harriet and Charles Luckman Fine Arts Complex Community Advisory Board.

His keen interest in Canada led to the development of the campus' Canadian Studies project in 1986 and continued activity in Canadian studies on both local and national levels since then. He founded the Jean Burden Poetry Series and established it as an endowed annual reading that has sponsored campus visits of notable poets such as Mark Strand, Lucille Clifton, and Howard Nemerov. In coordinating his department's Visiting Writers series, he is largely responsible for having lured numerous outstanding scholars to campus for readings, among them Carlos Fuentes, Yevgeny Yevtushenko, Octavio Paz and Michael Harper, a distinguished alumnus of Cal State L.A. Selkin also serves on the Southwest Chamber Music Society development board.

Selkin resides in Pasadena with his wife Carol (a Public Affairs Office employee) and two teenage sons, Peter and Eli.

A national search will be undertaken during the 1994–95 academic year to select a permanent replacement for Dean Patton.

Annual Spring Meeting (Continued from Page 2)

foundation, and alumni affairs. Next came the creation of the new vice presidency.

Now, along with sister CSU campuses, CSLA is committed to raising ten percent of its net General Fund budget from private sources over the coming years, in addition to funds already being raised for specific purposes. Policies for investment and distribution of Foundation funds have been developed, the Foundation by-laws have been rewritten, and a new organizational chart places new emphasis on development and public affairs. The Annual Fund campaign will be brought back "in-house" to improve its efficiency and reduce costs dramatically, and better coordination of fund-raising efforts among the six academic schools will be sought. A data base manager has been hired for the alumni/development areas. Extensive discussions with University Auxiliary Services, Inc. (UAS) are aimed at improving financial reports; streamlining of accounting services for support groups has begun.

Future efforts include clarifying the University's image in the Los Angeles community and sharpening the campus' profile. These efforts will entail an enhanced communications program, publishing of an annual Honor Roll to acknowledge donors, more attention to alumni, perhaps with more frequent publications, and enhancement of staff in Alumni Relations and Development (each of which will have an Associate Director to assist its Executive Director).

Greater assistance will be given support groups in the selection of board members, and



Emeriti Association Executive Board members at Spring luncheon meeting.

stronger efforts will be made to recruit alumni to play an active role in the University's affairs.

Case stated that the search for a permanent Vice President for Institutional Affairs was nearing a close; four well-qualified finalists would soon begin interviews. He closed by urging emeriti faculty to play a vital role in the strengthening of the University's advancement by offering their expertise to cultivate former students to once again become involved and, for those who are able, to make provision for the University in their wills. He offered the assistance of his division to all interested emeriti and answered several questions after concluding his remarks.

The Nominating Committee's slate of officers for the 1994–95 academic year was accepted as presented. The officers and Executive Board members for the 1994–95 year are listed on the page 2 of this publication.

Three Emeriti Fellowships to be Awarded at Luncheon

Three **Emeriti Fellowship Fund** recipients will receive awards of \$1,000 each at the Association's Annual Fall Luncheon Meeting on Sept. 20. Selected from a pool of 61 applicants, of whom 23 were scrutinized in the final screening, the winners have undergone intensive review by the Fellowship Awards Committee: **Laird Allison**, **David Bilovsky**, **Winona Brooks**, **John Houk**, and **Carol Smallenburg** (Chair).

All of the candidates are classified in a master's degree program, and the winners were selected largely on the basis of scholarship, professional promise, and community service. Three letters of recommendation were required of each applicant, including at least two from faculty members in their major department or division.

For the third straight year, the CSU has imposed fee hikes on all students, and the state's continuing economic woes make it increasingly difficult for many students to realize their educational goals.

Since the Emeriti Association fellowships were initiated three years ago, five outstanding graduate students have been assisted in their quest for higher education. (An article in the Spring 1994 issue of *The Emeritimes* contained information about their current activities.)

As always, greater funding is needed. All emeriti are urged to give whatever they can to this most worthy cause. Few CSLA scholarships are targeted for master's degree students, but the need for financial assistance among this population is great. All persons interested in contributing may forward donations to the Emeriti Endowment Fund in care of the CSLA's Office of Institutional Advancement, 5151 State University Drive, Los Angeles, CA 90032-8502.

Interested students submit their fellowship applications to the Scholarship Office, and the recipients are selected by the Emeriti Association's Fellowship Awards Committee.

Revised Emeritus Status Changes Approved by Senate

Proposed Changes Forwarded to President for Review

The Spring 1994 issue of *The Emeritimes* contained an article about the proposed changes in the **Emeritus Status** policy as currently stated in the *Faculty Handbook*.

The proposal that gained Academic Senate approval earlier this year was returned by President Rosser for revisions. After further consideration, the Academic Senate approved further changes on July 12, and the proposal was again forwarded to the President on July 25.

Any further action on the proposed changes will be reported in *The Emeritimes* as soon as information becomes available.

Campus Highlights

CSLA Students Honored at CSU Student Research Competition

Cal State L.A. students walked away with impressive honors at the **1994 CSU Student Research Competition** held at CSU Hayward May 6 and 7. The annual competition, now in its eighth year, is open to undergraduate and graduate students at all CSU campuses. Participants first compete at the campus level in ten different disciplinary areas, and campus winners in each category proceed to the systemwide competition. This year, the systemwide competition attracted 140 entries.

CSLA's showing—winning three first place and one second place awards—made **Costello Brown** (*Associate Dean of Graduate Studies and Professor of Chemistry*), as well as all of our competitors, very happy. First place winner in Behavioral and Social Sciences was **Mona Devich-Navarro**, a senior psychology major, whose presentation was titled, "Mexican-American Adolescents: Integration of Two Worlds." Second place in the same category went to **Armando X. Estrada**, a graduate psychology major, for his entry, "Re-Examining What It Means to be Bicultural." Both were coached by faculty adviser **Jean Phinney**.

In the Energy category, **Ed Urgiles**, a senior with a double major in Electrical Engineering and Physics, captured first place for "Vapor Chemical Reaction Growth of Germanium Iodide." His faculty adviser is **Charles Coleman**. Finally, **Rhonda K. Larson**, a graduate student studying organic

chemistry with faculty adviser **Donald Paulson**, was awarded first place honors in the Physical and Mathematical Sciences category, for "Ligand Exchange Kinetics of RuOEP (L_2)."

All participants receive certificates, and the first place winners receive a cash prize of \$400 each. Other CSLA competition winners who participated in the systemwide competition were **Julio Enrique Castro**, **Julie Kim**, **Mary Ann Laun**, **Mukosolu N. Onwughalu**, **Jorge Rodriguez**, and **Michael N. Yagi**.

Remodeled University Club Opens

Since University Auxiliary Services, Inc. (UAS) assumed the functions formerly performed by ARA Food Services last summer (1993), several changes in food service on campus have occurred. Most of these changes were reported in the Fall 1993 issues of *The Emeritimes*, but additional progress has been made. Choices restaurant in the University Club was closed and the Club has been extensively remodeled. It is expected to be open for the beginning of the fall quarter on a membership basis only (as it was originally operated).

In addition to the catering truck outside the north entrance to Simpson Tower, there is a King Taco catering truck outside the northwest entrance to King Hall. On Sept. 22, King Taco will open in the Salazar Hall facility formerly known as Los Arcos, marking the return of a full service dining facility at the south end of campus for the first time since the area was closed because of

damage caused by the October 1987 Whittier Narrows earthquake.

Faculty Colloquia Offer Intriguing Speakers

On selected Tuesday afternoons during the fall, winter, and spring quarters, faculty colloquia, selected by the Faculty Colloquium Advisory Board from written faculty proposals, are presented from 3 until 5 p.m. Most are held in the University Club; however, special circumstances surrounding the subject matter or presentation sometimes dictate use of another, more appropriate facility. Refreshments are served, and each presentation includes a time for questions and answers. A list of the next few colloquia is included in the *Calendar of Events*.

New Park Honors Memory of Juanita and Robert Mantovani

A new park in Torrance, CA, has been dedicated to the memory of the late Drs. **Juanita Marie** and **Robert Mantovani**, who resided nearby. Juanita Mantovani was Cal State L.A.'s Dean of Undergraduate Studies from Sept. 1992 until the couple was killed by a mudslide in August 1988, while returning from their vacation home in Lake Crowley, CA.

At the recent dedication, held June 7, and attended by residents of the Hollywood Riviera area of Torrance, city officials, and friends and members of the two families, the couple was praised for being dedicated to sparing the area from high rise development, promoting the closeness of the neighborhood, and preserving the quality of the area. The park, at 220 Via Riviera, skirts the north edge of a small new development of luxury homes recently completed on the site of a former elementary school adjacent to the Mantovanis' residence. **Pamela Maran**, sister of Juanita Mantovani, and a gifted soprano, sang the national anthem and another solo, and several residents spoke in remembrance of the popular couple. **Marie Watson**, Juanita's 81-year-old mother, was among the family members who attended the brief ceremony. A commemorative plaque was unveiled, and light refreshments were served.

Among Juanita Mantovani's responsibilities at Cal State L.A. were the GE Honors Program, the Academic Advisement and Information Cen-



Juanita Mantovani

Grand Opening Set for CSLA Metrolink Station

On the morning of **Wed., Oct. 26**, in conjunction with Metrolink's second anniversary, Cal State



METROLINK

L.A. will dedicate its Metrolink station—the first of its kind on a college campus. Like the gala March 30 groundbreaking ceremony, the event will take place at the MTA turnaround at the south end of campus and at the new Metrolink station below it. And for many commuters in the Cal State L.A. family, traveling to and from campus will undoubtedly become a more tolerable—perhaps even pleasurable—experience.

The new train station, which is located below the main level of the campus, will include an elevator, benches covered with canopies, and artwork in the form of a mural (a feature of all Metrolink stations). The area will be landscaped and well lit and will have

a security system to ensure the safety of commuters.

Subsidies are provided for both students and employees, partly by MTA and partly by CSLA's Office of Commuter Services.

The station will serve not only Cal State L.A., but surrounding communities which will be accessible by shuttle service from the station.

Ridership on the already-popular San Bernardino Metrolink line is expected to increase considerably as the result of the new station, particularly for riders from the San Bernardino-Riverside-Redlands area, for whom commuting by bus is time-consuming and complicated.

(For complete information about Cal State L.A.'s Metrolink involvement, please refer to the Spring 1994 issue of *The Emeritimes*.)

ter, and the Cooperative Education program. She is remembered for her role in developing a joint curriculum involving Cal State L.A. and the Los Angeles County High School for the Arts, the founding of the campus' chapter of Golden Key national honor society, and, above all, her tremendous dedication to students. She was an active supporter of the arts and performed several times in the biennial Faculty-Staff Vocal Extravaganza. A gifted keyboard artist, she served as organist at several churches.

Robert Mantovani chaired the Career Counseling Center at Long Beach City College and taught psychology, also. He was extremely active with Alpha Gamma Sigma, the national honor society for community college students. The two also were very active in community and civic affairs.

Rosemarie Marshall Elected to National AAUP Office

Rosemarie Marshall (*Biology and Microbiology*), 1992-93 CSU Outstanding Professor and a long active in faculty affairs, has been elected First Vice President of the American Association of University Professors (AAUP) for a two-year term that commenced in June 1994. Officers serve also on the AAUP National Council—the association's legislative body. A CSLA faculty member since 1978, she received the



Rosemarie Marshall

campus' OPA for 1983-84, the California Faculty Association (CFA) WHO Award for Distinguished Service in Higher Education in 1986, and was president of CSLA's CFA chapter in 1983-85 and 1991-93. She has been active with AAUP at local, state, and national levels and has served as president of CSLA's AAUP chapter and on the AAUP National Council (1989-1992) and Executive Committee (1990-91). She was president of the AAUP California Conference from 1991 until 1993 and currently is a member of an AAUP Committee on College and University Teaching, Research, and Publication.

Founded in 1915, the AAUP is the only national organization that represents college and university faculty members exclusively. Serving all higher education faculty members at campuses through the U.S., the AAUP is dedicated to defending the principles of academic freedom and tenure and establishing academic personnel standards that ensure due process.

Margaret Hartman (Continued from Page 1)

union, and served on the CSU collective bargaining team.

She was awarded an internship at the National Institutes of Health in 1983 and spent six months in Washington, D.C. in the NIH program which was designed to help administrators learn how to obtain grants for their campuses.

In addition to her duties as Assistant Vice President, upon the departure of **Bob H. Suzuki** for the academic vice presidency at CSU Northridge, she also served as Acting Dean of Graduate Studies and Research in 1985-86.

In Sept. 1986, she became Associate Vice President for Academic Affairs, and with the new job came more areas for which she had primary responsibility, including accreditation, faculty affairs, faculty contract administration, program review, student outcomes assessment, and faculty development. As chief academic officer for faculty affairs, she has maintained a close working relationship with the Senate and served as Executive Secretary of its Faculty Policy Committee. She developed the very successful Center for Effective Teaching and new faculty orientation and mentoring programs, served on the Task Force on Reengineering the Work Force and the Academic Tactical Planning Committee and Enrollment Management Task Force.

As Accreditation Liaison Officer, she was responsible for the ten-year self-study and reaccreditation visit completed in 1990 and coordinated all discipline-specific accreditations (e.g., AACSB, ABET, NASM, NCATE).

Other responsibilities included overall responsibility of the Edmund G. "Pat" Brown Institute of Public Affairs which involves working extensively with community groups and public officials. Coordination of the program review process includes oversight of all degree programs, Continuing Education, the Library and Learning Resource Center, the Advisement Information Center, and 25 special centers, bureaus, and institutes.

Somehow, she still managed to find time to serve as Interim University Librarian for the 1989-90 academic year while a search for a successor to **Morris Polan** was underway.

She has written extensively: 16 articles in refereed scientific journals and 19 papers presented at professional meetings. In addition to committees listed above, she has served on school retention/tenure/promotion committees, the Educational Policy and Resources Committee (EPRC) and its Graduate Studies and Undergraduate Studies subcommittees, the Academic Resources Committee, and the General Education Review Committee.

She is listed in *Who's Who in America*, *Who's Who of American Women*, and *World's Who's Who of Women in Education*; was elected to membership in Sigma Xi, Phi Kappa Phi, Golden Key national honor societies, Beta Beta Beta (national biology honor society), and Cardinal Key (national women's honorary service society); is a member of the Board of Directors of the Southern California Academic of Sciences; and is an AASCU fellow (1992-1994).

Fall Luncheon Meeting (Continued from Page 1)

education programs as well as serving as the academic liaison for U.S. Army, Air Force, and Naval ROTC programs. She also was Executive Director of Defense, Aerospace, and Multinational Corporate programs.

Very active professionally, Patterson has been president of the Pasadena Branch of the American Association of University Women (AAUW), California Colleges and Military Educators Association, and the Los Angeles Airport Area Industry Association. She has been active in the Navy League and the Air Force Association and is the recipient of the Califor-

nia Air Force Association's "Distinguished Achievement in Aerospace Education" award.

She participates regularly in workshops, conferences, and institutes that cover such topics as leadership strategies, management methods, proposal development, project management, and fund-raising.

For luncheon reservations, forward a check for \$10, made payable to *Emeriti Association*, to: **Laird Allison**, Treasurer, 2176 Bellbrook St., Covina, CA 91724. Reservations must be received by Sept. 16. For further information, contact Laird Allison at (818) 915-8508.



Dawn Marie Patterson

Your Dues are Due

The Emeriti Association's new year began last July 1. Your 1994-95 dues are past due if you pay on an annual basis. Please remit.

Professional and Personal

Saralyn Daly (*English, 1961–1988*) has written a new book, *Katherine Mansfield*, which was published by Twayne-Macmillan, New York, in 1994. Her research involved manuscripts in the British Library in London, the Newberry Library in Chicago, the Harry Ransome Research Center in Austin, TX, the Huntington Library in Pasadena, and several university libraries. It was partially funded by the Newberry Library and the National Endowment for the Humanities.

Kudos to **Mary Gormly** (*Library, 1962–1983*) who attended the Navy League of the U.S. national convention in San Diego, Aug. 3–7, and the California Air Force Association (CAFA) conference at Vandenburg AFB, CA, Aug. 12–14, where she received the CAFA “Meritorious Service” award.

Donald E. Hudson (*Physics and Astronomy, 1964–1983*) has long had ties to the state of New Mexico. His degree in physics and World War II resulted in two years of secret war work at Los Alamos where the atomic bomb was developed. And his personal involvement with the Martinez family of the San Ildefonso pueblo aroused his interest in Native American pottery as an art form. After World War II, he was a physics student and teacher/researcher at Cornell, Princeton, and Iowa State, and then, of course, he spent nearly 20 years at Cal State L.A. All this time, he maintained an intense interest in both American Indian and Oriental art.

After retiring, he became inspired to create sculpture as well as admire the work of others. During a lifetime of craftsmanship with wood and metal, he had developed extensive mechanical skills. So it was not surprising that, in 1986, he enrolled at Glendale Community College as an art student. The art faculty there encouraged this “overage undergraduate” (those are *his* words, not the editor’s!), and his pieces consistently won awards in the student art shows. Thus encouraged, he abandoned retirement in favor of sculpture.

Don has a special motivation to create abstract, highly conceptual sculptures that feature expressive and flowing geometric curves. He has worked in soapstone, ceramics, steel, hydrocal, jesmonite, fiberglass, and bronze. He looks forward to other classic and modern media.

Since 1989, Don has exhibited at Golden State Sculpture Association shows. In June 1991, he received an Honorable Mention for the soapstone “Yin and Yang.” In November 1993, his bronze, “Koru,” won one of three special first place awards.

David Laird (*English, 1958–1990*) read a paper, “Cultural Politics and Shakespeare’s *Troilus and Cressida*,” at the Shakespeare As-

sociation of America’s annual meeting, Albuquerque, NM, Apr. 14–16.

Morton Renshaw (*Dean of Students/Education, 1950–1973*) and his wife Mary Alice, keep busy with their two daughters and four grandchildren. Daughter Susie teaches special education and has two daughters in college—one a sophomore prelaw major at USC, the other a freshman at UC Davis who hopes to study veterinary medicine. Their other daughter, Gaynor, teaches fourth grade and has two sons: the 15-year-old is a high school freshman who is fascinated by computers, and the 13-year old is active playing basketball and as a saxophonist in his junior high school band. In 1993, the Renshaws traveled to Lake Havasu City (to see the London Bridge), Las Vegas, NV, and Raton and Albuquerque, NM. They recalled having last seen the London Bridge spanning the Thames River in London in 1970, shortly before it was dismantled and shipped to its new home in “the colonies.” They report that “you see a bit of the bridge, but ‘developers’ do strange things.” While at home, Morton and Mary Alice are active with Eastern Star, which last year awarded Morton the Rob Morris award for his support and interest. They also play bridge and attend meetings of Silver Triangle, an organization for seniors.

Ake Sandler (*Political Science, 1949–1980*) reports that **Tully E. Warren**, who retired as an associate professor of political science in 1981 after teaching since 1950, died in Dec. 1993.

Marilyn Johnson (Continued from Page 1)

economic understanding and success in the competitive global market. The franchise is the third largest nonprofit organization in the U.S.

Her multifaceted background includes more than 20 years of administrative experience with an emphasis on multicultural awareness programs and projects, specializing in organization development, management, and administrative operations. She has been a minority business owner approximately 20 years, she was also a consultant on American Indian education, property and investment management, volunteer management, and the establishment of free clinics.

Johnson’s higher education is solidly grounded in the CSU. She holds a bachelor’s degree from Cal Poly Pomona and an Master’s from San Diego State. Currently, she is in the final stages of a Ph.D. program in Higher Education Administration at USC. She also has taught at San Diego State, Colorado State, and Grossmont Community College.

Her experience in institutional advancement is extensive and covers the areas of systems creation and operation and management, capital campaigns, major gifts, ongoing involve-

ment with regional and national foundations, board development, annual giving, planned giving, event planning and management, alumni relations, corporate and foundation affairs in higher education institutions, and more.

Warren taught courses in politics and was a frequent speaker at service organizations such as Rotary and Kiwanis. His wife, Marjory, of Montecito, CA, daughters Marion Bottemly and Hildreth Warren, and sister Carol Pollock survive him.

Carleton B. Shay (*Education–Educational Foundations and Interdivisional Studies, 1962–1989*) has been elected to a second three-year term (1994–1997) on the Board of Directors of the International Council of Psychologists (ICP). He previously served on the board from 1984 until 1987 and also has edited the ICP’s newsletter, *The International Psychologist*, since 1980.

Paul M. Zall (*English, 1957–1986*) conducted an exclusive private viewing of the Lincoln Exhibit at the Huntington Library in San Marino last May. The event was presented for members of Phi Alpha Theta, Cal State L.A.’s honor society in history, and their guests. Included in the exhibit was one of five handwritten drafts of the Gettysburg Address. Other items—most dating from the 1860s— included handwritten excerpts of Lincoln’s diary and one of his trademark stove pipe hats.

A renowned scholar of both Lincoln and Benjamin Franklin, Zall is the author of *Lincoln Laughing*, a scholar of both American literature and history, and a Research Fellow at the Huntington.

The Lincoln Exhibit ran through August.

In addition to holding a lifetime Community College teaching certificate, she is a Certified Instructor of the Aged (USC) and holds a Registered Administrator certificate, a President’s Executive Training (PEX–International) certificate, and is a Leadership Assessor for the U.S. military. Her many honors and awards include Honorary Alumni Scholar (CSU Long Beach), an Associated Students Recognition Award for outstanding leadership and service, a “Most Outstanding Student”—Danforth Citizenship and Scholarship award, a Citation award—C.P.R.S. Dist. XII “Outstanding Professional,” and was one of 20 women administrators selected from a pool of 200 to attend leadership and management seminars for women in higher education. She is listed in *Who’s Who in the World of Women*; *Who’s Who in the West*; and *Who’s Who in Universities and Colleges in the U.S.*

Continued on Page 8

Emeriti Keep on Moving

Since the 1994 Emeriti Roster was mailed, several emeriti faculty have had address or phone number changes. The new information is provided below for the convenience of those who may wish to contact them.

Philip Bergfield
602 Leatherwood Dr.
Mountain Home, AZ 72653-3782

George Burstein
16363 Sierra Ridge Way
Hacienda Heights, CA 91745

Brian Capon
P. O. Box 2190
Del Mar, CA 92014

Peter-Marc Damien
4076 17th St., #506
San Francisco, CA 94114

Mary Gormly
1024 Royal Oaks Dr., #820
Monrovia, CA 91016
(213) 358-7325

Thomas M. Graham
P. O. Box 49488
Colorado Springs, CO 80949-9488
(719) 590-8808

Lyle Hanna
HC 30 Box 1103
Prescott, AZ 86301

Lois V. Johnson
4343 Center St. NE, #42
Salem, OR 97301

Jasper (Jack) Little
3040 E. Charleston Blvd.
Las Vegas, NV 89104

Frederic Mints
19191 Harvard Av., #45B
Irvine, CA 92715

Patricia Richard-Amato
9333 Lincoln Blvd, #1218
Los Angeles, CA 90045

Gordon B. Severance
(713) 251-0374

Mildred O. Simpson
151 Warbass Way, F312
Friday Harbor, WA 98250

H. Jean Waldrop
(805) 383-6905

We Need Your Help

You may have noticed the frequent long delays in reporting deaths of emeriti faculty. This information is valuable to both the Emeriti Association and the University as a whole. Please report any emeriti faculty deaths promptly to the Editor—**Linda Trevillian**—either in writing or by phone.

In Memoriam

EMERITI FACULTY

Celeste Griffith (*Music, 1954–1978*) died May 28, 1994, in Overland, KS. She had come to Cal State L.A. after teaching music in public schools for many years in Hammond, IN, Spokane, WA, and Santa Paula, CA. Educated primarily in the midwest, she earned a B.S. degree at Kansas State Teachers College in 1943 and a M.Mus. at Northwestern University in 1950.

She was active in music education circles in Southern California. Her teaching area of specialization was music for children.

L.D. Myers (*Marketing, 1970–1986*), age 79, passed away Aug. 7 in San Clemente after a long illness. A doctoral graduate of Claremont Graduate School, he chaired his department and was principal undergraduate adviser for many years. He also was active in academic governance and served on several department, school, and University level committees. He is remembered for a comprehensive knowledge of his field and for the personal interest he took in students' studies and future careers.

Myers is survived by his wife, Ruth; son, John, of Simi Valley; daughter, Linda Jones, of Occidental; sister, Nell Wellbourne, of San Clemente; grandson, Jeff; and several nieces and nephews.

Marion J. ("Pete") Olsen (*Recreation, 1958–1975*) died July 8 in Provo, UT, where he was born in 1910, attended high school, and graduated from Brigham Young University with a B.S. degree in 1936 and an M.S. in 1941.

A distinguished secondary educator, he was a high school principal for 21 years and was selected as Utah's *Educator of the Year* in 1957. When he arrived at CSLA in 1958, the Recreation Education program was just a few years old, the master's degree had barely been initiated, and the department, headed by founding faculty member George Willott, was housed in the Division of Health and Safety, Physical Education, Recreation, and Athletics. His teaching area was recreation administration, and his professional interests were sports and the organization of sports. An avid golfer and bowler, as well as an enthusiastic sports fan, he also was known around campus as the "poet laureate"—presumably because, whenever the need arose (retirements, farewell parties, etc.), he had a poem ready to recite! Active professionally, he was involved in the California Parks and Recreation Society.

After retiring, he traveled extensively in the U.S., Mexico, and Europe and was president of both the Retired Teachers Association and the Old Time Athletics Association. Survivors include Leona—his wife of more than 55 years; son, Philip Marion Olsen; daughter, Connie Russell, and her husband Gary; a brother; four sisters; and four grandchildren.

Genevieve Allsion, wife of Laird Allison, Emeriti Association Treasurer, died suddenly this summer. The Association extends its heartfelt sympathy to Laird.

Luckman Opening (Continued from Page 1)

An Opening Night Gala Organizing Committee has been established that includes representatives of various segments of the CSLA community and is chaired by **Don Rhodes**, Alumni Board of Directors member and part-time instructor in the Department of Health and Nutritional Sciences. Tickets are priced from \$100 to \$2,500 with concomitant incremental privileges included. Valet parking will be provided for all guests, and festive decorations and student entertainment in the Street of the Arts will add to the excitement. A postconcert reception will conclude the evening's activities.

An appeal is being made to faculty and emeriti, staff, students, alumni, CSLA support groups, and all interested arts enthusiasts to share in the momentous occasion. For ticket information, call the aLuckman Fine Arts Complex, (213) 343-5121.

The Luckman inaugural season includes many exciting performances, and ticket prices for most events range between \$18 and \$28. Several subscription series are available at considerable savings, and discounts are offered to

students with valid ID, seniors (over 65), faculty and staff, alumni, and groups.

The Luckman 1994-95 season is listed in the *Calendar of Events*.

NEW EMERITI

The following recently retired faculty members have been granted emeritus status. They are listed alphabetically with department or division and years of service included. We welcome them as fellow emeriti faculty and encourage them to play an active role in the Emeriti Association.

GEORGE B. BOUSE
(*Electrical and Computer
Engineering, 1959–1994*)

MARJORIE ELAINE O'LEARY
(*Nursing, 1980–1993*)

MARY ELIZABETH SHUTLER
(*Provost and Vice President for Academic
Affairs/Anthropology, 1988–1994*)

Calendar of Events

NOTE: Unless otherwise noted, all events are held on campus. Some have an admission charge. *Dates, times, and locations of all events are subject to change.*

OPENING WEEK EVENTS

Sept 19, Mon, Fall Faculty Day

All-Faculty Meeting (includes announcement of Outstanding Professor Award recipients), 9–10 a.m., Luckman Theatre
President's Brunch, 10 a.m., Eagles' Landing

School/Dep't/Division Meetings—scheduled at various times during the day.
Sept 20, Tue, **Emeriti Association Annual Fall Luncheon**, noon, Univ. Club.
Info: Laird Allison, (818) 915-8508.

■ ART [Info: (213) 343-4010]

CSLA Gallery and COMA Gallery: Fine Arts Bldg. Hours: M–F, 12–5 p.m.

Oct dates TBA, **CSLA Faculty Show**, Fine Arts Gallery.

Opening TBA–Nov 18, **LAX (The Los Angeles Exhibition): Multimedia Works of Harry Gamboa**, Fine Arts Gallery.

Jan 3–14, **CSLA Graduate Student Show**, Fine Arts Gallery.

■ DANCE [Info: (213) 343-4110]

Oct 21–23, 28–30, **L. A. Dance Series**, State Playhouse
Fri, Sat, 8 p.m., Sun, 2:30 p.m.

Nov 18–20, **Student Dance Concert**, King Hall Dance Studio #1

Fri, Sat, 8 p.m., Sun, 2:30 p.m.

■ MUSIC [Info: (213) 343-4060]

Oct 15, 16, Sat, Sun, **Pacific Contemporary Music Center (PCMC) Festival Concert**, State Playhouse, 4 p.m.,

Oct 21, Fri, **Faculty Artist Recital: Orion Saxophone Quartet**, Music Hall, 8 p.m.

Oct 28–30, Fri–Sun, **Godspell (Concert Choir)**, Music Hall, 4 p.m.

Nov 9, Wed, **Luckman Gala Grand Opening Concert** (see *Events listing*)

Nov 11, Fri, **Faculty Artist Recital: Paul Van Ness, Piano**, Music Hall, 8 p.m.

Nov 18, Fri, **Symphony Orchestra**, State Playhouse, 8 p.m.

Nov 19, Sat, **Concert Choir**, State Playhouse, 8 p.m.

Nov 20, Sun, **Golden Eagle Singers**, Music Hall, 4 p.m.

Nov 29, Tue, **Jazz Ensemble**, State Playhouse, 8 p.m.

Nov 30, Wed, **Symphonic Winds**, State Playhouse, 8 p.m.

Dec 1, Thu, **Small Jazz Ensembles**, State Playhouse, 8 p.m.

Dec 2, Fri, **University Chorus**, State Playhouse, 8 p.m.

■ POETRY [Info: (213) 343-4140]

Nov 15, Tue, **Karen Swensen Poetry Reading**, Music 149, 4 p.m.

■ THEATRE [Info: (213) 343-4110]

Oct 14–Nov 23, **Calabasas Street**, Arena Theatre

Fri, Sat, 8 p.m., Sun, 2:30 p.m.

Oct 28–Nov 27, **East L.A. Classic Theatre: Miss Julie**, Arena Theatre

By August Strindberg; Fri, Sat, 8 p.m., Sun, 2:30 p.m.

■ AT THE LUCKMAN

[Info: (213) 343-5121; tickets: (213) 466-1767]

Sept 1–Dec 31, **Japanese Prints**, JFK Library Bridge

Sept 12–Oct 14, **The African Legacy in Central America: Photography by Tony Gleaton**, Luckman Art Gallery

Oct 1, 2, **Phoenix Dance Company**

Internationally known dance company from England; part of citywide UK/LA festival. Sat, 8 p.m., Sun, 7 p.m.

Oct 22, Sat, **Theatre of Yugen: Sarome Kyu-Kyu No Dan (The Climax of Salome)**, 8 p.m.

Nov 1–Dec. 16, **Fischinger: A Retrospective of Paintings and Films**, Luckman Art Gallery
Highlights of the work of Oskar Fischinger, 1900–1967, a pioneer modern artist who worked with both abstract film and non-objective easel painting.

Nov 9, Wed, **Luckman Gala Grand Opening** (see *Events listing*)

Nov 10–13, **Black Choreographers Moving Toward the 21st Century**

Thu–Sat, 8 p.m., Sun, 2 p.m.

Dec. 1–4, **Los Angeles Chamber Ballet: The Nutcracker**

Thu–Sat, 8 p.m., Sat, Sun, 2 p.m.

Jan 14, Sat, **Gerald Wilson and Ernie Andrews**, 8 p.m.

Jan 20, 21, Fri, Sat, **Jazz Tap Ensemble**, 8 p.m.

Jan 28, Sat, **Corky Siegel's Chamber Blues**, 8 p.m.

Feb 3, 4, Fri, Sat, **Identities: An Evening of Solo Performances**, 8 p.m.

Features four of America's preeminent performing artists: David Cale, Blondell Cummings, Jude Narita, Ruben Sierra

Feb 11, Sat, **Journey to Cordoba (Los Angeles Music Center Opera)**

Feb 18, Sat, **The Anderson Quartet**, 8 p.m.

Winners of the Eastman School of Music International Cleveland Quartet Competition, members of this chamber ensemble are Visiting Artists at CSLA.

Feb 24, 25, **The Indomitable Spirit of Woman (Los Angeles Dance Theatre)**, 8 p.m.

■ FACULTY COLLOQUIA

[Info: (213) 343-3800]

Oct 11, Tue, **Donald O. Dewey (History)**, "An Environmental History of the California State University," 3–5 p.m., Univ. Club.

Nov. 1, Tue, **Narendra Taly (Civil Engineering)**, "The January 17, 1994, 6.7M Northridge Earthquake—An Engineering Perspective," 3–5 p.m., Univ. Club.

Nov 22, Tue, **Timothy Diamond (Sociology)**, "Where Can I Get a Little Rest Around Here? A Comparison of U.S. and Canadian Nursing Homes," 3–5 p.m., Univ. Club.

■ EVENTS

Oct 1, Sat, **Annual Andy Krinock/Friends of Education Celebrity Tennis Tournament**, Campus Tennis Courts, all day (includes dinner and raffle). Info: (213) 343-4300.

Oct 3–31, **AIDS Awareness Display**, Library Bridge
Oct 4, Tue, **Reception for 1993–94 Outstanding Professor Award (OPA) Recipients**, 3–5 p.m., Oak Room. Info: (213) 343-3750.

Oct 12, Wed, **AIDS Awareness Fair**, Univ.-Student Union Walkway

Oct 26, Wed, 10 am, **Metrolink Station Grand Opening** (see *related story*)

Nov 9, Wed, **Luckman Gala Grand Opening: L. A. Philharmonic**, 8 p.m.

Inaugural events, 6:00–9:30 p.m. Info: (213) 343-5121.
Concert: Selections from the L. A. Philharmonic's European tour: Liszt, *Les Preludes*, Sibelius, *Symphony No. 5*.

Nov 18, Fri, Fifth Annual **Friends of Education Distinguished Educator Award Dinner**, Info: (213) 343-4300.

The Emeritimes EDITORIAL STAFF

Editor-in-chief:
LINDA TREVILLIAN

Layout and design:
DENNIS KIMURA

Printing:
REPROGRAPHICS

Editorial Board:
CAROL SMALLENBURG (CHAIR)
MARY GORMLY
WILLIAM E. LLOYD
MILDRED MASSEY

Address all mail for *The Emeritimes* to:
Linda Trevillian, Editor, *The Emeritimes*
California State University, Los Angeles
School of Business and Economics
Publications Office
5151 State University Drive
Los Angeles, CA 90032-8130
Phone: (213) 343-5262
Fax: (213) 343-2813

Deadline for submission of information
for Winter 1995 issue: **Dec. 5, 1994.**

Marilyn Johnson Appointed VP (Continued from Page 6)

At Cal State L.A., one of her first priorities will be to create the infrastructure necessary to bring in outside funding quickly. Already she has hired a new Executive Director of University Development, **Clare Faulkner**, who arrived on campus August 22. To assist **Mary Kacmarcik-Baker**, Director of Alumni Relations, an associate director position has been approved and is expected to be filled soon. A data systems coordinator has been hired to manage the myriad systems utilized by the vari-

ous offices under Vice President Johnson's control. To strengthen the campus' image and enhance public relations efforts, she has named **David McNutt**, formerly Director of Creative Media Services under **Desdemona Cardoza**, Vice President for Information Resources Management, as Executive Director of Publications and Public Affairs. Other changes may be expected as the interrelationships of the three areas in institutional advancement become more firmly established.