

**Adobe Dreamweaver 8**  
**Part 5: CSS Styles**  
INFORMATION TECHNOLOGY SERVICES  
California State University, Los Angeles

Version 1.2

Spring 2009

## Contents

<b>Introduction.....</b>	<b>2</b>
<b>CSS Styles Panel.....</b>	<b>2</b>
<b>Creating and Applying CSS Styles Rules .....</b>	<b>3</b>
<b>Creating Other Types of CSS Style Rules .....</b>	<b>5</b>
<b>Editing CSS Styles.....</b>	<b>8</b>
<b>Attaching Existing Style Sheets to Other Files.....</b>	<b>9</b>

---

## Introduction

Adobe Dreamweaver® is the widely used industry standard program for Web site creation. Using a design view to create the layout, code views to create scripting and backend, or split screen view to work on both simultaneously, users can easily create the page they desire. The added ability to integrate other Adobe Creative Suite software such as Photoshop, Illustrator, Fireworks, and Flash into the final page design is another benefit of the program.

Cascading Style Sheets (CSS) are a collection of formatting rules that control the appearance of content on a Web page. Users can use this advanced function to set some default values to the format, and use the particular format to customize the content. CSS styles also provide great flexibility for various effects.

---

## CSS Styles Panel

CSS Styles Panel is the major panel for using CSS styles. If the CSS style panel does not show up after launching the program, follow the instruction below to open the CSS styles panel.

To open the CSS styles panel:

Go to the **Window** menu ► **CSS Styles**. The **CSS Styles** panel will appear on top right corner of the screen (see Figure 1). Table 1 below has the descriptions of every button.

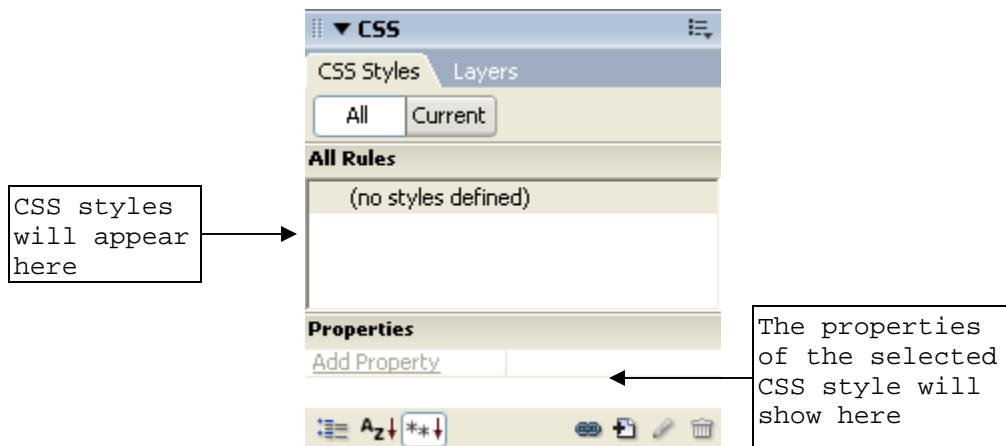
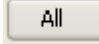


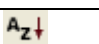







Figure 1 - CSS Styles Panel


**Table 1 - Buttons on CSS Styles Panel**

	All (document) mode	Shows all the CSS inside the document
	Current selection mode	Depending on where the cursor is, it displays the CSS of a particular selection.
	Category view	Displays eight categories: font, background, block, border, box, list, positioning, and extensions in properties.
	List view	Displays all CSS in alphabetical order in properties.
	Set Properties View	This is the default. It displays only those properties that have been set.
	Attach Style Sheet	Used to import an existed CSS Style Sheet into current document
	New CSS style	To add/create a new CSS
	Edit style	To edit/modify an existed CSS style
	Delete CSS style	To delete an existed CSS style

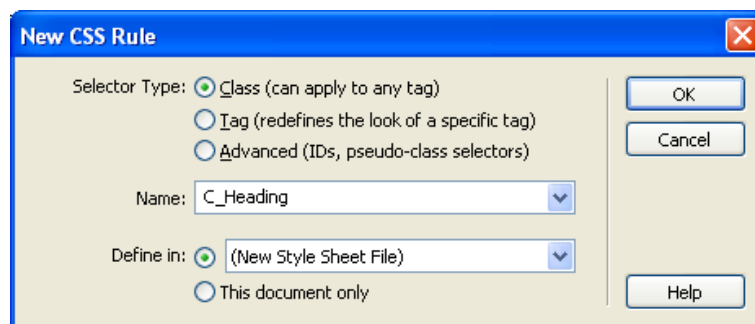
## Creating and Applying CSS Styles Rules

Open the “*create\_CSS.html*” file to practice.

To create a CSS styles rule:

1. Open the “*Create\_CSS.html*” file.
2. Go to the **CSS Styles** panel ► click **New CSS Rule** button .
3. The *New CSS Rule* dialog box will show up (see Figure 2).
4. Select **Class for Selector Type**, New Style Sheet File for *Define in*, if necessary.
5. Type the name “C\_Heading” inside the *Name*: section to give the style rule a name. Click **OK** (see Figure 2).

**NOTE:** There are two different options of *Define in*: and both have different meanings. *Define in New Style Sheet File* enables users to attach the style sheet in other documents. *This document only* means that the CSS style will be only applicable in this current document.



**Figure 2 - New CSS Rule Window**

6. The *Save Style Sheet File As* dialog box appears (see Figure 3).
7. Select desired location in *Save in* text box and type the file name “CSS”. Click **Save** (see Figure 3).
8. The CSS Rule Definition for .C\_Heading in CSS.css window shows (see Figure 4).
9. Select Type category. Using the down-point arrow to change the defaults as follows:  
**Font = Courier New, Size = 36 pixels, Weight = bolder, Case = uppercase,  
Decoration = underline, and Color = red.**
10. Click **OK**.
11. The CSS style rule will show inside the CSS Styles panel.

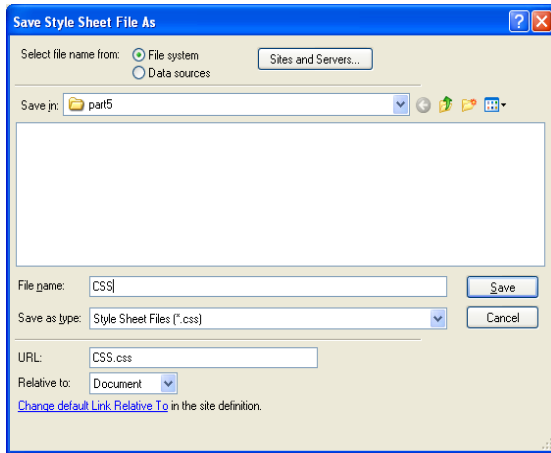


Figure 3 - Save Style Sheet File As Window

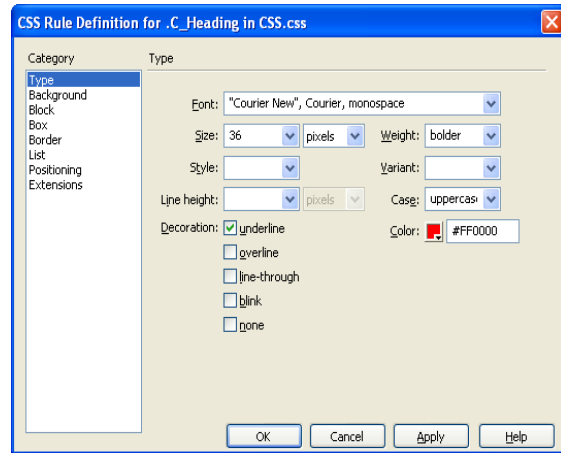


Figure 4 - CSS Rule Definition Window

To apply a CSS Style:

1. Highlight the desired text. Go to the **Properties** panel.
2. Use the down-point arrow of style to select *C\_Heading style* (see Figure 5).
3. The selected text will automatically apply the style.

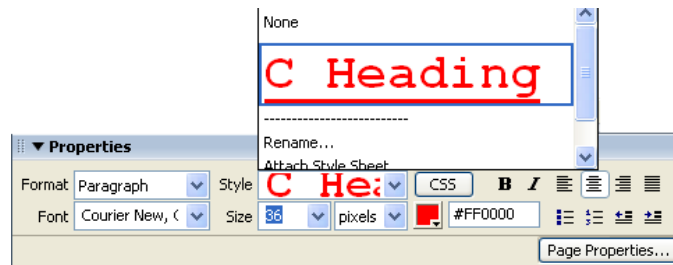


Figure 5 - Apply the C\_Heading Style

NOTE: Any item can only apply one CSS style per time.

NOTE: When an asterisk (\*) appears next to the file name, it means the file hasn't been saved. Remember to save the .css file and .html file(s) frequently. The asterick will disappear after the file is saved (see Figure 6).




Figure 6 - File Tags

## Creating Other Types of CSS Style Rules

Below are instructions to create some of the more commonly used CSS styles.

To create a block CSS style:

1. Click the **New CSS Rule** button .
2. Type “C\_content” inside the *Name:* text box ► Click **OK** (see Figure 7).
3. Select the **Block** category and change the default values as follows:  
**Word spacing:** = 12 points; **Letter spacing:** = 3 points; **Text align:** = right;  
**Text indent:** = 20 pixels.
4. Click **OK** (see Figure 8).
5. Highlight one paragraph and apply the style to see the result.

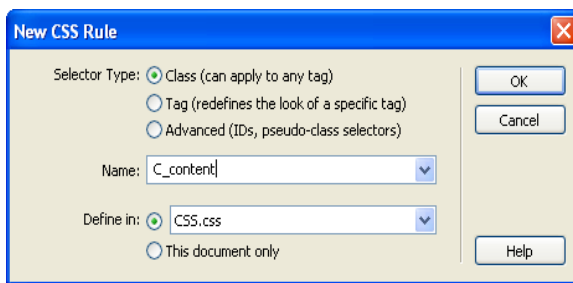


Figure 7- New CSS Rule Window (C\_content)

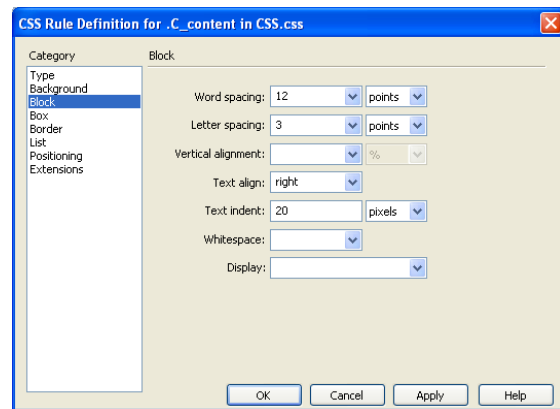



Figure 8 - CSS Rule Definition Window (C\_content)

To create a box CSS style:

1. Click the **New CSS Rule** button .
2. Type “C\_wrapFirst” inside the *Name:* text box ► Click **OK** (see Figure 9).
3. Select the **Box** category and change the default values as follows:  
**Width:** = 50 pixels; **Height:** = 50 pixels; **Float:** = left (see Figure 10).
4. Click **OK**.
5. Highlight the first letter of one paragraph and apply the style to see the result.

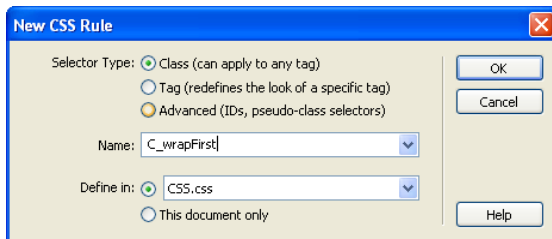


Figure 9 - New CSS Rule Window (C\_wrapFirst)

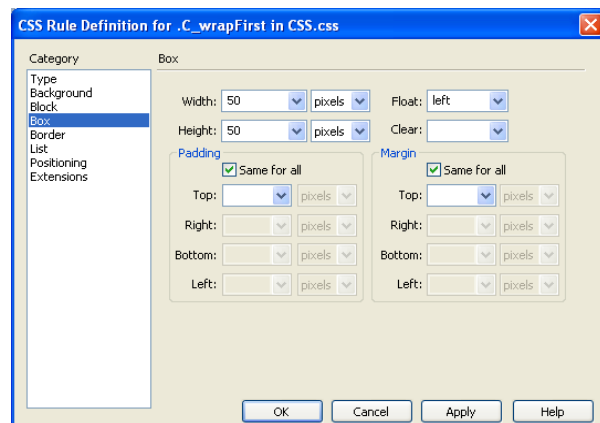



Figure 10 - CSS Rule Definition Window (C\_wrapFirst)

To create a border CSS style:

1. Click the **New CSS Rule** button .
2. Type “C\_border” inside the *Name:* text box ► Click **OK** (see Figure 11).
3. Select the **Border** category and change the default values as follows:  
**Style** = double; **Width** = medium; **Color** = black (see Figure 12).
4. Click **OK**.
5. Highlight the first paragraph and apply the style to see the result.

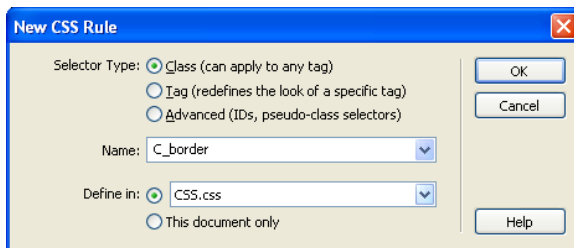


Figure 11 - New CSS Rule Window (C\_border)

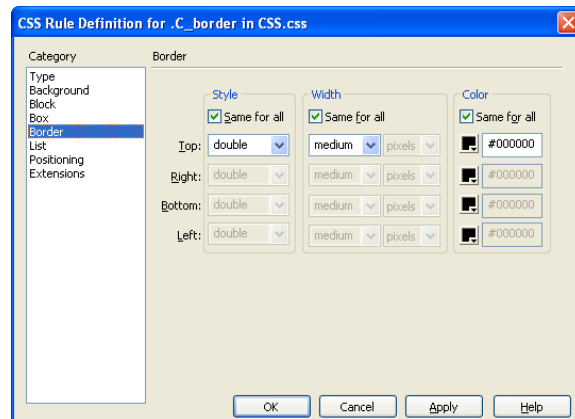



Figure 12 - CSS Rule Definition Window (C\_border)

To create a list CSS style:

1. Click the **New CSS Rule** button .
2. Type “C\_list” inside the *Name:* text box ► Click **OK** (see Figure 13).
3. Select the **List** category ► Click the **Browse...** button to look for desired picture.
4. The *Select Image Source* window appears. Select the “list.gif” file and click **OK** (see Figure 14).
5. Click **OK** (see Figure 15).
6. Highlight the list and apply the style to see the result.

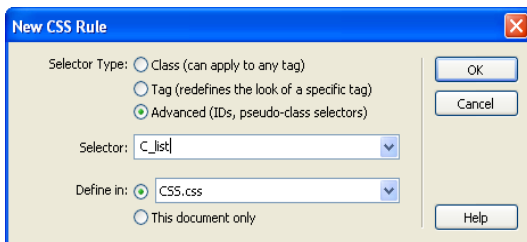


Figure 13 - New CSS Rule Window (C\_list)

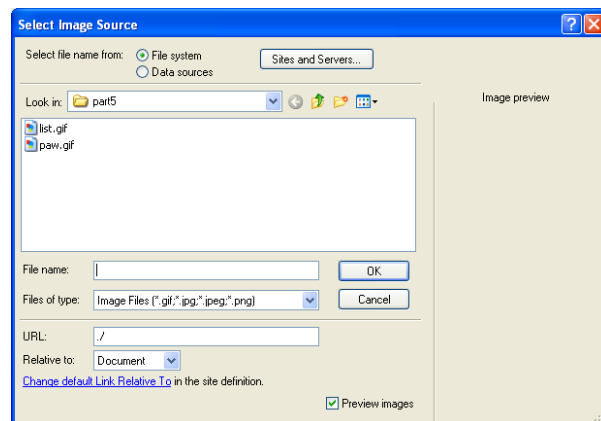


Figure 14 - Select Image Source Window

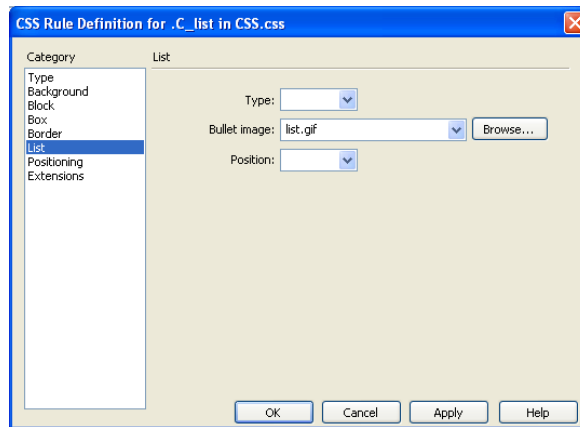



Figure 15 - CSS Rule Definition Window (C\_list)

To create an extension CSS style:

1. Click the **New CSS Rule** button .
2. Type “C\_extension” inside the *Name:* text box ► Click **OK** (see Figure 16).
3. Select the **Extensions** category and change the default value as follows:  
**Cursor:** = crosshair (see Figure 17).
4. Click **OK**.
5. Highlight an area and apply the style to see the result.

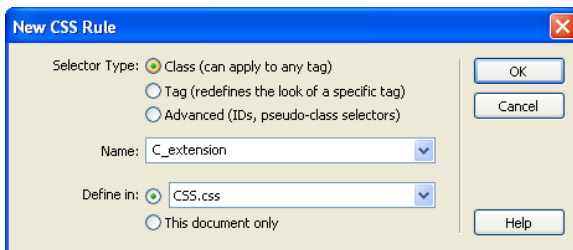


Figure 16 - New CSS Rule Window (C\_extension)

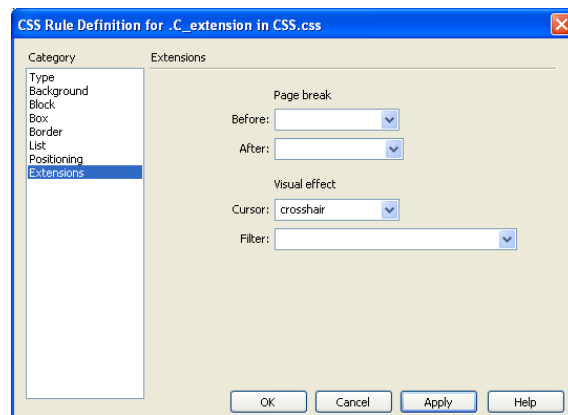



Figure 17 - CSS Rule Definition Window (C\_extension)

To create a background CSS style:

1. Click on the **New CSS rule** button .
2. Select the **Tag** option for *Selector Type*.
3. Click on the drop down arrow in the **Tag** text box: ► Select **body** and click **OK**.
4. Go to the background category ► Click on the **Browse...** button to open the *Select Image Source* window. Select “**paw.gif**” and click **OK** (see Figure 19).
5. Change the default value of **Repeat:** text box to repeat-y; **Attachment:** text box to fixed (see Figure 20).
6. Click **OK**.

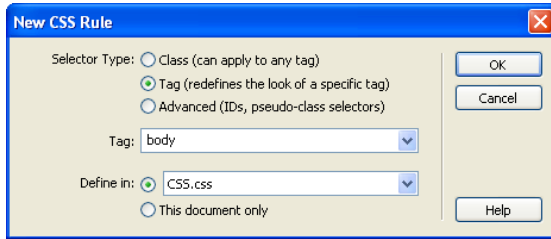


Figure 18 - New CSS Rule Window (Body Tag)

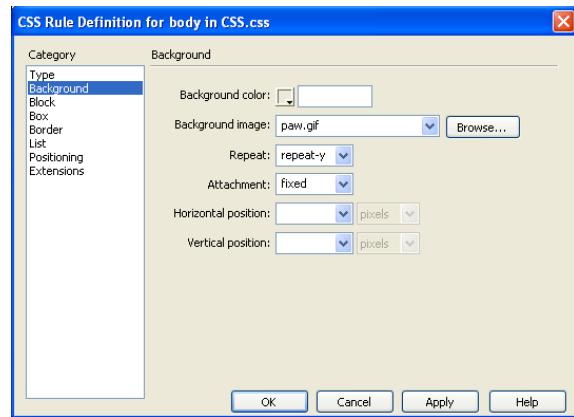


Figure 19 - CSS Rule Definition Window (Body)

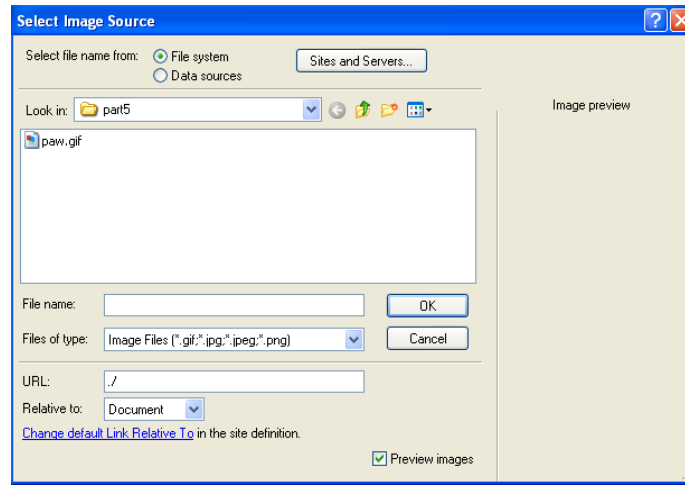



Figure 20 - Select Image Source Window (paw.gif)

## Editing CSS Styles

CSS style sheets, once created and saved, can be easily modified or deleted. Follow steps below.

To modify an existing CSS style sheet:

1. Make sure the **All** tab is selected.
2. Click on the existing CSS style “C\_content” which is needed to be modified.
3. Click the **Edit Style...** button  (see Figure 21).
4. The *CSS Rule Definition for .C\_content in CSS.css* window re-opens (see Figure 22).
5. Change **Text align:** left and **Word spacing:** 10 points.
6. Click **Apply** then click **OK**.
7. Save the “CSS.css” sheet.

NOTE: Every time the CSS style is changed, the .css file needs to be saved again to be updated.

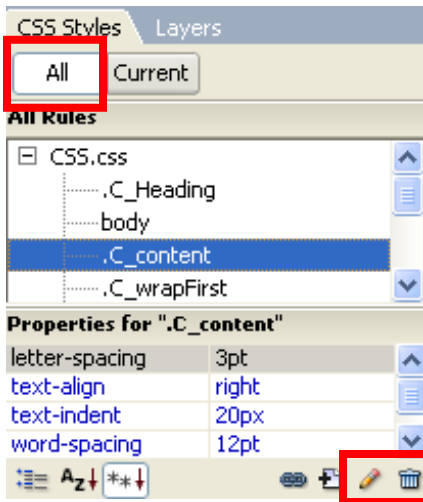


Figure 21 - Edit/Delete a Style

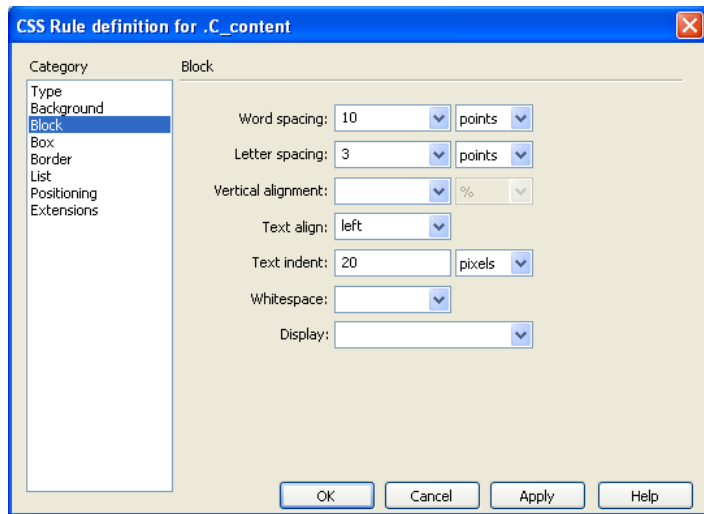



Figure 22 - CSS Rule Definition (Edit Style)

To delete an existing CSS style:

1. Click on the style “C\_wrapFirst” which needs to be deleted.
2. Click the **Delete CSS Rule** button  (see Figure 21).

NOTE: Once the CSS rule is deleted, it can not be traced back.

## Attaching Existing Style Sheets to Other Files

After defining CSS style rules in the *New Style Sheet File*, users can attach customized style sheet to different documents without having to go through the same formatting procedure.

To attach an existing CSS style sheet:

1. Open the “*attach\_CSS.htm*” file.
2. Click the **Attach Style Sheet** button  on CSS style panel. The *Attach External Style Sheet* window appears.

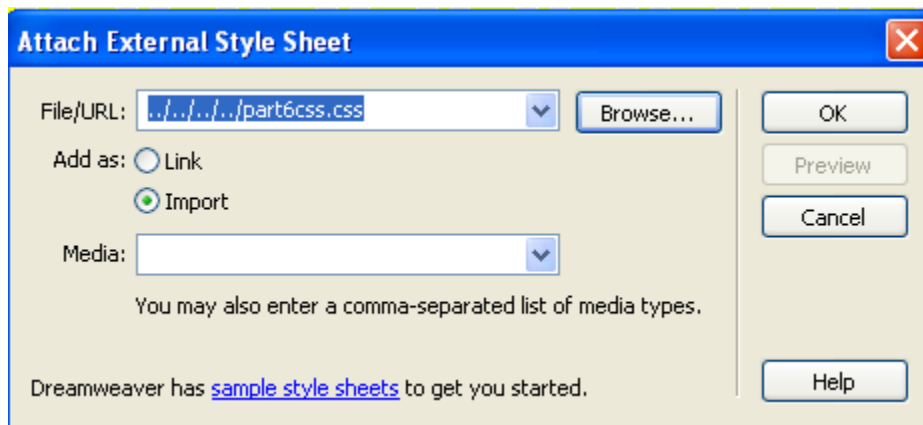
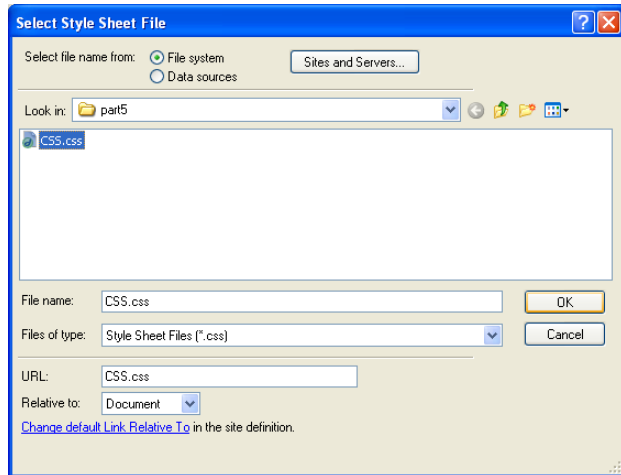
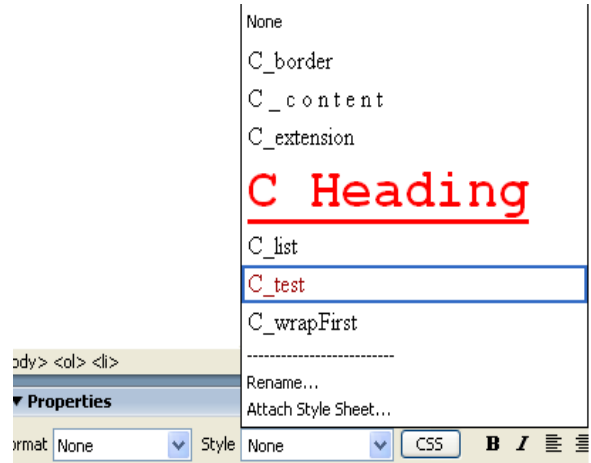


Figure 23 - Attach External Style Sheet Window

3. Click on the **Browse...** button to look for the “*CSS.css*” file (see Figure 23).
4. Once the *Select Style Sheet File* window appears, select the “*CSS.css*” file and then click **OK** (see Figure 24).
5. For *Add as:* select **Import** then click **OK**.
6. After importing the style sheet, all the style rules are inside the *Style* textbox on the properties panel and are ready to be used.



**Figure 24 - Select Style Sheet File Window**



**Figure 25 - Properties Panel with Imported Styles**

NOTE: Using “Import” method is safer than using “Link” method. If users use “Link” method and view the files in older version of Internet browser, the screen may crash.