

Dialing Connection for Windows XP

INFORMATION TECHNOLOGY SERVICES
California State University, Los Angeles

Version 1.1

Summer 2005

Contents

Before Getting Started.....	2
Creating a Network Connection	2
Creating a Cal State LA Dial-Up Connection.....	2
Setting up Dial-up Connection Properties	5
Adding an Alternative Dialing Number.....	7
Accessing the Network.....	8
Solving Possible Connection Problems	9
Disconnecting the Network	10

For additional written instructional guides, visit us @ <http://www.calstatela.edu/handouts>

Dialing Connection for Windows XP

This handout will show faculty, staff, and students can access e-mail and the Internet from their home computer using Windows XP to establish a dial-up connection utilizing their local telephone line.

Before Getting Started

Before getting started, it is necessary to have the following:

- Valid NIS account (user ID and password).
- Internet Explorer web browser installed on the computer.
- A modem line connection to an active telephone line.

!NOTE:

The CSULA dial-up connection is only cost-effective if the user's workstation is located within a local calling radius of Cal State LA (usually within 12 miles). To check if any particular location is within a local calling radius of Cal State LA, call the telephone company. For the user outside the local calling radius, it is more cost effective to subscribe to a commercial Internet Service Provider and connect to the Cal State LA subscription database via the Proxy Server.


Creating a Network Connection

Windows XP allows creating a dial-up network connection without the need of the Eagle Link Remote Access Toolkit version II CD. By configuring a PC, a user can connect to the campus modem pool to read emails and surf the Internet.

CREATING A CAL STATE LA DIAL-UP CONNECTION

Before a user is able to use a Cal State Dial-Up, it is necessary to build-up a connection.

To create a Cal State LA Dial-Up connection:

1. Double-click the **My Network Place** icon  on the desktop.

Or

1. Click the **Start** menu, ► **Control Panel** command. The *Control Panel* window opens (see Figure 1).
2. Double-click the **Network and Internet Connections** link. The *Network and Internet Connections* dialog box opens (see Figure 2).

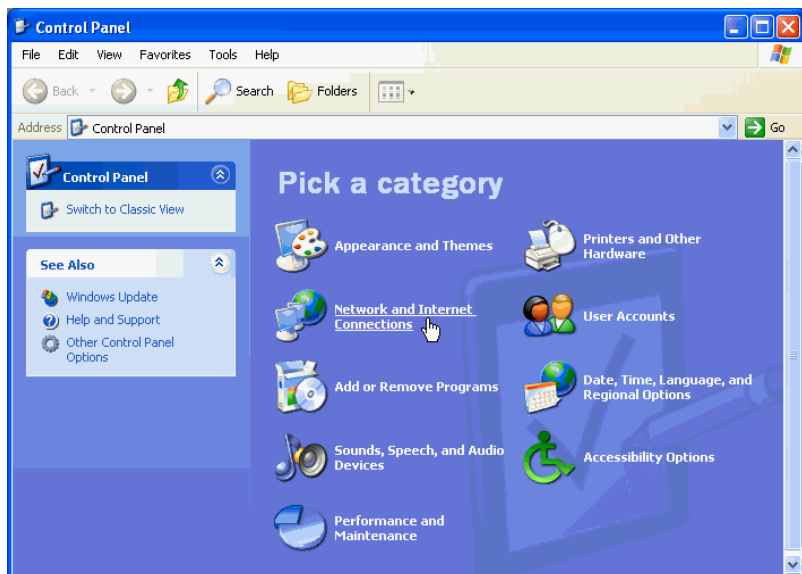


Figure 1 - Control Panel Window

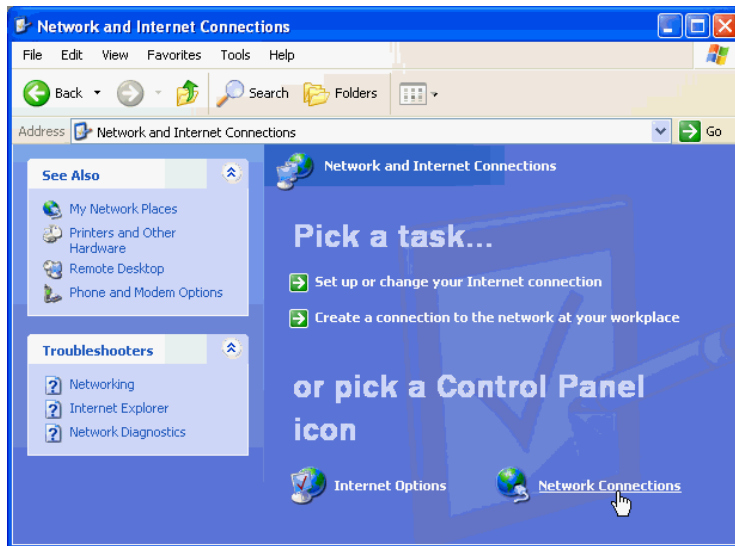


Figure 2 - Network and Internet Connection Window

!NOTE:

User with Windows XP Home Edition needs to click the **Create a New Connection** link from the menu on the left.

3. Click the **Network Connections** link from the *or pick Control Panel icon* section. The *Network Connections* dialog box opens (see Figure 3).
4. Select the **Create a new connection** link from the **Network Tasks** pane on the left. The *New Connection Wizard* dialog box opens (see Figure 4).

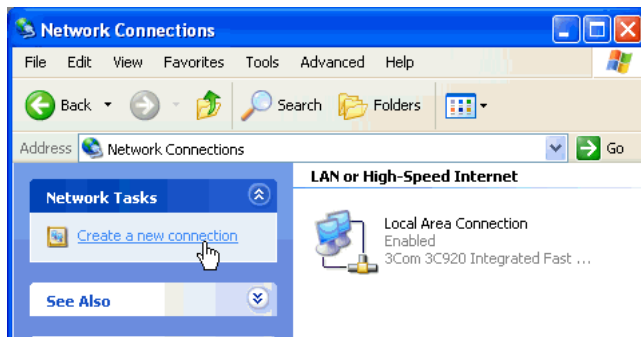


Figure 3 – Network Connections Window



Figure 4 – New Connection Wizard Window

5. Click the **Next >** button to begin to create a connection to the internet. The *New Connection Wizard* asks the user to choose network connection type (see Figure 5).
6. Under the *Network Connection Type*, click the **Connect to the Internet** option button ► **Next >** button. The *New Connection Wizard* opens the next step asking to choose the connecting type (see Figure 6).
7. Click the **Set up my connection manually** option button ► **Next >** button. The *New Connection Wizard* asks to choose the connecting way (see Figure 7).



Figure 5 – Network Connection Type for the New Connection Wizard

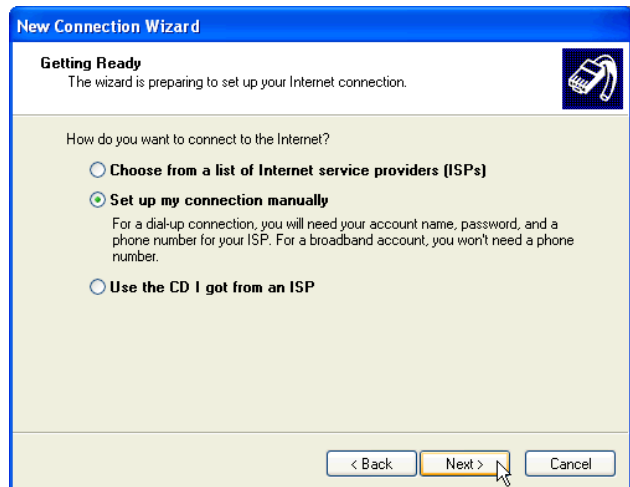


Figure 6 – Getting Ready for the New Connection Wizard

- Click the *Connect using a dial-up modem* option button ► **Next >** button. The *New Connection Wizard's* next step opens asking the service provider's name (see Figure 8)

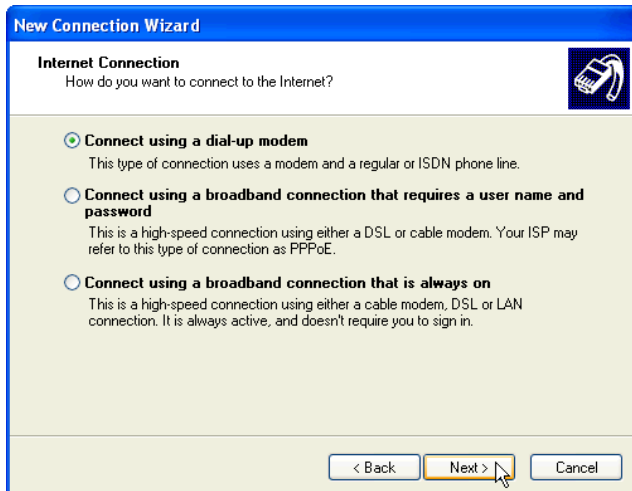


Figure 7 – Internet Connection for the New Connection Wizard

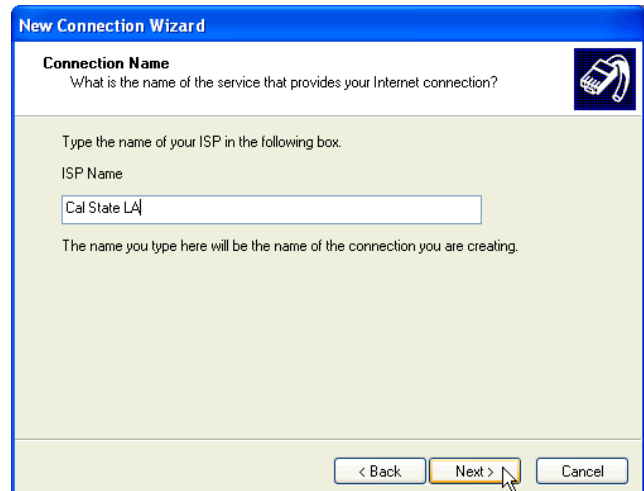


Figure 8 – Connection Name for the New Connection Wizard

- Enter [Cal State LA] in the *ISP Name* text box ► **Next >** button. The *New Connection Wizard* asks to enter a phone number (see Figure 9).
- The Students should enter a general number, which is [13233430462], Faculty/Staff members enter [13233430449] ► **Next >** button. The *New Connection Wizard* asks to enter the account information (see Figure 10).

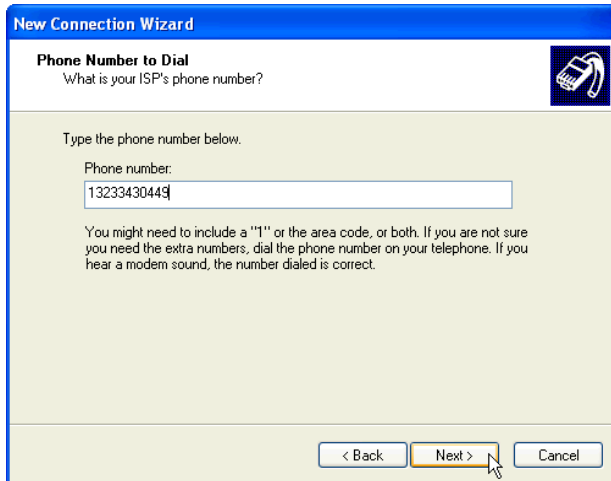


Figure 9 – Phone Number to Dial for the New Connection Wizard



Figure 10 – Internet Account Information for the New Connection Wizard

11. In the *User name:* text box, enter the NIS Username.
12. In the *Password:* text box, enter the password.
13. In the *Confirm password:* text box, reenter the password.
14. Deselect the *Turn on Internet Connection Firewall for this connection* option ► **Next >** button. The *New Connection Wizard* opens the confirmation window indicating that the connection is complete (see Figure 11).
15. Select the *Add a shortcut to this connection to my desktop* check box ► **Finish** button. The *Connect Cal State LA* window appears (see Figure 12).



Figure 11 – Completing the New Connection Wizard

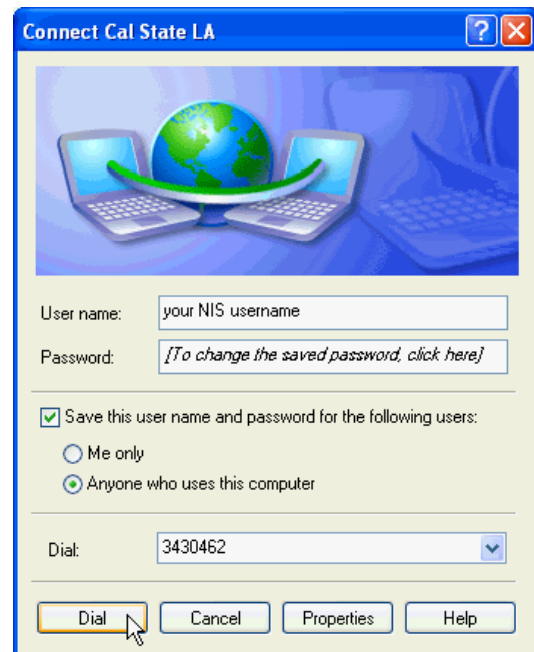


Figure 12 – Connect Cal State LA Dialog Box

16. Enter the NIS Username and Password ► **Dial** button to connect to Cal State LA's modem Pool.

SETTING UP DIAL-UP CONNECTION PROPERTIES

After completion of creating a dial-up connection, it is essential to set up the properties.

1. At the *Connect Cal State LA* window, click the **Properties** button (see Figure 12). The *Cal State LA Properties* dialog box opens (see Figure 14).
2. Click the *General* Tab ► **Configure...** button. The *Modem Configuration* dialog box opens (see Figure 14).

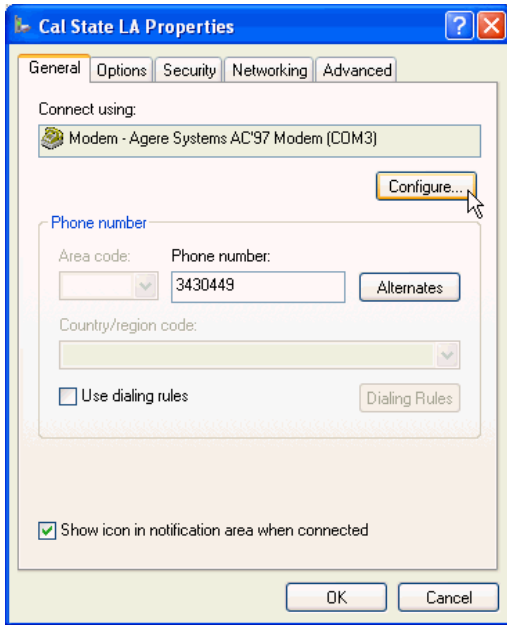


Figure 13 – Connection Properties Dialog Box

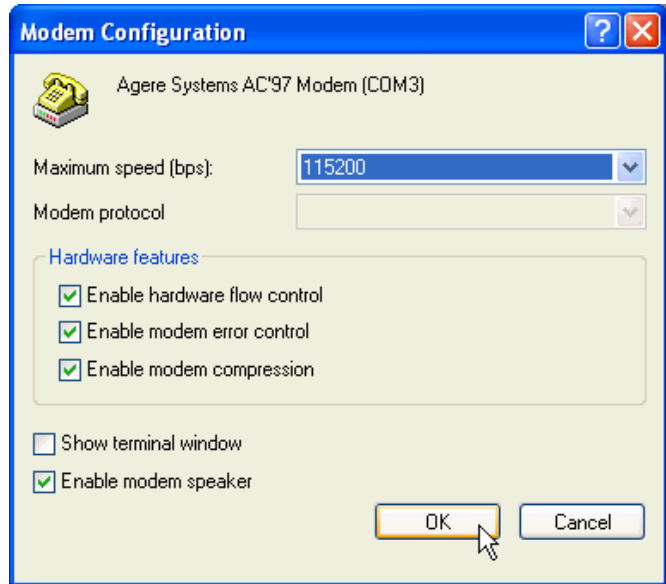


Figure 14 – Modem Configuration Dialog Box

3. Change the number in the *Maximum speed (bps):* drop-down arrow to *115200*.
4. Under the *Hardware features* section, enable all three options by clicking the check boxes ► **OK** button. The *Modem Configuration* window closes.
5. On the *Cal State LA Properties* dialog box, click the *Networking* Tab ► **Settings** button (see Figure 15). The *PPP settings* dialog box opens (see Figure 16).

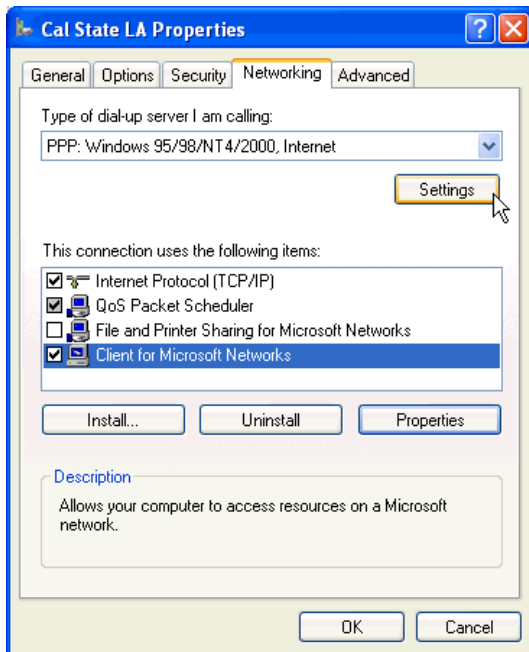


Figure 15 – Networking Tab of Cal State LA Properties

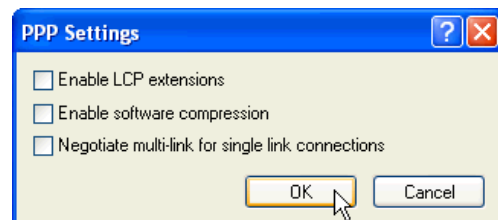


Figure 16 – PPP Settings Window

6. Deselect all three options ► **OK** button.

7. On the *Cal State LA Properties* dialog box, select the *Client for Microsoft Networks* option from the *This Connection uses the following items:* list box ► **OK** button.

!NOTE:

Depending on the operating system, the *QoS Packet Scheduler* option may not appear in the *This Connection uses the following items:* list box.

Adding an Alternative Dialing Number

For the user who has the dial-up connection number besides the one provided by Cal State LA, it is recommended to add it as an alternative number in case of emergency.

To add an alternative dialing number:

1. Double-click the **Cal State LA** shortcut icon  on the desktop. The *Connect Cal State LA* dialog box opens.
2. Click the **Properties** button. The *Cal State LA Properties* dialog box opens (see Figure 17).
3. Click the **Alternates** button. The *Alternate Phone Numbers* dialog box opens (see Figure 18).

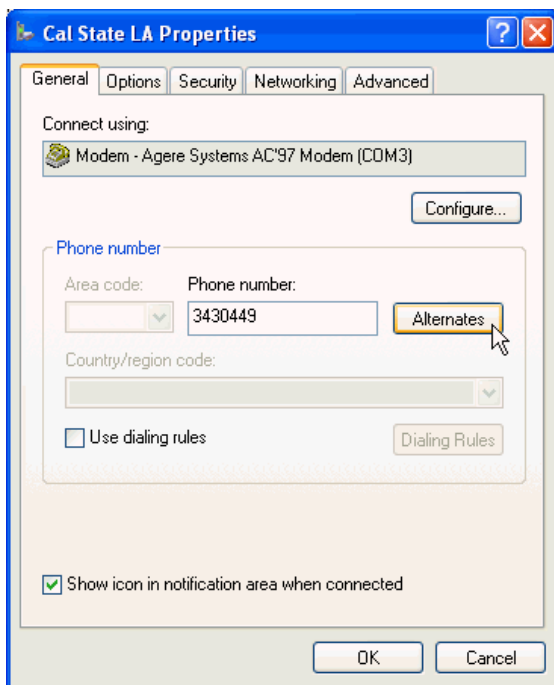


Figure 17 – Cal State LA Properties Dialog Box

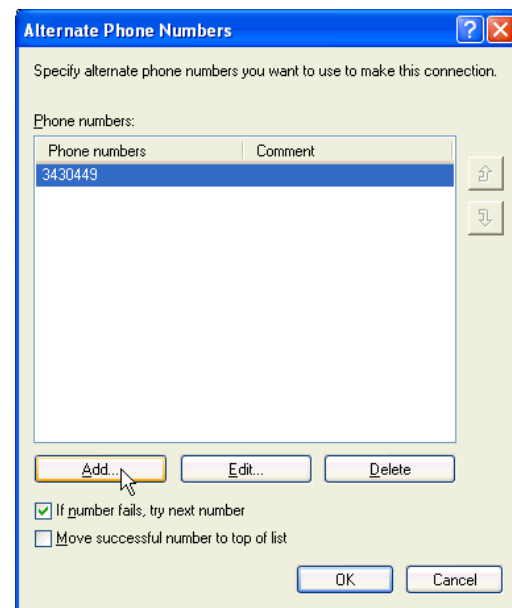


Figure 18 – Alternate Phone Numbers Dialog Box

4. Click the **Add...** button. The *Add Alternate Phone Number* dialog box opens (see Figure 19).
5. In the *Phone number:* text box, enter the number ► **OK** button. The alternative phone number appears in the *Phone Numbers:* list box of the *Alternate Phone numbers* dialog box (see Figure 20).

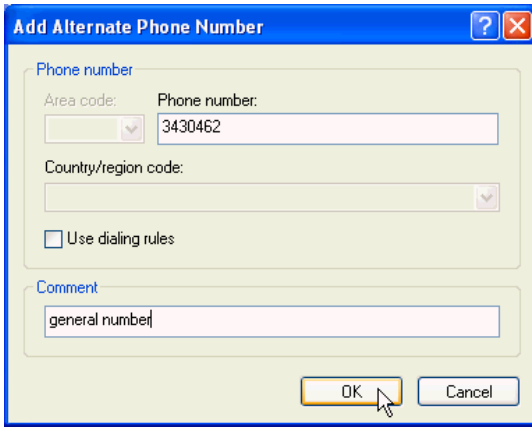


Figure 19 – Add Alternate Phone Number Dialog Box

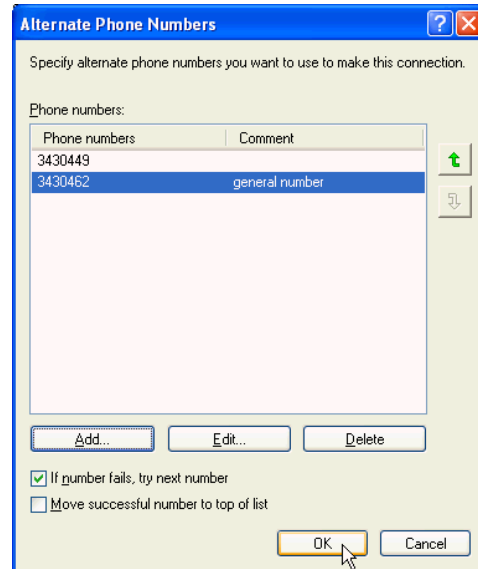


Figure 20 – Alternate Phone Numbers Dialog Box

Accessing the Network

After setting up the entire configuration, the user is now ready to access the network to get Cal State LA Dial-Up connection.

To access the Cal State LA Dial-Up:


1. Double click the **Cal State LA** shortcut icon on the desktop. The *Connect Cal State LA* window opens (see Figure 21).
2. Enter the NIS username and password ► **Dial** button. The *Connecting Cal State LA...* window opens indicating the dialing system (see Figure 22). Then the *Connecting Cal State LA...* window verifying the user name and password (see Figure 23).
3. Click the Close button on the pop-up message indicating the connection (see Figure 24).
4. Double-click the **Connection** icon  on the system tray. The Cal State LA Status window opens showing the connection status (see Figure 25).



Figure 21 – Connect Cal State LA Dialog Box

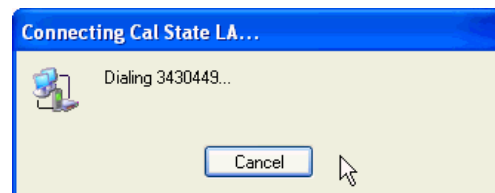


Figure 22 – Connecting Cal State LA: Dialing Window

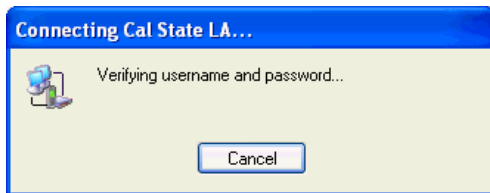


Figure 23 – Connecting Cal State LA Verifying User Name and Password Window

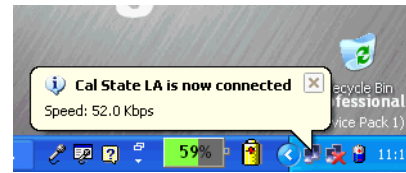


Figure 24 – Connection Pop Up

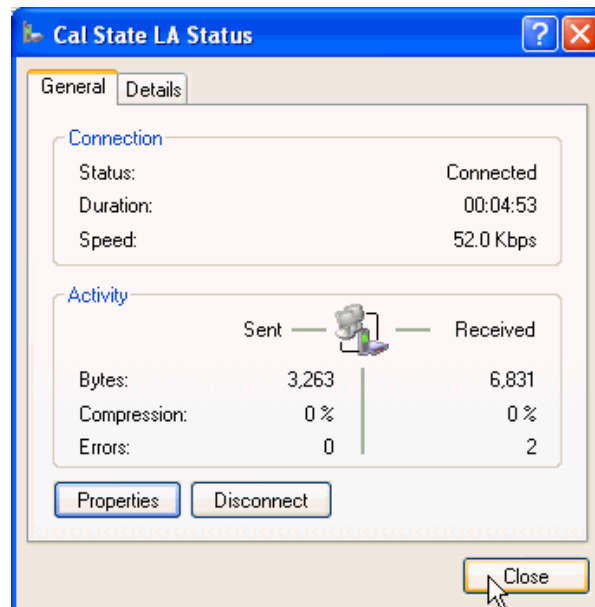



Figure 25 – Cal State LA Connection Status Window

!NOTE:

The connection status can be checked by placing the mouse pointer over the **Connection** icon  (see Figure 26).

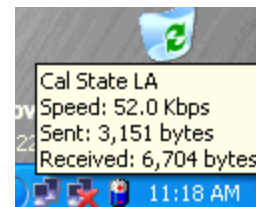


Figure 26 – Connection Status Information

SOLVING POSSIBLE CONNECTION PROBLEMS

If any problems occur while connecting to the network, it is necessary to change the connection settings.

To change the network settings:

1. Double-click the **Cal State LA** shortcut icon on the desktop. The *Connect Sal State LA* dialog box opens.
2. Click the **Properties** button. The *Cal State LA Properties* dialog box opens.
3. Select the *Network* tab ► **Settings** button. The *PPP settings* window opens (see Figure 16).
4. Enable all three PPP settings ► **OK** button.
5. Click the **OK** button to close the *Cal State LA Properties* dialog box.

!NOTE:

If the problem persists, try different combinations of the PPP settings, or contact the Cal State Help Desk at (323) 343 6170 8am – 6pm, Monday-Thursday, 8am-5pm, Friday.

Disconnecting the Network

It is highly recommended to disconnect after finishing surfing the internet.

To disconnect the Cal State LA Dial-Up connection:

1. Right-click the connection icon on the system tray.
2. Select the **Disconnect** option.