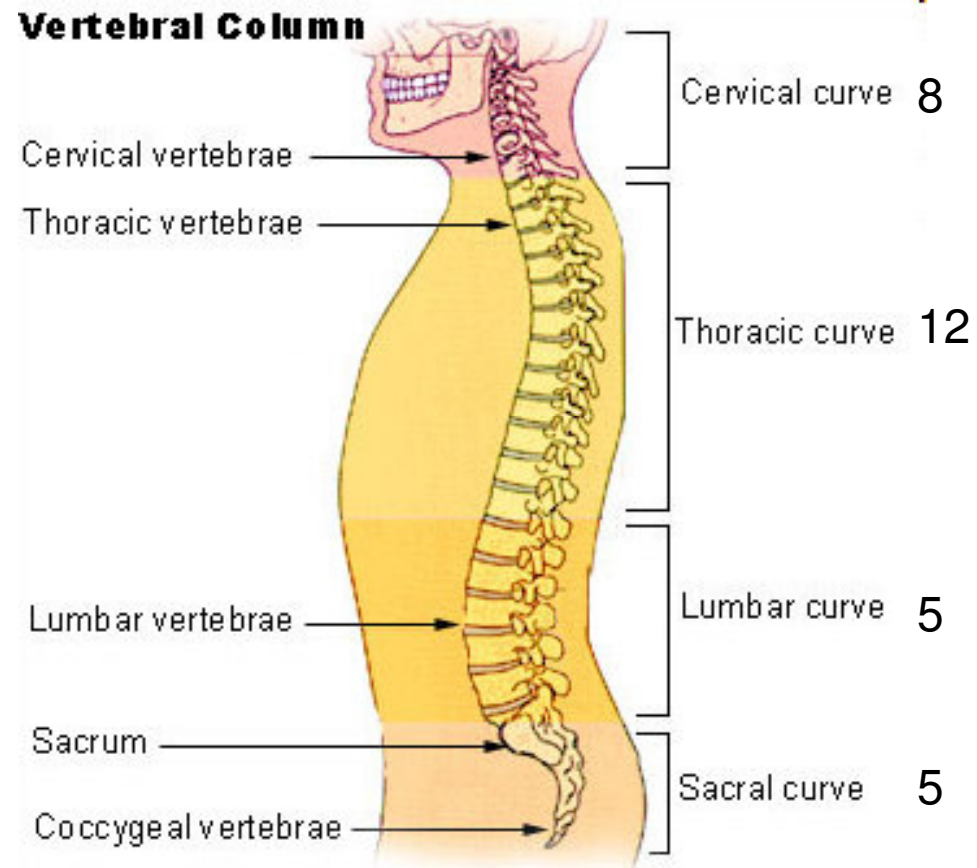
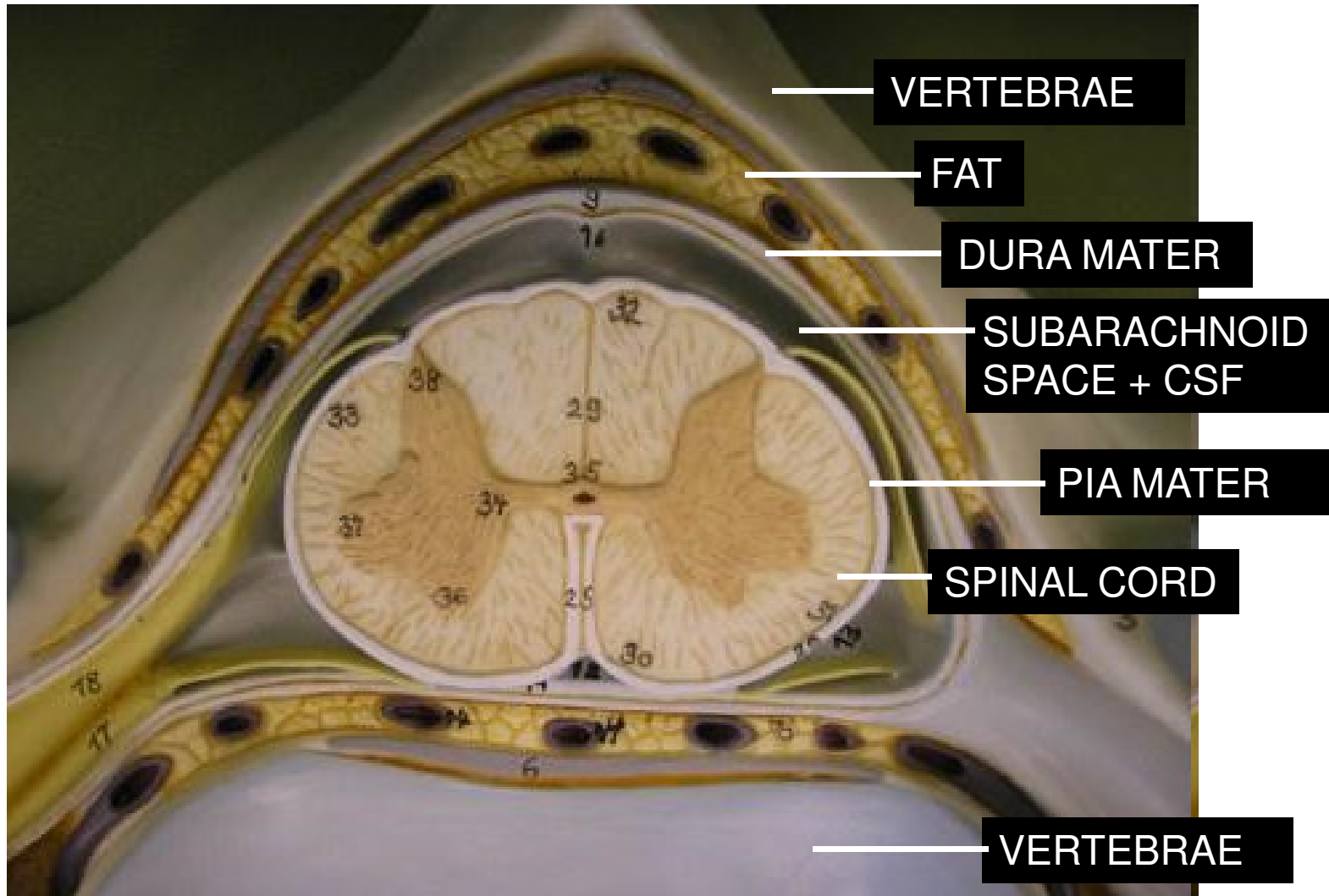


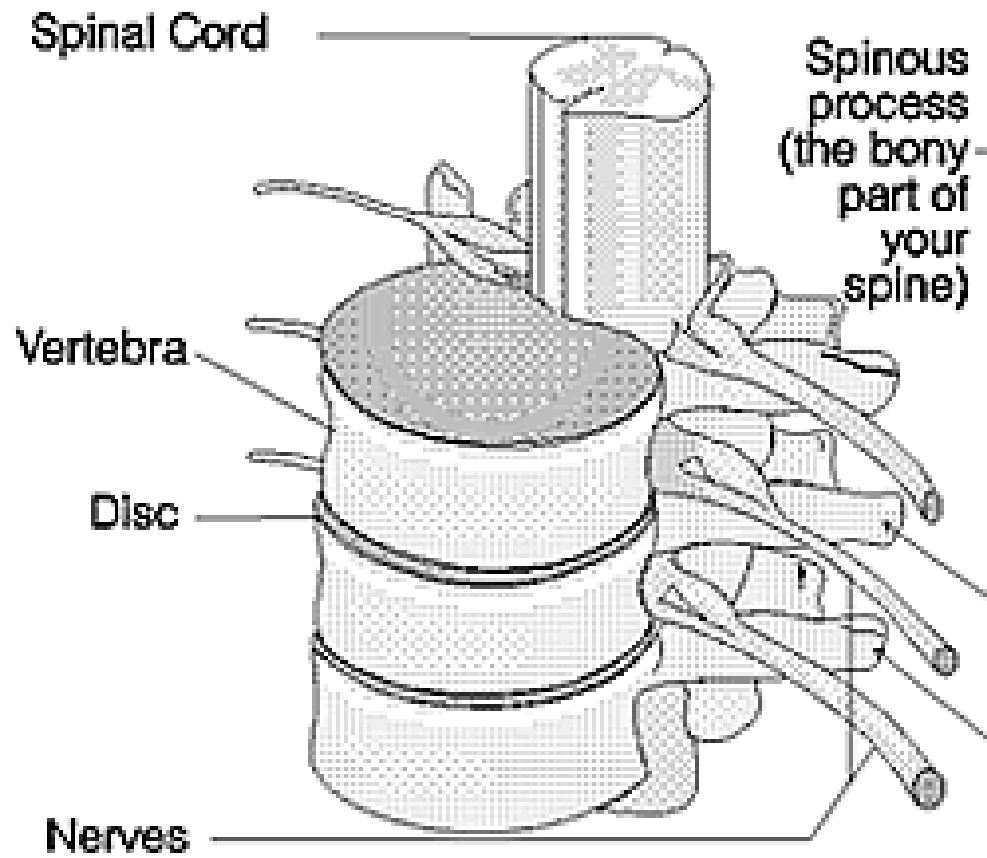
# Spinal Cord Segments



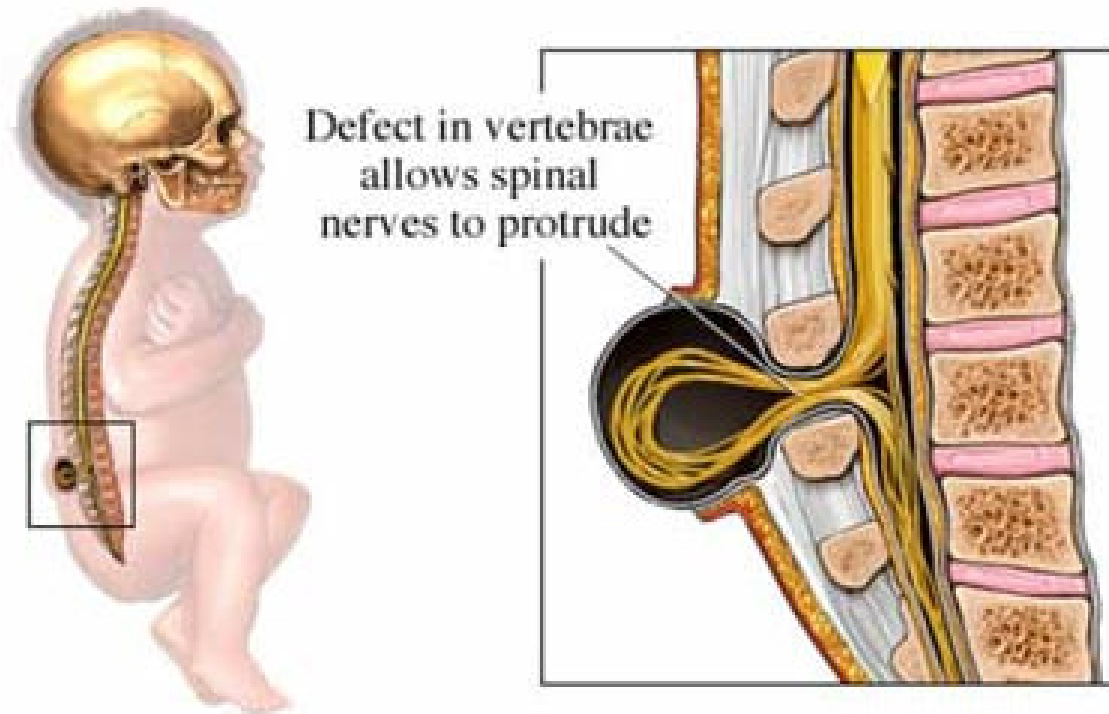
# Spinal Cord Coverings



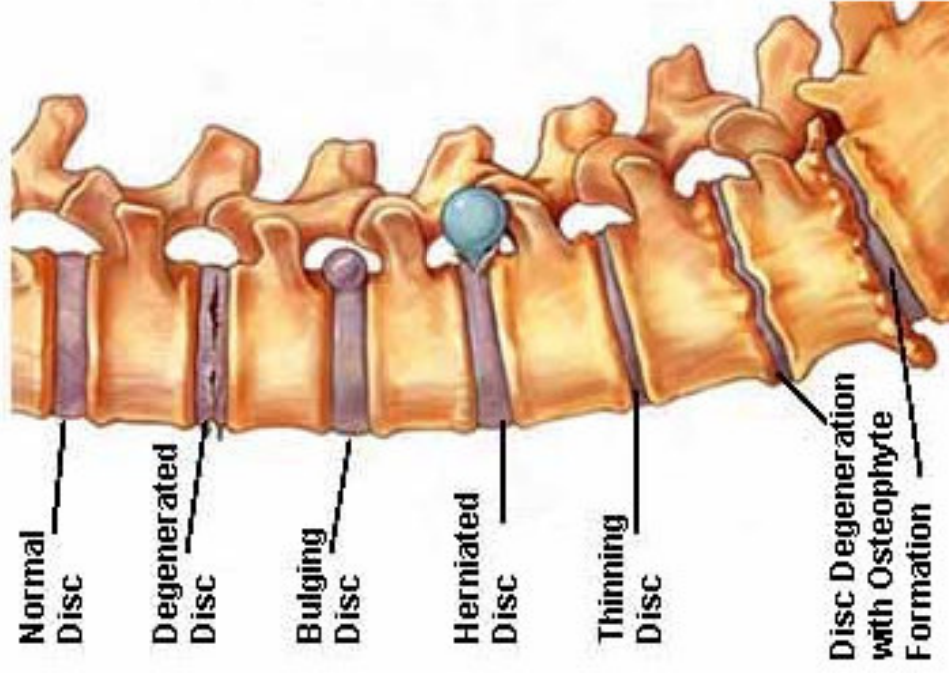
# Spinal Cord Coverings



# Spina Bifida



## Examples of Disc Problems



## Animations

nystagmus

<http://www.youtube.com/watch?v=aifIG0-Fw50>

dysmetria

<http://www.youtube.com/watch?v=jnOckAYNuyk>

dysdiadochokinesia

[http://www.youtube.com/watch?v=gNZFSUdL\\_uc&feature=related](http://www.youtube.com/watch?v=gNZFSUdL_uc&feature=related)

cerebellar gait (broadbased walk)

<http://www.youtube.com/watch?v=eBvzFkcvScg&feature=related>

cerebellar gait (imbalanced during tandem walk) <http://www.youtube.com/watch?v=5Dj827uCP3g&feature=related>