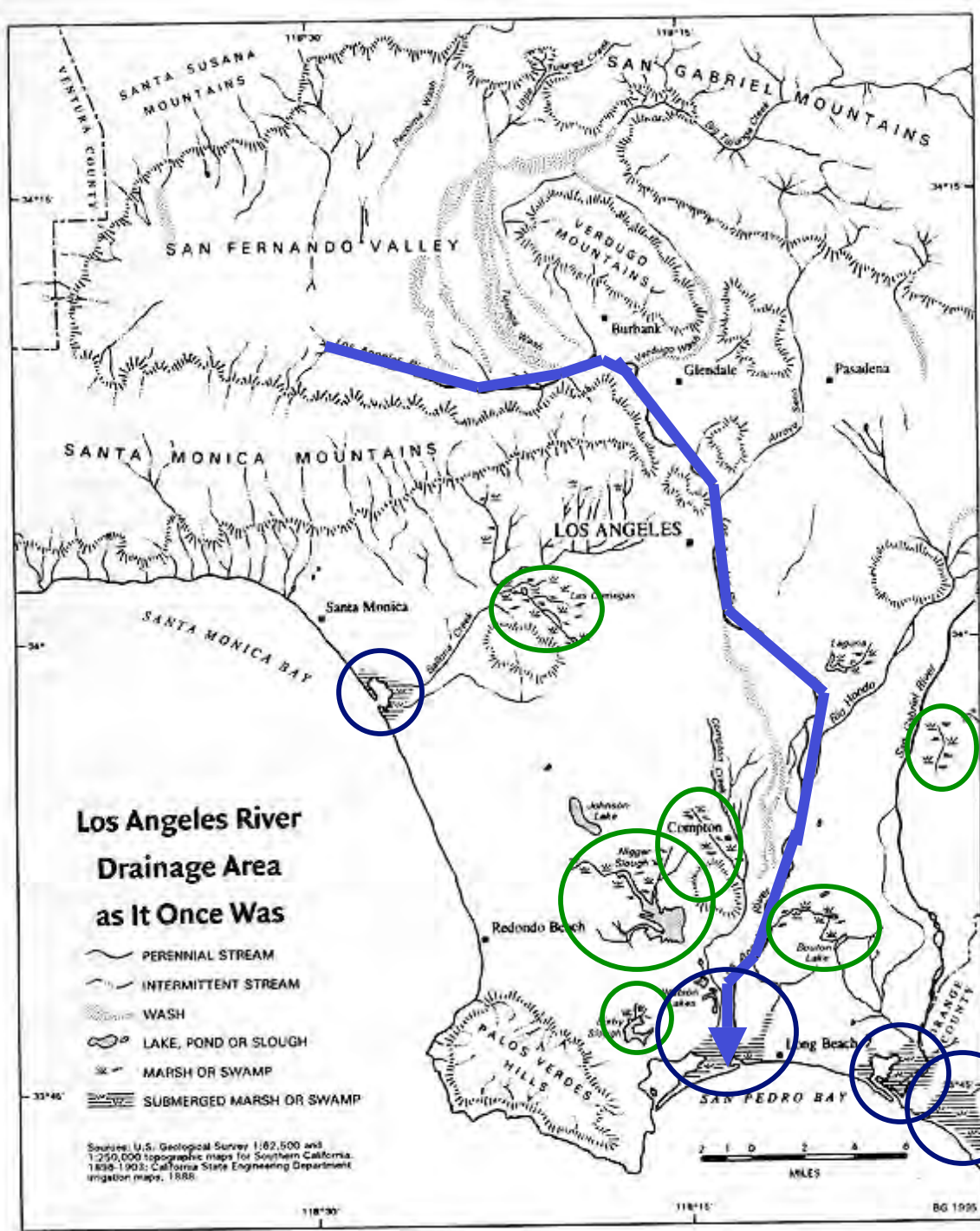


A Map of the Early L. A. River

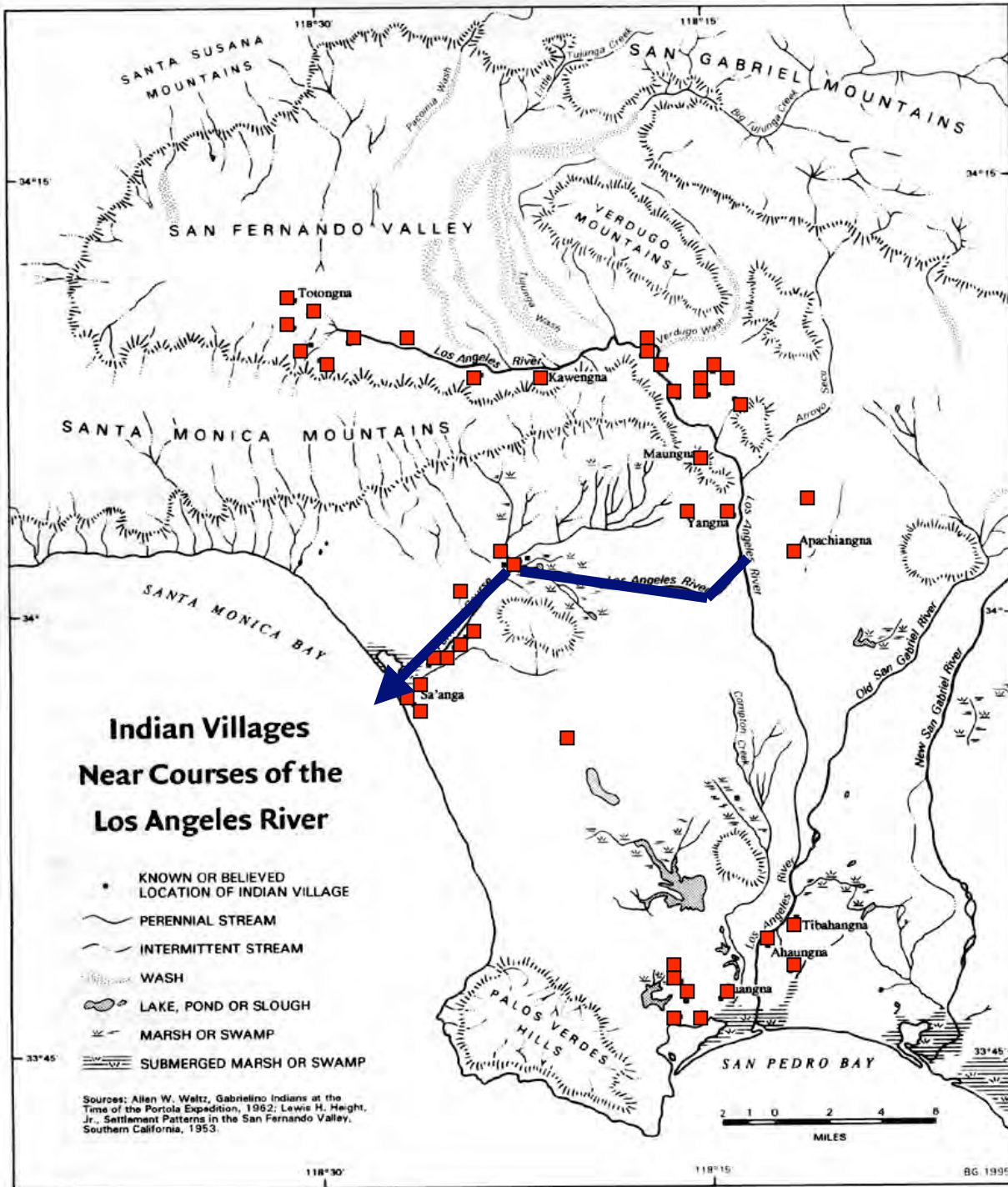
The main channel of the river flows from the San Fernando Valley past the city to the ocean at Long Beach.

There were also numerous swamps and sloughs along the river floodplain...

... as well as coastal wetlands near the ocean.



Source: Los Angeles County Flood Control District
Animation: Courtesy of D.Douglass, 2001



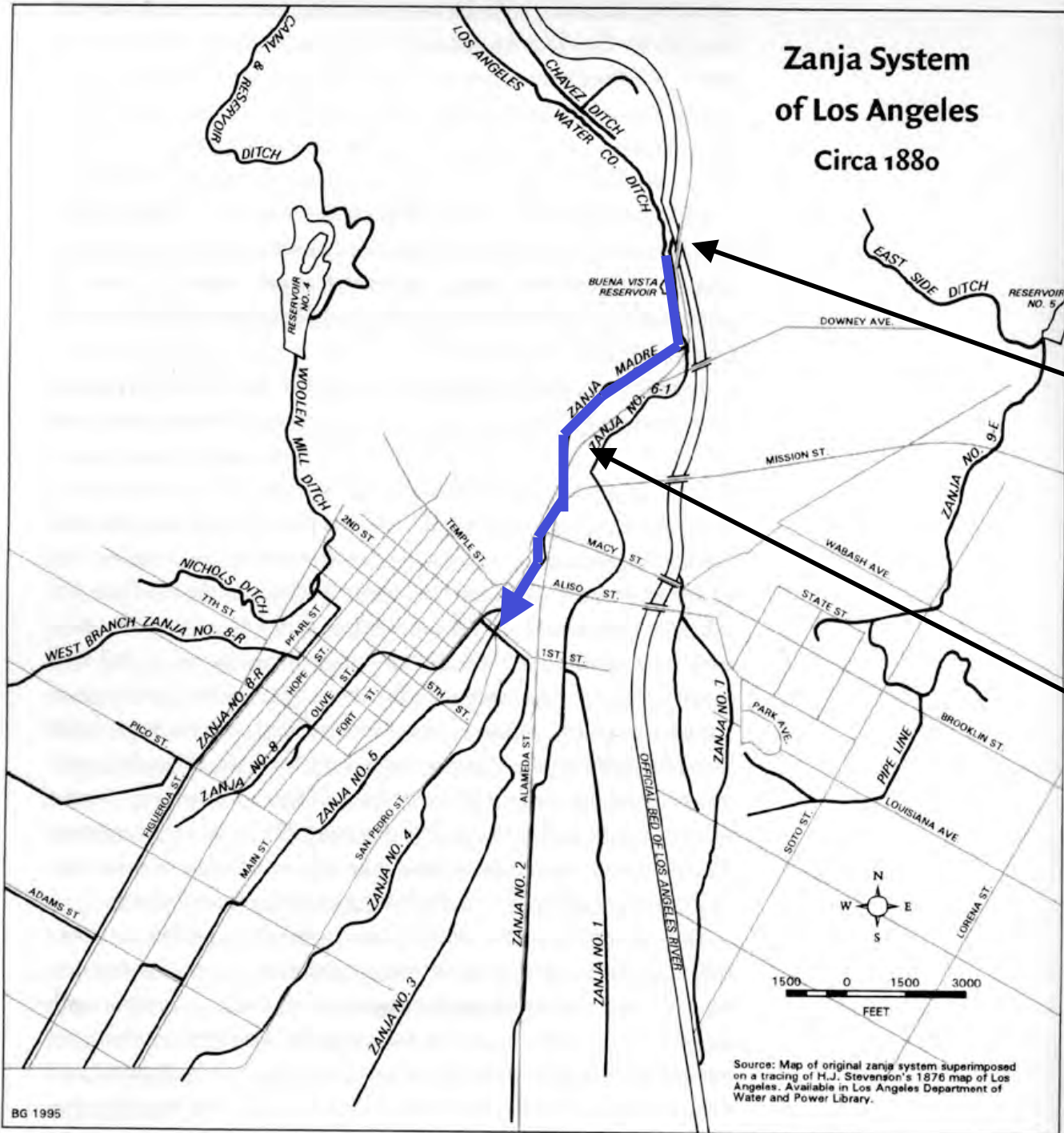
Known Indian Villages along the Los Angeles River

(from Gumpbrech, 1999)

Notice that at times the LA River flowed west, towards what is now Ballona Creek, and Marina del Rey.

Source: Los Angeles County Flood Control District
Animation: Courtesy of D.Douglass, 2001

Zanja System of Los Angeles Circa 1880



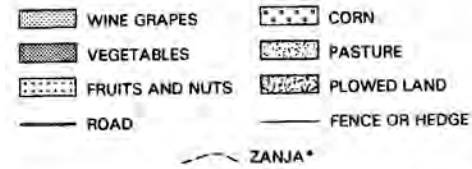
The Zanja Madre

Water was
diverted from the
river upstream...

...then carried
through the ditch
by gravity to the
Pueblo

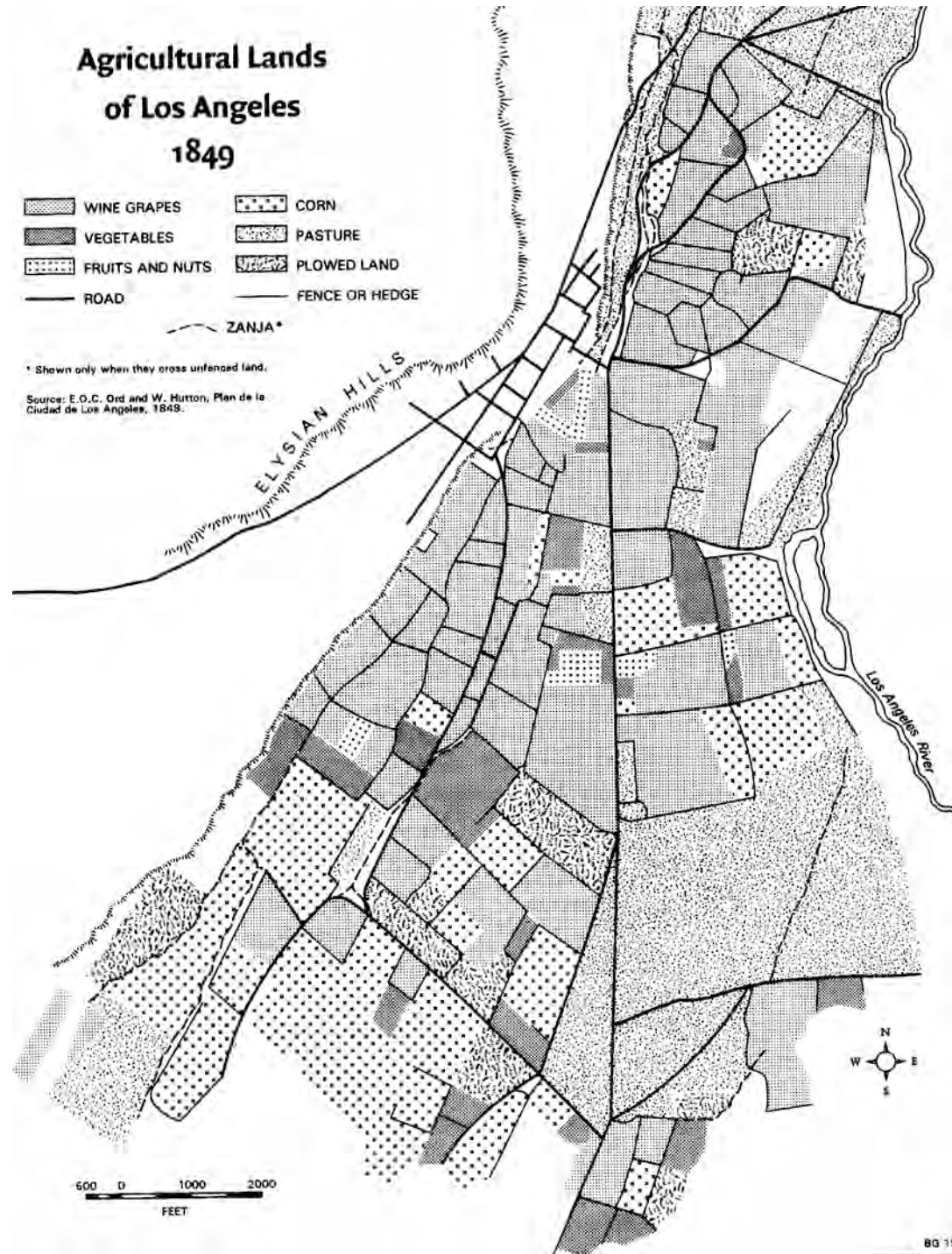
Why do you think
they didn't just
build the Pueblo
down by the river?

Agricultural Lands of Los Angeles 1849

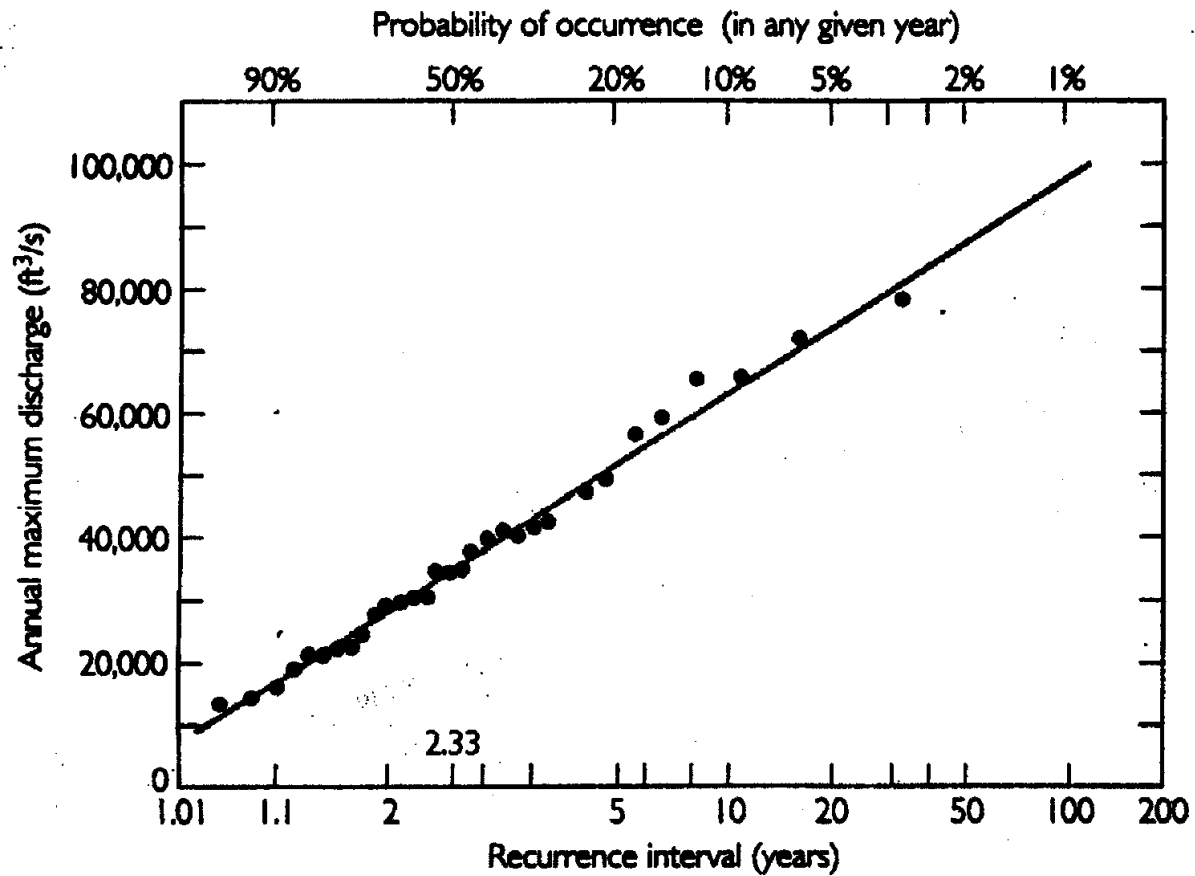


* Shown only when they cross unfenced land.

Source: E.O.C. Ord and W. Hutton, Plan de la Ciudad de Los Angeles, 1849.

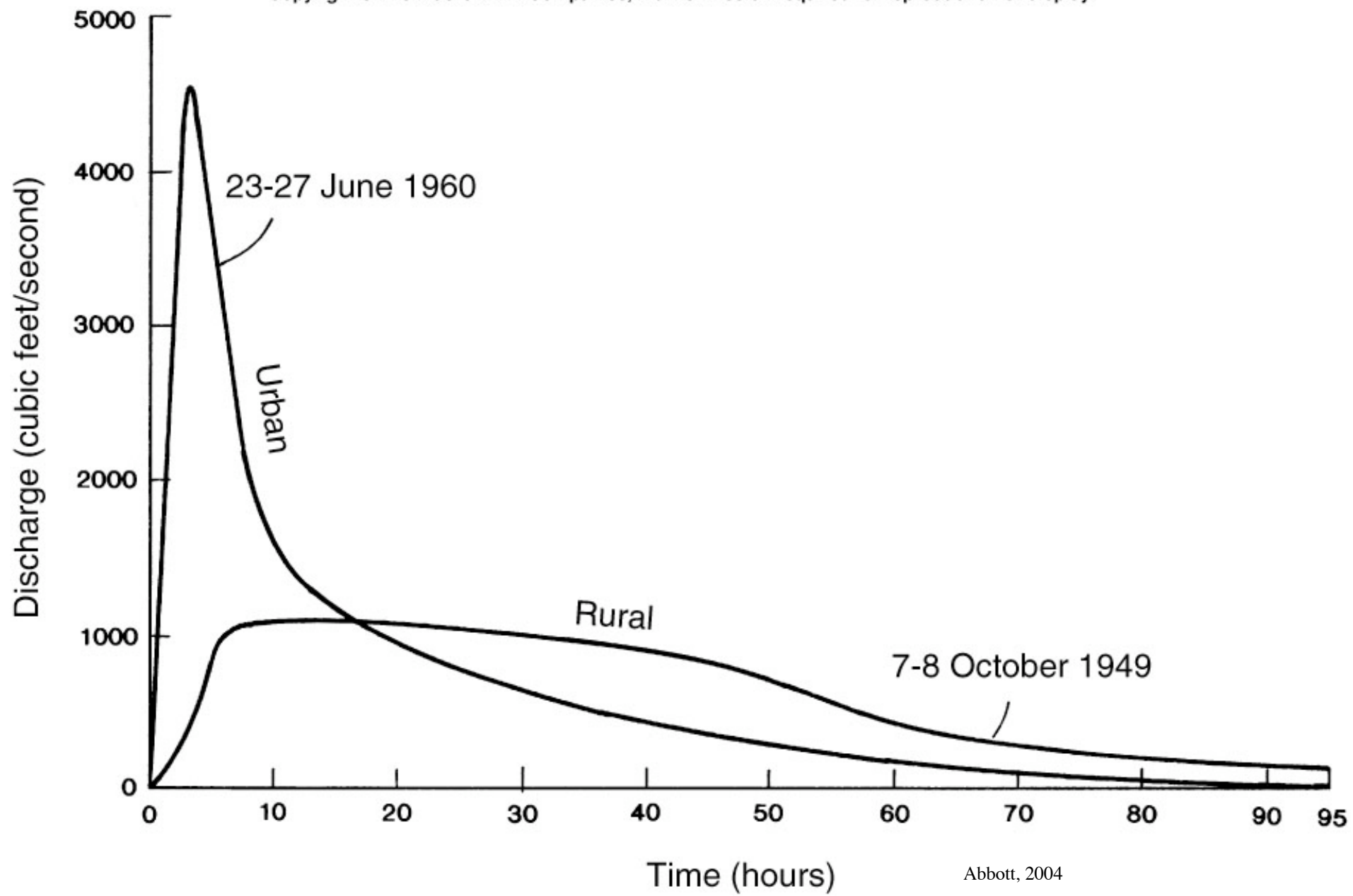


Los Angeles was an agricultural town at the dawn of statehood, with farms occupying at least fifteen hundred acres in the city. Vineyards occupied most of the prime irrigable land north and south of the town center. Corn fields, vegetable gardens, fruit orchards, and pasture were more common further south.
(from Gumpbrech, 1999)



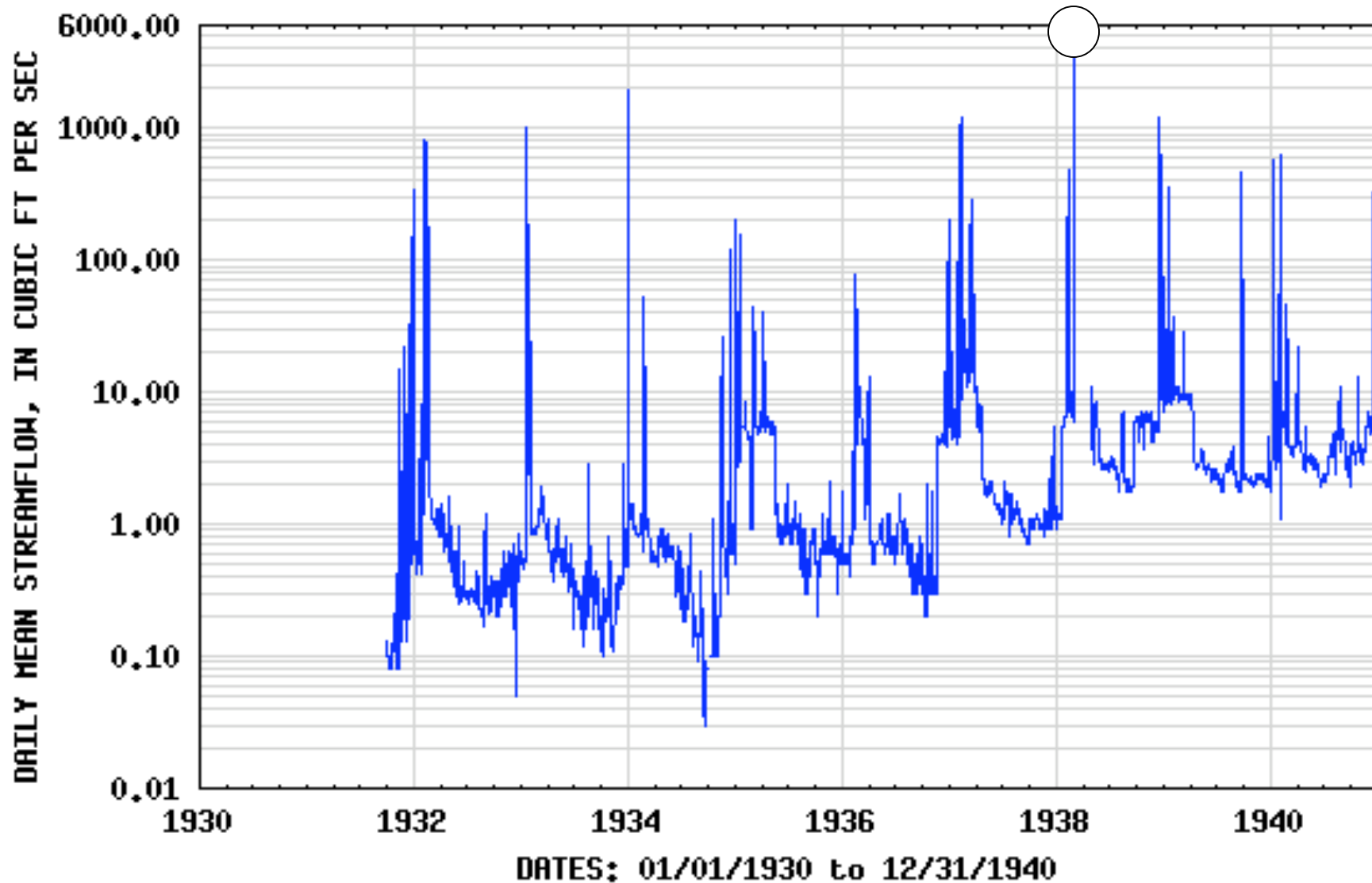
This chance corresponds to an average time interval
(in this case 5 years (20 % = 1 in 5)) D. M. Best, 2004

Copyright © The McGraw-Hill Companies, Inc. Permission required for reproduction or display.



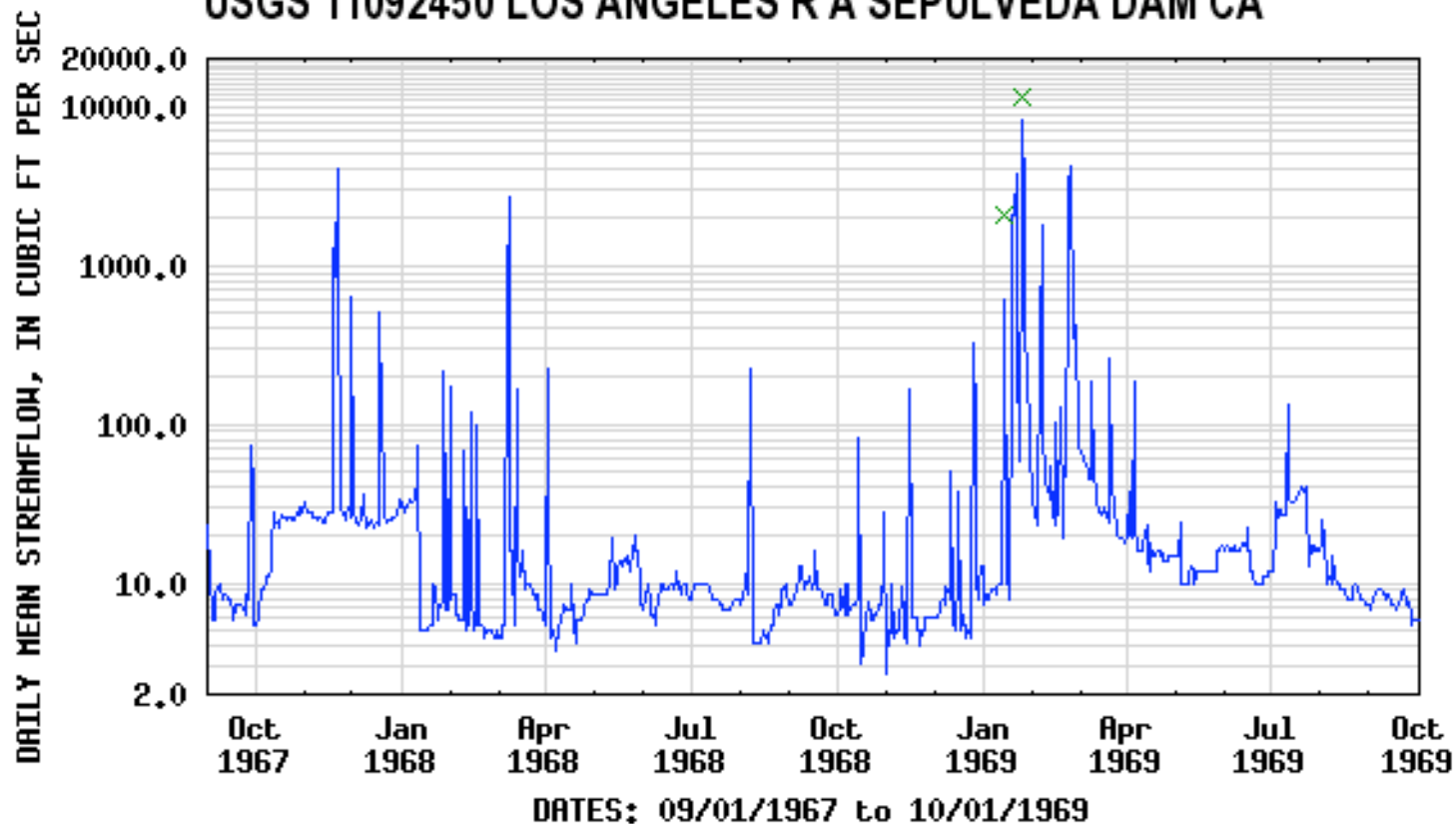
Abbott, 2004

USGS 11092450 LOS ANGELES R A SEPULVEDA DAM CA





USGS 11092450 LOS ANGELES R A SEPULVEDA DAM CA

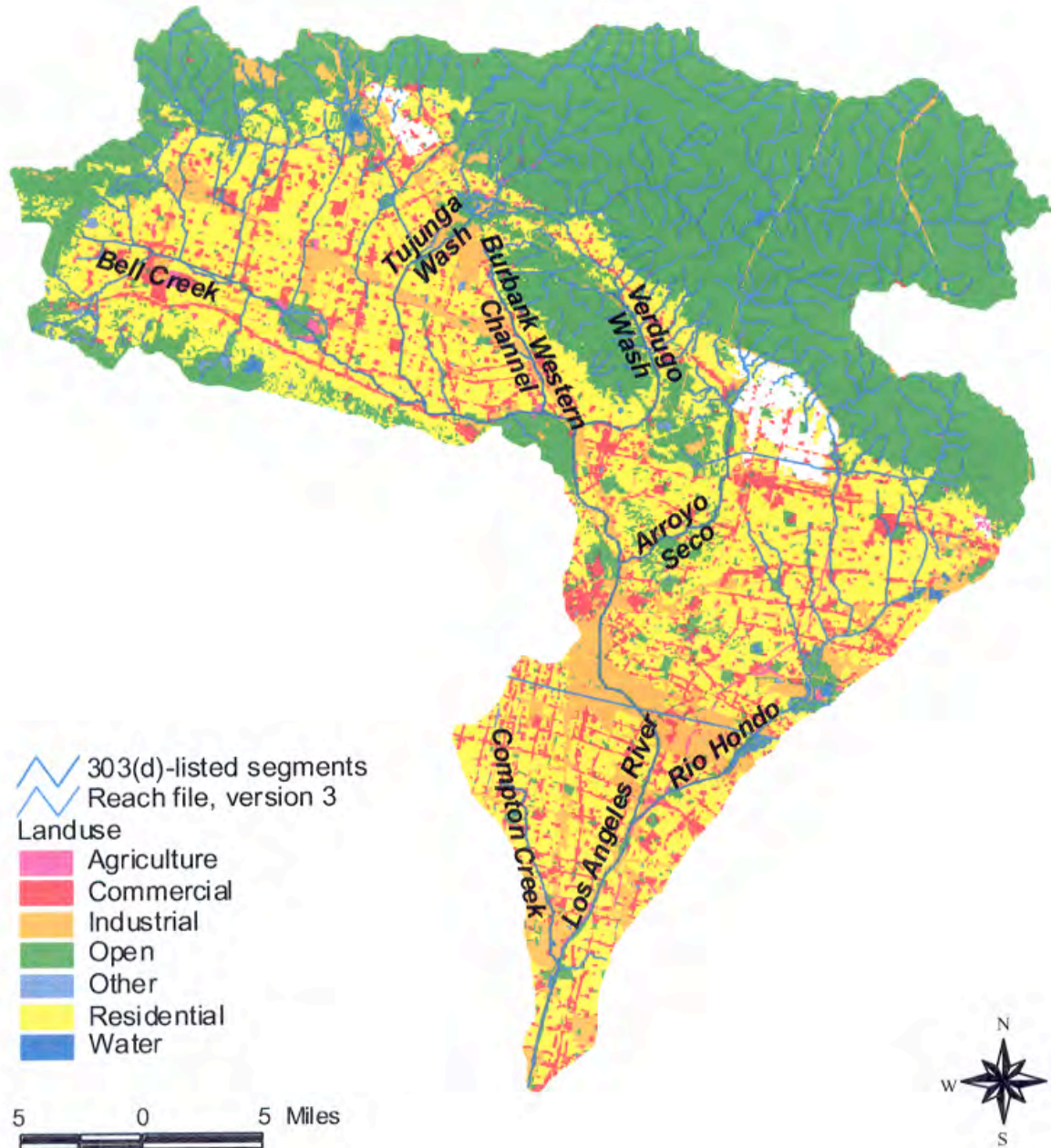


EXPLANATION
— DAILY MEAN STREAMFLOW

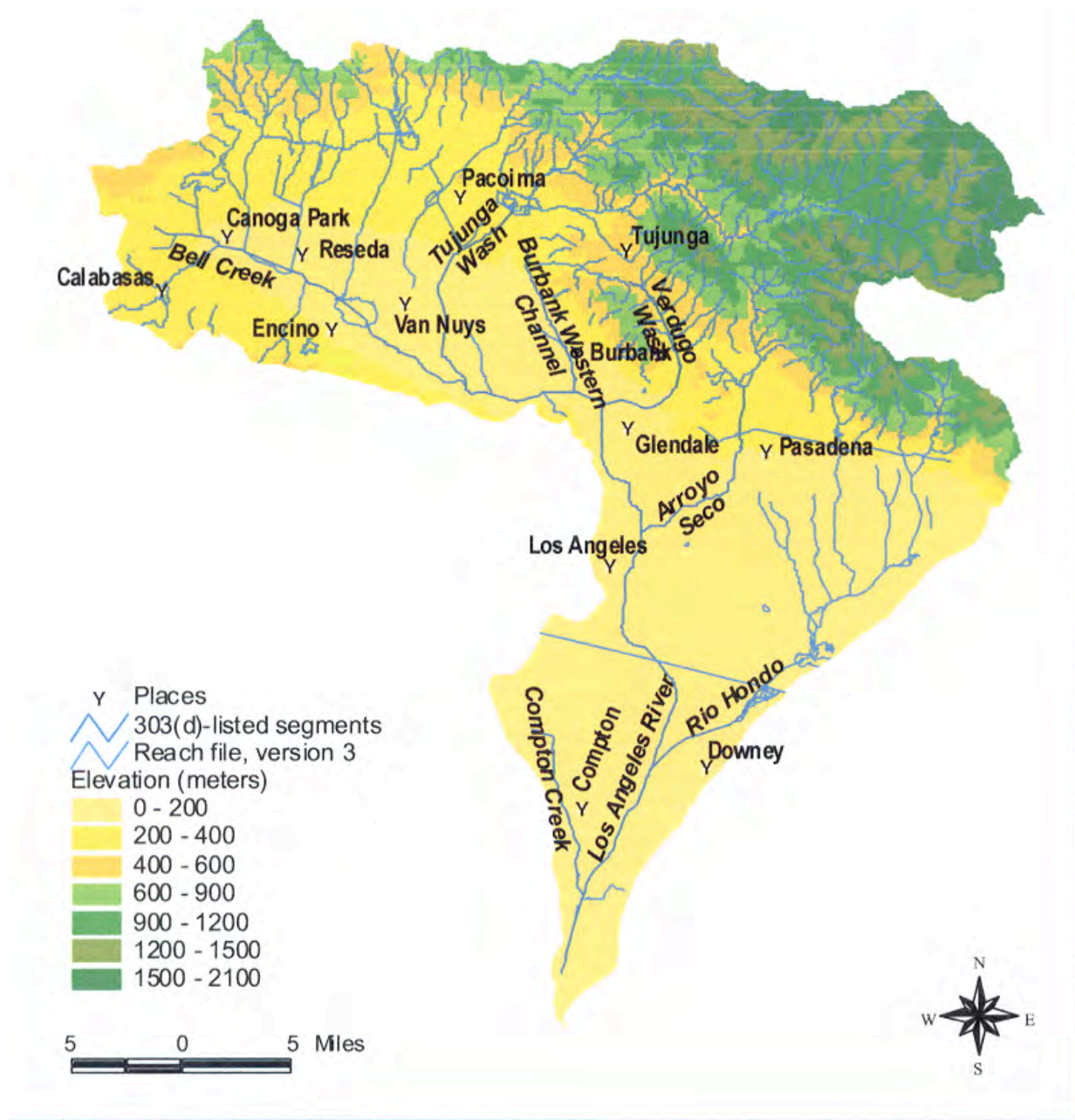
× MEASURED STREAMFLOW

Los Angeles County, California
Hydrologic Unit Code 18070105
Latitude 34°09'42", Longitude 118°27'57" NAD27
Drainage area 158 square miles
Gage datum 663.00 feet above sea level NGVD29

Los Angeles Regional Water
Quality Control Board
United States Environmental
Protection Agency – Region 9
Tetra Tech, Inc., July 2004



Los Angeles Regional Water
Quality Control Board
United States Environmental
Protection Agency – Region 9
Tetra Tech, Inc., July 2004



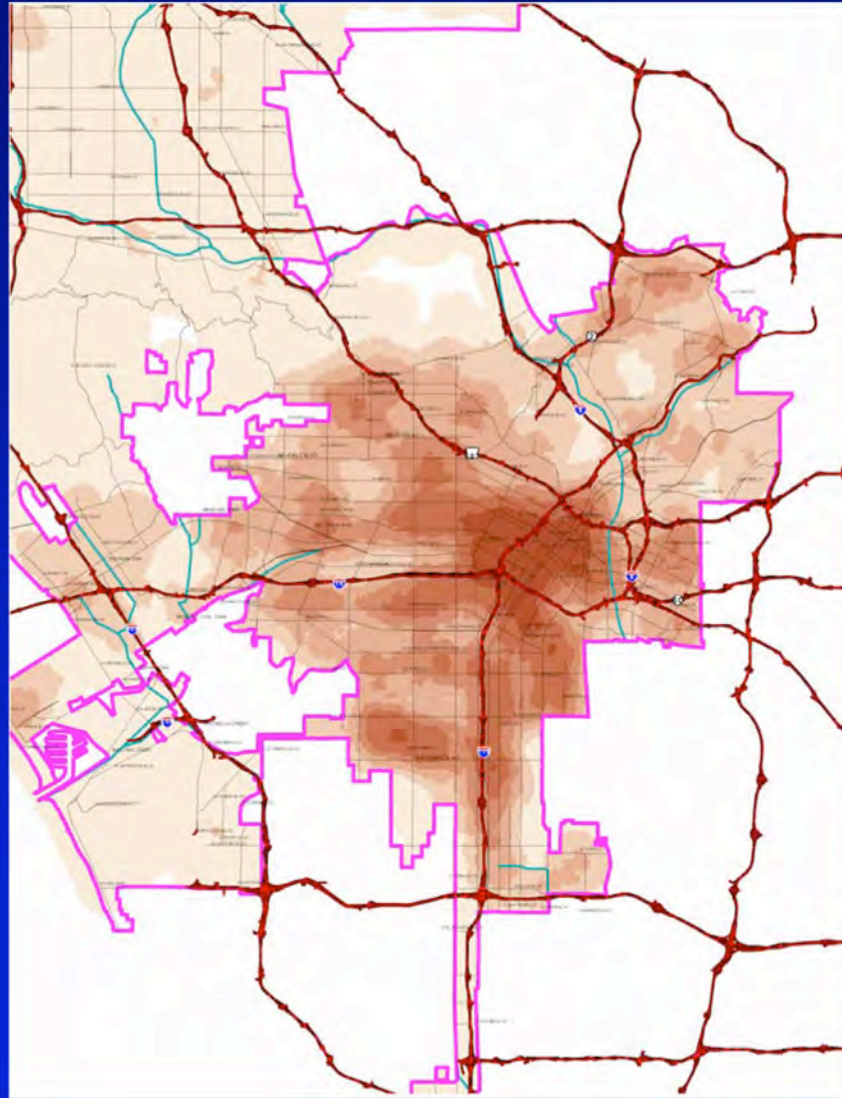
Los Angeles River Main Channel Status and Trends Monitoring Locations



Los Angeles River Main Channel Status and Trends Monitoring Locations



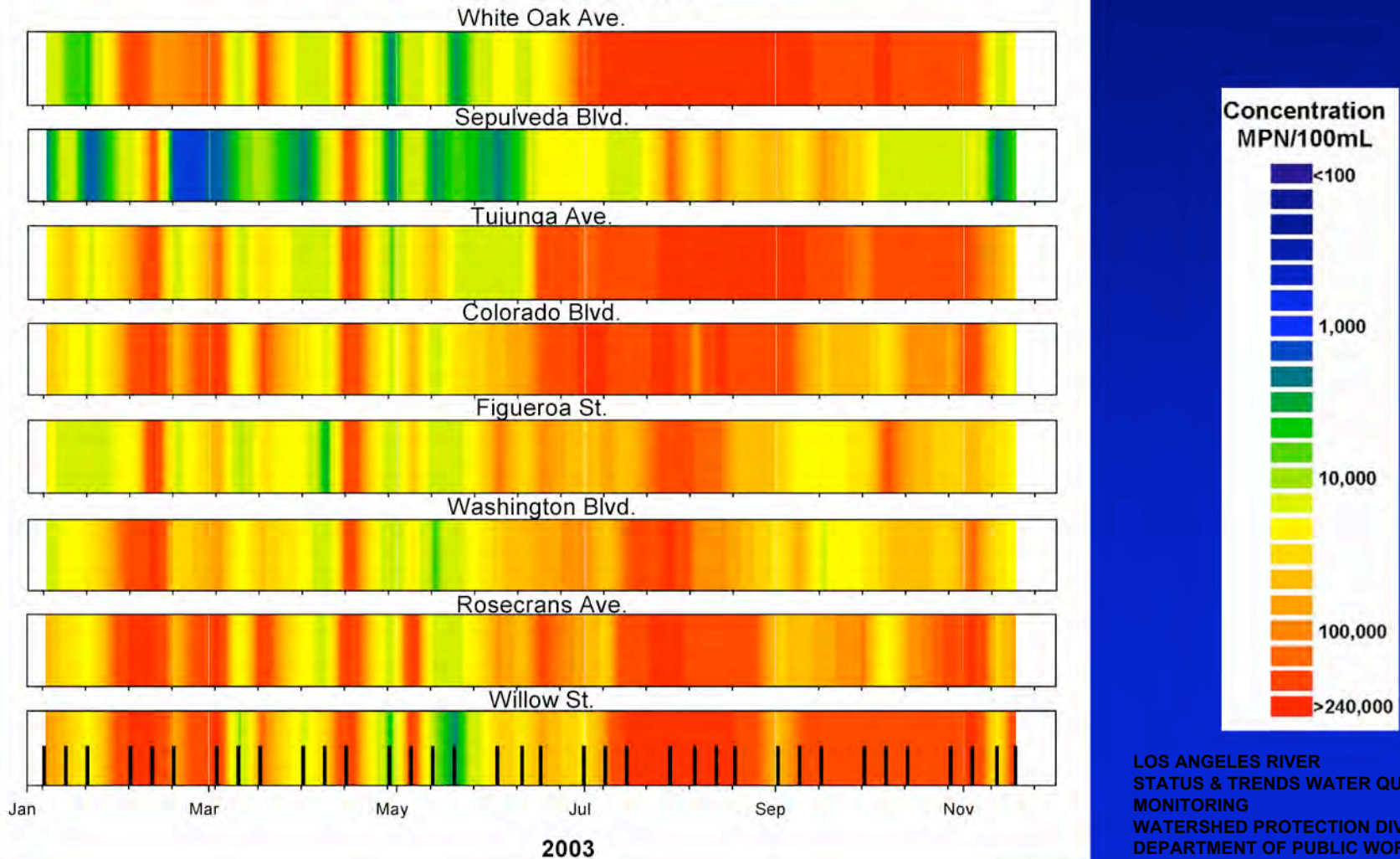
Trash Density in Los Angeles



LOS ANGELES RIVER
STATUS & TRENDS WATER
QUALITY MONITORING
WATERSHED PROTECTION
DIVISION
DEPARTMENT OF PUBLIC
WORKS
BUREAU OF SANITATION

Overview of Results – 2003

Los Angeles River Main Channel Total coliform

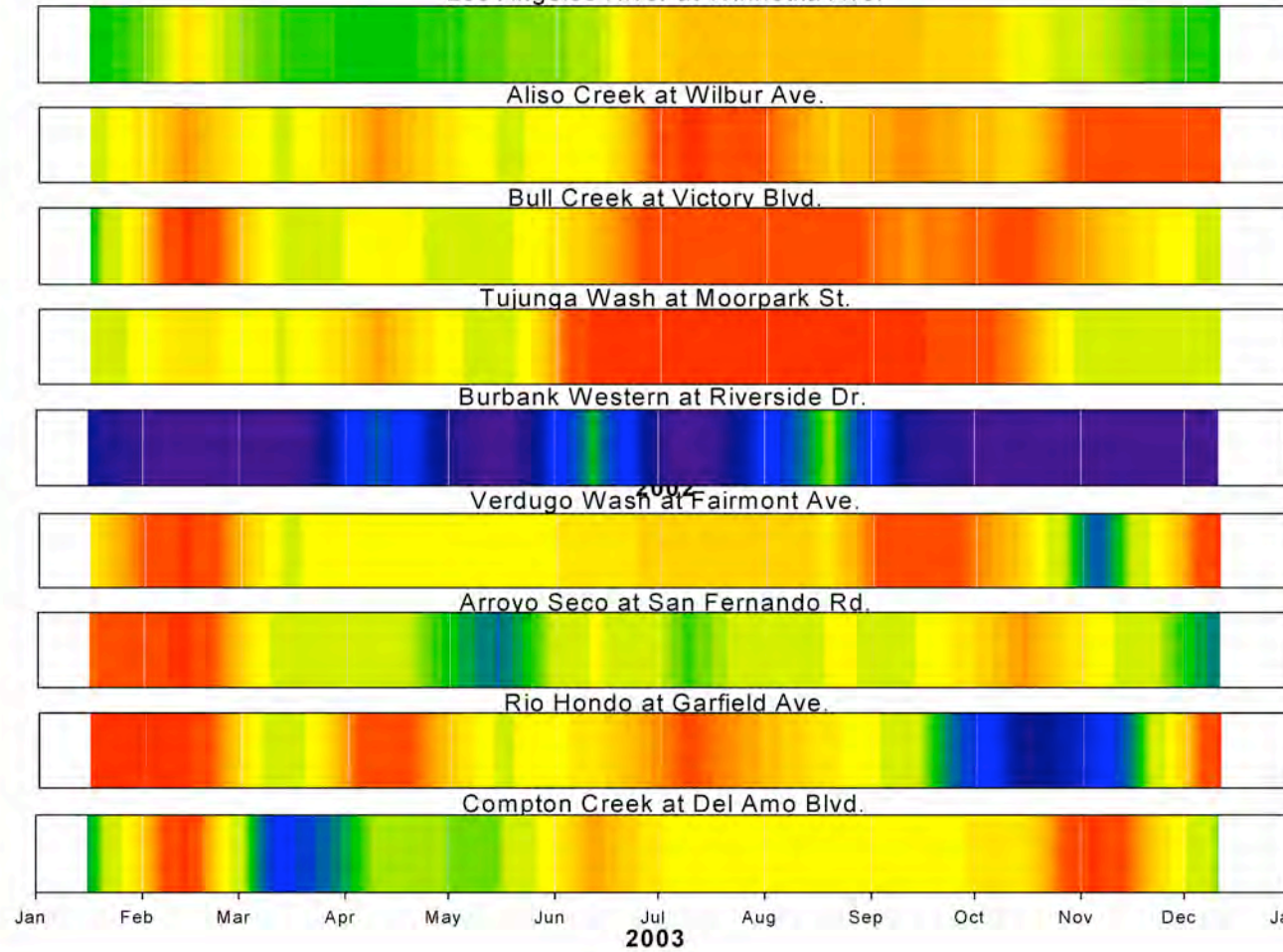


LOS ANGELES RIVER
STATUS & TRENDS WATER QUALITY
MONITORING
WATERSHED PROTECTION DIVISION
DEPARTMENT OF PUBLIC WORKS
BUREAU OF SANITATION

Overview of Results – 2003

Los Angeles River Tributary Channel Total Coliform

Los Angeles River at Winnetka Ave.



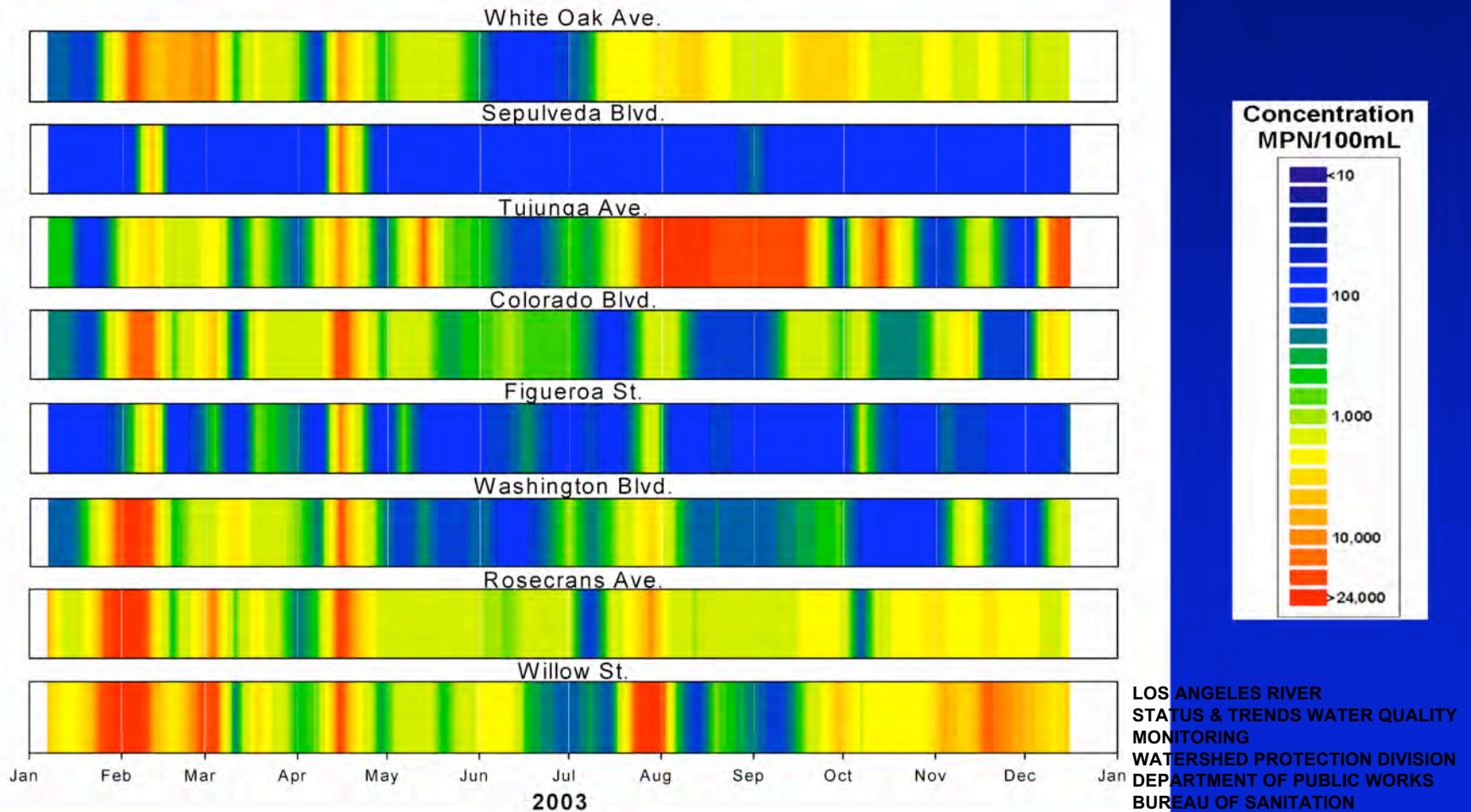
Concentration
MPN/100mL



LOS ANGELES RIVER
STATUS & TRENDS WATER QUALITY
MONITORING
WATERSHED PROTECTION DIVISION
DEPARTMENT OF PUBLIC WORKS
BUREAU OF SANITATION

Overview of Results – 2003

Los Angeles River Main Channel E. coli



Overview of Results – 2003

Los Angeles River Tributary Channel

E. Coli

Los Angeles River at Winnetka Ave.



Aliso Creek at Wilbur Ave.



Bull Creek at Victory Blvd.



Tujunga Wash at Moorpark St.



Burbank Western at Riverside Dr.



Verdugo Wash at Fairmont Ave.



Arroyo Seco at San Fernando Rd.



Rio Hondo at Garfield Ave.



Compton Creek at Del Amo Blvd.



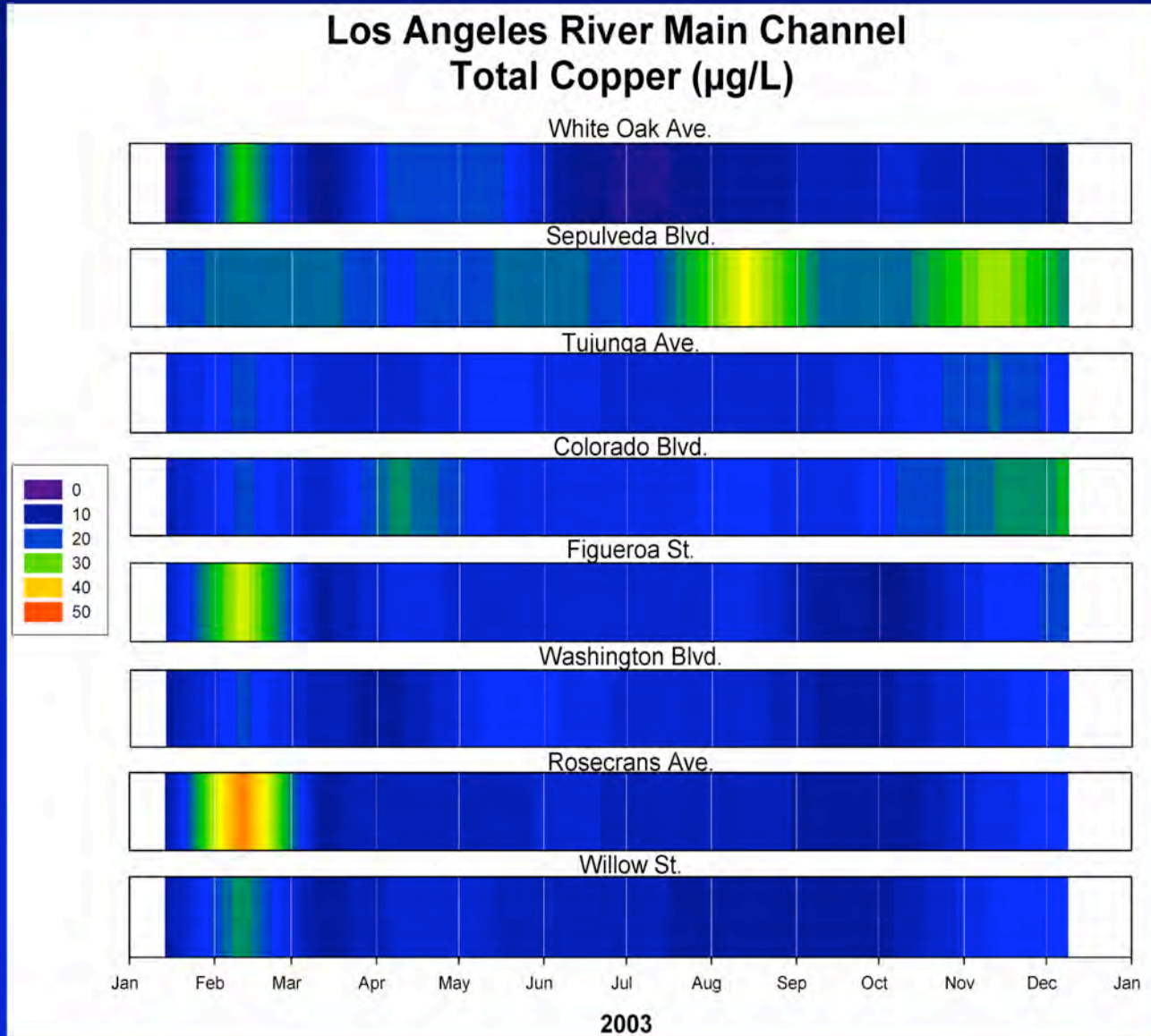
Jan Feb Mar Apr May Jun Jul Aug Sep Oct Nov Dec Jan
2003

Concentration
MPN/100mL



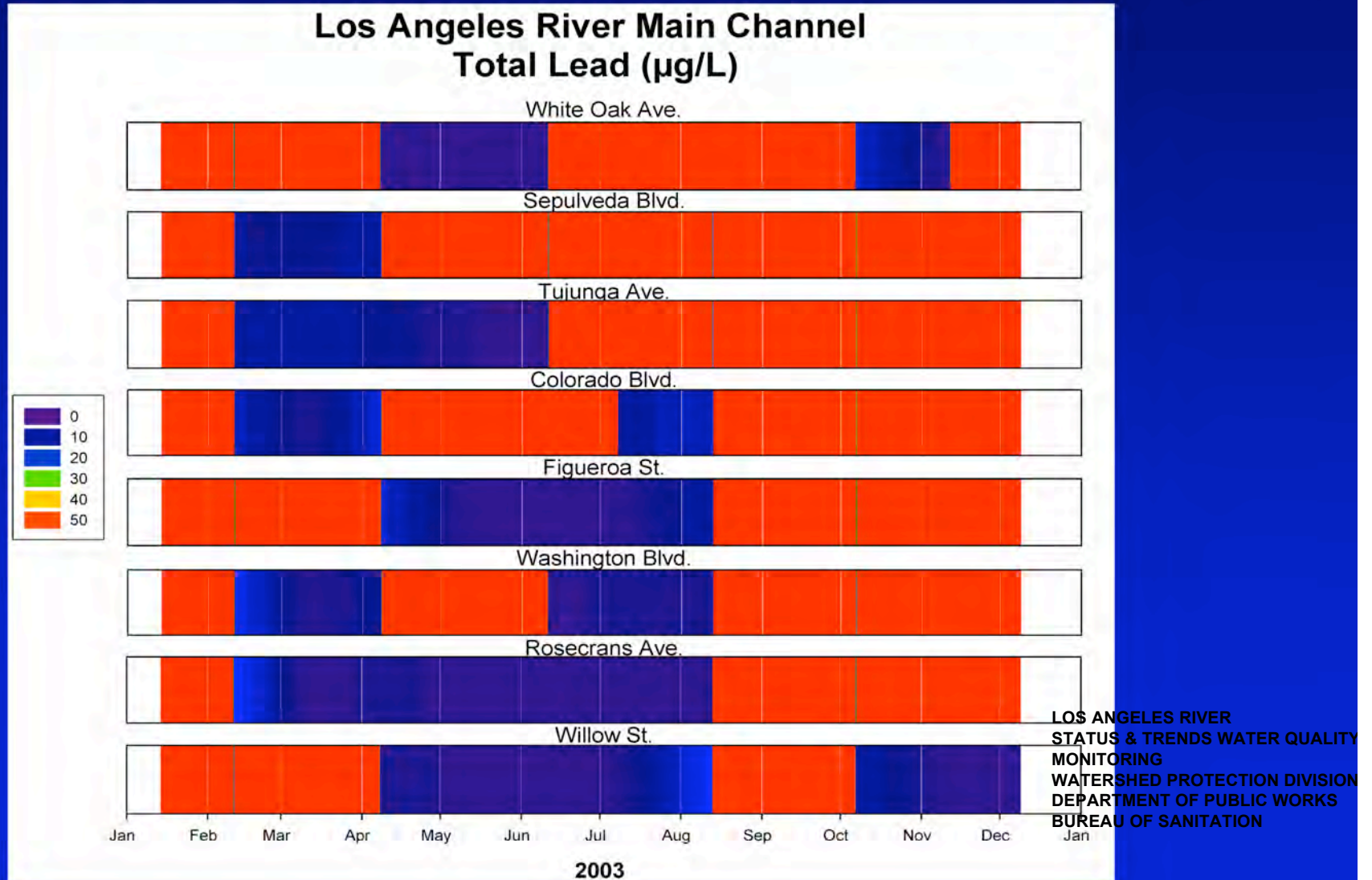
LOS ANGELES RIVER
STATUS & TRENDS WATER QUALITY
MONITORING
WATERSHED PROTECTION DIVISION
DEPARTMENT OF PUBLIC WORKS
BUREAU OF SANITATION

Overview of Results – 2003

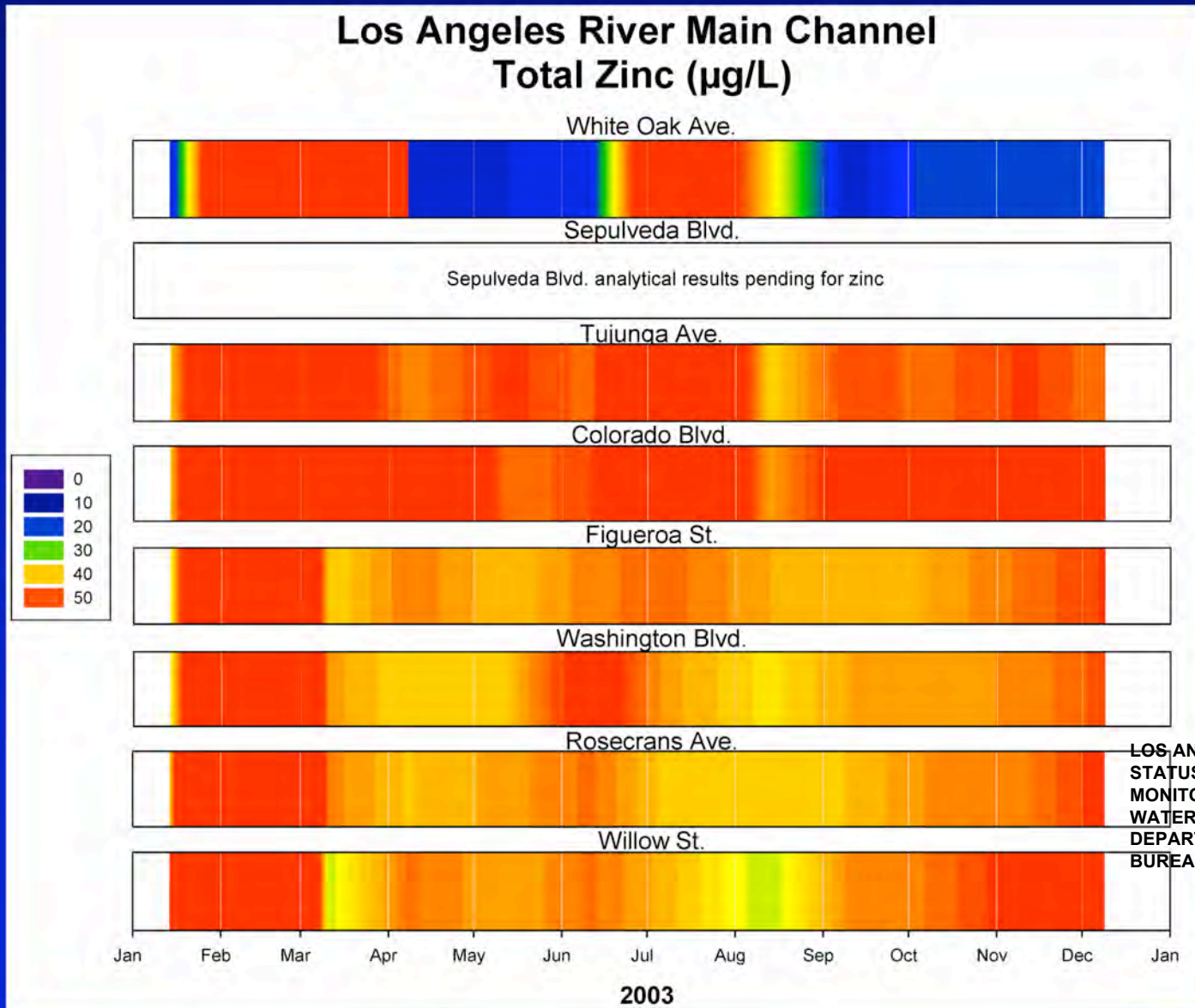


LOS ANGELES RIVER
STATUS & TRENDS WATER QUALITY
MONITORING
WATERSHED PROTECTION DIVISION
DEPARTMENT OF PUBLIC WORKS
BUREAU OF SANITATION

Overview of Results – 2003



Overview of Results – 2003



LOS ANGELES RIVER
STATUS & TRENDS WATER QUALITY
MONITORING
WATERSHED PROTECTION DIVISION
DEPARTMENT OF PUBLIC WORKS
BUREAU OF SANITATION